

SD LODGE MINING CLAIMS

EUREKA COUNTY, NEVADA

R 49 E R 50 E

(MDBM)

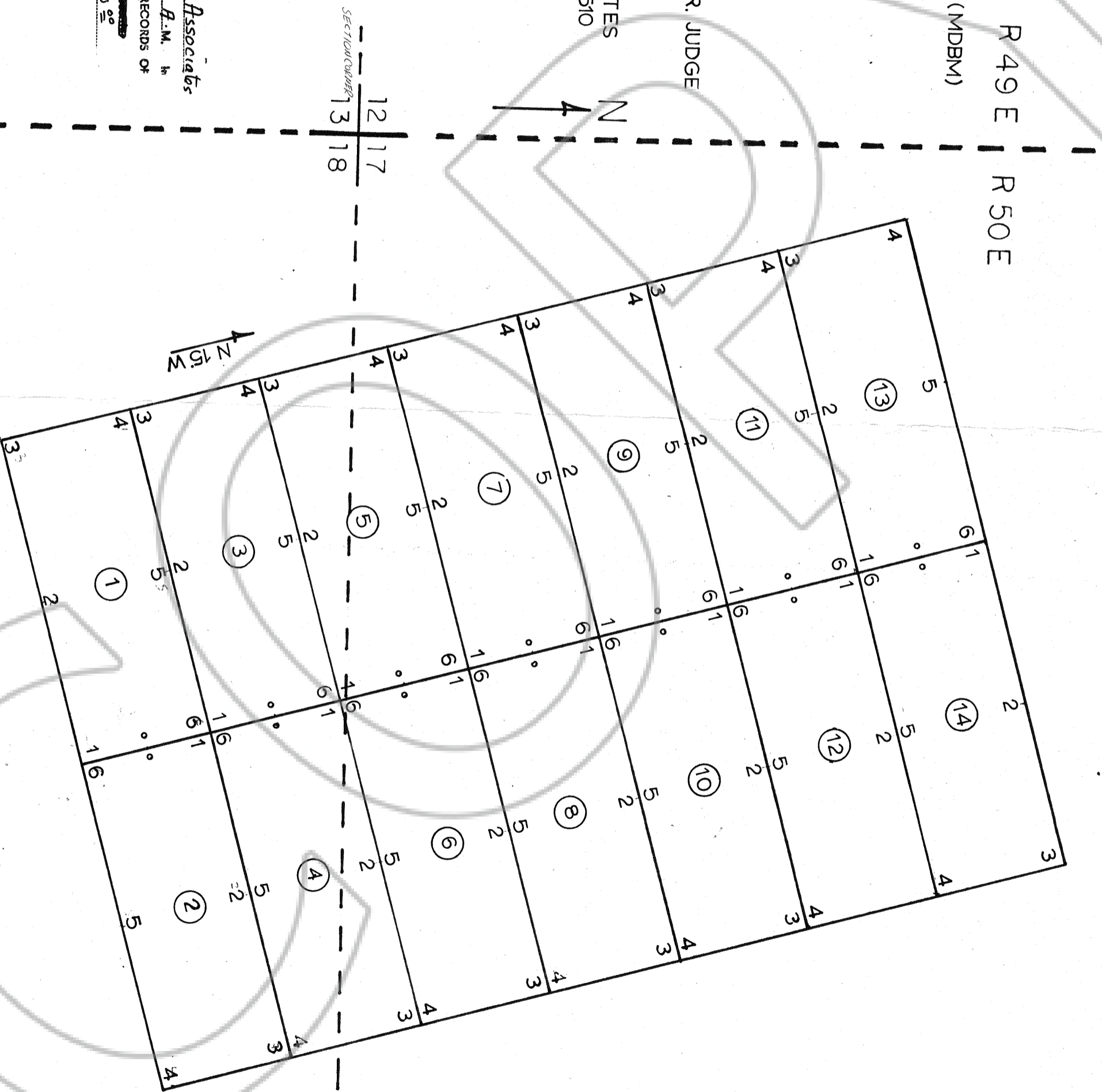
T 23 N

LOCATED BY: R.L. WALLACH, R. JUDGE
AND S.D. DANIELE

FOR:
GALLI EXPLORATION ASSOCIATES
P.O. BOX 12307 RENO, NV 89510

0 500
SCALE IN FEET

DRAFTED BY: RLW



86069

Filed AT THE REQUEST OF Galli Explorations Associates
on January 10, 1983 at 13 mins. past 11 A.M. in
RECORDS OF
EUREKA COUNTY, NEVADA
FILE No. 86069 Fee \$ 210.00

M.M. Abbott - Recorder