

R 51 E

R 51 1/2 E

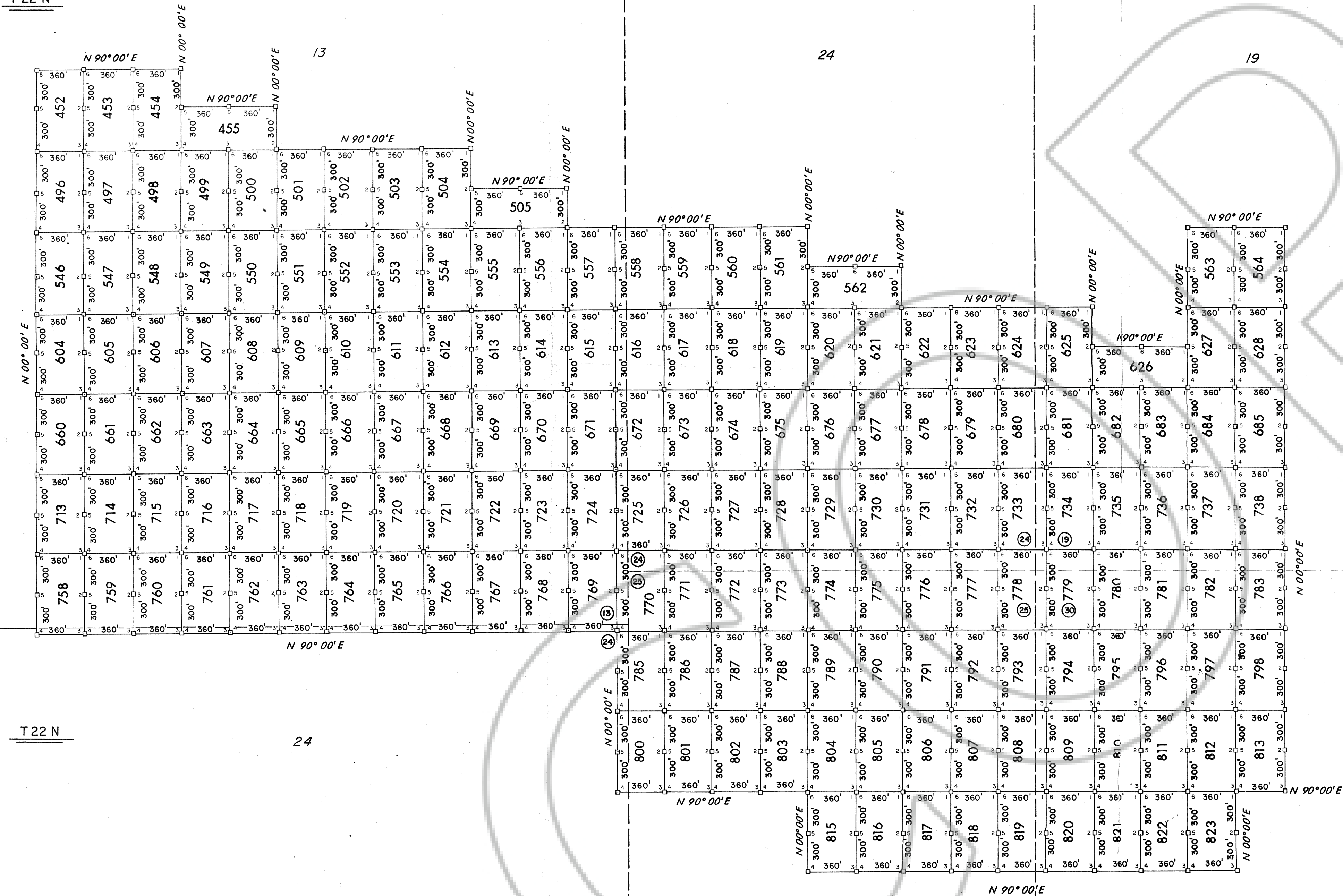
R 52 E

12

13

18

T 22 N



NOTE:

- (1) ALL CLAIMS NAMED MT MILLSITE
- (2) BEARINGS ARE TRUE BEARINGS.
- (3) TIES FROM THE SOUTHWEST CORNER OF SECTION 30, T 23 N, R 52 E, M.D.P.M., EUREKA COUNTY, NEVADA, TO THE NORTHEAST CORNER OF:

NO. 452 SOUTH 22 200' - EAST 4 080'

(4) LOCATION DATES:

FEBRUARY 01, 1983	NO. 563, 564, 627, 628, 684, 685, 736 NO. 737, 782, 797, 798, 812, 813, 823	FEBRUARY 05, 1983	NO. 454, 455 NO. 498 THROUGH NO. 501 NO. 504, 505 NO. 548 THROUGH NO. 551 NO. 554 THROUGH NO. 557 NO. 606 THROUGH NO. 609 NO. 612 THROUGH NO. 615 NO. 662 THROUGH NO. 665 NO. 668 THROUGH NO. 670 NO. 715 THROUGH NO. 717 NO. 721 THROUGH NO. 723 NO. 760 THROUGH NO. 762 NO. 766 THROUGH NO. 768
FEBRUARY 02, 1983	NO. 625, 626 NO. 681 THROUGH NO. 683 NO. 734, 735 NO. 779 THROUGH NO. 781 NO. 794 THROUGH NO. 796 NO. 809 THROUGH NO. 811 NO. 820 THROUGH NO. 822	FEBRUARY 06, 1983	NO. 502, 503, 552, 553, 610, 611 NO. 666, 667 NO. 718 THROUGH NO. 720 NO. 763 THROUGH NO. 765
FEBRUARY 03, 1983	NO. 560 THROUGH NO. 562 NO. 618 THROUGH NO. 624 NO. 675 THROUGH NO. 680 NO. 728 THROUGH NO. 733 NO. 773 THROUGH NO. 776 NO. 778 NO. 788 THROUGH NO. 793 NO. 803 THROUGH NO. 808 NO. 815 THROUGH NO. 819	FEBRUARY 08, 1983	NO. 738, 777, 783
FEBRUARY 04, 1983	NO. 452, 453, 496, 497, 546, 547, 558 NO. 559, 604, 605, 616, 617, 660, 661 NO. 671 THROUGH NO. 674 NO. 713, 714 NO. 724 THROUGH NO. 727 NO. 758, 759 NO. 769 THROUGH NO. 772 NO. 785 THROUGH NO. 787 NO. 800 THROUGH NO. 802		

MATCH SHEET 2

LEGEND

- ⊙ INDICATES BRASS CAP MONUMENT SECTION CORNER
- INDICATES 4"X4"X5' WOOD POST MONUMENT
- ⑦ ⑧ INDICATES SECTION CORNER BY PROTRACTION DIAGRAM

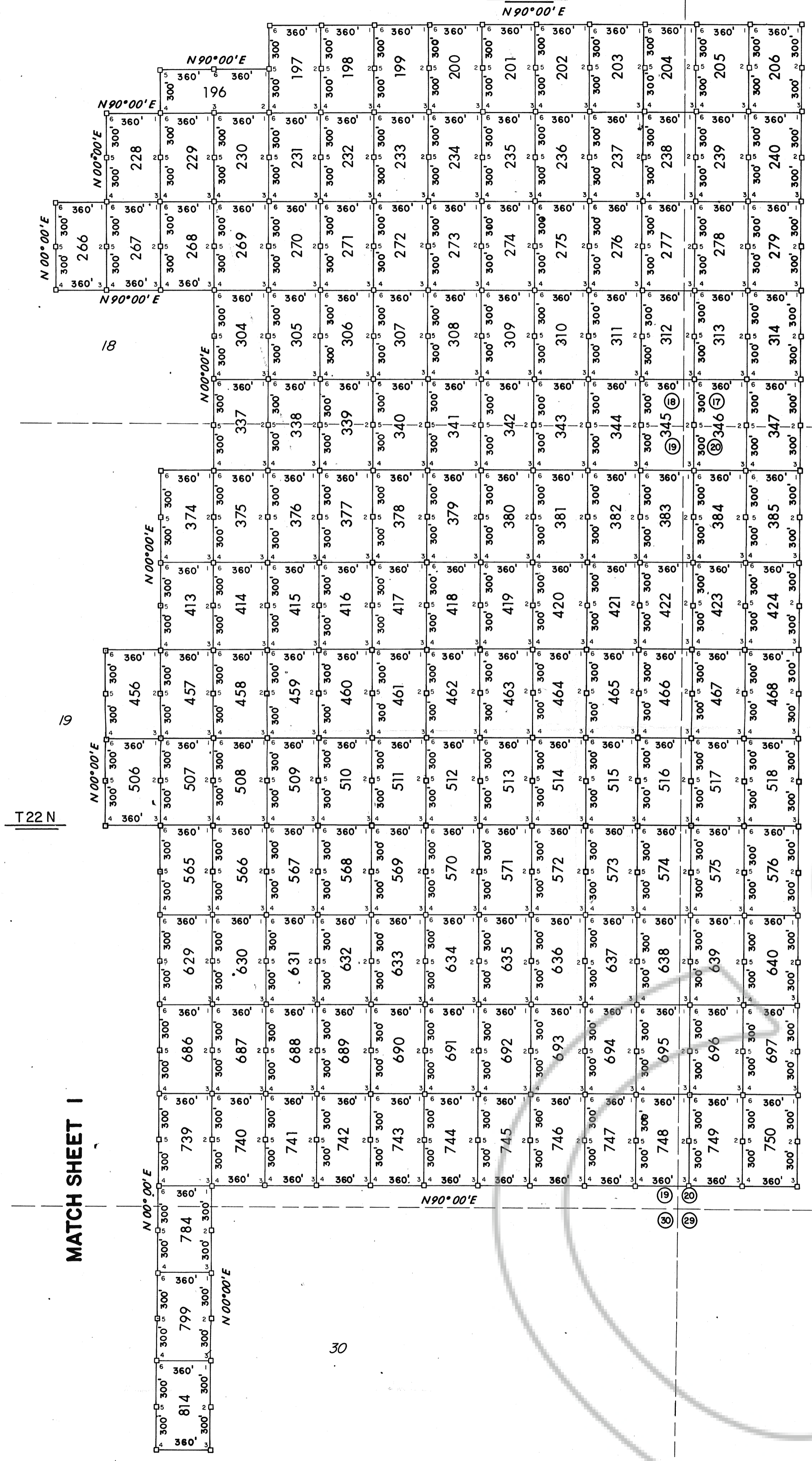
Filed
RECORDED AT THE REQUEST OF **EXXON CORP**
on February 24, 1983, at 09 mins. past 3 P. M. In
book _____ RECORDS OF
EUREKA COUNTY, NEVADA. M.N. REBALEATI, Recorder
File No. 87222 Fee \$ 12.345

EXXON MINERALS COMPANY P.O. BOX 4508 HOUSTON, TEXAS 77210			
LOCATION EUREKA COUNTY, NEVADA MT. HOPE MINING DISTRICT			
TITLE MAP OF MT MILLSITE CLAIMS			
SCALE 1" = 500'			
DRAWN BY BWM	DATE /83	CHECKED BY	DATE
APPR./REV. BY	DATE	APPR./REV. BY	DATE
APPR./REV. BY	DATE	ORIGINATOR ATJ	DATE /83
DRAWING NUMBER ONE	SCALE 1" = 500'	REVISION NUMBER	SHEET 1 OF 6

MATCH SHEET 3

SOUTHWEST CORNER, SECTION 30, T 23 N, R 52 E, M.D.P.M. SOUTHEAST CORNER, SECTION 30, T 23 N, R 52 E, M.D.P.M.

R 52 E
N 90°00' E



17

MATCH SHEET 4

20

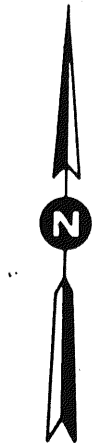
MATCH SHEET 5

NOTE:

- (1) ALL CLAIMS NAMED MT MILLSITE
- (2) BEARINGS ARE TRUE BEARINGS
- (3) TIES FROM THE SOUTHWEST CORNER OF SECTION 30, T 23 N, R 52 E, M.D.P.M., EUREKA COUNTY, NEVADA, TO THE NORTHEAST CORNER OF:
 - NO. 197 SOUTH 18 000' - EAST 6 000'
- (4) LOCATION DATES:
 - JANUARY 28, 1983 NO. 198, 231, 232, 270, 271, 305, 306
 NO. 338, 339, 376, 377, 415, 416, 459
 NO. 460, 509, 510, 567, 568, 631, 688
 NO. 689, 741, 742
 - JANUARY 29, 1983 NO. 196, 197, 199, 200, 233, 234, 272
 NO. 273, 307, 308, 340, 341, 378, 379
 NO. 417, 418, 461, 462, 511, 512, 569, 570
 NO. 633, 634, 690, 691, 743, 744
 - JANUARY 30, 1983 NO. 201, 202, 235, 236, 274, 275, 309
 NO. 310, 342, 343, 380, 381, 419, 420
 NO. 463, 464, 513, 514, 571, 572, 635
 NO. 636, 692, 693, 745, 746
 - JANUARY 31, 1983 NO. 203 THROUGH NO. 206
 NO. 229, 230
 NO. 237 THROUGH NO. 240
 NO. 276, 277, 304, 311, 312, 337, 344
 NO. 345, 374, 375, 382, 383, 413, 414
 NO. 421, 422, 457, 458, 465, 466, 507
 NO. 508, 515, 516, 565, 566, 573, 574
 NO. 629, 630, 637, 638, 686, 687, 694
 NO. 695, 739, 740, 747, 748, 784, 814
 - FEBRUARY 01, 1983 NO. 278, 279, 313, 314, 346, 347, 384
 NO. 385, 423, 424, 456, 467, 468, 506
 NO. 517, 518, 575, 576, 639, 640, 696, 697
 NO. 749, 750, 799
 - FEBRUARY 08, 1983 NO. 228, 266, 267, 632

LEGEND

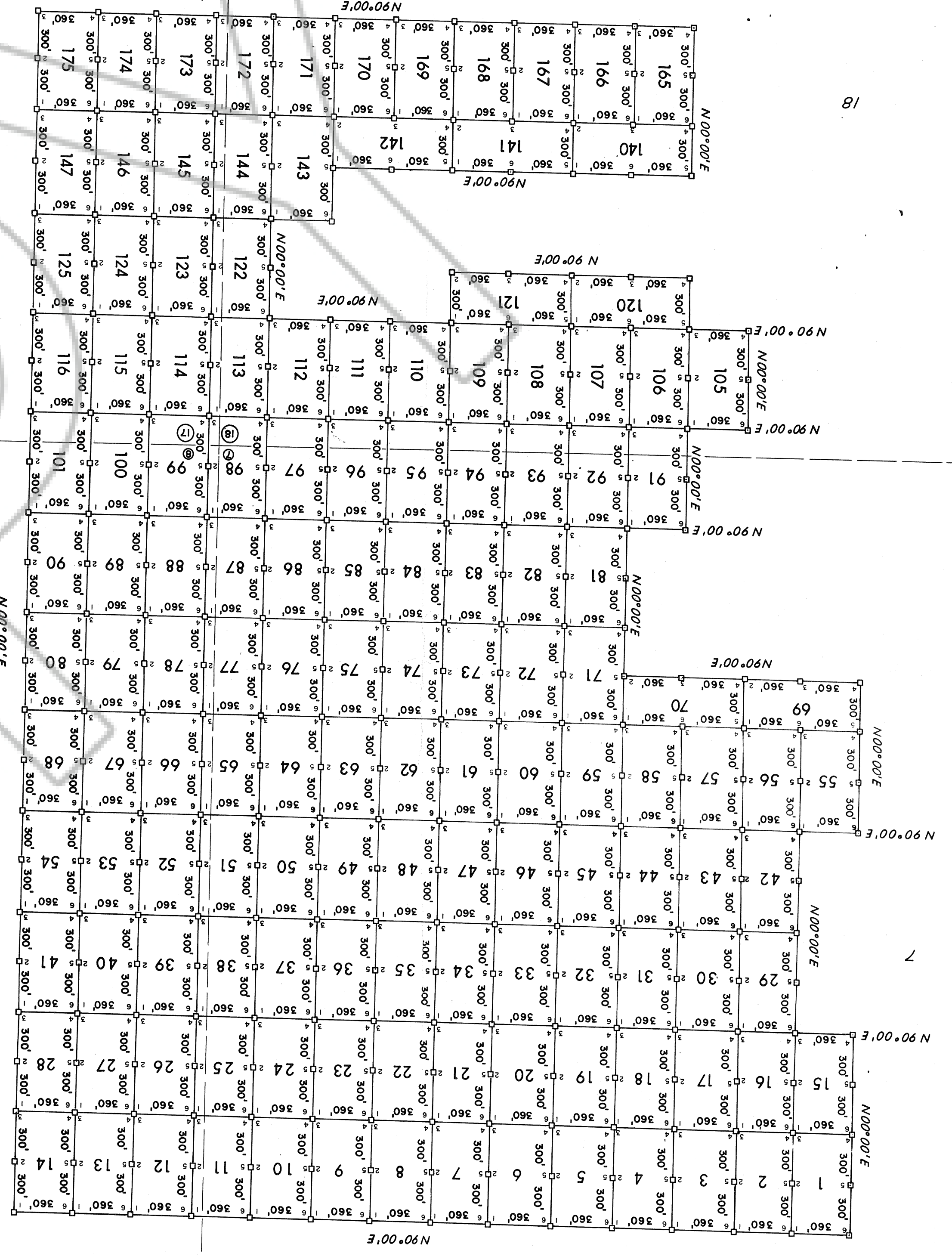
- ⊙ INDICATES BRASS CAP MONUMENT SECTION CORNER
- INDICATES 4"X4"X5' WOOD POST MONUMENT
- ① ② INDICATES SECTION CORNER BY PROTRACTION DIAGRAM



Filed
 RECORDED AT THE REQUEST OF **EXXON CORP**
 on February 24, 1983 at 09 mins past 3 P.M. in
 book _____ of **OFFICIAL RECORDS**, page _____
 EUREKA COUNTY, NEVADA. M.N. REBALEATI, Recorder
 File No. 87222 Fee \$ 12.245

EXXON MINERALS COMPANY P.O. BOX 4508 HOUSTON, TEXAS 77210			
LOCATION EUREKA COUNTY, NEVADA MT. HOPE MINING DISTRICT			
TITLE MAP OF MT MILLSITE CLAIMS			
SCALE 1"=500'			
DRAWN BY	BWM	DATE	/83
APPR./REV. BY		DATE	
APPR./REV. BY		DATE	
DRAWING NUMBER	TWO	ORIGINATOR	ATJ
SCALE	1"=500'	REVISION NUMBER	
			SHEET 2 OF 6

SOUTHWEST CORNER, SECTION 30, T23 N, R52E, M.D.P.M.
 SOUTHEAST CORNER, SECTION 30, T23 N, R52E, M.D.P.M.



NOTE:
 (1) ALL CLAIMS NAMED MT MILL SITE
 (2) BEARINGS ARE TRUE BEARINGS
 (3) TIES FROM THE SOUTHWEST CORNER OF SECTION 30, T23 N,
 R52E, M.D.P.M., EUREKA COUNTY, NEVADA, TO THE NORTHEAST
 CORNER OF:
 NO.1 SOUTH 10,800' - EAST 4,920'

JANUARY 28, 1983 NO.04 THROUGH NO.20
 NO.18 THROUGH NO.33
 NO.44 THROUGH NO.46
 NO.58 THROUGH NO.60
 NO.70, 72, 81, 82
 NO.91 THROUGH NO.93
 NO.106 THROUGH NO.108
 NO.120, 140, 166
 JANUARY 29, 1983 NO.07 THROUGH NO.09
 NO.21 THROUGH NO.23
 NO.34 THROUGH NO.36
 NO.47 THROUGH NO.49
 NO.61 THROUGH NO.63
 NO.73 THROUGH NO.75
 NO.83 THROUGH NO.86
 NO.94 THROUGH NO.97
 NO.109 THROUGH NO.112
 NO.141, 165, 167, 168
 JANUARY 30, 1983 NO.01 THROUGH NO.03
 NO.10, 11, 16, 17, 24, 25, 29, 30
 NO.37, 38, 42, 43, 50, 51, 56, 57
 NO.64, 65, 69, 76, 77, 87, 98, 113
 NO.122, 169, 170
 JANUARY 31, 1983 NO.12, 13, 26, 27, 39, 40, 52, 66
 NO.67, 78, 79, 88, 89, 99, 100, 114, 115
 NO.123 THROUGH NO.125
 NO.143 THROUGH NO.147
 NO.171 THROUGH NO.175
 FEBRUARY 01, 1983 NO.14, 15, 28, 41, 54, 55, 68, 80, 90
 NO.101, 116, 53
 FEBRUARY 08, 1983 NO.71, 121, 142

DRAWING NUMBER THREE		SCALE I"=500'
REVISION NUMBER	DATE	APPR./REV. BY
3	8/83	ATJ
ORIGINATOR	DATE	APPR./REV. BY
BWM	8/83	BWM
CHECKED BY	DATE	DATE
MAP OF MT MILL SITE CLAIMS		
TITLE		
EUREKA COUNTY, NEVADA		
MT HOPE MINING DISTRICT		
LOCATION		
EXXON MINERALS COMPANY		
P.O. BOX 4508		
HOUSTON, TEXAS 77210		

LEGEND
 (C) INDICATES BRASS CAP MONUMENT SECTION CORNER
 (D) INDICATES SECTION CORNER BY PROTRACTION DIAGRAM
 (E) INDICATES 4"x4"x5' WOOD POST MONUMENT

EXXON CORP
 3 E. M. in
 on February 24, 1983 at 09 mins past 3 P.M.
 EUREKA COUNTY, NEVADA
 M.N. REBAL/TLT. Recorder
 Fee \$ 12,345.00

RECORDED AT THE REQUEST OF
 EXXON CORP
 on February 24, 1983 at 09 mins past 3 P.M.
 EUREKA COUNTY, NEVADA
 M.N. REBAL/TLT. Recorder
 Fee \$ 12,345.00

FILE NO. 87222
 EUREKA COUNTY, NEVADA
 RECORDED AT THE REQUEST OF
 EXXON CORP
 on February 24, 1983 at 09 mins past 3 P.M.
 EUREKA COUNTY, NEVADA
 M.N. REBAL/TLT. Recorder
 Fee \$ 12,345.00

FILE NO. 87222
 EUREKA COUNTY, NEVADA
 RECORDED AT THE REQUEST OF
 EXXON CORP
 on February 24, 1983 at 09 mins past 3 P.M.
 EUREKA COUNTY, NEVADA
 M.N. REBAL/TLT. Recorder
 Fee \$ 12,345.00

FILE NO. 87222
 EUREKA COUNTY, NEVADA
 RECORDED AT THE REQUEST OF
 EXXON CORP
 on February 24, 1983 at 09 mins past 3 P.M.
 EUREKA COUNTY, NEVADA
 M.N. REBAL/TLT. Recorder
 Fee \$ 12,345.00

FILE NO. 87222
 EUREKA COUNTY, NEVADA
 RECORDED AT THE REQUEST OF
 EXXON CORP
 on February 24, 1983 at 09 mins past 3 P.M.
 EUREKA COUNTY, NEVADA
 M.N. REBAL/TLT. Recorder
 Fee \$ 12,345.00

FILE NO. 87222
 EUREKA COUNTY, NEVADA
 RECORDED AT THE REQUEST OF
 EXXON CORP
 on February 24, 1983 at 09 mins past 3 P.M.
 EUREKA COUNTY, NEVADA
 M.N. REBAL/TLT. Recorder
 Fee \$ 12,345.00

FILE NO. 87222
 EUREKA COUNTY, NEVADA
 RECORDED AT THE REQUEST OF
 EXXON CORP
 on February 24, 1983 at 09 mins past 3 P.M.
 EUREKA COUNTY, NEVADA
 M.N. REBAL/TLT. Recorder
 Fee \$ 12,345.00

SOUTHWEST CORNER, SECTION 30
T23N, R52E, M.D.P.M.

SOUTHEAST CORNER, SECTION 29
T23N, R52E, M.D.P.M.

R 52 E

8

9

NOTE:

- (1) ALL CLAIMS NAMED MT MILL SITE
- (2) BEARINGS ARE TRUE BEARINGS.

(3) TIES FROM THE SOUTHWEST CORNER SECTION 30, T23N, R52E, M.D.P.M., EUREKA COUNTY, NEVADA, TO THE NORTHEAST CORNER OF:

NO. 102 SOUTH 1500' EAST 9960'

(4) LOCATION DATES:

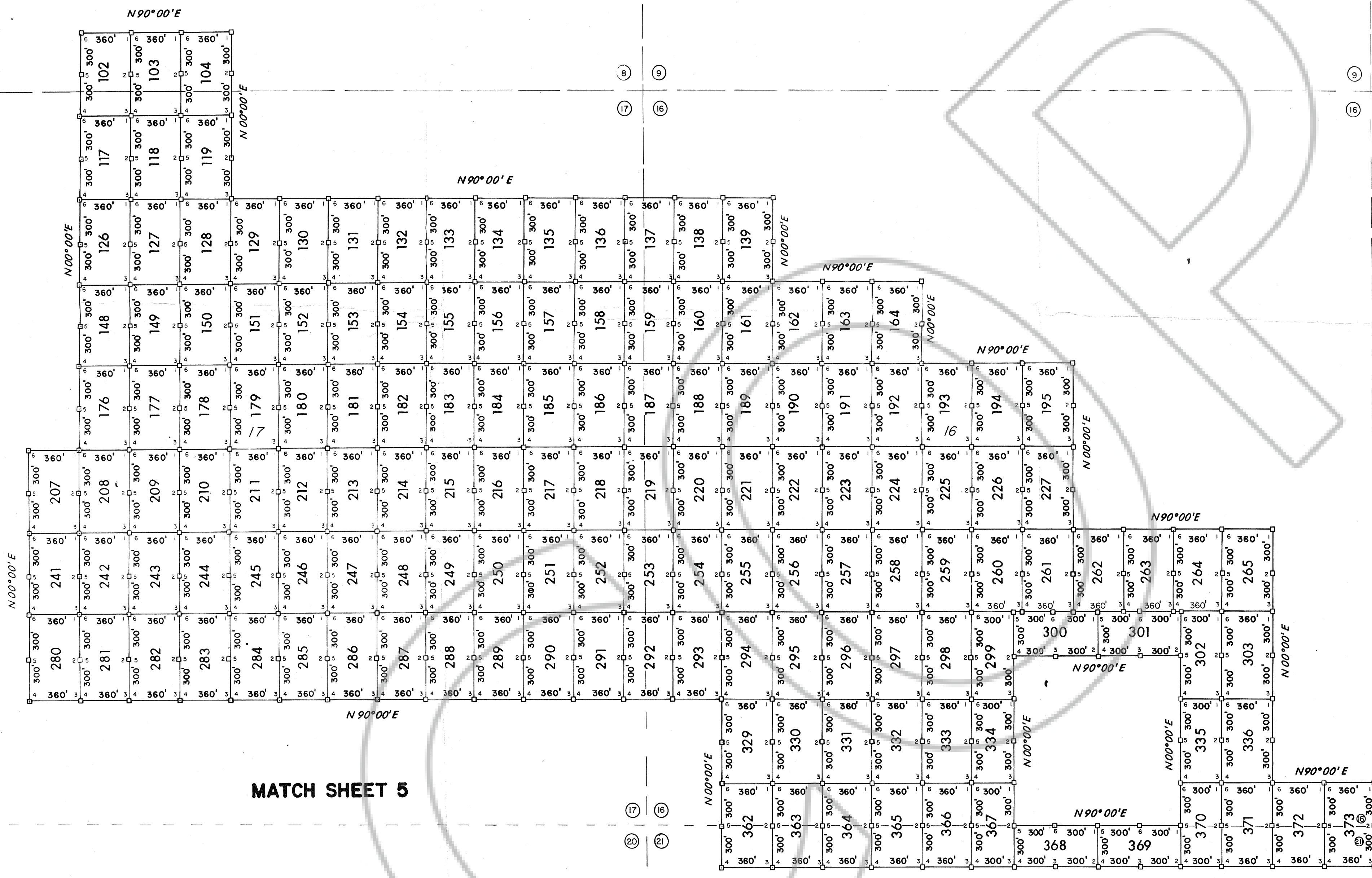
JANUARY 31, 1983	NO. 207, 241
FEBRUARY 1, 1983	NO. 102, 103 NO. 117, 118 NO. 126, 127 NO. 148, 149 NO. 176, 177 NO. 208, 209 NO. 242, 243 NO. 280
FEBRUARY 2, 1983	NO. 103, 119 NO. 128 THROUGH NO. 133 NO. 150 THROUGH NO. 155 NO. 178 THROUGH NO. 183 NO. 210 THROUGH NO. 215 NO. 244 THROUGH NO. 249 NO. 281, 282
FEBRUARY 3, 1983	NO. 283, THROUGH NO. 289
FEBRUARY 5, 1983	NO. 134 THROUGH NO. 136 NO. 157, 158, 290, 291 NO. 184 THROUGH NO. 186 NO. 216 THROUGH NO. 218 NO. 250 THROUGH NO. 252
FEBRUARY 6, 1983	NO. 137 THROUGH NO. 139 NO. 159 THROUGH NO. 164 NO. 187 THROUGH NO. 195 NO. 219 THROUGH NO. 227 NO. 253 THROUGH NO. 260 NO. 293, 294, 329, 362
FEBRUARY 7, 1983	NO. 261, THROUGH NO. 265 NO. 295, THROUGH NO. 298 NO. 302, 303, 335, 336 NO. 363 THROUGH NO. 366 NO. 370 THROUGH NO. 373
FEBRUARY 8, 1983	NO. 292, 334 NO. 299 THROUGH NO. 301 NO. 367 THROUGH NO. 369

MATCH SHEET 3

MATCH SHEET 2

MATCH SHEET 5

MATCH SHEET 6



LEGEND:

- ⊙ INDICATES BRASS MONUMENT SECTION CORNER
- INDICATES 4" X 4" X 5' WOOD POST MONUMENT
- ⊗ INDICATES SECTION CORNER BY PROTRACTION DIAGRAM



FILED AT THE REQUEST OF **EXXON CORP**
 on February 24, 1983 at 09 mins. past 3 P. M. in
 _____ OFICIAL RECORDS, page _____, RECORDS OF
 EUREKA COUNTY, NEVADA. M.N. REBALEATI, Recorder
 File No. 87222 Fee \$ 12.345

EXXON MINERALS COMPANY			
P.O. BOX 4508 HOUSTON, TEXAS 77210			
LOCATION		EUREKA COUNTY, NEVADA MT. HOPE MINING DISTRICT	
TITLE MAP OF MT MILLSITE CLAIMS			
SCALE 1" = 500'			
DRAWN BY	BWM, DMC	DATE	/83
APPR./REV. BY		DATE	
APPR./REV. BY	ATJ	DATE	/83
DRAWING NUMBER	FOUR	SCALE	1" = 500'
REVISION NUMBER		SHEET	4
		OF	6

SOUTHWEST CORNER OF SECTION 30,
T23N, R52E, M.D.P.M.

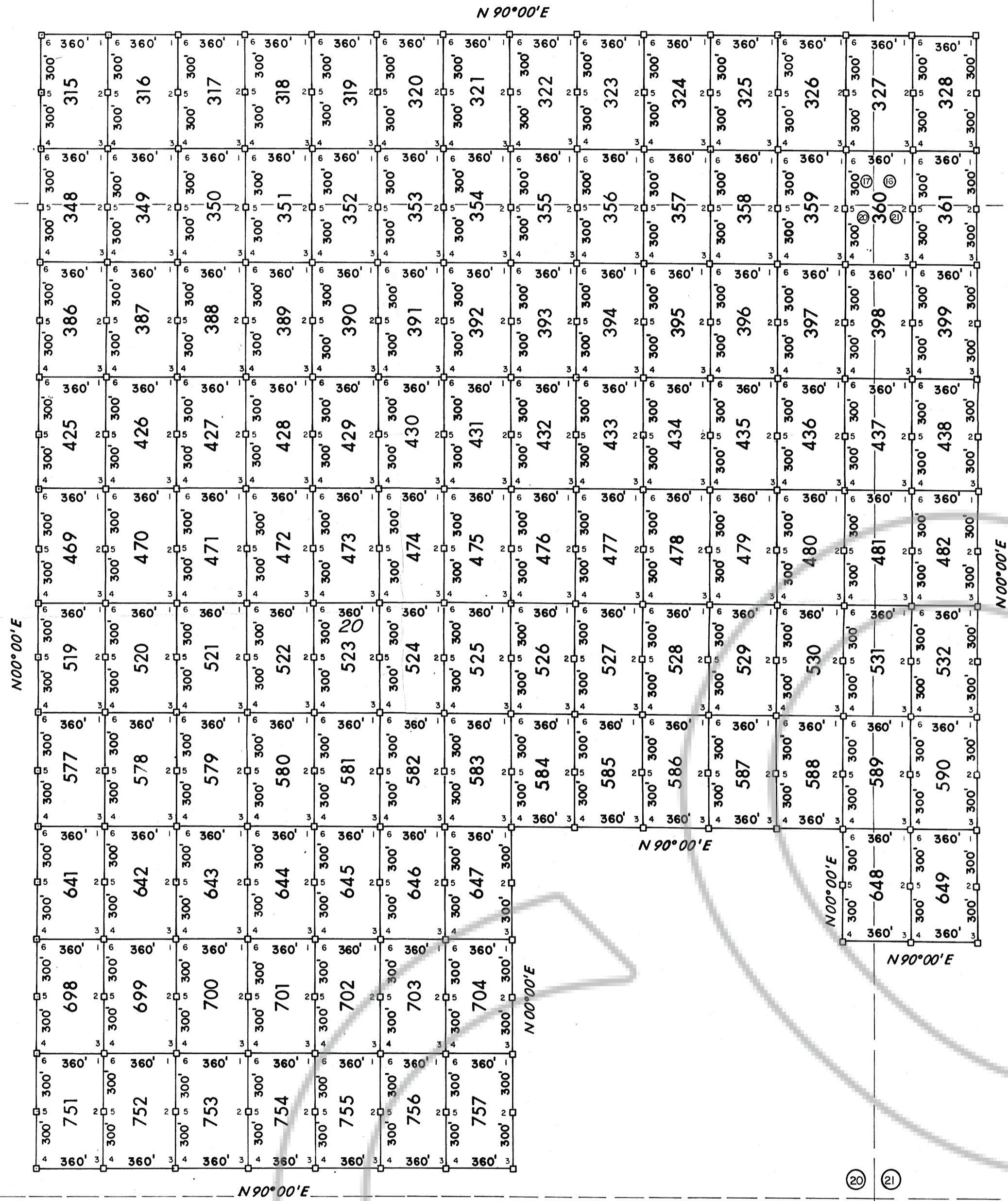
SOUTHEAST CORNER OF SECTION 29,
T23N, R52E, M.D.P.M.

R 52 E

MATCH SHEET 4

MATCH SHEET 2

MATCH SHEET 6



NOTE:

- (1) ALL CLAIMS NAMED MT MILL SITE
- (2) BEARINGS ARE TRUE BEARINGS.
- (3) TIES FROM THE SOUTHWEST CORNER SECTION 30, T23N, R52E, M.D. P.M., EUREKA COUNTY, NEVADA, TO THE NORTHEAST CORNER OF:

NO. 315 SOUTH 19800' EAST 9600'

(4) LOCATION DATES:

FEBRUARY 1, 1983	NO. 315, 348, 386, 425, 469, 515
FEBRUARY 2, 1983	NO. 316, 349, 350, 387, 388, 426, 427, 470, 471, 520, 577, 578, 641, 642, 698, 699, 751, 752
FEBRUARY 3, 1983	NO. 521 THROUGH NO. 523 NO. 579 THROUGH NO. 581 NO. 643 THROUGH NO. 645 NO. 700 THROUGH NO. 702 NO. 753 THROUGH NO. 755
FEBRUARY 4, 1983	NO. 318 THROUGH NO. 324 NO. 355 THROUGH NO. 357 NO. 393 THROUGH NO. 395 NO. 433, 434, 477, 478, 527, 528, 585, 586
FEBRUARY 5, 1983	NO. 325, 326, 358, 359, 396, 397, 435, 436, 479, 480, 529, 530, 587, 588
FEBRUARY 6, 1983	NO. 327, 328, 360, 361, 398, 399, 437, 438, 481, 482, 531, 532, 589, 590, 648, 649
FEBRUARY 7, 1983	NO. 351 THROUGH NO. 354 NO. 389 THROUGH NO. 392 NO. 428 THROUGH NO. 431 NO. 472 THROUGH NO. 475 NO. 524, 525, 582, 583, 646, 647, 703, 704, 756, 757
FEBRUARY 8, 1983	NO. 317, 432, 476, 526, 584

Filed
 RECEIVED AT THE REQUEST OF **EXXON CORP**
 on February 24, 1983, at 09 mins. past 02 P.M. In
 book _____ of Official Records page _____, RECORDS OF
 EUREKA COUNTY, NEVADA. M.N. REBALEATI, Recorder
 File No. 87222 Fee \$ 13.345

EXXON MINERALS COMPANY
P.O. BOX 4508
HOUSTON, TEXAS 77210

LOCATION
EUREKA COUNTY, NEVADA
MT. HOPE MINING DISTRICT

TITLE
MAP OF MT MILLSITE CLAIMS

SCALE 1" = 500'

DRAWN BY	DATE	CHECKED BY	DATE
BWM, DMC	/83		

APPR./REV. BY	DATE	APPR./REV. BY	DATE
		ATJ	/83

DRAWING NUMBER	SCALE	REVISION NUMBER	SHEET
FIVE	1" = 500'		5

OF 6

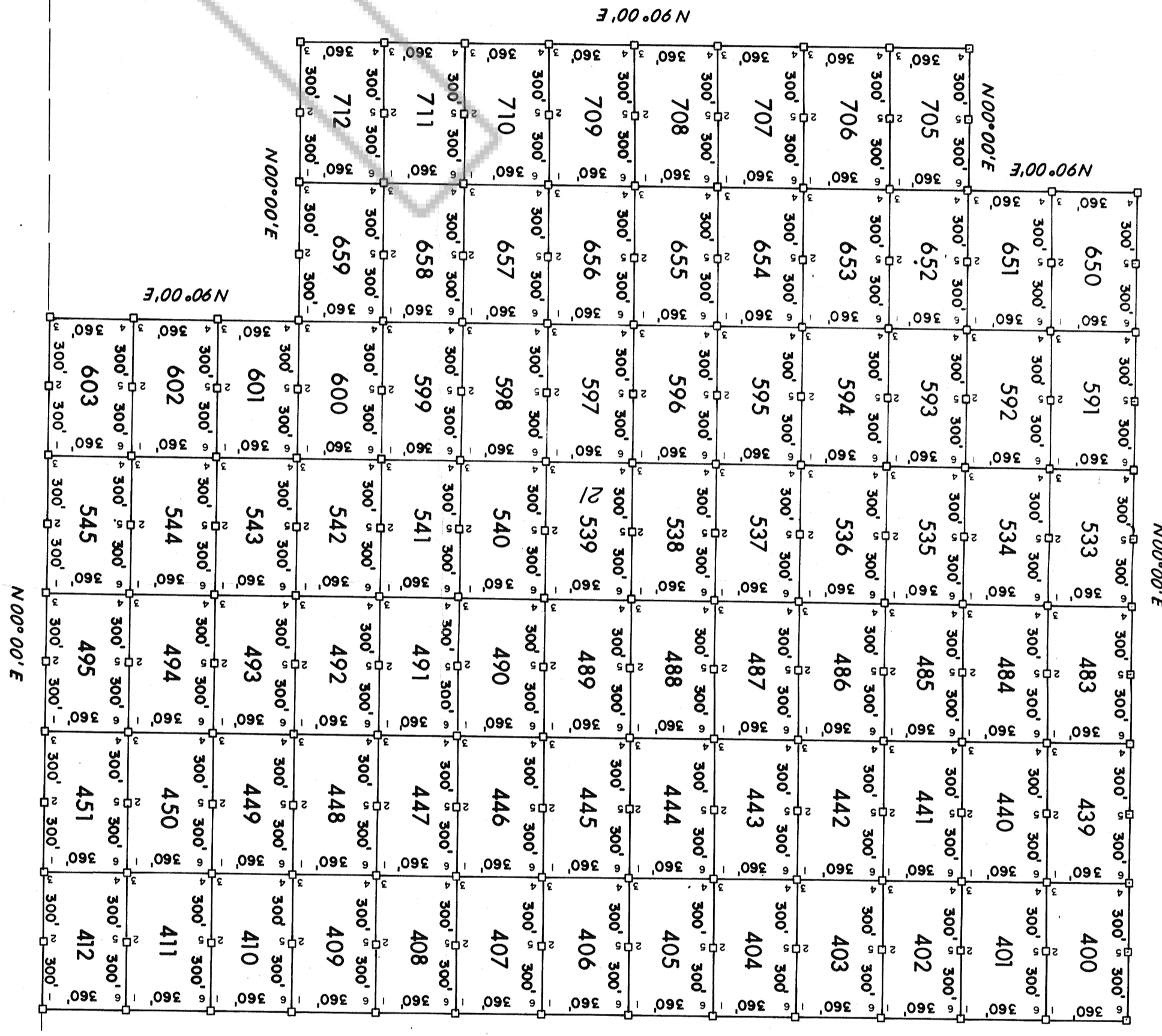
LEGEND:

- ⊙ INDICATES BRASS MONUMENT SECTION CORNER
- INDICATES 4" X 4" X 5" WOOD POST MONUMENT
- ⊙ ⊙ INDICATES SECTION CORNER BY PROTRACTION DIAGRAM



17 20 29

MATCH SHEET 5

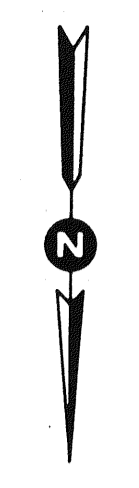
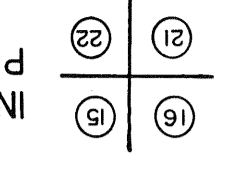


SOUTHWEST CORNER, SECTION 30, T23N, R52E, M.D.P.M.
 SOUTHEAST CORNER, SECTION 28, T23N, R52E, M.D.P.M.

NOTE:
 (1) ALL CLAIMS NAMED MT MILLSITE
 (2) BEARINGS ARE TRUE BEARINGS
 (3) TIES FROM THE SOUTHWEST CORNER SECTION 30, T23N,
 R52E, M.D.P.M., EUREKA COUNTY, NEVADA, TO THE NORTHEAST
 CORNER OF:
 NO. 400 SOUTH 2100' EAST 14,640'

FEBRUARY 6, 1983 NO. 400, 439, 483, 533, 591,
 NO. 650
 FEBRUARY 7, 1983 NO. 401, 440, 484, 494, 495,
 NO. 534, 651, 652, 705
 NO. 449 THROUGH NO. 451
 NO. 543 THROUGH NO. 545
 NO. 592 THROUGH NO. 594
 NO. 601 THROUGH NO. 603
 FEBRUARY 8, 1983 NO. 402 THROUGH NO. 409
 NO. 441 THROUGH NO. 448
 NO. 485 THROUGH NO. 493
 NO. 535 THROUGH NO. 542
 NO. 595 THROUGH NO. 600
 NO. 653 THROUGH NO. 659
 NO. 706 THROUGH NO. 712

INDICATES BRASS MONUMENT SECTION CORNER
 INDICATES 4" X 4" X 5" WOOD POST MONUMENT
 PROTRACTION DIAGRAM



EXXON MINERALS COMPANY
 HOUSTON, TEXAS 77210

LOCATION
 EUREKA COUNTY, NEVADA
 MT. HOPE MINING DISTRICT

TITLE
 MAP OF MT MILLSITE CLAIMS

SCALE 1" = 500'

DRAWN BY BWM,DMC /83 /83
 CHECKED BY
 DATE

APPR./REV. BY A.T.J.
 DATE /83 /83
 DATE

ORIGINATOR
 DATE

REVISION NUMBER
 SCALE 1" = 500'

SHEET 6 OF 6

Filed
 EXXON CORP
 on February 24, 1983 at 3 P.M. in
 RECORDS OF
 M.N. REBILITATION RECORDS
 EUREKA COUNTY, NEVADA.
 Fee \$ 14,845.
 87222