

MAP of BEO. GROUP of LODE CLAIMS

BEOHAVE, MINING DISTRICT
EUREKA, COUNTY NEVADA

SEG. 26 - T31N - R49E TRUE NORTH

1" = 500'

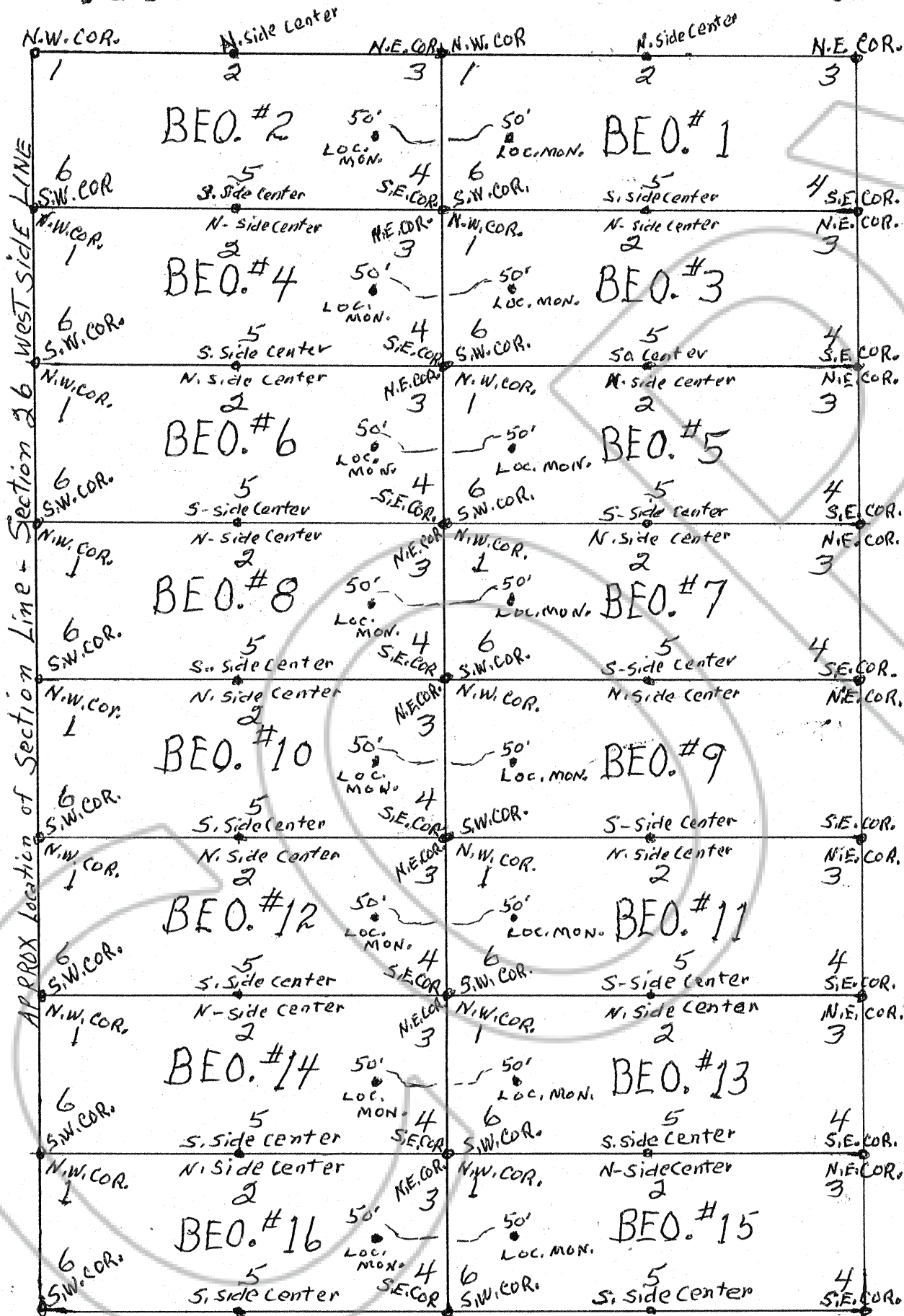
LOCATED February 24th 1983

By MARTIN MILANO

P.O. Box 14

BEOHAVE, NEVADA 89821

CLAIMS IN WEST $\frac{2}{3}$ s of Sec. 26
T-31-N- R.49-E



CLAIMS ARE IN THE
BEOHAVE Quadrangle
MAP of Geological
Survey -

15 MINUTE Series
(Topographic)

1 1/2 Miles EAST OF
STATE ROUTE 21 NOW
SR-306.

NOTE

ALL MONUMENTS
HAVE INGRAVED
METAL MARKERS
ATTACHED TO IDENTIFY
EACH CORNERS AND
CENTERS OF EACH
CLAIM

NOTE: ALL MONUMENTS ARE 4"x4" Wooden Posts 4'6" Long

Filed
RECORDED AT THE REQUEST OF Martin Milano
on April 1, 1983, at 04 mins. past 11 A.M. in
book of ORIGINAL RECORDS page RECORDS OF
M.N. REBALEATI, Recorder
EUREKA COUNTY, NEVADA.
File No. 87334
Fee \$ 240.00

87334