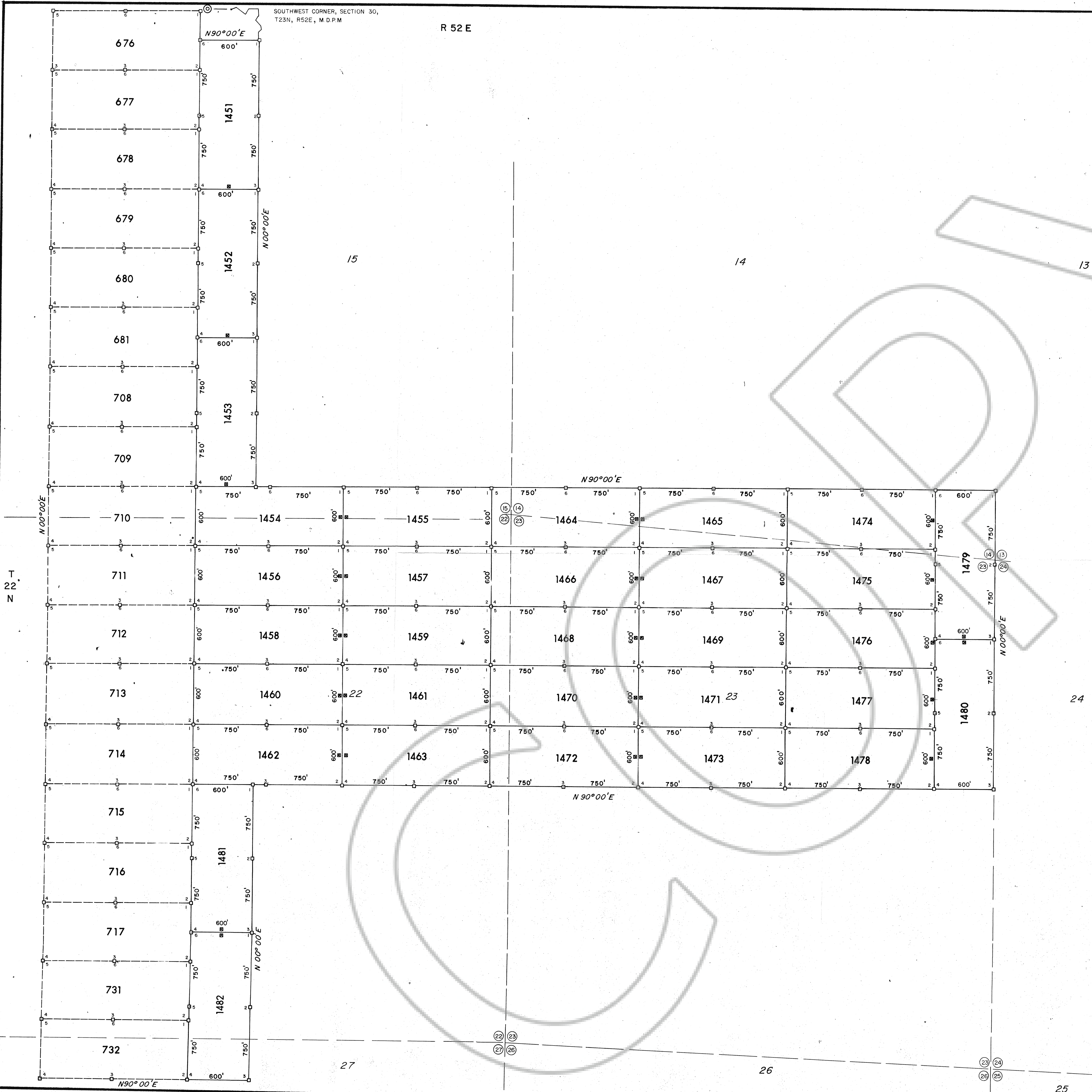


SOUTHWEST CORNER, SECTION 30,
T23N, R52E, M.D.P.M.

R 52 E



NOTE:

- (1) ALL CLAIMS NAMED MH LODE
- (2) BEARINGS ARE TRUE BEARINGS
- (3) TIES FROM THE SOUTHWEST CORNER SECTION 30, T23N, R52E, M.D.P.M., EUREKA COUNTY, NEVADA, TO THE NORTHEAST CORNER OF:
NO. 1451 SOUTH 15900' EAST 21600'
- (4) LOCATION DATES:
FEBRUARY 8, 1983 NO. 1451 THROUGH 1482

Filed AT THE REQUEST OF **EXXON CORP**
on April 25, 1983, at 19 mins. past 8 A.M. in
EUREKA COUNTY, NEVADA. RECORDS OF
File No. 87458 M.N. REBALEATI, Recorder
Fee \$ 480.00

- LEGEND:
- ⊙ INDICATES BRASS MONUMENT SECTION CORNER
 - INDICATES 4" X 4" X 5' WOOD POST MONUMENT
 - ⊙ ⊙ INDICATES SECTION CORNER BY PROTRACTION DIAGRAM
 - ⊙ ⊙ INDICATES PREVIOUSLY LOCATED MH LODE MINING CLAIMS
 - ⊙ ⊙ INDICATES 4" X 4" X 5' WOOD POST LOCATION MONUMENT LOCATED MIDWAY BETWEEN TWO SIDE LINES AND 10' FROM END LINE OF CLAIM.

EXXON MINERALS COMPANY P.O. BOX 4508 HOUSTON, TEXAS 77210			
LOCATION EUREKA COUNTY, NEVADA MT. HOPE MINING DISTRICT			
TITLE MAP OF MH LODE MINING CLAIMS			
SCALE 1" = 500'			
DRAWN BY BWM, DMC	DATE 2/83	CHECKED BY	DATE
APPR./REV. BY	DATE	APPR./REV. BY ATJ	DATE 2/83
APPR./REV. BY	DATE	ORIGINATOR	DATE
DRAWING NUMBER ONE	SCALE 1" = 500'	REVISION NUMBER	SHEET 1 OF 1