



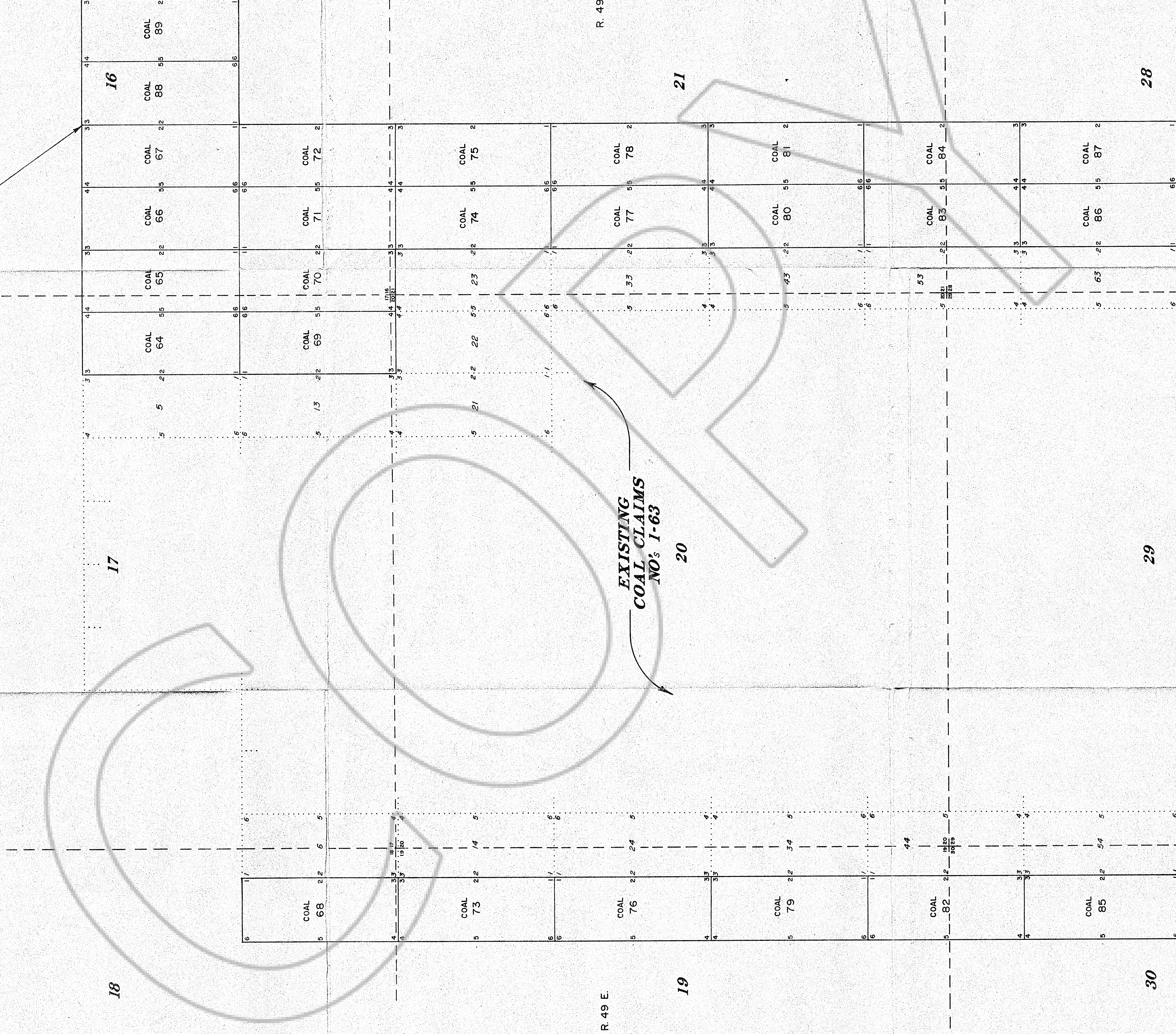
SCALE IN FEET  
500' 250' 0' 500'

FOUND SECTION CORNER

T. 25 N.  
R. 49 E.  
M.D.B.M.

T. 25 N.

S 35° 39' 19" E  
2830.64 FT.



**LOCATION DATES:**

- 64-67, 88, 89 ..... 13 MAY 1983
- 69-72, 76, 79 ..... 14 MAY 1983
- 77, 78, 80, 81 ..... 15 MAY 1983
- 73, 75, 79, 82, 85 ..... 16 MAY 1983
- 68, 83, 84, 86, 87 ..... 17 MAY 1983

T. 25 N.

30

29

28

R. 49 E.

R. 49 E.

19

20

21

**AMSELCO EXPLORATION INC.**

MAP SHOWING COAL CLAIMS NOS. 64-89  
UNPATENTED MINING CLAIMS LOCATED IN SECTIONS 16, 17, 18, 19,  
20, 21, 28, 29, & 30, T. 25N., R. 49E., M.D.B.M., EUREKA CO., NV.  
CLAIMS FILED BY:  
AMSELCO EXPLORATION, INC.  
90 WEST FIFTH STREET, SUITE 100  
EUREKA, CALIFORNIA 95501  
DATED AND POSTED ON THE GROUND  
MAY 13, 14, 15, 16 AND 17, 1983

FILED AT THE REQUEST OF AMSELCO EXPLORATION INC  
on June 26, 1983 at 2:42 p.m. per S. J. L. in  
EUREKA COUNTY, NEVADA  
RECORDS OF  
S. J. L.  
File No. 877631

Approved By: \_\_\_\_\_  
Date: \_\_\_\_\_  
Drawn By: K.L.  
Revision: \_\_\_\_\_