

R. 51 E. | R. 52 E.

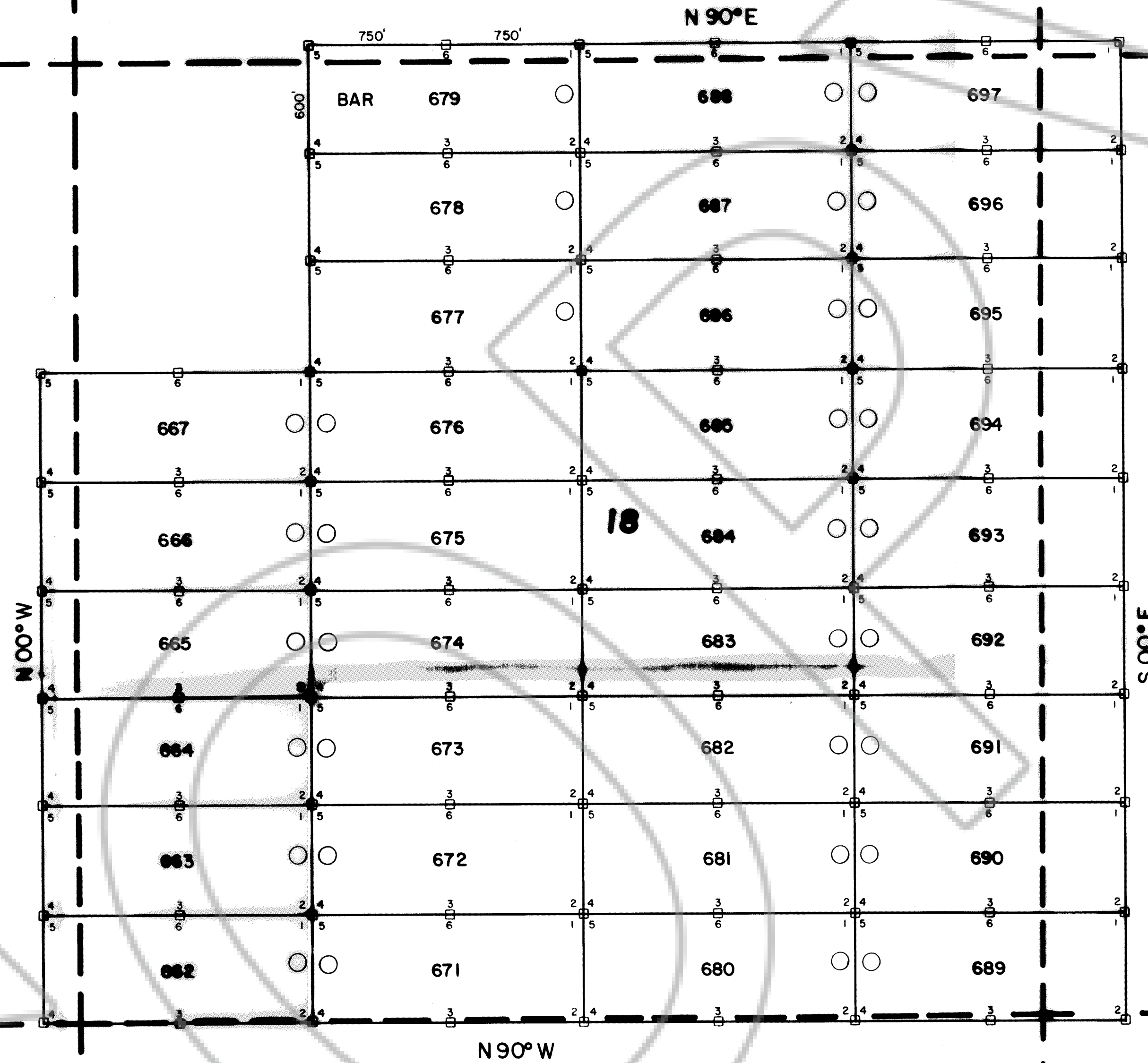
7

EUREKA CO.  
ELKO CO.

13

17

T.  
34  
N.



BAR CLAIMS 1-801  
LOCATED-JUNE 7-20, 1983

○ = LOCATION MONUMENT  
ALL CLAIMS ARE 600'x1500' UNLESS OTHERWISE NOTED.  
ALL LOCATION MONUMENTS ARE OFFSET 10' FROM END CENTERS UNLESS OTHERWISE NOTED.

ALL LOCATION MONUMENTS, SIDE CENTERS AND CORNERS ARE MONUMENTED WITH 4" DIAMETER BY 5' IN LENGTH PVC PIPE.

# MAP

OF  
LODE MINING CLAIMS  
WITHIN  
TOWNSHIP 34 NORTH, RANGES 51 & 52 EAST  
MOUNT DIABLO MERIDIAN  
EUREKA COUNTY, NEVADA  
FOR

ROCKY MOUNTAIN SURVEYORS, INC.

P.O. BOX 14057  
ALBUQUERQUE, NEW MEXICO 87191

Filed AT THE REQUEST OF Rocky Mountain Surveyors  
on July 28, 1983 at 9:48 a.m. past 11 A.M. in  
RECORDS OF  
EUREKA COUNTY, NEVADA. M.N. REBALEATI, Recorder  
File No. 88296 Fee \$ 495.00

## SURVEYORS' CERTIFICATION

I, DOUGLAS F. STERCK, NEVADA REGISTERED PROFESSIONAL LAND SURVEYOR NO. 4015, DO HEREBY CERTIFY THAT THE ACCURACY OF CLAIMS SHOWN HEREON ARE BY BRUNTON COMPASS AND CHAIN MEASUREMENT, AND ARE NOT BASED ON AN ACTUAL INSTRUMENT SURVEY. SAID CLAIMS WERE COMPLETED BY ME OR UNDER MY DIRECT SUPERVISION AND CONFORM TO NEVADA REVISED STATUTES PERTAINING TO THE LOCATION OF LOSE MINING CLAIMS.

*Douglas F. Sterck* July 22, 1983  
DOUGLAS F. STERCK DATE  
NRLS NO. 4015

