

**WP LODE MINING CLAIMS
NO's 63 - 98
EUREKA COUNTY, NEVADA**

OWNERS:

**INTERNATIONAL METALS & ENERGY
SUITE 1020, WICHITA TOWER
WICHITA FALLS, TEXAS
76301**

20

T 35 N

21

22

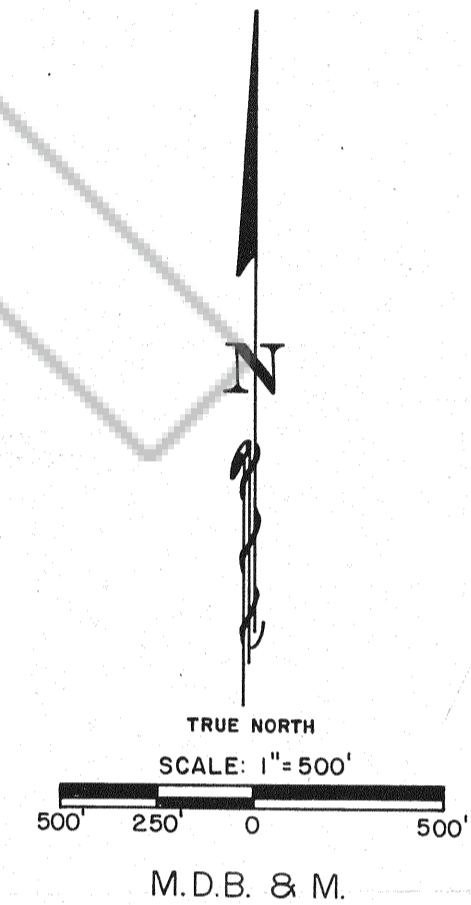
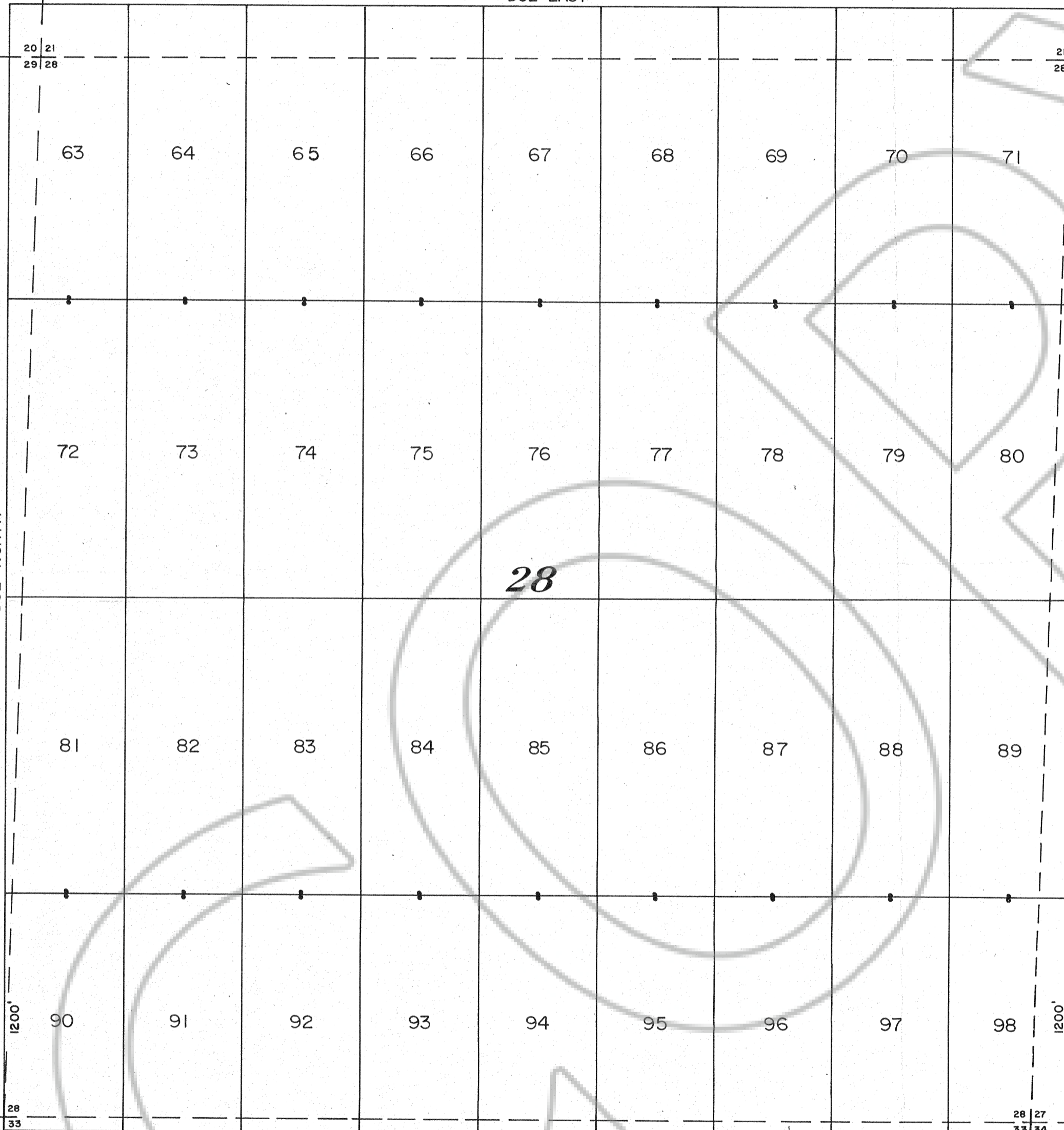
DUE EAST

R 51 E
29

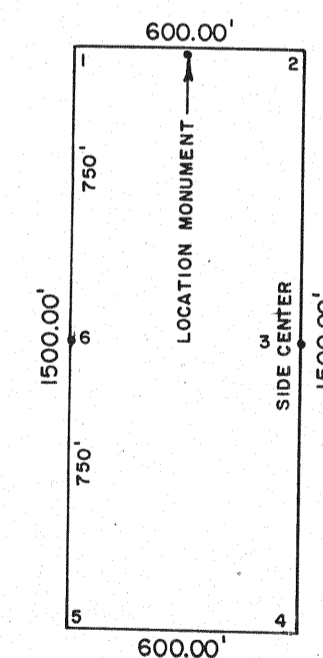
DUE NORTH

R 51 E
27

DUE SOUTH



**TYPICAL CLAIM
&
CORNER NUMBERS**



NOTES:

ALL LODE CLAIMS ARE 600' x 1500' EXCEPT NO's 90 - 98 WHICH ARE 600' x 1200'.

ALL LOCATION MONUMENTS ARE 10' FROM THE END CENTERS.

ALL CLAIM CORNERS, SIDE CENTERS & LOCATION MONUMENTS ARE 4" x 4" x 4-1/2' WOODEN POST.

LOCATION DATES:

NO's 63 - 98 13 JULY 1983

Filed
RECORDED AT THE REQUEST OF **INTERNAT'L METAL & ENERGY**
on August 13, 1983, at 36 mins. past 1 P.M. in
book _____ of **OFFICIAL RECORDS**, page _____, RECORDS OF
EUREKA COUNTY, NEVADA. M.N. REBALEATI, Recorder
File No. 88516 Fee \$ 540.00