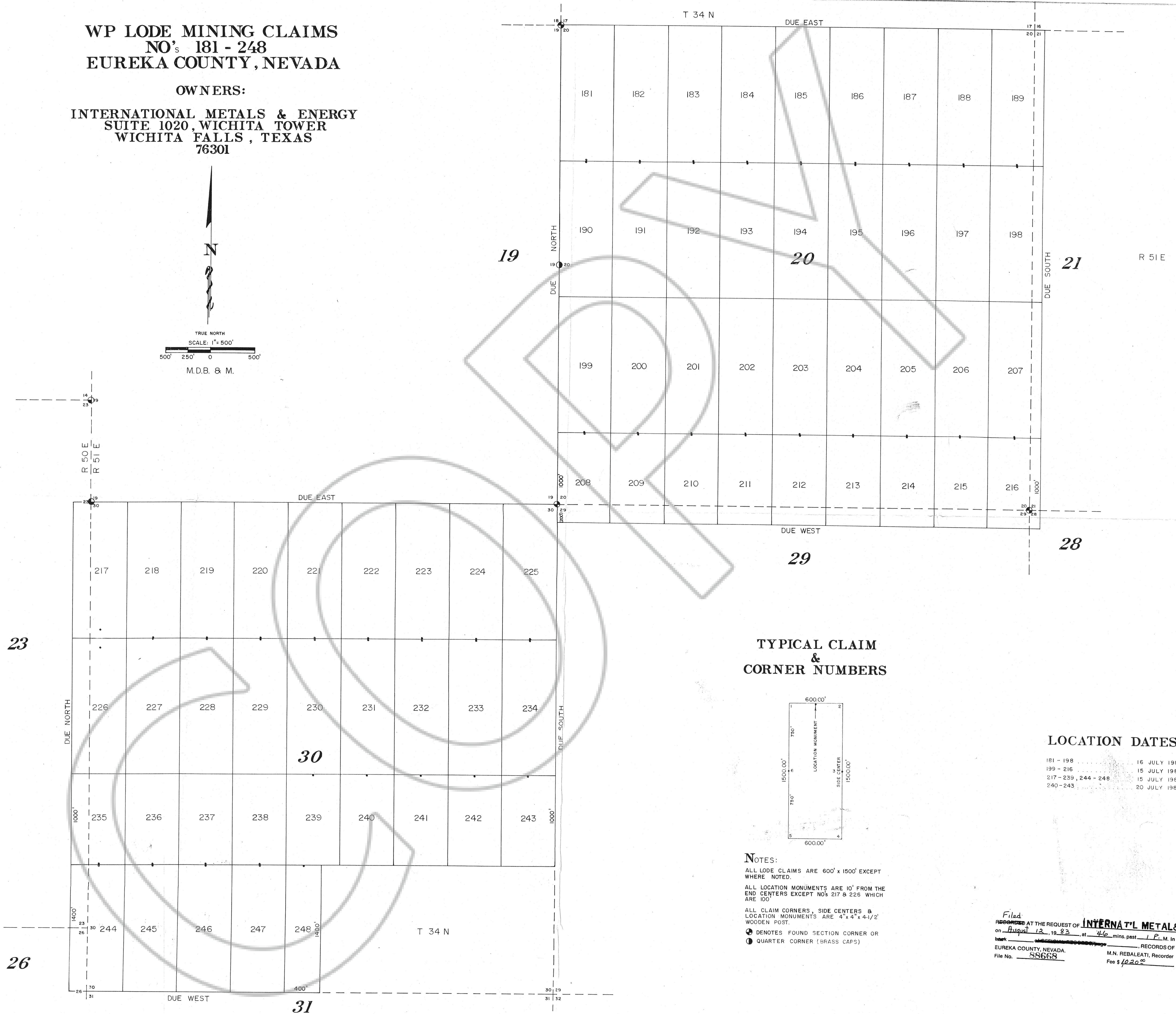
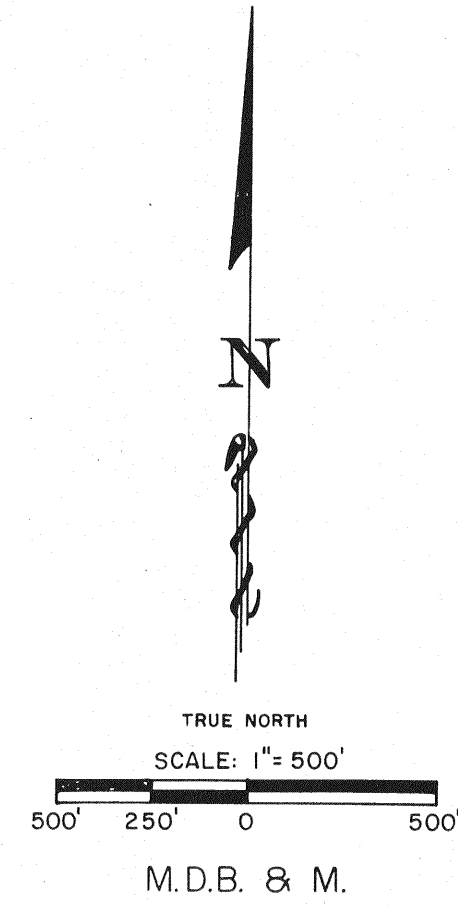


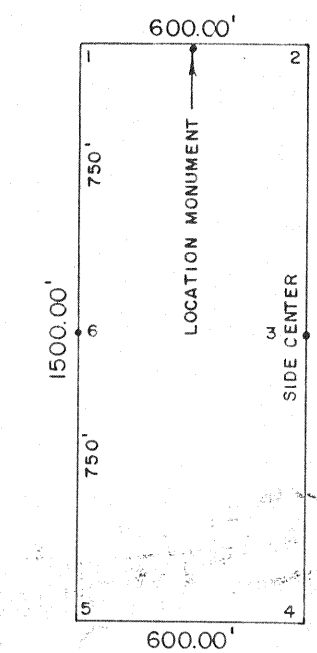
**WP LODE MINING CLAIMS
NO's 181 - 248
EUREKA COUNTY, NEVADA**

OWNERS:

**INTERNATIONAL METALS & ENERGY
SUITE 1020, WICHITA TOWER
WICHITA FALLS, TEXAS
76301**



**TYPICAL CLAIM
&
CORNER NUMBERS**



NOTES:
ALL LODE CLAIMS ARE 600' x 1500' EXCEPT WHERE NOTED.

ALL LOCATION MONUMENTS ARE 10' FROM THE END CENTERS EXCEPT NO'S 217 & 226 WHICH ARE 100'

ALL CLAIM CORNERS, SIDE CENTERS & LOCATION MONUMENTS ARE 4" x 4" x 4-1/2" WOODEN POST.

☉ DENOTES FOUND SECTION CORNER OR
⊙ QUARTER CORNER (BRASS CAPS)

LOCATION DATES:

181 - 198	16 JULY 1983
199 - 216	15 JULY 1983
217 - 239, 244 - 248	15 JULY 1983
240 - 243	20 JULY 1983

Filed
RECORDED AT THE REQUEST OF **INTERNATIONAL METALS & ENERGY**
on August 12, 1983, at 4:46 mins. past 1 P. M. in
bank _____ RECORDS OF
EUREKA COUNTY, NEVADA. M.N. REBALEATI, Recorder
File No. 88668 Fee \$ 10.00