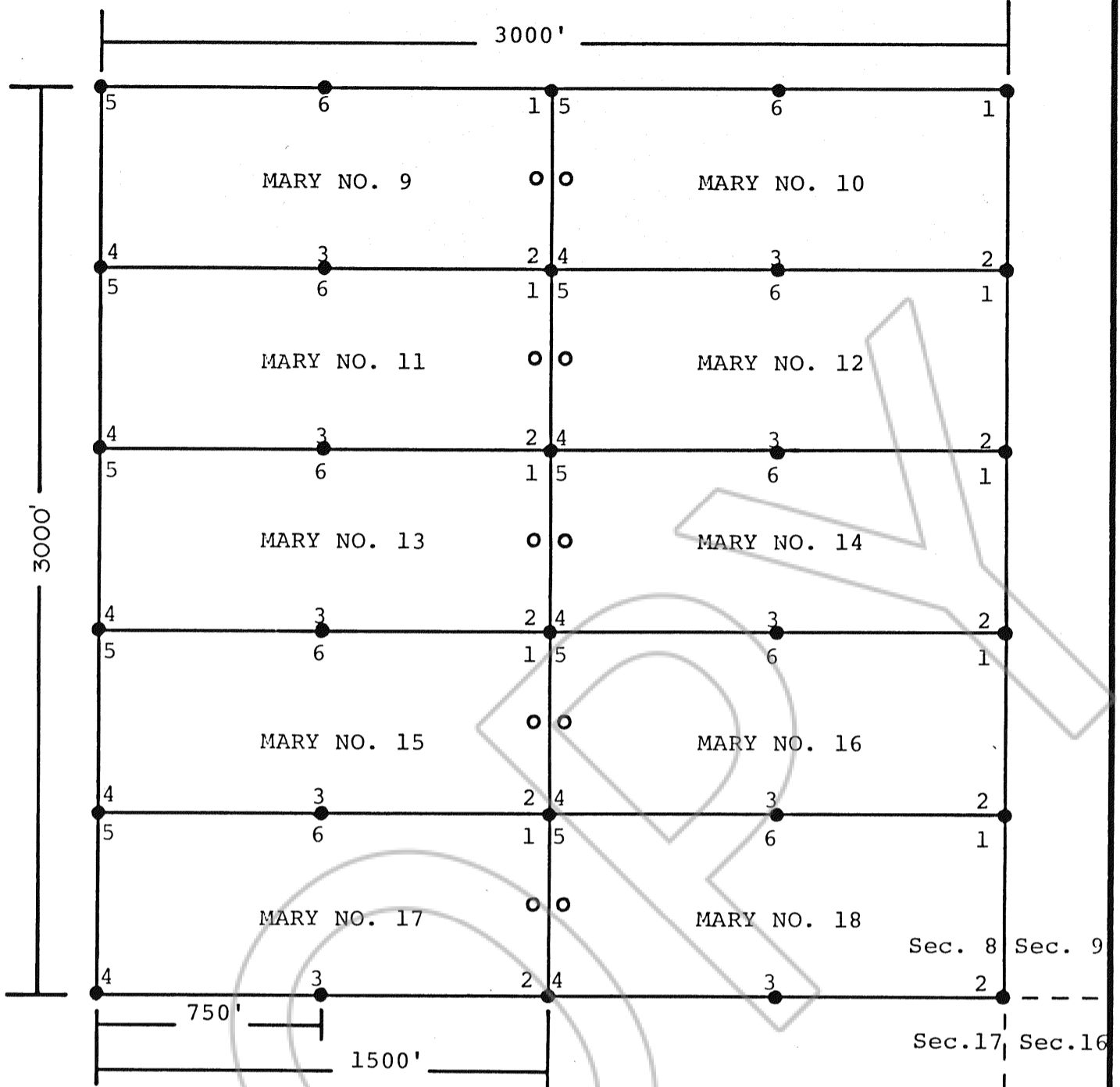


North, 2280' to NE Cor. Sec. 8, T33N-R51E.



LEGEND

- Corner or Side Center
- Location Monument

THE MARY GROUP OF LODE MINING CLAIMS, located on August 5, 1983, are situated in Section 8, T33N-R51E, M.D. B&M, Maggie Creek Mining District, Eureka County, Nevada. They are tied in a general way to the NE Corner of Section 8, T33N-R51E. This map is filed with and made a part of the Location Certificates of said claims.

Dated this 9TH day of August, 1983

LABRADEX CORPORATION
1280 TERMINAL WAY, SUITE #27
RENO, NEVADA 89502

-Locator-

TRUE NORTH

BY: Sam E. Monteleone
Sam E. Monteleone
-AGENT-

LABRADEX CORP

August 1983	LABRADEX CORPORATION RENO, NEVADA	Scale: 1"=500'
	Map of the MARY LODE CLAIM GROUP EUREKA COUNTY, NEVADA	

RECORDED AT THE REQUEST OF LABRADEX CORP
on August 17, 1983, at 23 mins. past 11 A.M. In
Book _____ of OFFICIAL RECORDS, page _____, RECORDS OF
EUREKA COUNTY, NEVADA. M.N. REBALEATI, Recorder
File No. 88702 Fee \$ 150⁰⁰