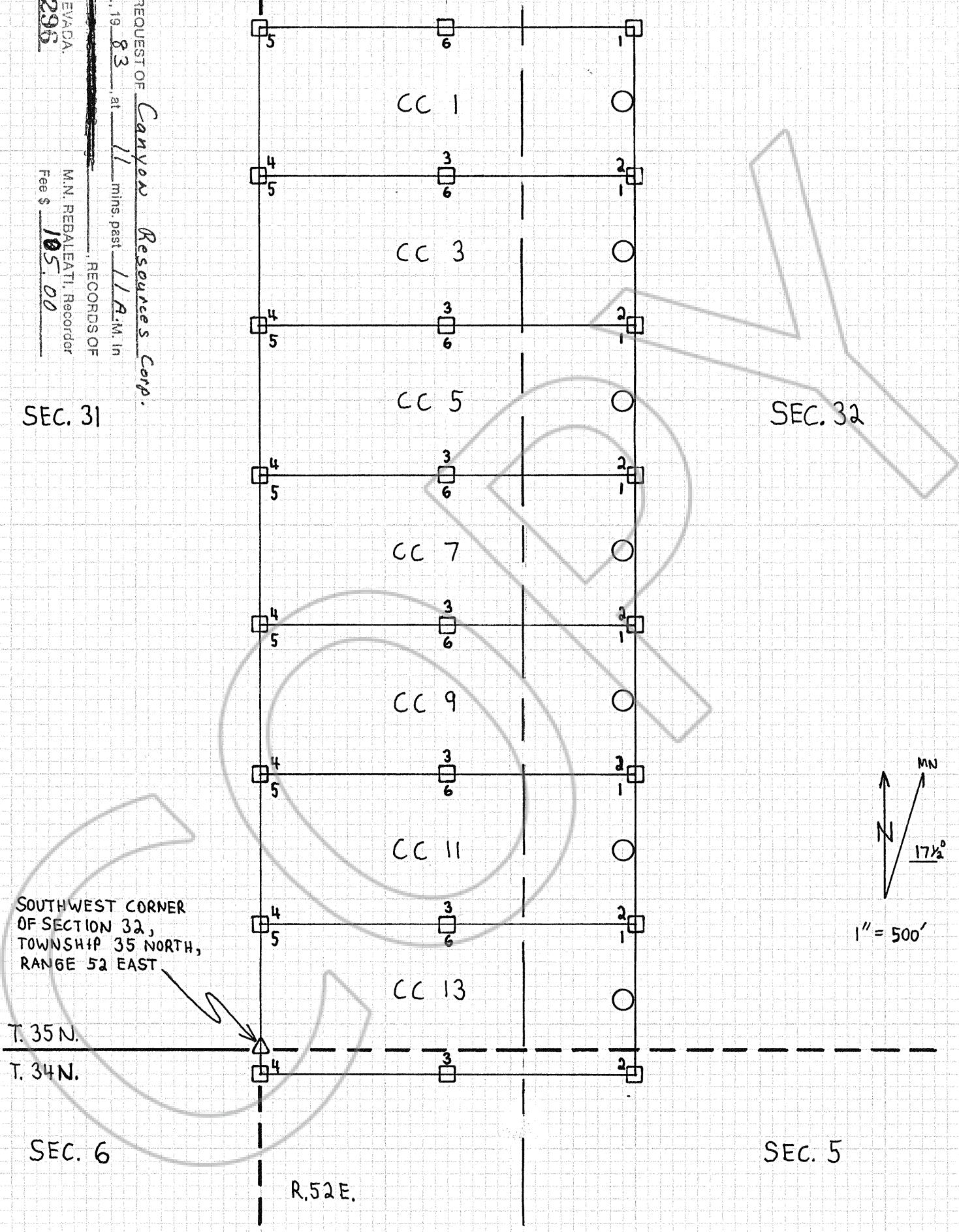


Filed ~~at~~ AT THE REQUEST OF Canyon Resources Corp.  
 on Sept. 28, 1983 at 11 mins. past 11 A.M. in  
 EUREKA COUNTY, NEVADA.  
 File No. 89295  
 M.N. REBALEATI, Recorder  
 Fee \$ 105.00  
 RECORDS OF

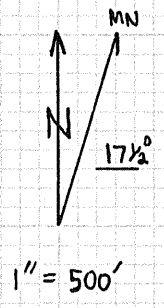
R.52E.  
 EUREKA COUNTY  
 ELKO COUNTY

SEC. 31

SEC. 32



SOUTHWEST CORNER  
 OF SECTION 32,  
 TOWNSHIP 35 NORTH,  
 RANGE 52 EAST



- LOCATION MONUMENT, OFFSET 10' FROM END CENTER
- CORNER OR SIDE CENTER
- PROTRACTED SECTION LINE
- SURVEYED SECTION LINE
- COUNTY LINE

MAP  
 OF  
 CC LODE MINING CLAIMS  
 WITHIN  
 TOWNSHIP 35 NORTH, RANGE 52 EAST  
 MOUNT DIABLO MERIDIAN  
 EUREKA AND ELKO COUNTIES  
 NEVADA  
 FOR

ALL LOCATION MONUMENTS, SIDE CENTERS AND CORNERS  
 ARE MONUMENTED WITH 4" DIAMETER BY 5' IN LENGTH PVC PIPE  
 CC CLAIMS LOCATED SEPTEMBER 2, 1983

CANYON RESOURCES CORPORATION  
 2207 JACKSON ST., SUITE 8101  
 GOLDEN, COLORADO 80401