

3 53 58 21
3 53 58 21

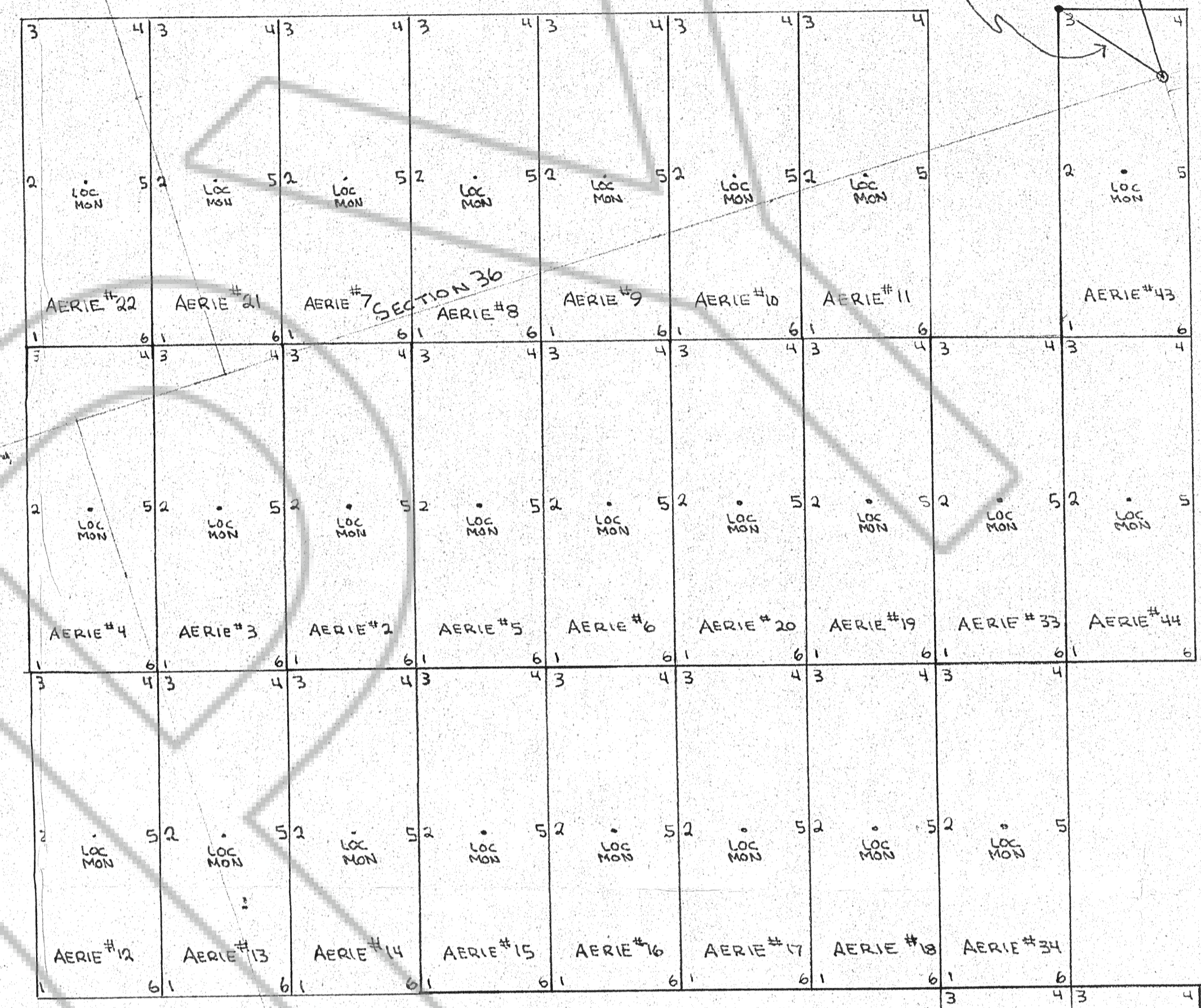
FROM BRASS CAP TO N.W. CORNER
OF AERIE #43
TRUE BEARING N 39° 50' 31" W
DISTANCE 588.58'

SECTION 6

TRUE NORTH

SCALE 1" = 500'

- LEGEND: AERIE C
JERRY D
- 1 S.W. CORNER
 - 2 W. SIDE CENT.
 - 3 N.W. CORNER
 - 4 N.E. CORNER
 - 5 E. SIDE CENT.
 - 6 S.E. CORNER
 - ⊙ BRASS CAP, 536, R49E.
- NOTE: ALL MONUMENTS, CORNERS, CENTERS 4" x 5" PL.



T28N R49E
T27N R49E

SECTION 35

SECTION 12
SECTION 13

SECTION 11

Filed
 RECORDED AT THE REQUEST OF Jerry D. Oak
 on October 24, 1983, at 07 mins. past 1 P. M. In
 Book _____ of OFFICIAL RECORDS, page _____, RECORDS OF
 EUREKA COUNTY, NEVADA. M.N. REBALEATI, Recorder
 File No. 89976 Fee \$ 150.00

