

1

AFFIDAVIT OF ASSESSMENT WORK

2

3

STATE OF NEVADA)
)ss:
4 COUNTY OF EUREKA)

5

6

7

HAROLD DRIMMER, being first duly sworn, upon oath,
deposes and states as follows:

8

9

10 1. As a person cognizant of the facts, he makes this
11 affidavit for and on behalf of Mount Hope Mines, Inc., a New
12 York corporation, of which he is president, with its principal
13 place of business at 65 West Red Oak Lane, White Plains, New
14 York 10604, owner of the unpatented mining claims set forth in
15 Schedule A attached hereto.

16

17

18

19

20

21

22

23

24

25

26

27

28

29

30

2. The undersigned, who is associated with Mount
Hope Mines, Inc. on whose behalf the following described work
was performed or improvements made, certifies that at least
TWENTY THOUSAND (\$20,000) DOLLARS were expended, and/or the
following labor expended or improvements made having a value
thereof, consisting of: geophysical work, surface mapping,
sampling, resurveying, assaying, geological evaluations,
diamond core drilling and review of evaluations and results of
maintenance and repair work which were performed on the unpat-
ented mining claims set forth in Schedule A, attached hereto
and forming a part hereof, all situated in the Mount Hope
Mining District of Eureka, State of Nevada, during the year
ending 12 noon, September 1, 1983.

31

32

33

34

35

36

37

38

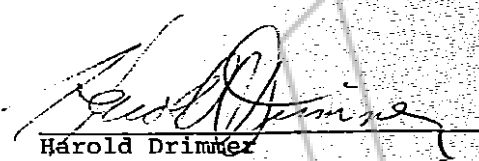
39

40

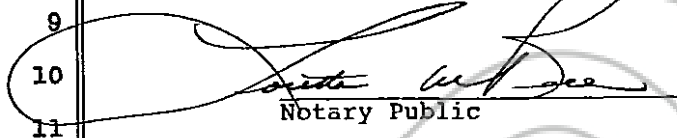
3. Such expenditure was made by the Exxon Corpo-
ration for the purpose of holding the unpatented claims, which
are valuable, pursuant to special agreement with Mount Hope

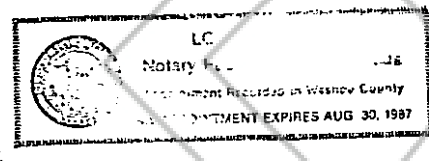
1
2
3
4
5
6
7
8
9
10
11
12
13
14
15
16
17
18
19
20
21
22
23
24
25
26
27
28
29
30

Mines, Inc. and without prejudice to the rights of either Exxon
or Mount Hope Mines, Inc.


Harold Drimmer

Subscribed and sworn to before me
this 26th day of September, 1983.


Notary Public



MOUNT HOPE MINES, INCORPORATED
 65 WEST RED OAK LANE
 WHITE PLAINS, NEW YORK 10604

MINING CLAIMS EXHIBITS

STATE: NEVADA

COUNTY: EUREKA

Claim Name	Claim				BLM MC #	Recorded	
	No.	Sect.	Twp.	Rnge.		Eureka Co.	Book / Page
Bowser	1	7, 18	22N	52E	NMC97479	8	457
Bowser	2	12, 13	22N	51.5E	NMC97480	8	458
Bowser	2	7, 18	22N	52E	NMC97480	8	458
Bowser	3	12, 13	22N	51.5	NMC97481	8	459
Bowser	4	12, 13	22N	51.5E	NMC97482	9	426
Bowser	4	12, 1	22N	51E	NMC97482	9	426
Bowser	8	18	22N	52E	NMC97483	23	109
Bowser	9	18	22N	52E	NMC97484	23	110
Bowser	11	7, 18	22N	52E	NMC97485	9	427
Bowser	11-A	7	22N	52E	NMC97546	23	111
Bowser	11-B	7	22N	52E	NMC97547	29	244
Bowser	12	7	22N	52E	NMC97486	9	428
Bowser	12	12	22N	51.5E	NMC97486	9	429
Bowser	12-A	7	22N	52E	NMC97548	23	112
Bowser	12-A	12	22N	51.5E	NMC97548	23	112
Bowser	12-B	7	22N	52E	NMC97549	37	143
Bowser	12-B	12	22N	51.5E	NMC97549	37	143
Bowser	14	18	22N	52E	NMC97487	9	429
Bowser Fraction	14	18	22N	52E	NMC97566	23	113
Bowser	15	7, 18	22N	52E	NMC97488	9	430
Bowser Fraction	15	7, 18	22N	52E	NMC97567	23	114
Bowser	16	7	22N	52E	NMC97489	37	144
Bowser	17	7, 6	22N	52E	NMC97490	23	115
Bowser	17	12	22N	51.5E	NMC97490	23	115
Bowser	17-A	7	22N	52E	NMC97550	23	116
Bowser	17-C	7	22N	52E	NMC97551	23	117
Bowser	18	1, 12	22N	51.5E	NMC97491	23	118
Bowser	18	6, 7	22N	52E	NMC97491	23	118
Bowser	19	1, 12	22N	51.5	NMC97492	23	119
Bowser	20	1, 12	22N	51.5	NMC97493	23	120
Bowser	20-A	1, 12	22N	51.5	NMC97552	23	121
Bowser	21	12	22N	51.5	NMC97494	23	122
Bowser	21-A	12, 13	22N	51.5	NMC97553	30	144
Bowser	22	12	22N	51.5E	NMC97495	23	123
Bowser	22	7	22N	52E	NMC97495	23	123
Bowser	22-A	12	22N	51.5E	NMC97554	23	124
Bowser	22-A	7	22N	52E	NMC97554	23	124
Bowser	22-B	7	22N	52E	NMC97555	23	125
Bowser	22-C	7	22N	52E	NMC-97556	29	245
Bowser	23	12	22N	51.5	NMC97496	23	126
Bowser	23-A	12, 13	22N	51.5	NMC97557	30	145
Bowser	24	12	22N	51.5	NMC97497	23	127
Bowser	25	12	22N	51.5	NMC97498	23	128
Bowser	25-A	12, 13	22N	51.5E	NMC97558	30	146
Bowser	25-A	1, 2	22N	51E	NMC97558	30	146
Bowser	26	12	22N	51.5	NMC97499	23	129
Bowser	27	12	22N	51.5E	NMC97500	23	130
Bowser	27	1	22N	51E	NMC97500	23	130
Bowser	27-A	12	22N	51.5E	NMC97559	30	147
Bowser	27-A	1	22N	51E	NMC97559	30	147

MOUNT HOPE MINES, INCORPORATED
 65 WEST RED OAK LANE
 WHITE PLAINS, NEW YORK 10604

MINING CLAIMS EXHIBITS

STATE: NEVADA

COUNTY: EUREKA

Claim Name	Claim				BLM MC #	Recorded Eureka Co.	
	No.	Sect.	Twp.	Rnge.		Book /	Page
Bowser	28	12	22N	51.5	NMC97501	23	131
Bowser	29	12	22N	51.5E	NMC97502	23	132
Bowser	29	1	22N	51E	NMC97502	23	132
Bowser	29-A	1	22N	51E	NMC97560	30	148
Bowser	30	12	22N	51.5E	NMC97503	23	133
Bowser	30	1	22N	51E	NMC97503	23	133
Bowser	31	1	22N	51E	NMC97504	23	134
Bowser	31	12	22N	51.5E	NMC97504	23	134
Bowser	31-A	1	22N	51E	NMC97561	29	297
Bowser	32	1, 12	22N	51.5E	NMC97505	23	135
Bowser	32	1	22N	51E	NMC97505	23	135
Bowser	32	36	23N	51E	NMC97505	23	135
Bowser	33	1	22N	51E	NMC97506	23	136
Bowser	33-A	1	22N	51E	NMC97562	29	298
Bowser	34	1	23N	51E	NMC97505	23	135
Bowser	34	1	22N	51.5E	NMC97507	23	137
Bowser	34	36	23N	51E	NMC97507	23	137
Bowser	35	1	22N	51E	NMC97508	23	138
Bowser	35-A	1	22N	51E	NMC97563	29	299
Bowser	36	1	22N	51E	NMC97509	23	139
Bowser	37	1	22N	51E	NMC97510	23	140
Bowser	37-A	1	22N	51E	NMC97564	29	300
Bowser	38	1	22N	51E	NMC97511	23	141
Bowser	38	36	23N	51E	NMC97511	23	141
Bowser	43	1	22N	51E	NMC97512	24	2
Bowser	43	36	23N	51E	NMC97512	24	2
Bowser	44	1	22N	51E	NMC97513	24	3
Bowser	45	1	22N	51E	NMC97514	24	4
Bowser	45	36	23N	51E	NMC97514	24	4
Bowser	46	1	22N	51E	NMC97515	24	5
Bowser	47	1	22N	51E	NMC97516	24	6
Bowser	47	36	23N	51E	NMC97516	24	6
Bowser	48	1	22N	51E	NMC97517	24	7
Bowser	49	36	23N	51E	NMC97518	24	8
Bowser	49	1	22N	51E	NMC97518	24	8
Bowser	50	1	22N	51E	NMC97519	24	9
Bowser	50	36	23N	51E	NMC97519	24	9
Bowser	51	36	23N	51E	NMC97520	24	10
Bowser	52	36	23N	51E	NMC97521	24	11
Bowser	52	1	22N	51E	NMC97521	24	11
Bowser	53	36	23N	51E	NMC97522	24	12
Bowser	54	36	23N	51E	NMC97523	24	13
Bowser	54	1	22N	51E	NMC97523	24	13
Bowser	55	35, 36	23N	51E	NMC97524	24	14
Bowser	56	35, 36	23N	51E	NMC97525	24	15
Bowser	56	1, 2	22N	51E	NMC97525	24	15
Bowser	57	35	23N	51E	NMC97526	24	16
Bowser	58	35	23N	51E	NMC97527	24	17
Bowser	58	2	22N	51E	NMC97527	24	17

MOUNT HOPE MINES, INCORPORATED
 65 WEST RED OAK LANE
 WHITE PLAINS, NEW YORK 10604

MINING CLAIMS EXHIBITS

STATE: NEVADA

COUNTY: EUREKA

<u>Claim Name</u>	<u>Claim No.</u>	<u>Sect.</u>	<u>Twp.</u>	<u>Rnge.</u>	<u>BLM MC #</u>	<u>Recorded Eureka Co. Book / Page</u>
Bowser	59	35	23N	51E	NMC97528	24 18
Bowser	60	35	23N	51E	NMC97529	24 19
Bowser	60	2	22N	51E	NMC97529	24 19
Bowser	61	1, 2	22N	51E	NMC97530	24 20
Bowser	62	1, 2	22N	51E	NMC97531	24 21
Bowser	63	1	22N	51E	NMC97532	24 22
Bowser	64	1	22N	51E	NMC97533	24 23
Bowser	65	1	22N	51E	NMC97534	24 24
Bowser	66	1	22N	51E	NMC97535	24 25
Bowser	67	1	22N	51E	NMC97536	24 26
Bowser	68	1	22N	51E	NMC97537	24 27
Bowser	69	1	22N	51E	NMC97538	24 28
Bowser	70	1	22N	51E	NMC97539	24 29
Bowser	71	2	22N	51E	NMC97540	24 30
Bowser	72	2, 11	22N	51E	NMC97541	24 31
Bowser	73	1, 2	22N	51E	NMC97542	24 32
Bowser	74	1, 2	22N	51E	NMC97543	24 33
Bowser	74	11, 12	22N	51E	NMC97543	24 33
Bowser	75	1	22N	51E	NMC97544	24 34
Bowser	76	1, 12	22N	51E	NMC97545	24 35
Bowser Fraction	0	16	22N	52E	NMC97565	8 456
Bowser Fraction	0	13	22N	51.5E	NMC97565	8 456
Hope	1	12	22N	51E	NMC97571	36 566
Hope	2	12, 13	22N	51E	NMC97572	36 567
Hope	3	12	22N	51E	NMC97573	36 568
Hope	4	12, 13	22N	51E	NMC97574	36 569
Hope	5	12	22N	51E	NMC97575	36 570
Hope	6	12, 13	22N	51E	NMC97576	36 571
Hope	7	12	22N	51E	NMC97577	36 572
Hope	8	12	22N	51E	NMC97578	36 573
Hope	9	12	22N	51E	NMC97579	36 574
Hope	10	12	22N	51E	NMC97580	36 575
Hope	11	12	22N	51E	NMC97581	36 576
Hope	12	12	22N	51E	NMC97582	36 577
Hope	13	12	22N	51E	NMC97583	36 578
Hope	14	12	22N	51E	NMC97584	36 579
Hope	15	12	22N	51E	NMC97585	36 580
Hope	16	12	22N	51E	NMC97586	36 581
Hope	17	12	22N	51E	NMC97587	36 582
Hope	18	12	22N	51E	NMC97588	36 583
Hope	19	11, 12	22N	51E	NMC97589	36 584
Hope	20	11, 12	22N	51E	NMC97590	36 585

42

MOUNT HOPE MINES, INCORPORATED
 65 WEST RED OAK LANE
 WHITE PLAINS, NEW YORK 10604

MINING CLAIMS EXHIBITS

STATE: NEVADA

COUNTY: EUREKA

<u>Claim Name</u>	<u>Claim No.</u>	<u>Sect.</u>	<u>Twp.</u>	<u>Rnge.</u>	<u>BLM MC #</u>	<u>Recorded Eureka Co. Book / Page</u>
Hope	21	11, 12	22N	51E	NMC97591	36 586
Hope	22	11	22N	51E	NMC97592	36 587
Hope	23	11	22N	51E	NMC97593	36 588
Hope	24	11	22N	51E	NMC97594	36 589
Hope	25	12	22N	51E	NMC97595	36 590
Hope	26	12, 13	22N	51E	NMC97596	36 591
Hope	29	13	22N	51.5	NMC97599	36 594
Hope	30	13, 24	22N	51.5	NMC97600	36 595
Hope	31	13	22N	51.5	NMC97601	36 596
Hope	32	13, 24	22N	51.5	NMC97602	36 597
Hope	33	13	22N	51.5	NMC97603	36 598
Hope	34	13, 24	22N	51.5	NMC97604	36 599
Hope	35	13	22N	51.5	NMC97605	36 600
Hope	36	13, 24	22N	51.5	NMC97606	37 1
Hope	38	13, 24	22N	51.5	NMC97608	37 3
Hope	41	18, 19	22N	52E	NMC97611	37 6
Hope	42	18, 19	22N	52E	NMC97612	37 7
Hope	43	18, 19	22N	52E	NMC97613	37 8
Hope	44	19	22N	52E	NMC97614	37 9
Hope	45	18, 19	22N	52E	NMC97615	37 10
Hope	46	19	22N	52E	NMC97616	37 11
Hope	47	19	22N	52E	NMC97617	37 12
Hope	48	19	22N	52E	NMC97618	37 13
Hope	51	24	22N	51.5	NMC97621	37 16
Hope	52	24	22N	51.5	NMC97622	37 17
Hope	53	24	22N	51.5	NMC97623	37 18
Hope	54	24	22N	51.5	NMC97624	37 19
Hope	57	13	22N	51E	NMC97627	37 22
Hope	58	13	22N	51E	NMC97628	37 23
Hope	59	13	22N	51E	NMC97629	37 24
Hope	60	13	22N	51E	NMC97630	37 25
Hope	61	12, 13	22N	51E	NMC97631	37 26
Hope	62	12, 13	22N	51E	NMC97632	37 27
Hope	63	12, 13	22N	51E	NMC97633	37 28
Hope	64	12, 13	22N	51E	NMC97634	37 29
Hope	65	12, 13	22N	51E	NMC97635	37 30
Hope	68	11, 14	22N	51E	NMC97638	37 33
Hope	69	11, 14	22N	51E	NMC97639	37 34
Hope	71	18	22N	52E	NMC97641	37 36
Hope	72	11, 12	22N	51E	NMC97642	37 37

40

MOUNT HOPE MINES, INCORPORATED
 65 WEST RED OAK LANE
 WHITE PLAINS, NEW YORK 10604

MINING CLAIMS EXHIBITS

STATE: NEVADA

COUNTY: EUREKA

Claim Name	Claim No.	Sect.	Twp.	Rnge.	BLM MC #	Recorded Eureka Co.	
						Book	Page
Hope	73	1, 12	22N	51E	NMC97643	37	38
Hope	74	1, 12	22N	51E	NMC97644	37	39
Hope	75	1	22N	51E	NMC97645	37	40
Hope	76	1, 12	22N	51E	NMC97646	37	41
Hope	77	1	22N	51E	NMC97647	37	42
Hope	78	1, 12	22N	51E	NMC97648	37	43
Hope	79	1	22N	51E	NMC97649	37	44
Hope	80	12	22N	51E	NMC97650	37	45
Hope	81	1, 12	22N	51E	NMC97651	37	46
Hope	82	12	22N	51E	NMC97652	37	47
Hope	83	1, 12	22N	51E	NMC97653	37	48
Hope	84	12	22N	51E	NMC97654	37	49
Hope	88	12	22N	51E	NMC97658	37	73
Hope	89	11, 12	22N	51E	NMC97659	37	53
West Incline	1	1, 12	22N	51E	NMC97568	29	236
West Incline	2	1, 12	22N	51E	NMC97569	29	237
West Incline	3	1, 12	22N	51E	NMC97570	29	238
Lookout	1	8	21N	53E	NMC23201	64	527
Lookout	2	7, 8	21N	53E	NMC23202	64	528
Lookout	3	7	21N	53E	NMC23203	64	529
Bowser	39						
Bowser	40						
Bowser	41						
Bowser	42						
Bowser No. 1 Fraction		16	22N	52E		8	456
Bowser Fraction		13	22N	51.5E		8	456
Hope	27					37	230
Hope	28					37	
Hope	37					37	
Hope	39					37	
Hope	40					37	
Hope	49					37	
Hope	50					37	
Hope	55					37	235
Hope	56					37	
Hope	66					37	
Hope	67					37	
Hope	70					37	241
Hope	85					37	
Hope	86					37	
Hope	87					37	202

RECORDED AT REQUEST OF
 Mt Hope Mines
 BOOK 116 PAGE 59

83 OCT 25 P 3: 28

OFFICIAL RECORDS
 EUREKA COUNTY, NEVADA
 M.N. REBALEATI, RECORDER
 FILE NO. 89977
 FEE \$ 277.50

BOOK 116 PAGE 65