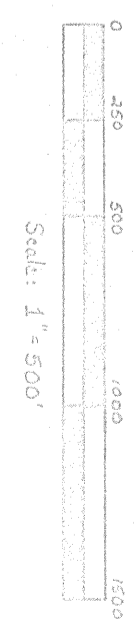


**AZIMUTH INC.**  
 P.O. Box 9324 · Missoula, MT 59807  
 435 N. 3rd W. · (406) 721-5316

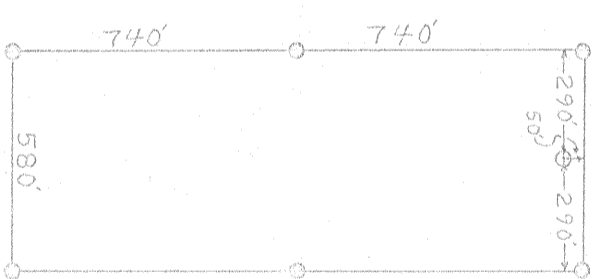
Richmond Lode Mining Claims ~~24-25-27-42, 44-47~~  
 Sections 13, 24, 25, T. 19 N., R. 53 E. and T. 19 N., R. 54 E. (unrevised)  
 Eureka County, Nevada  
~~July 13, 2011~~ **Feb. 1, 1983**



**Explanation**  
 ○ Corner and Side center monuments  
 ○ Discovery monuments

**Filed**  
 RECORDED AT THE REQUEST OF Roland Connors  
 on November 19, 2013 at 30 mins past 11 A.M. in  
 BOOK OFFICIAL RECORDS PAGE RECORDS OF  
 EUREKA COUNTY, NEVADA. Recorder  
 File No. 90082 Fee \$ 420.00

Dimensions for claims:  
 2-12, 14-24, 27-42, 44-47  
 (Dimensions of other claims noted on map)



**Location**  
 Roland Connors  
 81 Meadow Lake Road  
 R.R. 4  
 Golden, CO. 80401