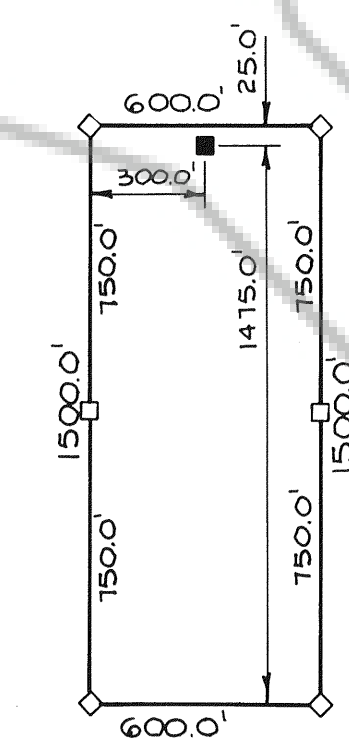
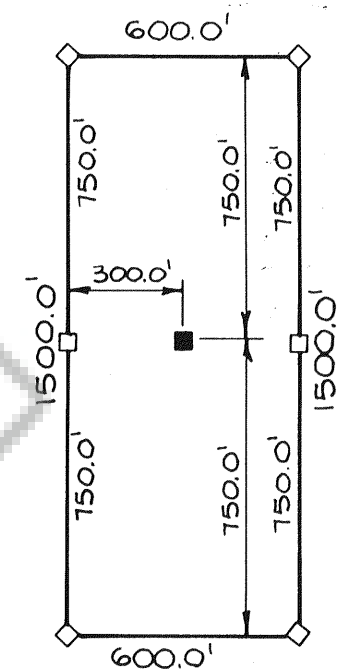


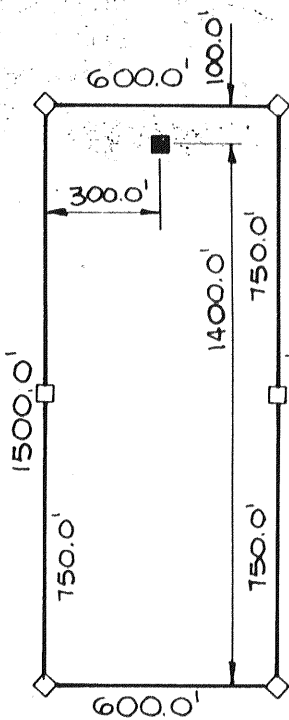
T.26N, R.49E, M.D.M. - SURVEYED
 T.27N, R.48 & 49E, M.D.M. - UNSURVEYED
 BUCKHORN MINING DISTRICT
 EUREKA COUNTY, NEVADA



TYPICAL CLAIM DIMENSIONING FOR ASPEN 49-57 LODE CLAIMS

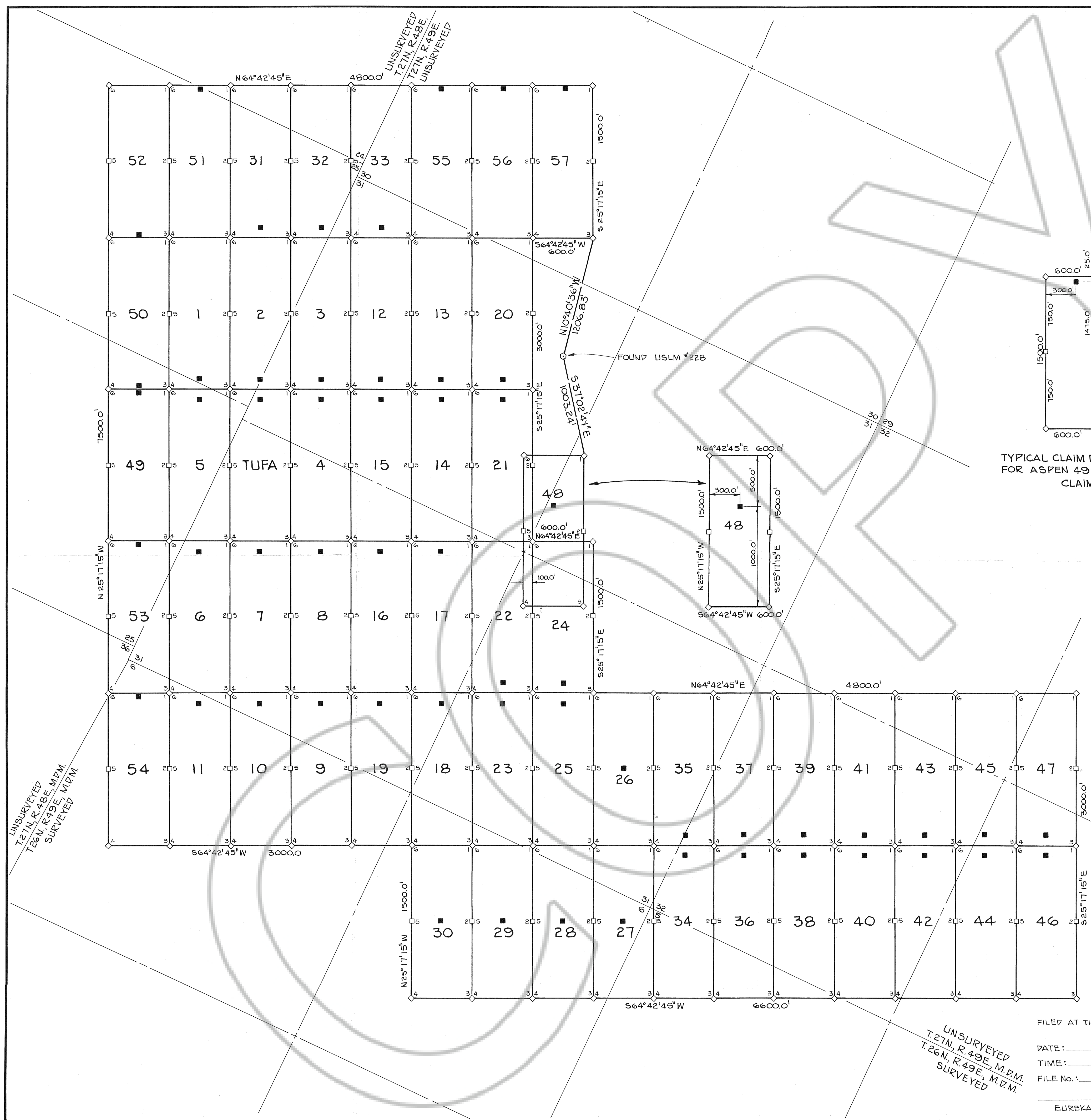


TYPICAL CLAIM DIMENSIONING FOR ASPEN 1-25, 31-33 & TUFA LODE CLAIMS



TYPICAL CLAIM DIMENSIONING FOR ASPEN 26-30 LODE CLAIMS

ASPEN 48 DIMENSIONED AS NOTE D



UNSURVEYED
 T.27N, R.48E, M.D.M.
 T.26N, R.49E, M.D.M.
 SURVEYED

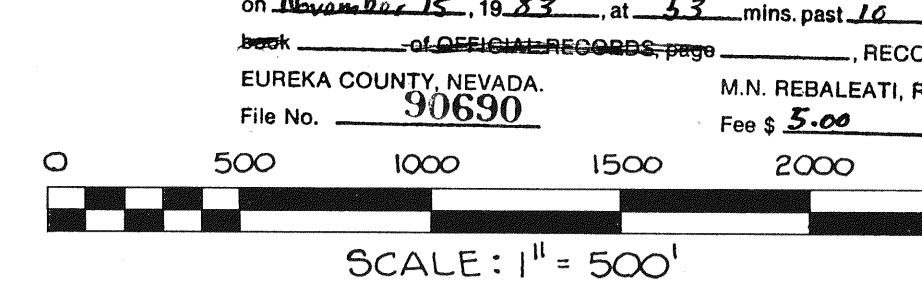
UNSURVEYED
 T.27N, R.48E,
 T.27N, R.49E,
 UNSURVEYED

UNSURVEYED
 T.27N, R.49E, M.D.M.
 T.26N, R.49E, M.D.M.
 SURVEYED

FILED AT THE REQUEST OF:
 DATE: _____
 TIME: _____
 FILE No.: _____
 EUREKA COUNTY RECORDER

- LEGEND**
- FOUND U.S. LAND MONUMENT #228 - 6"x6"x75" WOODEN POST WITH U.S. L.M. 228, IN 3" DIA. ROCK MOUND.
 - CLAIM POST - 4"x4"x4" WOODEN POST WITH ALUMINIUM TAGS SOUTH SIDE OF POST DESCRIBING CLAIM.
 - LOCATION MONUMENT - 4"x4"x4" WOODEN POST WITH LOCATION NUMBER

- NOTES**
1. THE CLAIMS AS THEY APPEAR ON THE GROUND AND AS THEY ARE DEPICTED HEREON HAVE NOT BEEN MOVED FROM THEIR ORIGINAL PLACE OF LOCATION AND THE FILING OF THIS AMENDED MAP IN NO MANNER IS CONSIDERED AS ACQUIRING NEW GROUND CLAIMED BY OTHERS.
 2. THE SECTION LINES SHOWN FOR T.26 & 27N, R.48 & 49E, M.D.M. ARE FROM B.L.M. NEVADA. PROTRACTOR DIAGRAM No. 160, DATED: JANUARY 1972.
 3. THIS AMENDED MAP AMENDS AND SUPPLEMENTS THOSE CERTAIN MAPS RECORDED IN THE RECORDS OF EUREKA COUNTY, NEVADA ON SEPTEMBER 1972 - FILE No. 56675; SEPTEMBER 24, 1973 - FILE No. 57732; SEPTEMBER 5, 1974 - FILE No. 59220; APRIL 28, 1975 - FILE No. 59913; JULY 3, 1975 - FILE No. 61849, 61853, 61854, 61855, 61856, 61857, 61858, 61859, 61860, 61861, 61862, 61863, 61864, 61865, 61866, 61867, 61868, 61869, 61870, 61871, 61872, 61873, 61874, 61875, 61876, 61877, 61878, 61879, 61880, 61881, 61882, 61883, 61884, 61885, 61886, 61887, 61888, 61889, 61890, 61891, 61892, 61893, 61894, 61895, 61896, 61897, 61898, 61899, 61900, 61901, 61902, 61903, 61904, 61905, 61906, 61907, 61908, 61909, 61910, 61911, 61912, 61913, 61914, 61915, 61916, 61917, 61918, 61919, 61920, 61921, 61922, 61923, 61924, 61925, 61926, 61927, 61928, 61929, 61930, 61931, 61932, 61933, 61934, 61935, 61936, 61937, 61938, 61939, 61940, 61941, 61942, 61943, 61944, 61945, 61946, 61947, 61948, 61949, 61950, 61951, 61952, 61953, 61954, 61955, 61956, 61957, 61958, 61959, 61960, 61961, 61962, 61963, 61964, 61965, 61966, 61967, 61968, 61969, 61970, 61971, 61972, 61973, 61974, 61975, 61976, 61977, 61978, 61979, 61980, 61981, 61982, 61983, 61984, 61985, 61986, 61987, 61988, 61989, 61990, 61991, 61992, 61993, 61994, 61995, 61996, 61997, 61998, 61999, 62000.



COMINCO AMERICAN INC. - BUCKHORN OPERATIONS

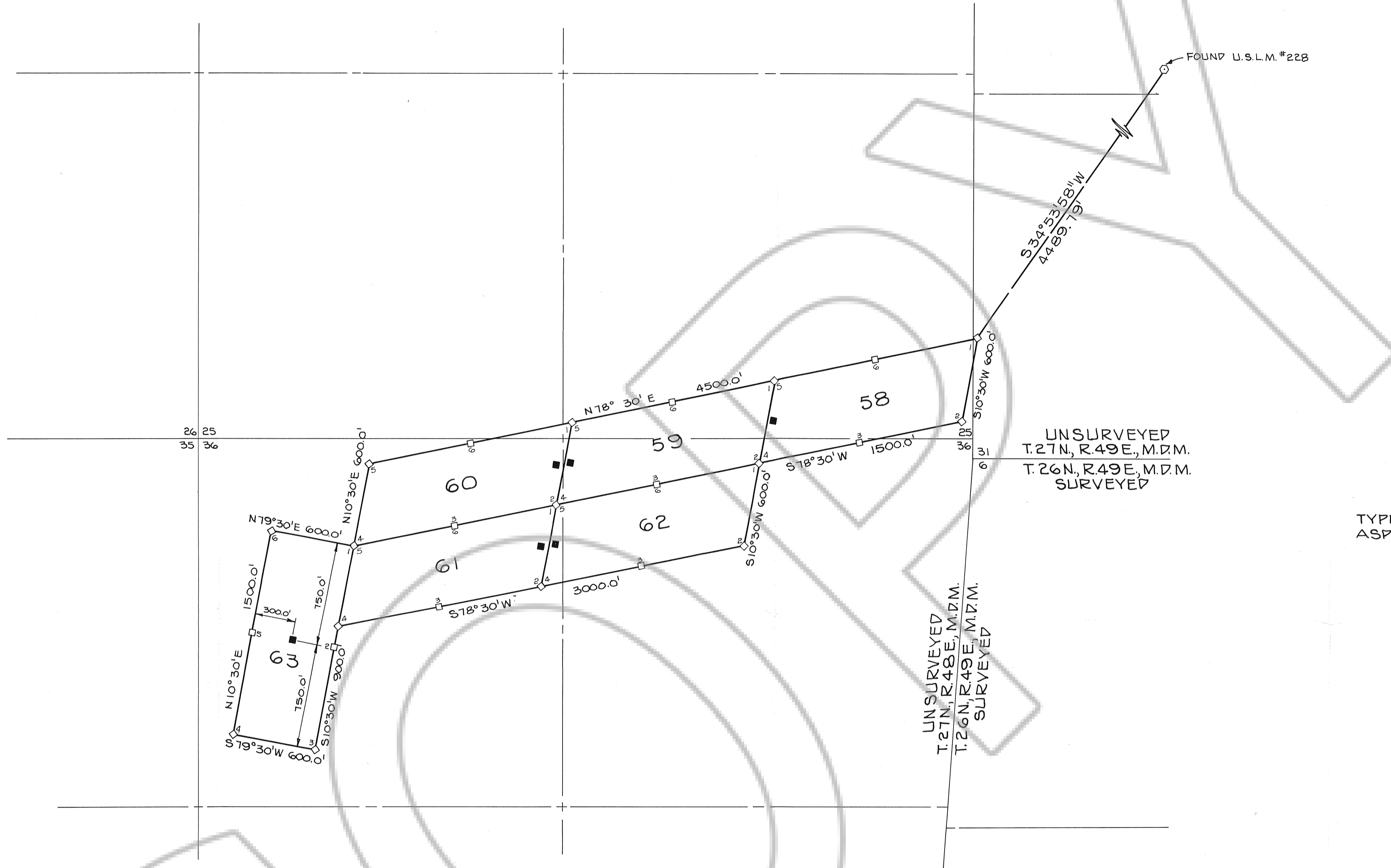
AMENDED MAP OF THE TUFA, & ASPEN 1-63 LODE CLAIM GROUP

SITUATED IN SECTIONS 30-32, T.27N, R.49E, M.D.M. - UNSURVEYED AND SECTIONS 5 & 6, T.26N, R.49E, M.D.M. - SURVEYED AND SECTIONS 24, 25 & 36, T.27N, R.48E, M.D.M. - UNSURVEYED

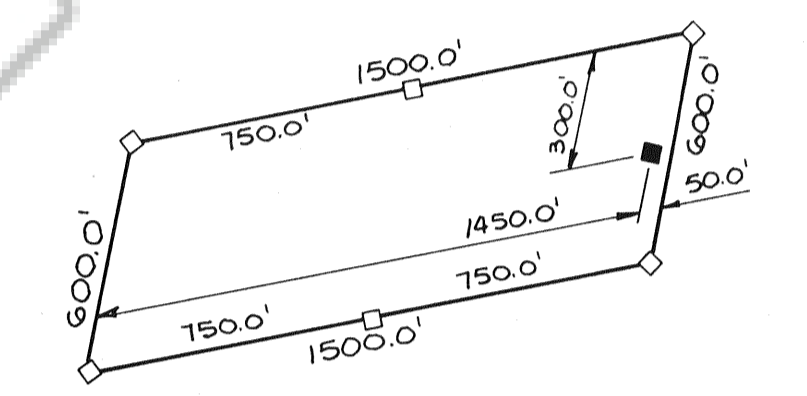
WORK PERFORMED BY
 COMINCO AMERICAN INC.
 E.15120 EUCLID AVENUE
 SPOKANE, WASHINGTON 99216

FOR
 OWNER: BUCKHORN MINES COMPANY,
 A NEVADA CORPORATION

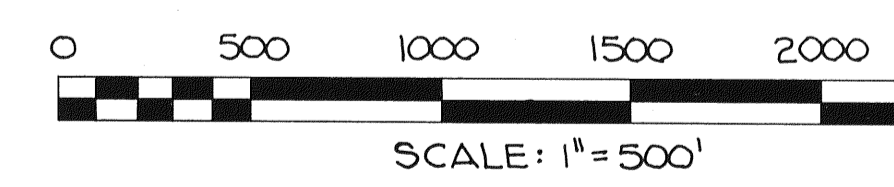
8308



T. 27N, R. 48 & 49E, M.D.M.
UNSURVEYED
BUCKHORN MINING DISTRICT
EUREKA COUNTY, NEVADA



TYPICAL CLAIM DIMENSIONING FOR
ASPEN 58-62 LODE CLAIMS. ASPEN
63 DIMENSIONED AS NOTED



COMINCO AMERICAN INC. - BUCKHORN OPERATIONS

**AMENDED MAP OF THE
TUFA, & ASPEN 1-63 LODE CLAIM GROUP**

SITUATED IN SECTIONS 30-32, T. 27N., R. 49E., M.D.M. - UNSURVEYED
AND SECTIONS 5 & 6, T. 26N., R. 49E., M.D.M. - SURVEYED
AND SECTIONS 24, 25 & 36, T. 27N., R. 48E., M.D.M. - UNSURVEYED

WORK PREPARED BY
COMINCO AMERICAN INC.
E. 15120 EUCLID AVENUE
SPOKANE, WASHINGTON 99216

FOR
OWNER: BUCKHORN MINES COMPANY,
A NEVADA CORPORATION