

DRAWING NUMBER  
SAFCO PRODUCTS • NEW HOPE, MINNESOTA  
REORDER BY PART NUMBER 6551

DRAWING NUMBER  
SAFCO PRODUCTS • NEW HOPE, MINNESOTA  
REORDER BY PART NUMBER 6551

DRAWING NUMBER  
91521  
SAFCO PRODUCTS • NEW HOPE, MINNESOTA  
REORDER BY PART NUMBER 6551

DRAWING NUMBER  
Bound - Gen Washington  
Robinson  
SAFCO PRODUCTS • NEW HOPE, MINNESOTA  
REORDER BY PART NUMBER 6551

OWNER'S CERTIFICATE

This is to certify that Boundy & Forman, Inc., who subscribed the note hereon, is the surveying firm employed by Wayne and Marybeth Robinson to prepare this map, which has been adopted by us as the true location of the area shown hereon.

*Wayne D. Robinson*  
Wayne Robinson  
*Marybeth Robinson*  
Marybeth Robinson

SURVEYOR'S CERTIFICATE

This document was prepared from information supplied by Wayne and Marybeth Robinson and the Eureka County Assessors Office and the undersigned assumes no responsibility for the existence or correctness of other information shown on or copied from any such prior documents.



*Richard W. Forman*  
Registered Land Surveyor  
Nevada License No. 2898

APPROVAL

At a regular meeting of the Eureka County Regional Planning Commission, State of Nevada, held the 21 day of July, 1983, the above map was duly and regularly approved.

*Robert Danek*  
Chairman, Eureka County  
Regional Planning Commission

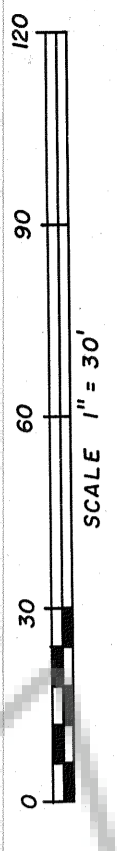
APPROVAL

At a regular meeting of the Eureka County Commissioners of Eureka County, State of Nevada, held the 3 day of December, 1983, the above map was duly and regularly approved.

*Charles A. W. Warrick*  
Chairman, Eureka County  
Commissioners

*Wayne D. Robinson*

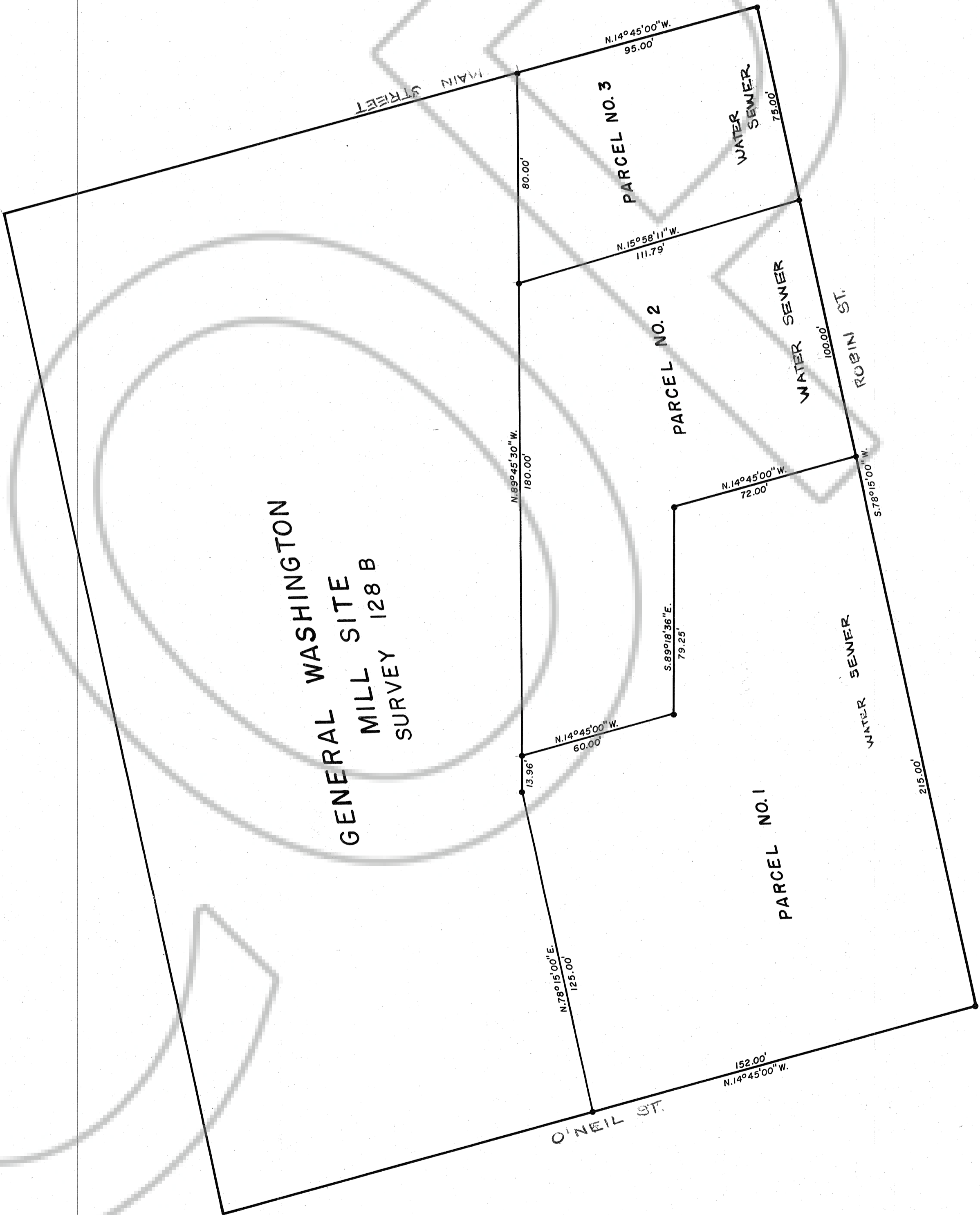
Filed  
at the Office of *Wayne D. Robinson*  
on December 14, 1983 at 11:45 a.m. in  
the 3 P.M. in  
the 11521 RECORDS OF  
EUREKA COUNTY, NEVADA  
MIN. REQUALITY RECORDS  
FILE NO. 91521  
FILE NO. 40600



Township 19N. Range 53E.

**PARCEL MAP**  
SHOWING LAND TO BE DIVIDED  
BY  
WAYNE & MARYBETH ROBINSON  
GENERAL WASHINGTON MILL SITE  
SURVEY 128 B  
EUREKA TOWNSITE  
EUREKA COUNTY, NEVADA

MAPPED  
BY  
BOUNDY & FORMAN, INC.  
ELY, NEVADA  
DECEMBER, 1981



GENERAL WASHINGTON  
MILL SITE  
SURVEY 128 B

MAIN STREET

O'NEIL ST.

ROBIN ST.

PARCEL NO. 1  
PARCEL NO. 2  
PARCEL NO. 3  
WATER SEWER  
WATER SEWER  
WATER SEWER