

TRUE NORTH

SCALE: 1" = 500'

NOTE:

- - INDICATES 4" DIA. x 5' PVC MONUMENT AT ALL CORNERS AND LOCATIONS AS SHOWN
- - INDICATES 4" x 4" x 4-1/2' WOOD MONUMENT AT ALL CORNERS AS SHOWN
- ⊗ - INDICATES 4" DIA. x 5' PVC LOCATION MONUMENT LOCATED 10' FROM END LINE OF CLAIM
- - INDICATES PRIOR CLAIM LINE
- ⊕ ⊙ - INDICATES SECTION CORNER

SECTION LINES ARE PROJECTED

LOCATION DATES:

DECEMBER 3, 1983	340 THROUGH 349
DECEMBER 4, 1983	305 THROUGH 309
DECEMBER 5, 1983	383 THROUGH 392
DECEMBER 13, 1983	440 A THROUGH 455
DECEMBER 14, 1983	456 THROUGH 469
DECEMBER 15, 1983	526 THROUGH 535
DECEMBER 17, 1983	670 THROUGH 699

LOCATED IN SECTIONS 24, 25, 35, T. 22 N., R. 49 E., & SECTIONS 19, 29, 30, 31, 32, T. 22 N., R. 50 E.

Filed AT THE REQUEST OF **ATLAS CORP.**  
 on January 19, 1984 at 40 mins. past 11 A. M. in  
 the original RECORDS OF RECORDS OF  
 EUREKA COUNTY, NEVADA. M.N. REBALEATI, Recorder  
 File No. 92400 Fee \$ 1500.00

**SHEET 2 OF 4 SHEETS**

**MAP OF THE**  
**JASPER LODGE MINING CLAIMS**  
**EUREKA COUNTY, NEVADA**

LOCATED BY RICHARD D. INBERG  
 AGENT FOR ATLAS CORPORATION  
 P.O. BOX 1207  
 MOAB, UTAH 84532



R. 49 E.

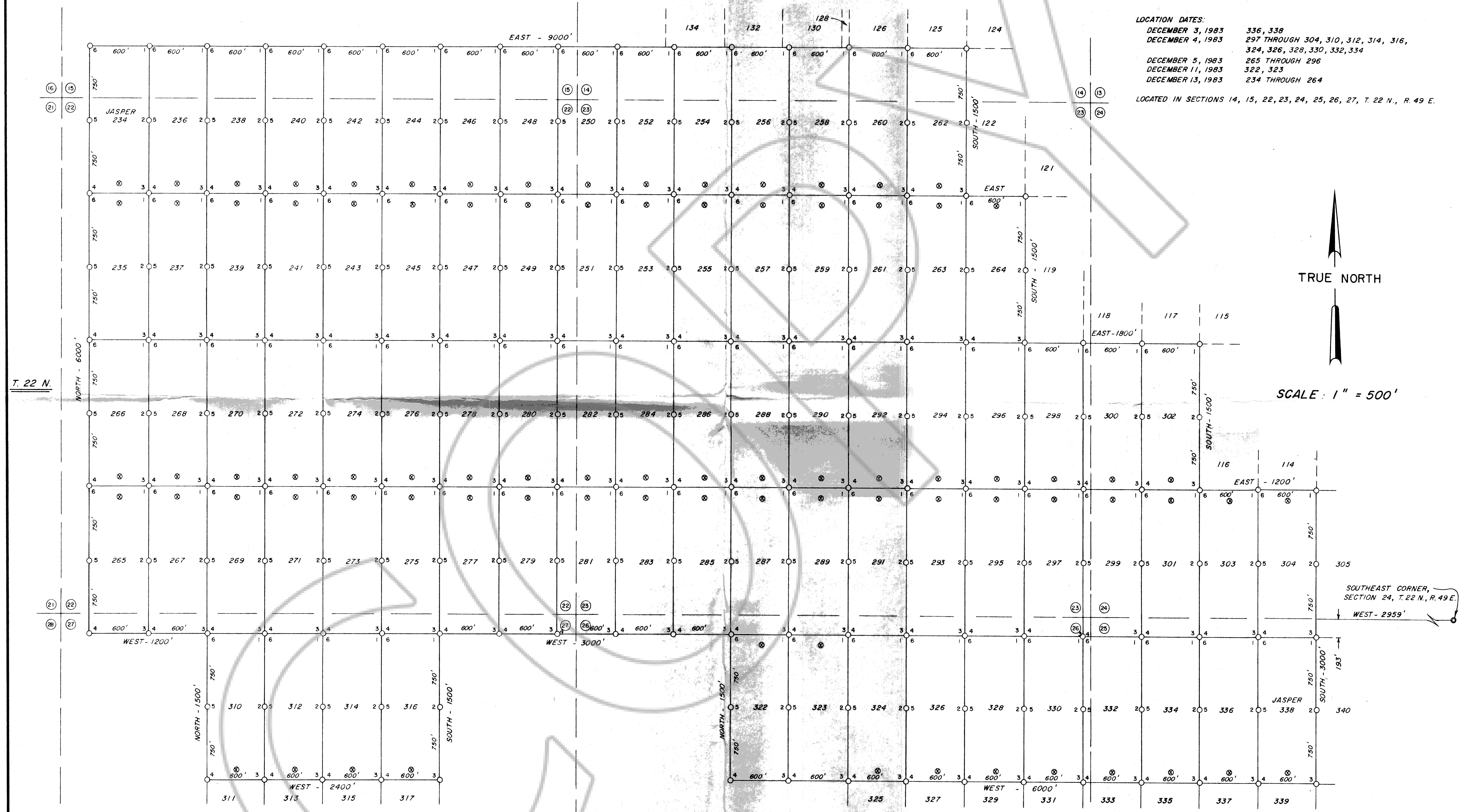
- NOTE:
- - INDICATES 4" DIA. x 5' PVC MONUMENT AT ALL CORNERS AND LOCATIONS AS SHOWN
  - ⊗ - INDICATES 4" DIA. x 5' PVC LOCATION MONUMENT LOCATED 10' FROM END LINE OF CLAIM
  - ⑬ ⑭ - INDICATES SECTION CORNER
  - ⑮ ⑯ - INDICATES PRIOR CLAIM LINE

SECTION LINES ARE PROJECTED

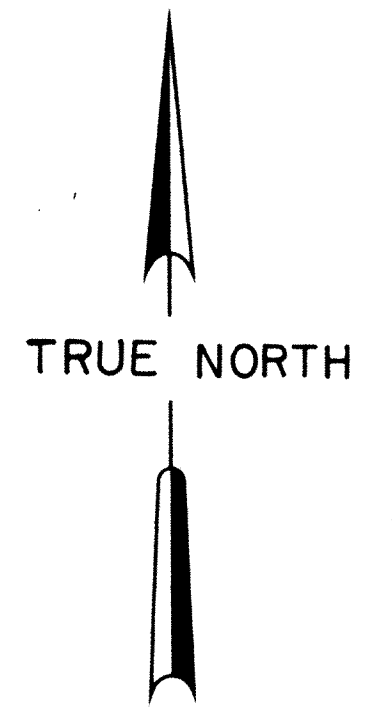
LOCATION DATES:

DECEMBER 3, 1983	336, 338
DECEMBER 4, 1983	297 THROUGH 304, 310, 312, 314, 316, 324, 326, 328, 330, 332, 334
DECEMBER 5, 1983	265 THROUGH 296
DECEMBER 11, 1983	322, 323
DECEMBER 13, 1983	234 THROUGH 264

LOCATED IN SECTIONS 14, 15, 22, 23, 24, 25, 26, 27, T. 22 N., R. 49 E.



SCALE: 1" = 500'



SOUTHEAST CORNER,  
SECTION 24, T. 22 N., R. 49 E.  
WEST - 2959'

SHEET 3 OF 4 SHEETS

MAP OF THE  
JASPER LODGE MINING CLAIMS  
EUREKA COUNTY, NEVADA

LOCATED BY RICHARD D. INBERG  
AGENT FOR ATLAS CORPORATION  
P. O. BOX 1207  
MOAB, UTAH 84532

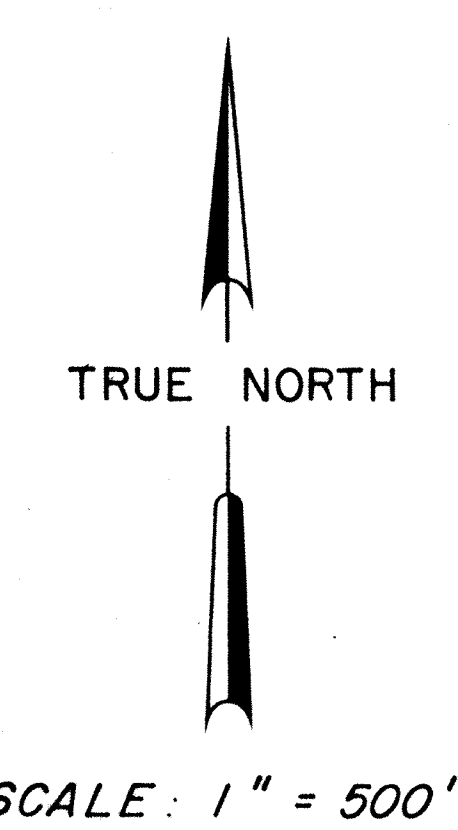
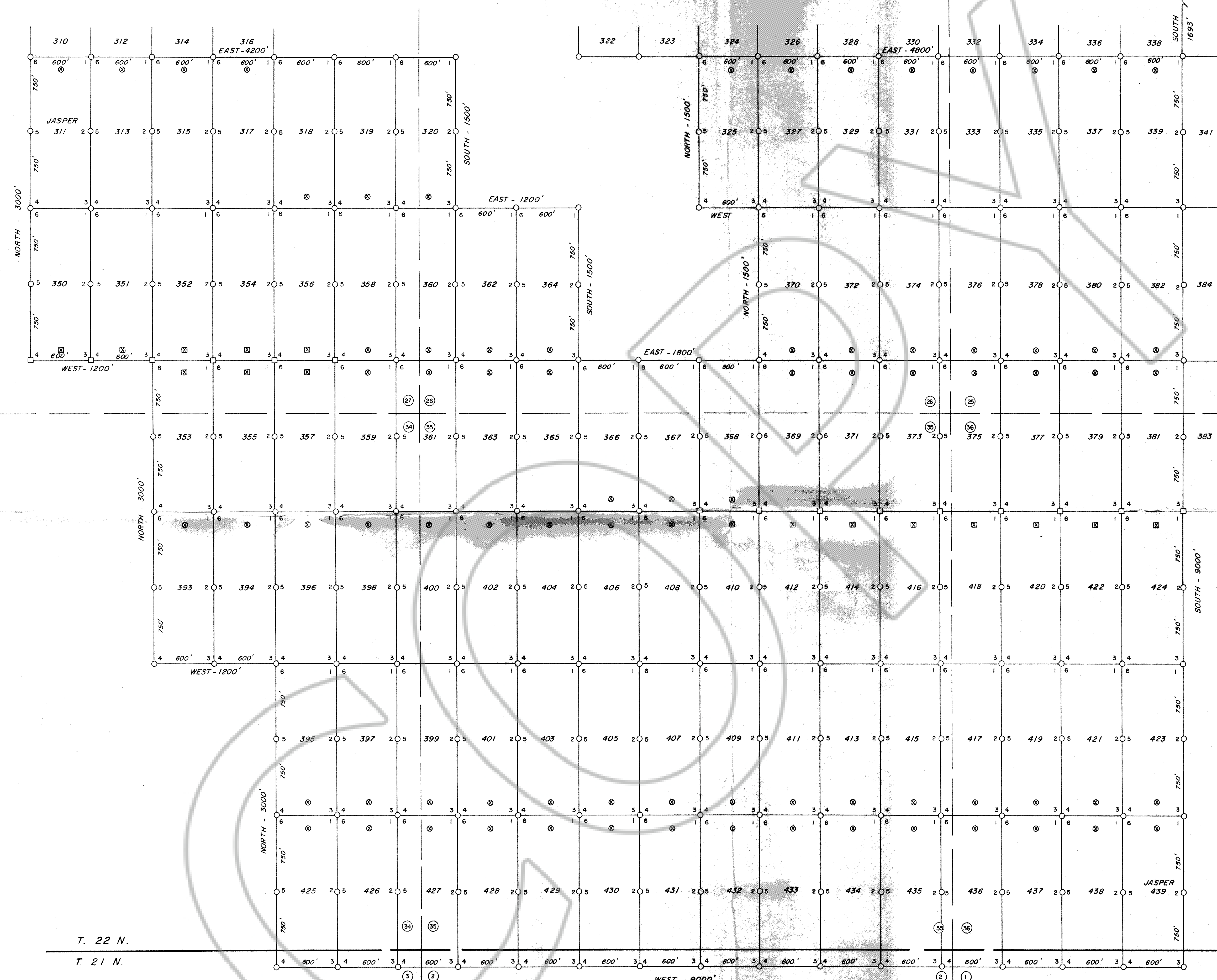
Filed AT THE REQUEST OF **ATLAS CORP.**  
on Jan. 19, 1984 at 40 mins. past 11 A.M.  
EUREKA COUNTY, NEVADA. RECORDS OF  
M.N. REBALEATI, Recorder  
File No. 92400 Fee \$ 1,275.00



R. 49 E.

WEST - 2959'

SOUTHEAST CORNER,  
SECTION 24, T. 22 N., R. 49 E.



- NOTE:
- - INDICATES 4" DIA. x 5' PVC MONUMENT AT ALL CORNERS AND LOCATIONS AS SHOWN
  - - INDICATES 4" x 4" x 4-1/2' WOOD MONUMENT AT ALL CORNERS AND LOCATIONS AS SHOWN
  - ⊗ - INDICATES 4" DIA. x 5' PVC LOCATION MONUMENT LOCATED 10' FROM END LINE OF CLAIM
  - ⊠ - INDICATES 4" x 4" x 4-1/2' WOOD LOCATION MONUMENT LOCATED 10' FROM END LINE OF CLAIM
  - ⊕ - INDICATES SECTION CORNER

SECTION LINES ARE PROJECTED

LOCATION DATES:

DECEMBER 3, 1983	337, 339
DECEMBER 4, 1983	311, 313, 315, 317, 325, 327, 329, 331, 333, 335
DECEMBER 5, 1983	377 THROUGH 382
DECEMBER 6, 1983	350 THROUGH 365 368 THROUGH 376 410, 412, 414, 416, 418, 420, 422, 424
DECEMBER 7, 1983	366, 367, 393, 394, 396, 398, 400, 402, 404, 406, 408
DECEMBER 8, 1983	395, 397, 399, 401, 403, 405, 407, 409, 411, 413, 415, 417, 419, 421, 423, 425 THROUGH 439
DECEMBER 10, 1983	316, 319, 320

LOCATED IN SECTIONS 25, 26, 27, 34, 35, 36, T. 22 N., R. 49 E., & SECTIONS 1, 2, 3, T. 21 N., R. 49 E.

Filed  
AT THE REQUEST OF  
on Jan 19, 1984, at 40 mins. past 11 A.M. in  
EUREKA COUNTY, NEVADA. RECORDS OF  
M.N. REBALEATI, Recorder  
File No. 92400 Fee \$ 1,710.00

**ATLAS CORP.**

T. 22 N.  
T. 21 N.

**SHEET 4 OF 4 SHEETS**

**MAP OF THE  
JASPER LODGE MINING CLAIMS  
EUREKA COUNTY, NEVADA**

LOCATED BY RICHARD D. INBERG  
AGENT FOR ATLAS CORPORATION  
P.O. BOX 1207  
MOAB, UTAH 84532

JOB NO. C-24863-83 12/27/83 DRAWN R.S. FULLER