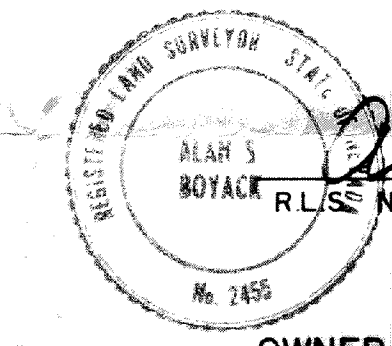


LAND SURVEYOR'S CERTIFICATE

I, ALAN S. BOYACK, DO HEREBY CERTIFY THAT THIS IS A TRUE AND ACCURATE MAP OF THE LAND SURVEYED UNDER MY SUPERVISION AND DIRECTION ON THE 11 DAY OF DEC, 1983, AT THE INSTANCE OF NEWMONT EXPLORATION LTD., AND THAT THE MONUMENTS ARE OF THE CHARACTER AND OCCUPY THE POSITIONS INDICATED HEREON AND ARE SUFFICIENT TO ENABLE THIS SURVEY TO BE RETRACED.



Alan S. Boyack
 ALAN S. BOYACK
 R.L.S. NO. 2455

OWNER AND LOCATOR

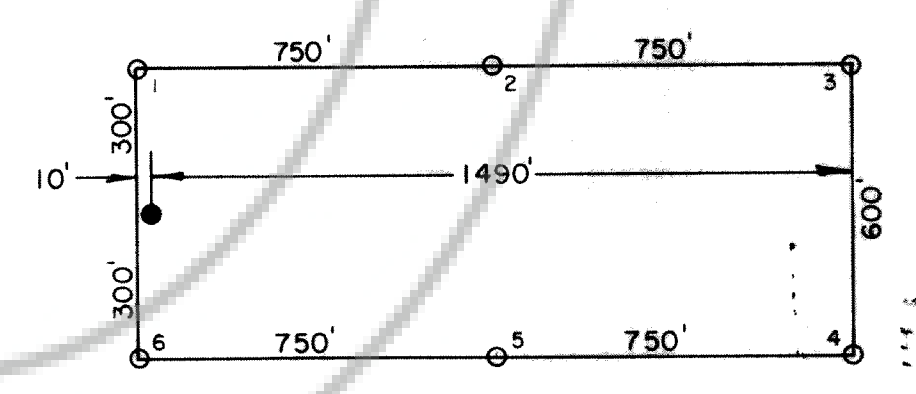
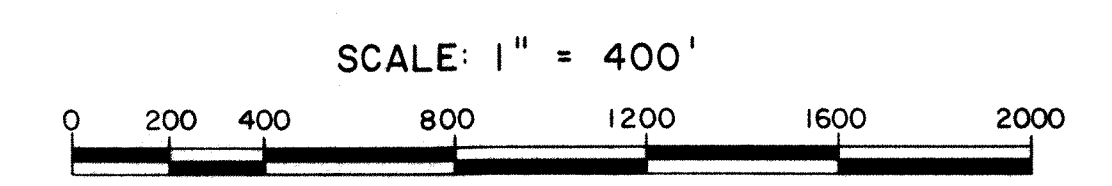
NEWMONT EXPLORATION LTD.
 P.O. BOX 368
 ELKO, NEVADA 89801

LOCATION DATES

T.S. CLAIMS 181 - 198 WERE LOCATED ON THE 23rd DAY OF NOVEMBER, 1983
 T.S. CLAIMS 77-94 WERE LOCATED ON THE 10th DAY OF NOVEMBER, 1983

LEGEND

- ◊ = FOUND SECTION CORNER
- = 4" DIA. P.V.C. PIPE POST, CLAIM CORNER
- = 4" DIA. P.V.C. PIPE POST, LOCATION MONUMENT



TYPICAL T.S. CLAIM

Filed AT THE REQUEST OF Boyack Surveying
 on January 20, 1984 at 11 mins. past 2 P. M. in
 book _____ of EUREKA COUNTY, NEVADA, page _____, RECORDS OF
 EUREKA COUNTY, NEVADA. M.N. REBALEATI, Recorder
 File No. 92533 Fee \$ 540.00

MAP OF LODE CLAIMS
T.S. NOS 77-94 & 181-198
 FOR
 NEWMONT EXPLORATION LTD.
 IN
 AN UNKNOWN MINING DISTRICT
 SECTION 32, T 34N-R50E, MDB&M
 EUREKA COUNTY, NEVADA

BOYACK SURVEYING ELKO, NEVADA 83065 *AM*