

BR LODE CLAIM GROUP

3-20, 22, 24-43, 45, 49, 52, 54-94, 99-120

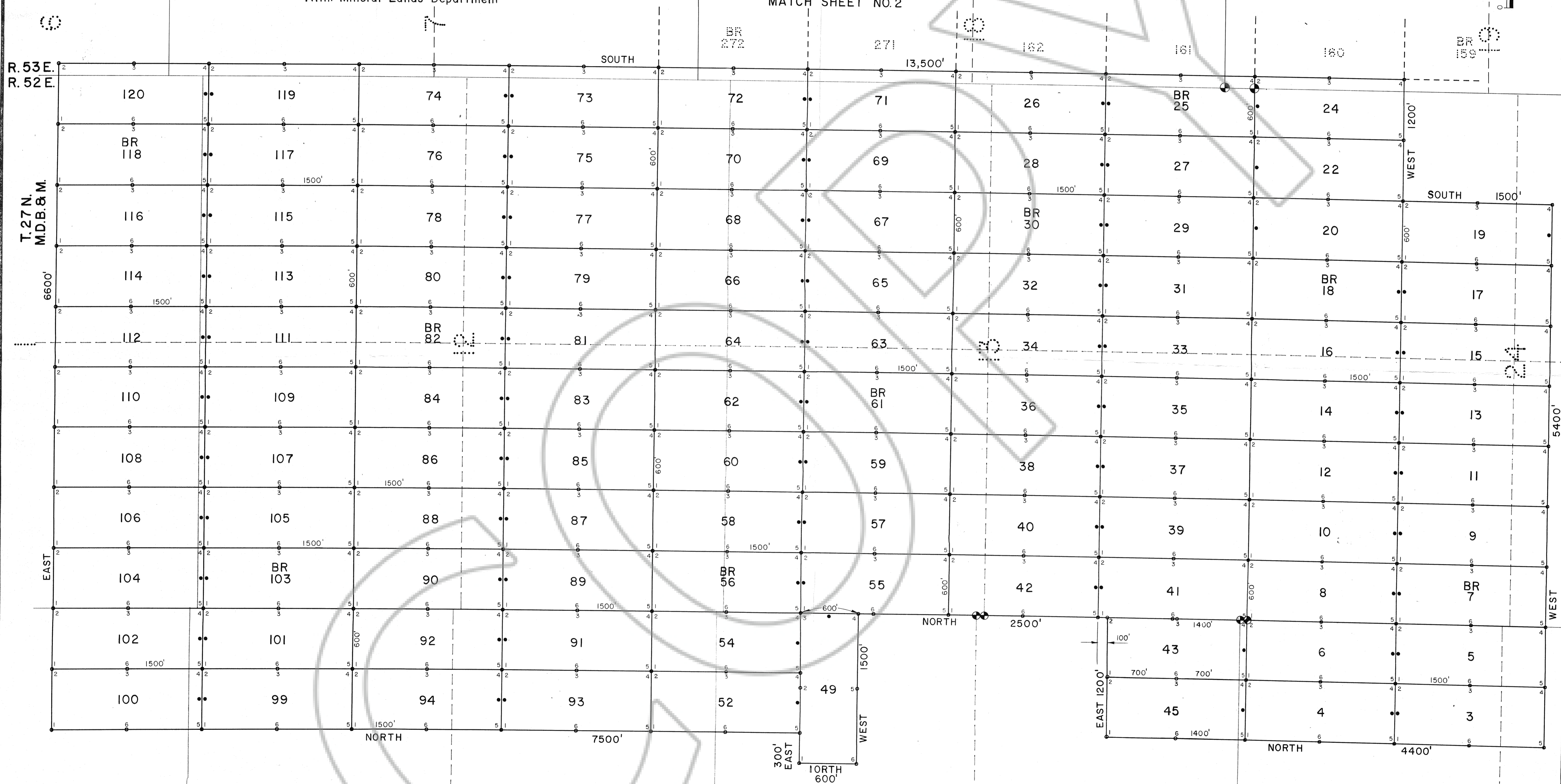
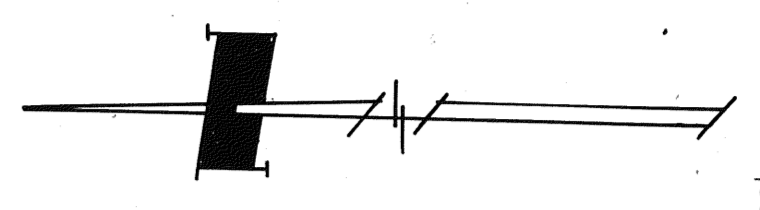
127-192, 194-272

Located in Sections 1, 2, 11, 12, 13, 14, 23 and 24, T. 27 N., R. 52 E., M.D.B. & M., and Sections 6, 7, 8, 9, 10, 15, 16, 17, 18, 19, 20, 21, 22, 29 and 30, T. 27 N., R. 53 E., M.D.B. & M., Eureka and Elko Counties, Nevada

Located October 24, Thru November 29, 1983 by:
ATLANTIC RICHFIELD COMPANY, Through its Division
ANACONDA MINERALS COMPANY
 555 17th Street
 Denver, Colorado 80202
 Attn: Mineral Lands Department

MATCH SHEET NO. 2

- LEGEND**
- Found 1924 GLO Brass Cap
 - 4" Diameter x 4 1/2" post with Location Certificate and marked tag attached. Set 10' from end line unless otherwise noted.
 - 4" Diameter x 4 1/2" post with marked tag attached at each corner and side center position.
- NOTE: All claims are 600' x 1500' unless otherwise noted.



Filed AT THE REQUEST OF **ATLANTIC RICHFIELD**
 on Jan 23, 1984, at 42 mins. past 1 P.M.
 EUREKA COUNTY, NEVADA. RECORDS OF
 M.N. REBALEATI, Recorder
 File No. 92706 Fee \$ 4.75

ARMSTRONG & ASSOCIATES, INC.

865 Road Avenue
 Grand Junction, Colorado 81501
 (303) 245-3861

Architects
 Engineers
 Planners
 Surveyors
 Soil Testing
 Material Testing
 U.S. Mineral Surveyors
 Geotechnical Engineers

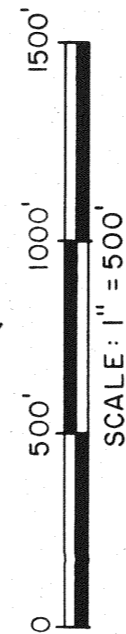
BR LODE CLAIMS
 ATLANTIC RICHFIELD COMPANY
 c/o ANACONDA MINERALS CO.

Project No: 834257
 Date: DEC. 1983
 Revisions:

Drawn: RCB
 Checked: [Signature]
 Approved: [Signature]

BR LODE CLAIM GROUP

Sheet 2 of 3



MATCH SHEET NO. 3

ELKO CO.
EUREKA CO.

LEGEND

- Found 1924 GLO Brass Cap
- 4" Diameter x 4 1/2' post with Location Certificate and marked tag attached. Set 10' from end line unless otherwise noted.
- 4" Diameter x 4 1/2' post with marked tag attached at each corner and side center position.

NOTE: All claims are 600' x 1500' unless otherwise noted.

Filed AT THE REQUEST OF ATLANTIC RICHFIELD
on Jan 23, 19 84, at 42 mins past 1 P.M.
RECORDS OF
EUREKA COUNTY, NEVADA. M.N. REBALEATI, Recorder
File No. 92706 Fee \$ 930.00

ARMSTRONG & ASSOCIATES, INC.
681 Road Avenue
Grand Junction, Colorado 81501
(303) 245-3861

Architects
Engineers
Planners
Surveyors
Soil Testing
Material Testing
U.S. Mineral Surveyors
Geotechnical Engineers

BR LODE CLAIMS
ATLANTIC RICHFIELD COMPANY
c/o ANACONDA MINERALS CO.

Project No: 834257
Date: DEC. 1983
Revisions:

Drawn:
Checked:
Approved:

