

# BR LODE CLAIM GROUP 25A-42A, 47, 49A, 52A, 54A-94A, 99A-120A

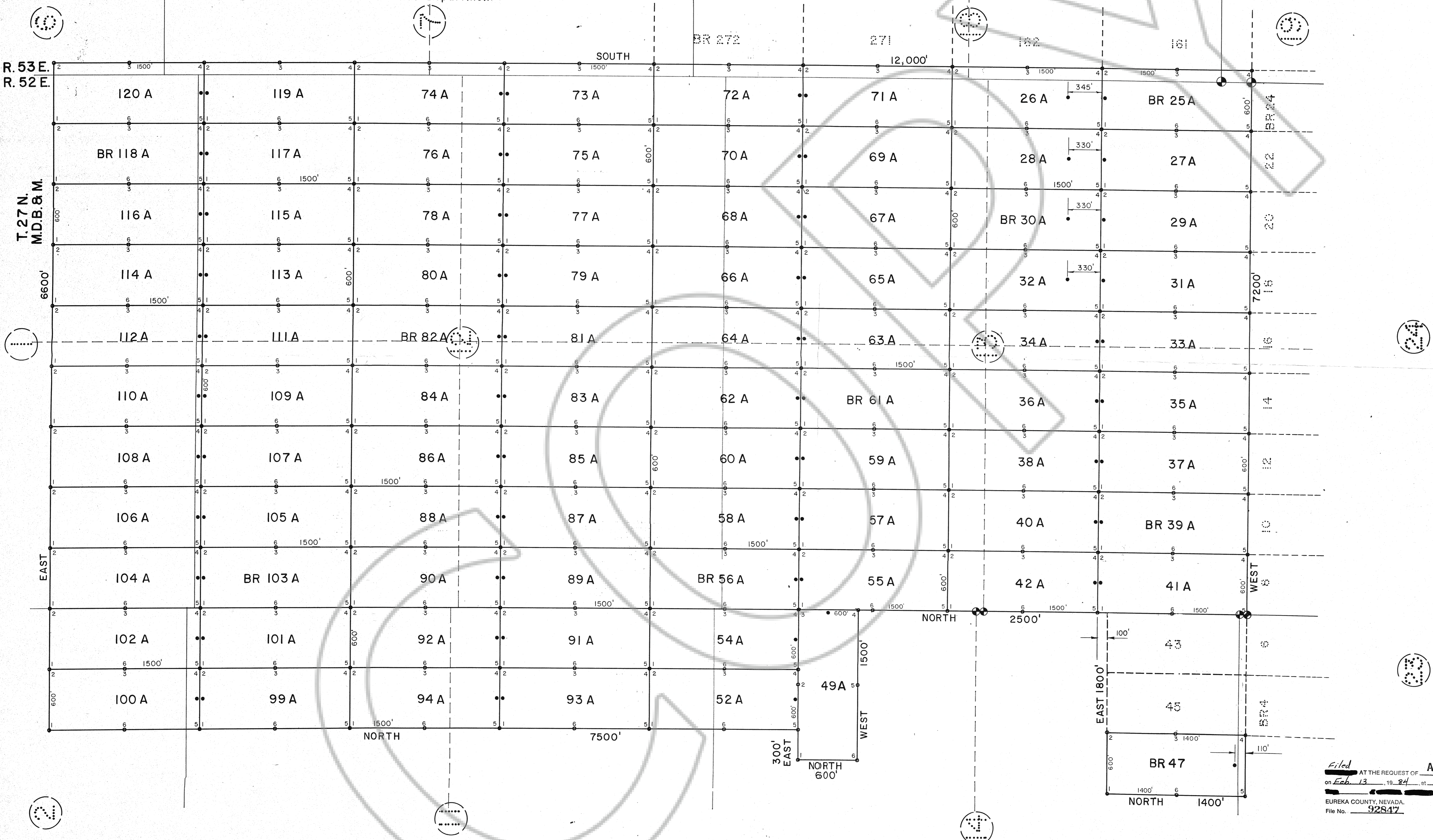
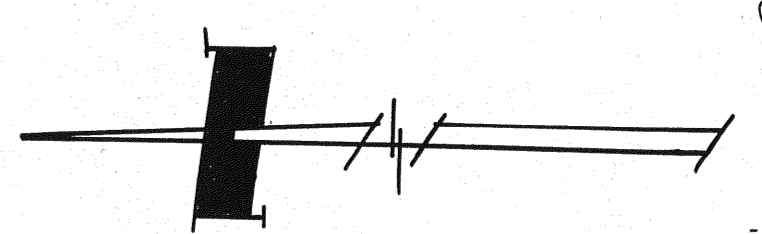
Located in Sections 1, 2, 11, 12, 13, 14, and 23 T. 27 N., R. 52 E. and  
6, 7, 18, and 19 T. 27 N., R. 53 E., M.D.B. & M., Eureka County, Nevada

Located January 28, 1984 By:  
ATLANTIC RICHFIELD COMPANY, Through its Division  
ANACONDA MINERALS COMPANY  
555 17th Street  
Denver, Colorado 80202  
Attn: Mineral Lands Department

**LEGEND**

- Found 1924 G.L.O. Brass Cap
- 4" Diameter x 4 1/2" post with Location Certificate and marked tag attached Set 10' from end line unless otherwise noted.
- 4" Diameter x 4 1/2" post with marked tag attached at each corner and side center position.

NOTE: All claims are 600' x 1500' unless otherwise noted.



Filed AT THE REQUEST OF ATLANTIC RICHFIELD  
on Feb. 13, 1984, at 5:59 mins. past 11 A.M.  
RECORDS OF  
EUREKA COUNTY, NEVADA. M.N. REBALEATI, Recorder  
File No. 92847 Fee \$ 4260

**ARMSTRONG & ASSOCIATES, INC.**

Architects  
Engineers  
Planners  
Surveyors  
Soil Testing  
Material Testing  
U.S. Mineral Surveyors  
Geotechnical Engineers

BR LODE CLAIMS  
ATLANTIC RICHFIELD COMPANY  
c/o ANACONDA MINERALS CO.

Project No: 834257  
Date: JAN 28, 1984  
Revisions:  
Drawn: ROB  
Checked:  
Approved:

EUREKA CO.  
NEVADA