

93918

AFFIDAVIT OF LABOR

For Year Ending September 1, 1984

To Whom It May Concern:

VEK/Andrus Associates, owner of the following Lode Mining Claims in Sec. 12
T 35N, R 49E,

ROD # 7-24, NMC # 273084-273101
Located May 18 & 19, 1983
Recorded in Eureka County Records, Book 111, Pages 269-286

has had the following work done on and for the benefit of these 18 contiguous
claims in May and June 1984.

One mile V L F-E M and Magnetic geophysical surveylines having a
value of about \$2000 plus geologic mapping at a cost of about
\$600; having expended well over the \$1800 required. An attached
sketch shows where the geophysical lines were run.

RESULTS: Altho much of the area is covered with transported material several
structures were mapped and the geophysical results correlated reasonably well
with the geology. Much more geophysical work will be required to give
necessary details to develop a better geologic picture.

By

Victor E. Kral
Victor E. Kral

Date:

7/17/84

Witness

Fred L. Lerner

Witness

Nancy L. Martorelli

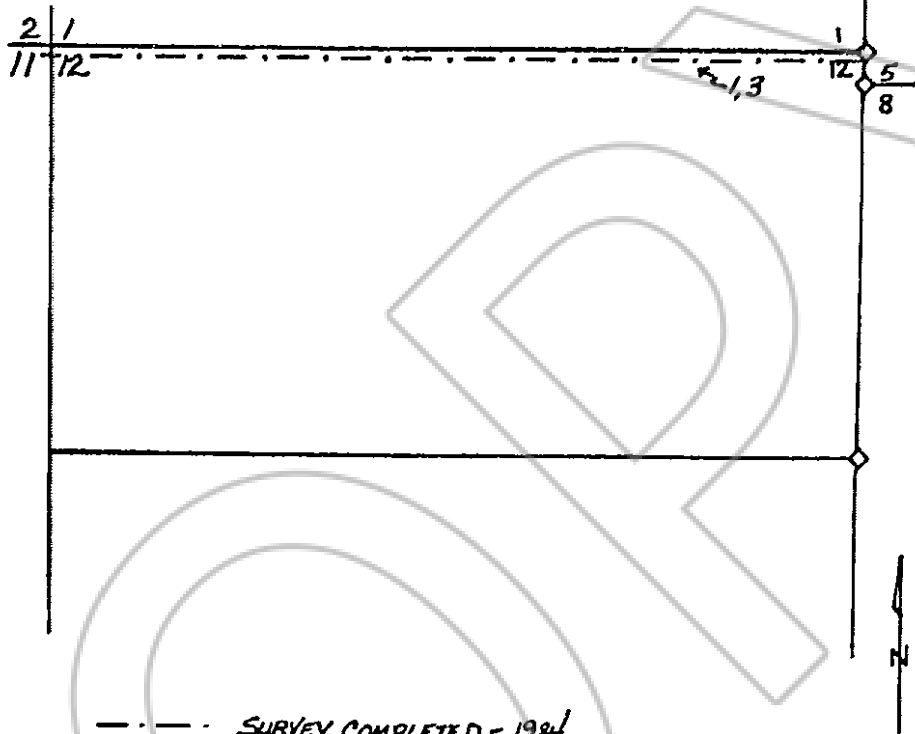
BOOK 124 PAGE 228

GEOPHYSICS

ROD CLAIMS #7-24

LOCATED: MAY 18 & 19, 1983

Sec. 12, T.35N, R.49E



--- SURVEY COMPLETED - 1984

◇ LOCATED SECTION OR 1/4 COR.

1- MAGNETICS

2- RADIOMETRICS

3- VLF-EM

4- IP

SCALE

1" = 1000'

PERSONNEL & OTHER DATA

VEK/Andrus Associates personnel responsible for acquisition of data, interpretation, geologic mapping and exploration planning are listed below with their qualifications.

Gerald B. Hartley, Jr. obtained his B.S. degree in Mining Engineering from the Mackay School of Mines, University of Nevada, in 1943, and has over 50 years experience in the mineral industry. His specialization is the evaluation and operation of small mines. He is a Registered Mining Engineer and Land Surveyor in Nevada, # 535.

Victor E. Kral obtained his B.S. degree in Mining Engineering from the Mackay School of Mines, in 1938 and his Professional Degree from the same institution in 1951. Nearly all his 40 plus years experience has been in mineral exploration. He is a Registered Mining Engineer and Land Surveyor in Nevada # 398, and a Registered Geologist in Arizona and Maine.

Thomas L. Lawler obtained his B.S. degree with a Geology Major from Wisconsin State, Superior, in 1960 and his M.S. in Geology-Geophysics from Michigan State, East Lansing, in 1962. He has 25 years experience in mineral exploration involving geophysics and geochemistry. Approximately his last 10 years had been in Western exploration for gold deposits. Lawler does the final geophysical interpretation.

Ralph J. Roberts obtained his B.S. and M.S. degrees in geology from the University of Washington in 1935 and 1937, respectively, and his PhD from Yale University in 1949. He worked for 45 years with the U.S. Geological Survey in Alaska, the United States, Central America and Saudi Arabia, partly in regional stratigraphic and structural studies designed to determine the localization of ore deposits, and partly in the study of the genesis of ore deposits. He was involved in regional studies which led to the discoveries of major ore deposits in the Carlin area, at Battle Mountain, and in Saudi Arabia. He is a registered geologist in California. #2107. Roberts does most of the geologic mapping.

Baltazar L. Garcia obtained his B.S. degree in Mining Engineering from the University of Arizona, in 1981. His experience has been in mineral exploration and evaluation of precious metal properties, while employed by various consulting firms. He is involved in geophysical surveys, geochemical sampling and general exploration activities.

BOOK 124 PAGE 230

PERSONNEL & OTHER DATA CONT.

Barbara J. Howie received her B.S. in Geology from Ohio University in 1979. Her experience has been in mineral exploration, evaluation of precious metal properties, remote sensing and geophysics. She is principally involved in performing various geophysical surveys, interpretation of data, and general coordination of the results.

Richard F. Seidl, Mining Geologist, has been with VEK/Andrus Associates for about a year and a half. He received his Bachelor's Degree in Geology, with a minor in Chemistry from Case Western Reserve University in 1976. He worked for several exploration firms, and precious metal mines, and a large barite mine before obtaining his Master's Degree from Mackay School of Mines in 1982. He performs geophysical surveys, geologic mapping, and general exploration activities.

Much of the 1983-'84 year (ending September 1, 1984) assessment work involved geophysical surveys; some was geologic mapping. For those interested, average line-mile costs published by the Society of Exploration Geophysicists in the "Leading Edge". August 1983 issue, are given:

Induced Polarization	\$2,421 / line-mile
Magnetic	1,018 / line-mile
Radiometric	900 / line-mile
VLF-EM	1,065 / line-mile

These costs include both data acquisition and interpretation; our costs were held well below these.

RECORDED AT REQUEST OF
Victor E. Kral
BOOK 124 PAGE 228

84 JUL 20 P 1: 27

OFFICIAL RECORDS
EUREKA COUNTY, NEVADA
H.M. REBALEATI, RECORDER
FILE NO. 93918
REF. S 23-50

BOOK 124 PAGE 231