

6

5

4

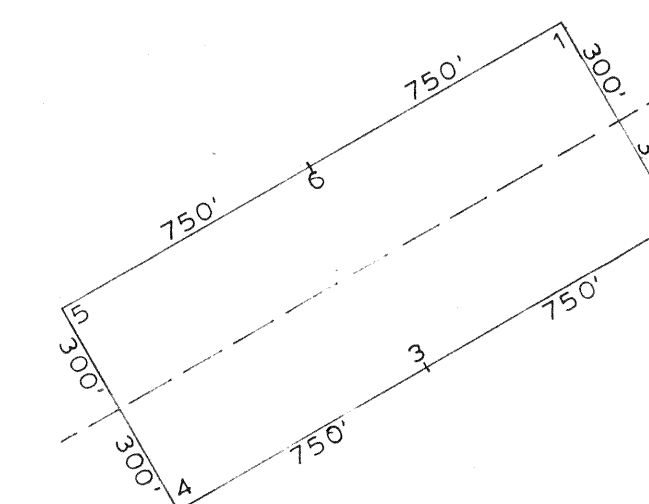
7

9

18

17

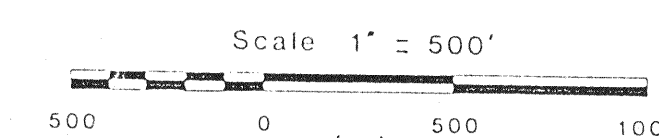
16



Discovery monument 10 feet from end center

Corner 2 of claim no. 44 is located as follows: beginning at the SE corner of section 34, T22N, R50E, Eureka County, Nevada, proceed approximately 9200' along a bearing N7°14'31"W, thence approximately 4500' along a bearing N40°E, thence approximately 16,500' along a bearing N50°W, thence approximately 970' along a bearing S30°E to said corner no. 2.

See description (above) for bearings, distances



Filed AT THE REQUEST OF Mapco Minerals Corp.
on July 23, 1984, at 01 mins. past 9 AM. M.
EUREKA COUNTY, NEVADA. RECORDS OF
File No. 94024 M.N. REBALEATI, Recorder
Fee \$ 660.00

Located June 18 (#1-28) and
June 29 (#29-44), 1984 by:
MAPCO Minerals Corporation
1667 Cole Blvd. Suite 150
Golden, CO 80401

Drafting by M. Montecinos, J. DeJournett

CRAM LODE CLAIM GROUP
T22N, R50E, unsurveyed sec. 5-9, 17
Eureka County, Nevada