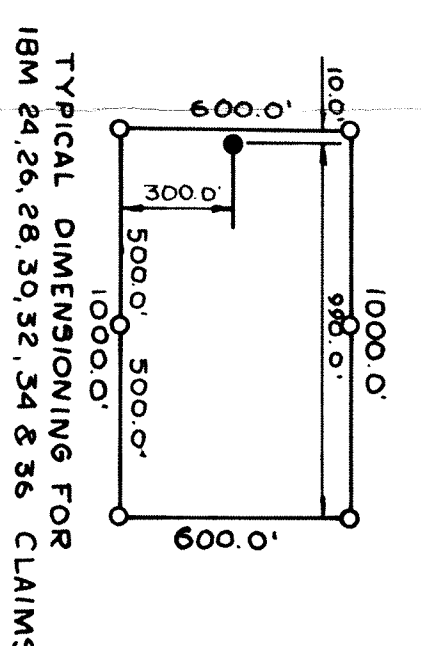
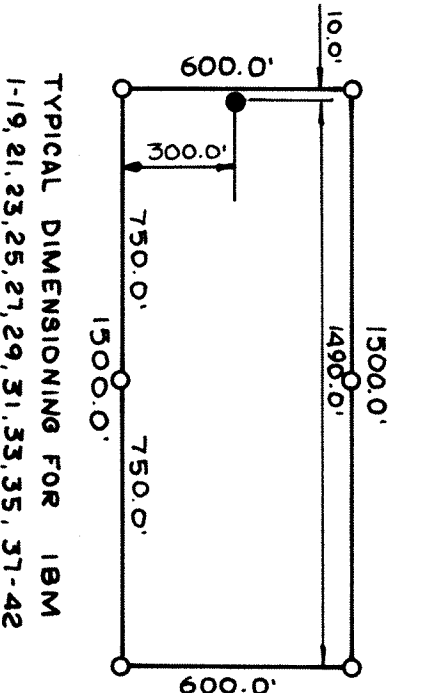
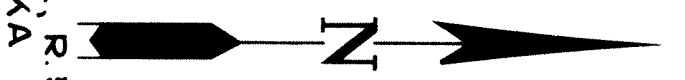


T. 31 N., R. 51 E. M.D.M.  
EUREKA COUNTY

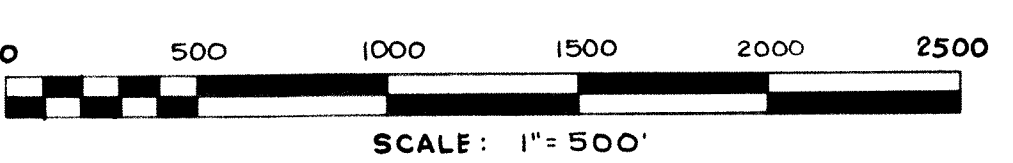


TYPICAL DIMENSIONING FOR IBM  
1-19, 21, 23-35, 37-42 CLAIMS

TYPICAL DIMENSIONING FOR  
IBM 24, 26, 28, 30, 32, 34 & 36 CLAIMS

EXCEPT IBM 20, 22, 48 & 49 CLAIMS  
AS NOTED

FILE NO. **94139**  
Filed at the Office of the County Engineer  
on **7/22/1984**, at **11:14 AM**,  
Records of Eureka County, Nevada,  
Page 9 of 10, 50-74 CLAIMS



**MAP OF**  
**IBM 1-42, 44-74 MINING LODE CLAIMS**  
SITUATED IN T. 31 N., R. 51 E. M.D.M.  
FOR  
**THOMAS E. & FRANCES BILBAO**  
BOX 537  
ELKO, NEVADA 89801

LOCATION DATES	CLAIM NUMBERS
JULY 20, 1984	1-19, 21, 23-36
JULY 23, 1984	37-42, 50-74
JULY 24, 1984	44-49
JULY 27, 1984	20 & 22

**LEGEND**

- ◇ FOUND SECTION CORNER - MARKED ROCK
- CLAIM POST - 4" DIA. x 5'-0" P.V.C. PIPE
- CLAIM POST MARKED FOR THE CORNER
- LOCATION MONUMENT - 4" DIA. x 5'-0" P.V.C. PIPE WITH LOCATION NOTICE

**NOTES**

1. THIS SURVEY WAS BASED ON THE OFFICIAL GENERAL LAND OFFICE PLAT ON T. 31 N., R. 51 E., M.D.M. APPROVED MARCH 15, 1905.
2. THERE ARE 73 IBM LODE CLAIMS IN THIS CLAIM GROUP. IBM 43 IS NOT LOCATED.

MONUMENTATION COMPLETED BY: JULY 27, 1984

FILED AT THE REQUEST OF:  
CHILTON ENGINEERING  
DATE: August 9, 1984  
TIME: 11:14 A.M.  
FILE No.: 94139  
M. N. Rebaletti  
EUREKA COUNTY RECORDER

NO.	BY DATE	DESCRIPTION	CHK'D	APP'D
REVISIONS				

**CHILTON ENGINEERING** CHARTERED  
ELKO LAS VEGAS RENO

**84072**

