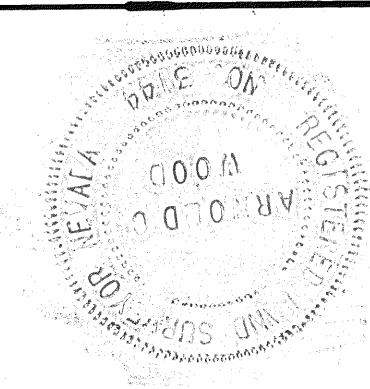
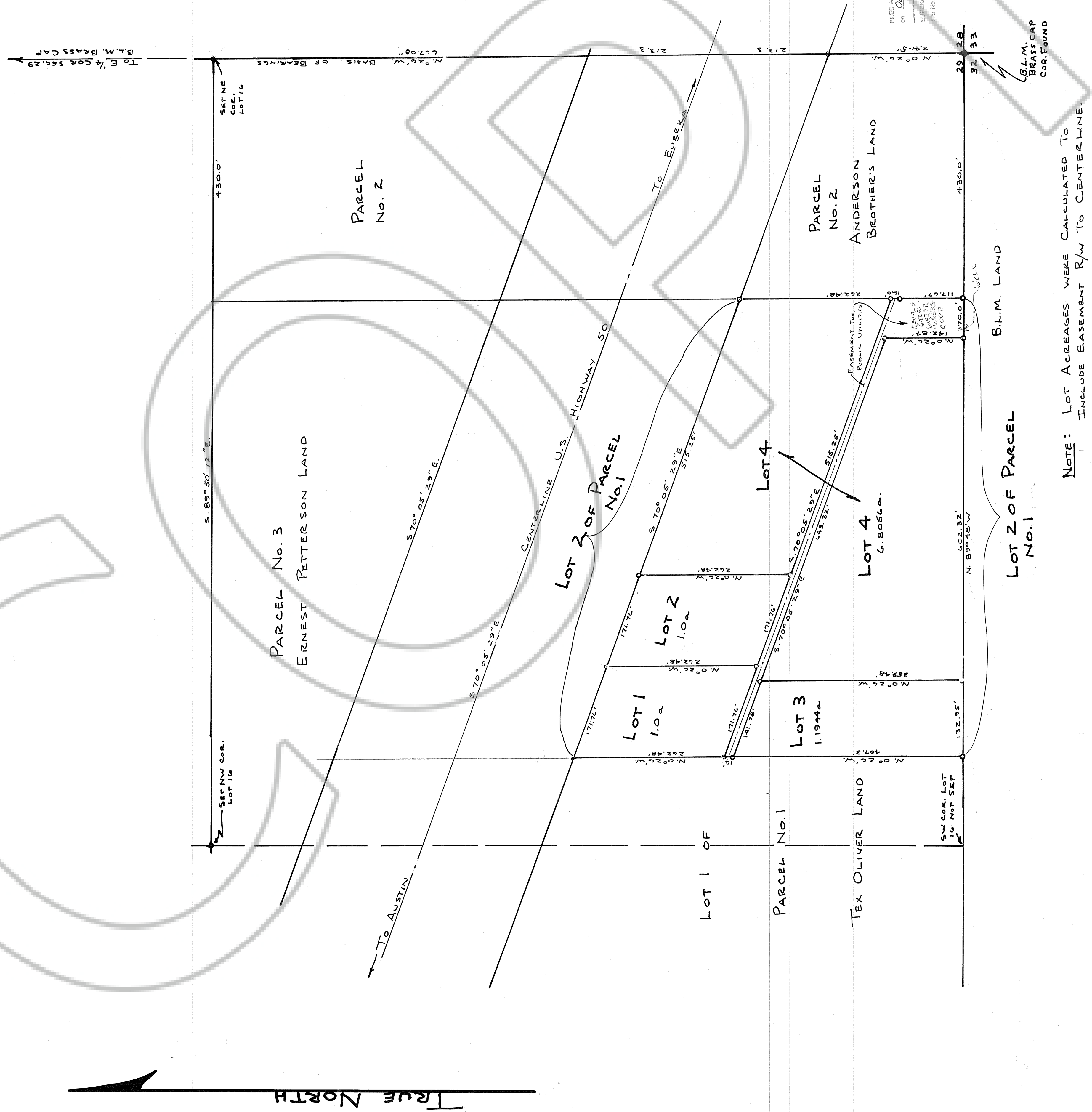


LOT 16 SECTION 29, T.20N., R.53E., M.D.MER., NEVADA



CERTIFICATION

I, ARNOLD C. WOOD, CERTIFY THAT THIS PLAT IS A TRUE + ACCURATE MAP OF THE SURVEY MADE BY ME DURING APRIL 1984.

Arnold C. Wood
 NEV. LIC. LAND SURVEYOR No. 3144

OWNER'S CERTIFICATE

THE UNDERSIGNED, EDWARD + JERRY LEE ANDERSON, BEING THE OWNERS OF LOT 2 PARCEL NO.1 AS SHOWN ON THIS MAP, DO HEREBY CONSENT TO THE PREPARATION + FILING OF THIS MAP + OFFER FOR DEDICATION ALL OF THE EASEMENTS FOR PUBLIC ACCESS + PUBLIC UTILITY PURPOSES AS DESIGNATED HEREON.

Edward Anderson
 EDWARD ANDERSON - OWNER
Jerry Lee Anderson
 JERRY LEE ANDERSON - OWNER

APPROVALS

AT A REGULAR MEETING OF THE EUREKA CO. COMMISSIONERS HELD ON August 1984, THIS MAP, CONSISTING OF ONE SHEET, WAS PRESENTED AS A PARCEL MAP OF LOT 2 OF PARCEL NO.1 IN LOT 16, SEC. 29, T.20N., R.53E., M.D.MER., IN EUREKA CO. BY JERRY AND EDWARD ANDERSON.

Robert N. Dannele
 CHAIRMAN, EUREKA CO. COMMISSIONERS
Paul Shugart
 CLERK, EUREKA COUNTY

AT A REGULAR MEETING OF THE EUREKA CO. PLANNING COMMISSION HELD ON 1984, THIS MAP, CONSISTING OF ONE SHEET WAS PRESENTED AS A PARCEL MAP OF LOT 2 OF PARCEL NO.1 IN LOT 16, SEC. 29, T.20N., R.53E., M.D.MER., IN EUREKA CO. BY JERRY + EDWARD ANDERSON.

Robert N. Dannele
 CHAIRMAN, EUREKA CO. PLANNING COMMISSION
Paul Shugart
 CLERK, EUREKA COUNTY

FILED AT THE OFFICE OF Jerry Lee Anderson
 ON Oct. 1 1984
 EUREKA COUNTY, NEVADA
 REC'D OF M.N. FILED IN RECORDS OF SECTION 29

EXPLANATION

- 0 1" STEEL PIN SET FOR PARCEL CORNERS WITH ALUMINUM TAG W/ WIRE TO IT.
- 5/8" REBAR PIN WITH ALUM. TAG.

PARCEL MAP OF LOT 2 OF PARCEL NO.1, LOT 16, SEC. 29, T.20N., R.53E., M.D.MER., NEVADA
 LOCATED IN: EUREKA CO. NEVADA
 FOR: JERRY AND EDWARD ANDERSON
 SCALE: 1" = 100'
 SURVEY + MAP BY: A.C. WOOD
 R.L.S. 3144 APRIL 1984

NOTE: LOT ACRES WERE CALCULATED TO INCLUDE EASEMENT R/W TO CENTERLINE.

DRAWING NUMBER
 SAFCO PRODUCTS • NEW HOPE, MINNESOTA
 REORDER BY PART NUMBER 6531

DRAWING NUMBER
 SAFCO PRODUCTS • NEW HOPE, MINNESOTA
 REORDER BY PART NUMBER 6531

DRAWING NUMBER
 SAFCO PRODUCTS • NEW HOPE, MINNESOTA
 REORDER BY PART NUMBER 6531

DRAWING NUMBER
 SAFCO PRODUCTS • NEW HOPE, MINNESOTA
 REORDER BY PART NUMBER 6531

96027

96027