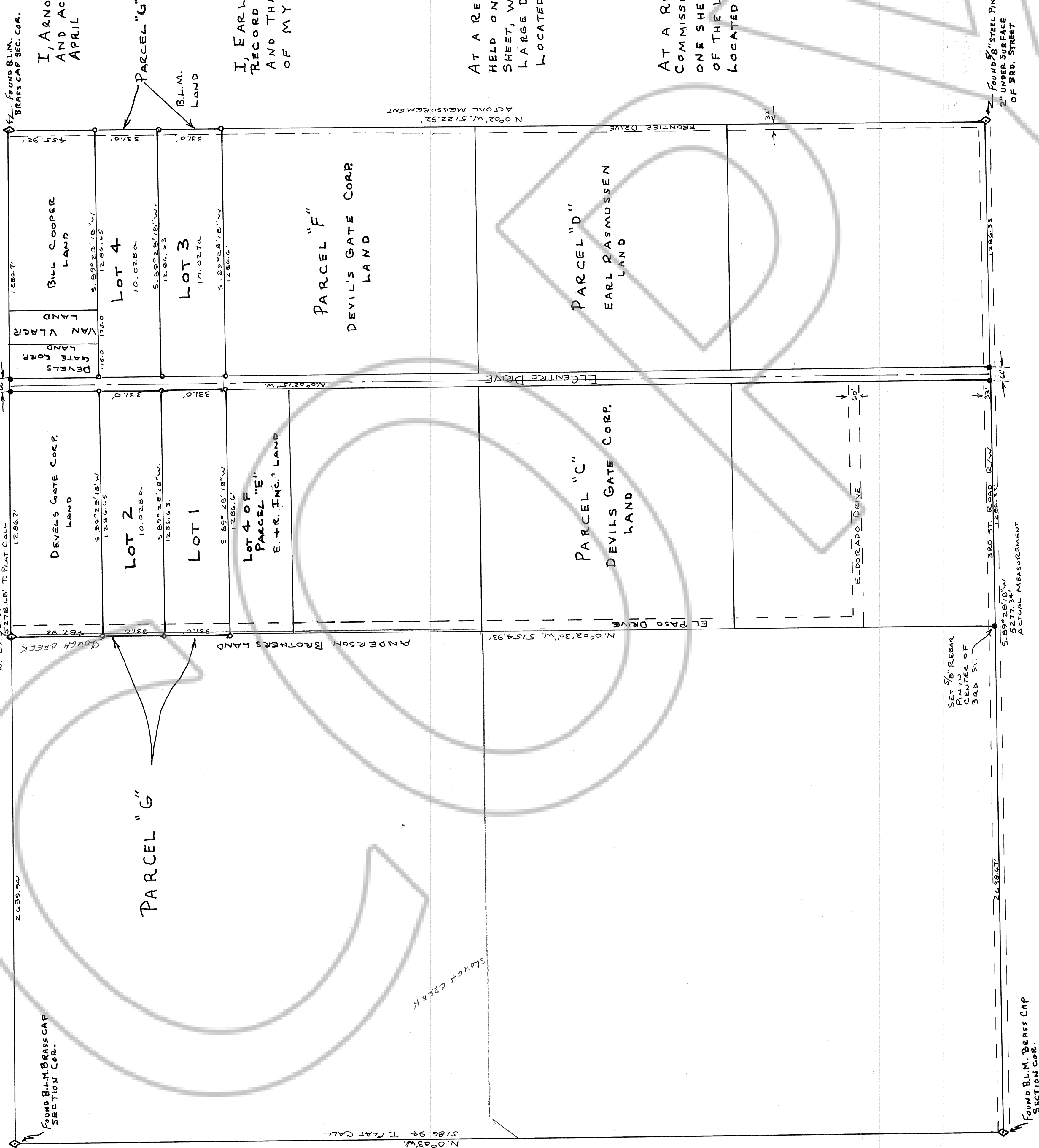


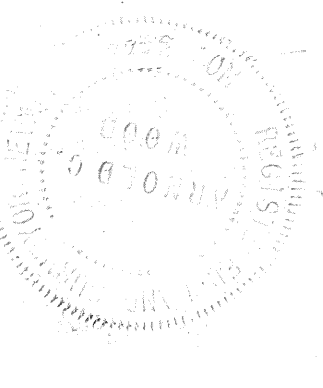
SECTION 17, T.20 N., R.53 E. M.D.MER. NEVADA



CERTIFICATION

I, ARNOLD C. WOOD, CERTIFY THAT THIS PLAT IS A TRUE AND ACCURATE MAP OF A SURVEY MADE BY ME DURING APRIL 1984.

Arnold C. Wood
NEV. LIC. LAND SURVEYOR No. 3144



OWNERS CERTIFICATION

I, EARL RASMUSSEN, CERTIFY THAT E.R. INC. OWNER OF RECORD OF PARCEL "G" IN THE E 1/2 SEC. 17, T.20 N., R.53 E., M.D. MER., AND THAT THIS PLAT IS AN ACCURATE REPRESENTATION OF MY PROPOSED PARCELLING OF SAID PARCEL "G"

Earl Rasmussen
OWNER PRESIDENT

APPROVALS

AT A REGULAR MEETING OF THE EUREKA CO. COMMISSIONERS HELD ON August 20 1984, THIS MAP, CONSISTING OF ONE SHEET, WAS PRESENTED AS A PARCEL MAP OF PARCEL "G" OF THE LARGE DIVISION MAP OF THE E 1/2, SEC. 17, T.20 N., R.53 E. M.D. MER., LOCATED IN EUREKA CO., BY EARL RASMUSSEN.

Chairman, Eureka Co. Commissioners
Clerk, Eureka County

AT A REGULAR MEETING OF THE EUREKA CO. PLANNING COMMISSION HELD ON 1984, THIS MAP, CONSISTING OF ONE SHEET, WAS PRESENTED AS A PARCEL MAP OF PARCEL "G" OF THE LARGE DIVISION MAP OF THE E 1/2, SEC. 17, T.20 N., R.53 E., LOCATED IN EUREKA CO., BY EARL RASMUSSEN.

Robert M. Demuth
Chairman, Eureka Co. Planning Commission
Clerk, Eureka County

FILED AT THE REQUEST OF Jerry Lee Anderson
on Oct. 1 1984 at 2:20 p.m. Book 3 M.
RECORDS OF EUREKA COUNTY, NEVADA
M.N. REDALETTI, Recorder
File No. 96029

BASIS FOR BEARINGS: TOWNSHIP PLAT CALL FOR LINE BETWEEN N 1/4 COR + NE COR. SEC. 17.

- 3/8" REBAR PIN 18" LONG WITH ALUM. TAG WITH R.L.S. 3144
- 5/8" REBAR PIN 18" LONG WITH ALUM. TAG WITH R.L.S. 3144
- SECTION OR 1/4 CORNER

NOTE:
ALL LOT ACRES WERE CALCULATED BY INCLUDING ALL ROAD RIGHT-OF-WAYS WITH THE EXCEPTION OF EL CENTRO DRIVE, WHERE THE LOT ACRES WERE EXTENDED TO THE CENTERLINE ONLY.

PARCEL MAP
OF: PARCEL "G" OF THE LARGE DIVISION MAP OF E 1/2 SECTION 17, T.20 N., R.53 E. M.D. MER. LOCATED IN: EUREKA CO., NEVADA
FOR: E.A.R.P. # 17-300
SCALE: 1" = 300'
SURVEY + MAP BY: ARNOLD C. WOOD
APRIL 1984
R.L.S. 3144