

All claims are 1500' by 600' with side centers set at 750' from the endlines. There are 7 posts at least 4" in diameter and 4.5' long set 1' in the ground, one for the discovery monument, one each for the four corners and two side centers as prescribed by N.R.S. Section 517.030.

The location of the section lines and 1/4 section lines on this map are approximate. They were projected using G.L.O. plots, B.L.M. projection diagrams and section corners found on the U.S.G.S. Roberts Creek Mountain 15' quadrangle maps.

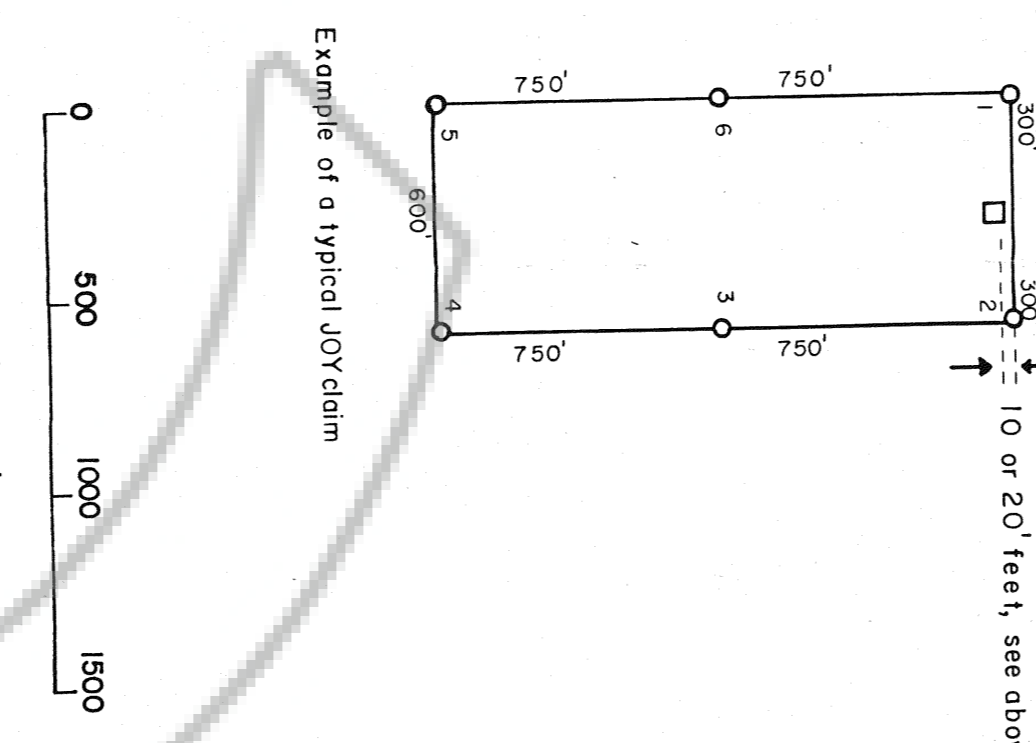
LOCATION DATES:

JOY 1 & 2	July 13, 1984
JOY 50-60, 63-72	July 13, 1984
JOY 7 thru JOY 23	July 16, 1984
JOY 24-41, 43-49, JOY 83 & 84	July 17, 1984
JOY 85, 86 & 87	August 9, 1984

OWNERS AND LOCATORS

ASARCO, Incorporated
 510 East Plumb Lane
 Reno, Nevada 89502

- EXPLANATION**
- Location Monument, wooden 4x4 post, 10' from endline
 - Location Monument, PVC post, 20' from endline
 - except JOY 83 thru JOY 87 which are 10' from endline.



ASARCO INCORPORATED
 510 EAST PLUMB LANE
 RENO, NEVADA 89502

**MAP OF THE
 JOY LODE MINING CLAIMS**
 Sections 35&36 T24N, R50E,
 Section 1, T23-1/2N, R50E,
 Sections 1&12, T23N, R50E,
 Sections 6&7, T23N, R51E,
 M.D.M.&B.
 Unknown Mining District
 Eureka County, Nevada

FILED AT THE REQUEST OF **ASARCO INC**
 on October 2, 1984, at 11:09 AM
 SURETY COUNTY, NEVADA
 REC'D BY: [Signature]
 Fee \$2,350.00

10-01-84 BJM/mjh