

**OWNER'S CERTIFICATE:**  
KNOWN ALL MEN BY THESE PRESENTS, THAT EUREKA COUNTY, THE UNDERSIGNED, BEING OWNERS OF A PORTION OF THE SE 1/4 SECTION 14, AND THE NE 1/4 SECTION 23, T.19N., R.15E., M.D.B. & M., DO HEREBY CONSENT TO THE PREPARATION AND FILING OF THIS MAP, THAT MAY BE HEREBY OFFER WITHOUT RESERVATION FOR STREET AND PUBLIC UTILITIES PURPOSES ALL THE AREAS DILINEATED FOR SUCH PURPOSES ON THIS MAP IN WITNESS WHEREOF WE HAVE HERETO SET OUR HANDS THE 5<sup>TH</sup> DAY OF October, 1984.

*Charles E. J. Jackson*  
CHAIRMAN, EUREKA COUNTY COMMISSION  
*Paul J. Randall*  
ATTORNEY-AT-LAW, EUREKA COUNTY

**WATER RESOURCES APPROVAL:**  
THIS FINAL MAP IS APPROVED BY THE DIVISION OF WATER RESOURCES OF THE DEPARTMENT OF CONSERVATION AND NATURAL RESOURCES CONCERNING WATER QUANTITY, SUBJECT TO REVIEW OF APPROVAL ON FILE IN THIS OFFICE.

*Christine Plank*  
DIVISION OF WATER RESOURCES  
9/24/84  
DATE

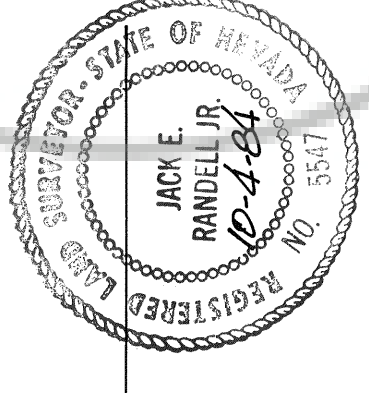
**HEALTH DIVISION APPROVAL:**  
THIS FINAL MAP IS APPROVED BY THE HEALTH DIVISION OF THE DEPARTMENT OF HUMAN RESOURCES CONCERNING SEWAGE DISPOSAL, WATER POLLUTION, WATER QUALITY, AND WATER SUPPLY FACILITIES, IN ACCORDANCE WITH NEVADA REVISED STATUTES THIS APPROVAL PREDICATES COMMUNITY WATER SUPPLY AND COMMUNITY SEWAGE DISPOSAL.

*James C. Maston*  
HEALTH DIVISION  
9/18/84  
DATE

**UTILITY APPROVALS:**  
THIS FINAL MAP AND THE EASEMENTS SHOWN ON THIS PLAT HAVE BEEN CHECKED AND APPROVED BY THE UNDERSIGNED.

*RJ Combs*  
NEV. BELL  
6/4/84  
*Shirley M. J. Chief Engineer*  
MT WHEELER POWER, INC.

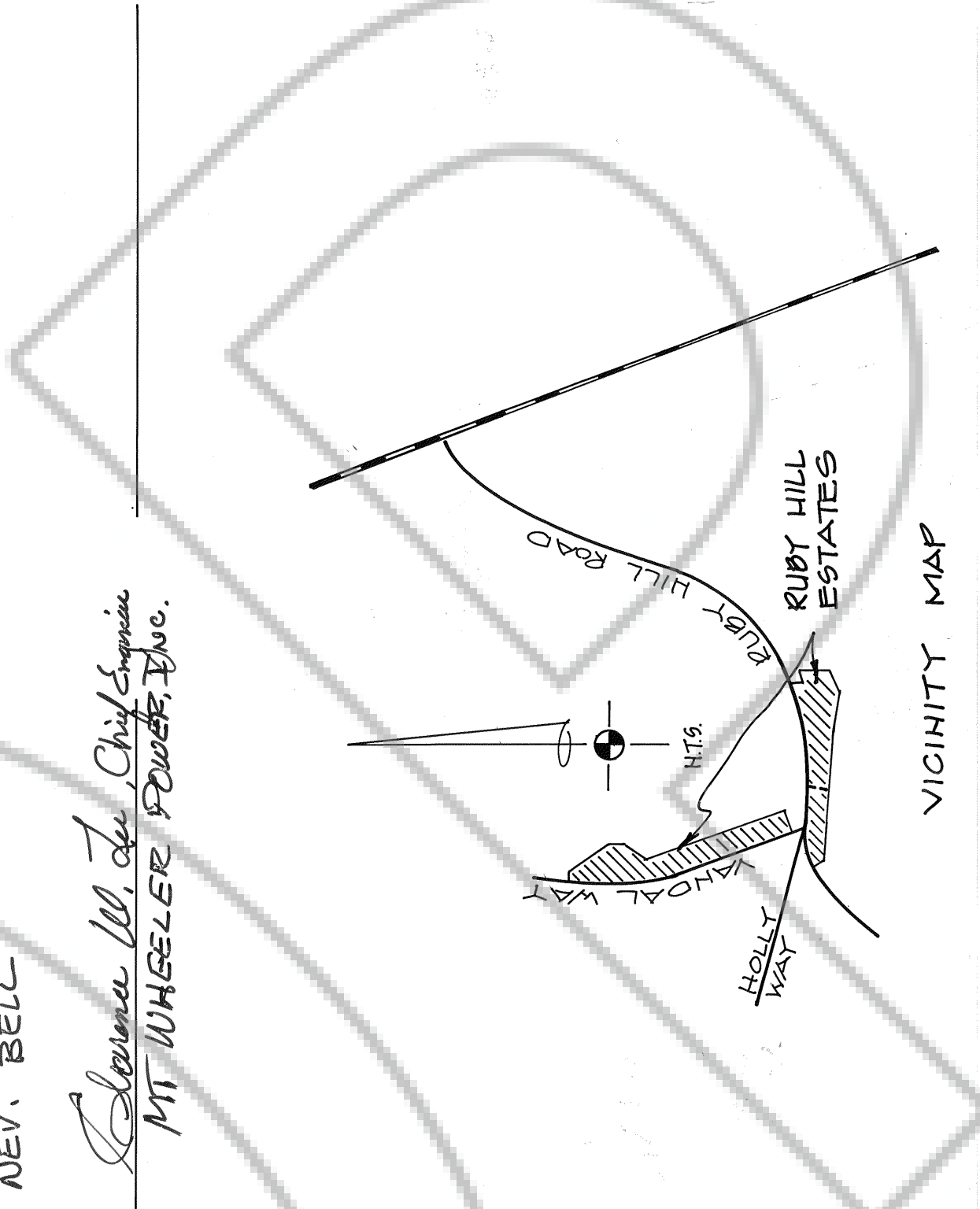
**SURVEYOR'S CERTIFICATE:**  
I, JACK E. RANDELL, A REGISTERED LAND SURVEYOR IN THE STATE OF NEVADA, CERTIFY THAT:  
1) THIS IS A TRUE AND ACCURATE REPRESENTATION OF THE LANDS SURVEYED UNDER MY SUPERVISION AT THE INSTANCE OF EUREKA COUNTY  
2) THE LANDS SURVEYED ARE WITHIN SECTIONS 14 & 23, T.19N., R.15E., M.D.B. & M. AND THE SURVEY WAS COMPLETED ON 10-4-84  
3) THIS PLAT COMPLIES WITH APPLICABLE STATE STATUTES AND ANY LOCAL ORDINANCES  
4) THE MONUMENTS ARE OF THE CHARACTER SHOWN AND OCCUPY THE POSITIONS INDICATED.



*Jack E. Randell*  
JACK E. RANDELL 816/6 9547

**ENGINEER'S CERTIFICATE:**  
I, Paul Lumos CERTIFY THAT I HAVE EXAMINED THIS MAP CONSISTING OF TWO (2) SHEETS, AND THAT ALL PROVISIONS AND ORDINANCES APPLICABLE HAVE BEEN COMPLIED WITH AND THAT I AM SATISFIED THAT THIS MAP IS TECHNICALLY CORRECT, A PROPER DEPOSIT OF PERFORMANCE BOND HAS BEEN POSTED GUARANTEEING THE SETTING OF THE MONUMENTS SHOWN ON OR BEFORE

*Paul Lumos*  
COUNTY ENGINEER  
10-5-84  
DATE



**APPROVAL EUREKA COUNTY PLANNING COMMISSION:**  
AT A REGULAR MEETING OF THE EUREKA COUNTY PLANNING COMMISSION, STATE OF NEVADA, HELD ON THE 5<sup>TH</sup> DAY OF October, 1984, THIS MAP WAS APPROVED FOR SUBDIVISION PURPOSES PURSUANT TO N.R.S. CHAPTER 27B.

*Charles Semels*  
CHAIRMAN, EUREKA COUNTY PLANNING COMMISSION  
*Paul J. Randall*  
ATTORNEY-AT-LAW, EUREKA COUNTY

**APPROVAL EUREKA COUNTY COMMISSIONER'S:**  
AT A REGULAR MEETING OF THE BOARD OF COUNTY COMMISSIONERS OF EUREKA COUNTY, STATE OF NEVADA, HELD ON THE 5<sup>TH</sup> DAY OF October, 1984, THIS MAP WAS DULY AND REGULARLY APPROVED FOR SUBDIVISION PURPOSES PURSUANT TO N.R.S. CHAPTER 27B.

*Charles Semels*  
CHAIRMAN, EUREKA COUNTY COMMISSION  
*Paul J. Randall*  
ATTORNEY-AT-LAW, EUREKA COUNTY

**RECORDER'S CERTIFICATE:**  
FILED AT THE REQUEST OF Paul Lumos, ON THE 5<sup>TH</sup> DAY OF October, 1984, AT 1:00 MIN. PAST 1:00 P.M. IN THE OFFICIAL RECORDS OF EUREKA COUNTY, NEVADA.

FILE NO. 96135  
FEE: No Fee  
*M. J. ...*  
EUREKA COUNTY RECORDER

OFFICIAL PLAT  
**RUBY HILL ESTATES**  
SUBDIVISION

A PORTION OF THE SE 1/4 OF THE SE 1/4 SEC 14 AND THE NE 1/4 OF THE NE 1/4, SEC. 23, T. 19 N., R. 15 E., M. D. B. & M. EUREKA TOWNSHIP, EUREKA COUNTY, NEVADA.  
PREPARED BY:

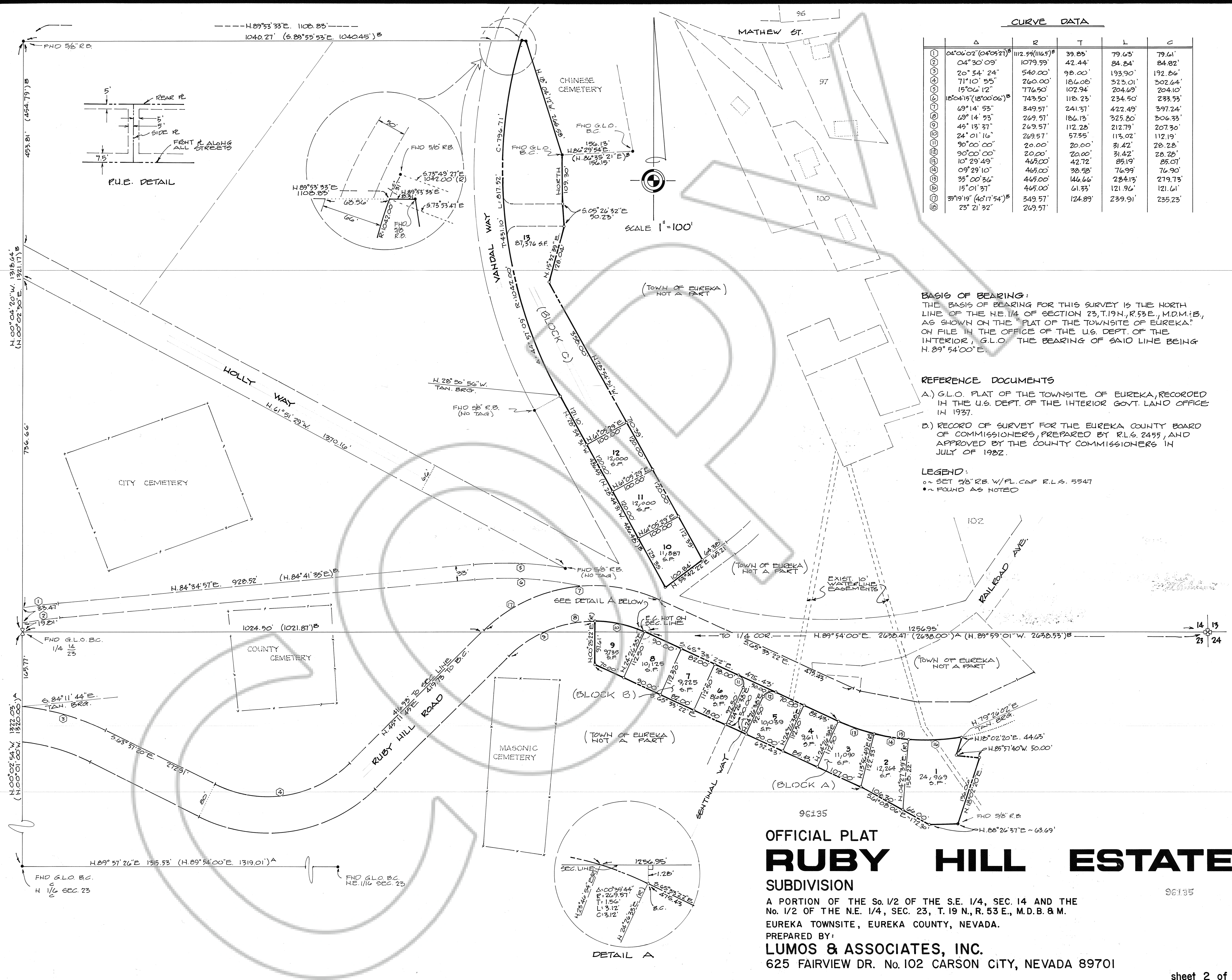
**LUMOS & ASSOCIATES, INC.**  
625 FAIRVIEW DR. No. 102 CARSON CITY, NEVADA 89701

DRAWING NUMBER  
SAFED PRODUCTS • NEW HAVEN, CONNECTICUT  
RECORDED BY PART NUMBER 8581

DRAWING NUMBER  
SAFED PRODUCTS • NEW HAVEN, CONNECTICUT  
RECORDED BY PART NUMBER 8581

DRAWING NUMBER  
96135  
SAFED PRODUCTS • NEW HAVEN, CONNECTICUT  
RECORDED BY PART NUMBER 8581

DRAWING NUMBER  
Ruby Hill Estates  
Map #1  
SAFED PRODUCTS • NEW HAVEN, CONNECTICUT  
RECORDED BY PART NUMBER 8581



**CURVE DATA**

Δ	R	T	L	C
04°04'02" (04°05'21") <sup>B</sup>	112.59 (116.9) <sup>B</sup>	39.83'	79.63'	79.61'
04°30'09"	1079.59'	42.44'	84.84'	84.82'
20°34'24"	540.00'	98.00'	193.90'	192.86'
71°10'55"	260.00'	186.00'	323.01'	302.64'
15°06'12"	776.90'	102.94'	204.69'	204.10'
18°04'15" (18°00'06") <sup>B</sup>	743.90'	118.23'	234.50'	233.93'
69°14'53"	349.57'	241.37'	422.49'	397.24'
69°14'53"	269.57'	186.13'	325.80'	306.33'
45°13'37"	269.57'	112.28'	212.79'	207.30'
24°01'16"	269.57'	57.35'	113.02'	112.19'
90°00'00"	20.00'	20.00'	31.42'	28.28'
90°00'00"	20.00'	20.00'	31.42'	28.28'
10°29'49"	469.00'	42.72'	85.19'	85.01'
09°29'10"	469.00'	38.58'	76.99'	76.90'
35°00'36"	469.00'	146.66'	284.13'	279.73'
15°01'37"	469.00'	61.33'	121.96'	121.61'
39°19'19" (40°17'54") <sup>B</sup>	349.57'	124.89'	239.91'	235.23'
23°21'32"	269.57'			

**BASIS OF BEARING:**  
THE BASIS OF BEARING FOR THIS SURVEY IS THE NORTH LINE OF THE N.E. 1/4 OF SECTION 23, T.19 N., R.53 E., M.D.M. 8 & M., AS SHOWN ON THE "PLAT OF THE TOWNSITE OF EUREKA," ON FILE IN THE OFFICE OF THE U.S. DEPT. OF THE INTERIOR, G.L.O. THE BEARING OF SAID LINE BEING N. 89° 54' 00" E.

**REFERENCE DOCUMENTS**  
A.) G.L.O. PLAT OF THE TOWNSITE OF EUREKA, RECORDED IN THE U.S. DEPT. OF THE INTERIOR GOVT. LAND OFFICE IN 1937.  
B.) RECORD OF SURVEY FOR THE EUREKA COUNTY BOARD OF COMMISSIONERS, PREPARED BY R.L.G. 2455, AND APPROVED BY THE COUNTY COMMISSIONERS IN JULY OF 1982.

**LEGEND:**  
• SET 3/8" R.B. W/PL. CAP R.L.S. 5547  
• FOUND AS NOTED

**OFFICIAL PLAT**  
**RUBY HILL ESTATES**  
**SUBDIVISION**

A PORTION OF THE S. 1/2 OF THE S.E. 1/4, SEC. 14 AND THE N. 1/2 OF THE N.E. 1/4, SEC. 23, T. 19 N., R. 53 E., M.D.B. & M. EUREKA TOWNSITE, EUREKA COUNTY, NEVADA.  
PREPARED BY:  
**LUMOS & ASSOCIATES, INC.**  
625 FAIRVIEW DR. No. 102 CARSON CITY, NEVADA 89701

96135