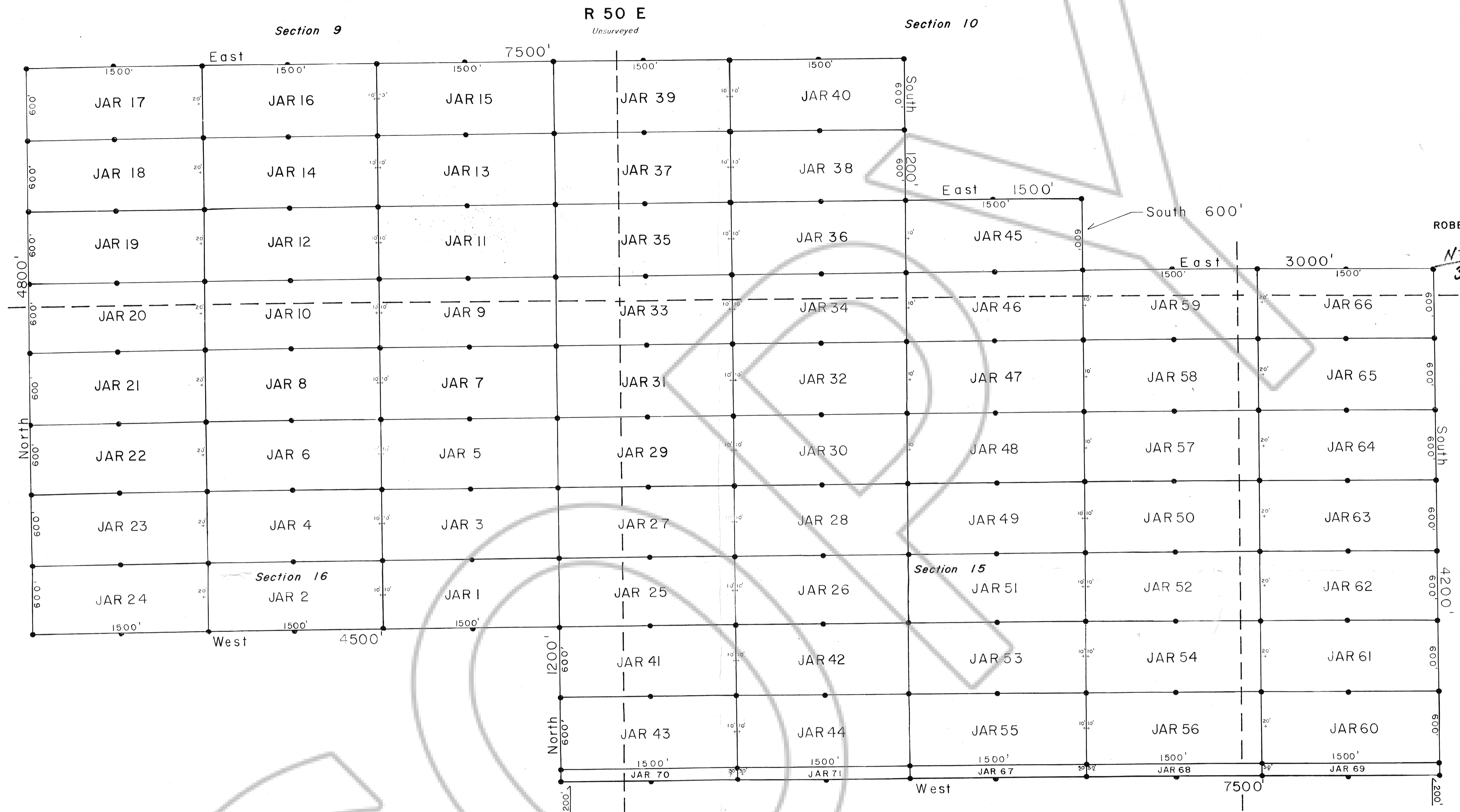


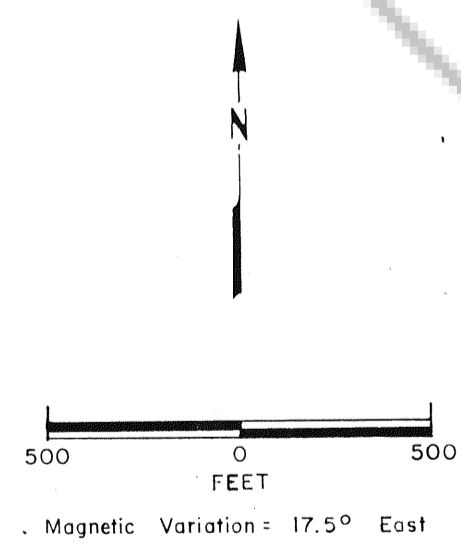
T  
2  
3  
N



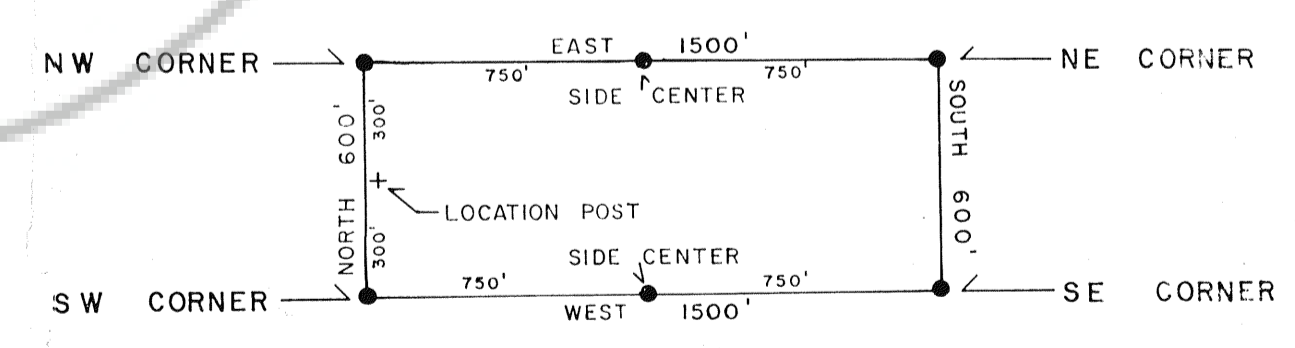
ROBERTS CREEK MTN +  
 N 80° E  
 3020 FT. ↗

**EXPLANATION**

ALL CLAIMS ARE 1500 x 600 FEET, AND ARE RECTANGULAR.  
 ALL CLAIMS RUN EAST-WEST  
 ALL CLAIMS ARE MONUMENTED WITH 4" DIAMETER PVC POSTS, 4.5 FEET IN LENGTH, LOCATED AT THE CORNERS AND AT THE CENTER OF EACH SIDE LINE.  
 ALL CLAIMS ON THIS MAP WERE LOCATED IN AUGUST AND SEPTEMBER, 1984



**TYPICAL LAYOUT**



FILED AT THE REQUEST OF KenneCott Corp.  
 on November 7, 1984 at 13 mins. past 2 P. M.  
 RECORDS OF  
 EUREKA COUNTY, NEVADA  
 File No. 96642 M.N. REBALEATI, Recorder  
 Fee \$ 1,065.00

Map of  
**"JAR" LODE MINING CLAIMS**  
 Eureka County, Nevada

Owned by  
 KENNECOTT  
 P.O. Box 11248  
 Salt Lake City, UT  
 84147

Prepared by  
 WESTERN STATES SURVEYING  
 & EXPLORATION ASSOCIATES

96642