

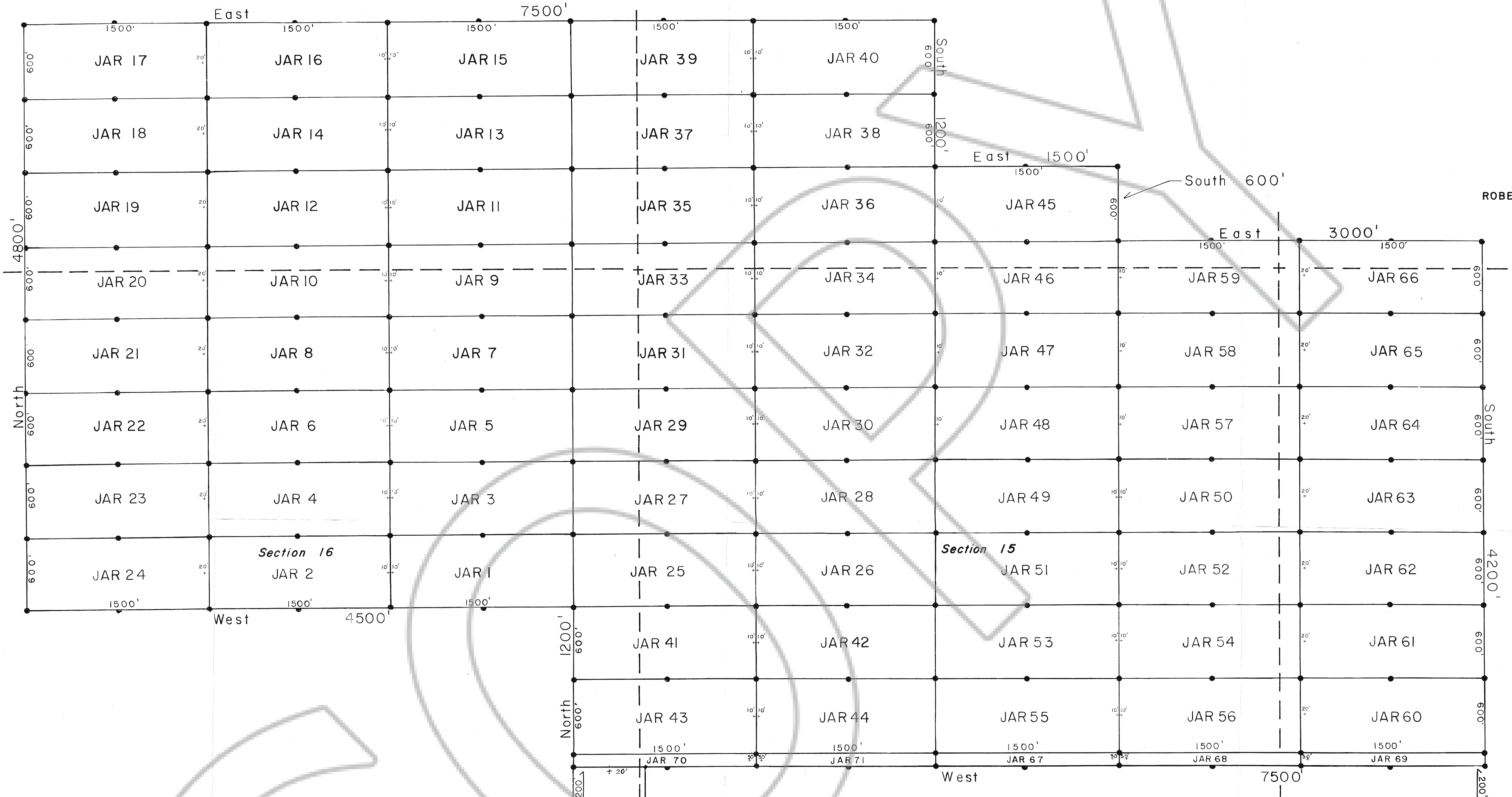
R 50 E
Unsurveyed

Section 9

Section 10

ROBERTS CREEK MTN.

N 32 T
M 8 B D M



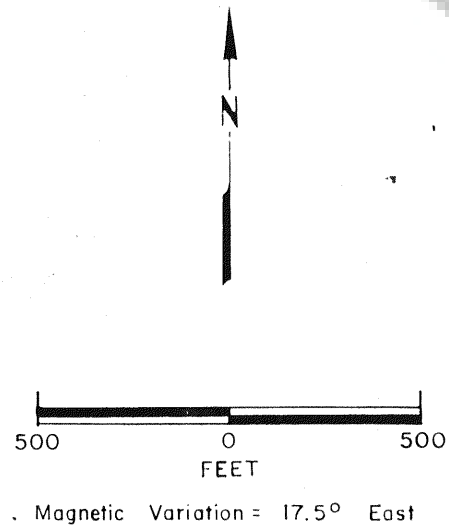
EXPLANATION

ALL CLAIMS ARE 1500 x 600 FEET, AND ARE RECTANGULAR.

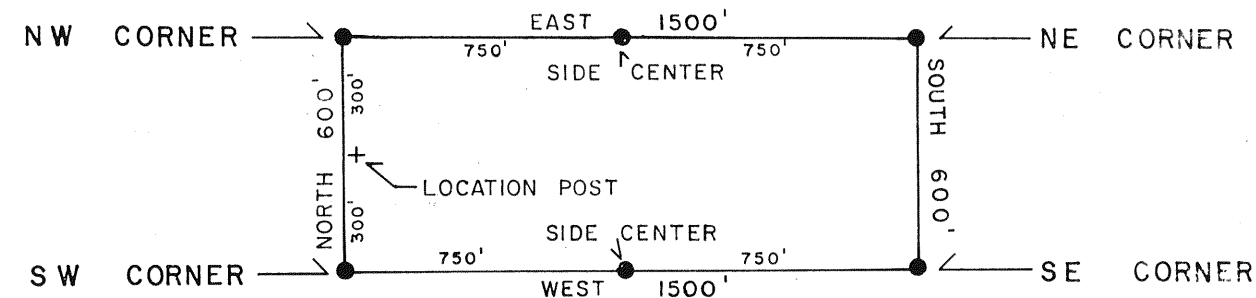
ALL CLAIMS RUN EAST-WEST

ALL CLAIMS ARE MONUMENTED WITH 4" DIAMETER PVC POSTS, 4.5 FEET IN LENGTH, LOCATED AT THE CORNERS AND AT THE CENTER OF EACH SIDE LINE.

ALL CLAIMS ON THIS MAP WERE LOCATED IN AUGUST AND SEPTEMBER, 1984
BY N.S.V.



TYPICAL LAYOUT



FILED AT THE REQUEST OF Kennecott Corp.
on November 14, 1984, at 41 mins. past 10 A. M.
EUREKA COUNTY, NEVADA RECORDS OF
File No. 96864 M.N. REBALEATI, Recorder
Fee \$15.00

Map of
"JAR" LODE MINING CLAIMS
Who Eureka County, Nevada

Owned by
KENNECOTT
P.O. Box 11248
Salt Lake City, UT
84147

Prepared by
WESTERN STATES SURVEYING
& EXPLORATION ASSOCIATES