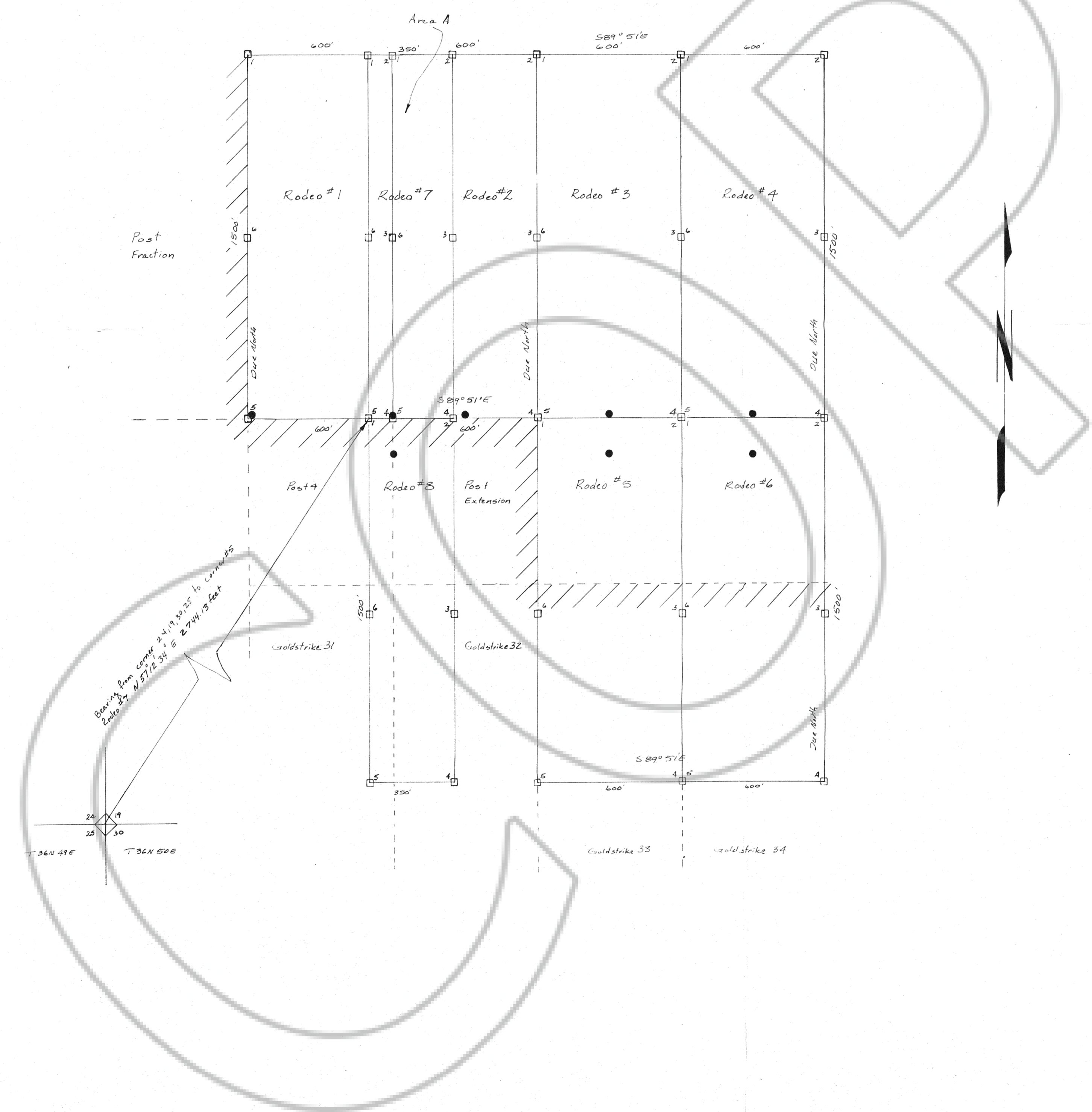


1"=100'
Detail of Area A
Rodeo #7



Location Information

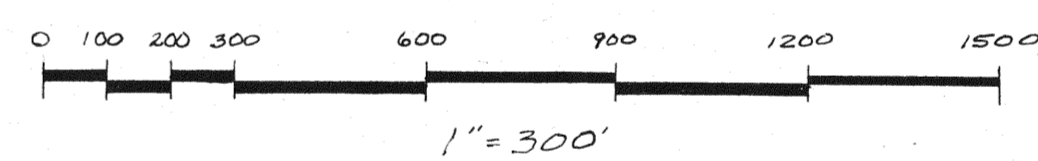
Rodeo #1-4 located October 31, 1984
 Rodeo #5-6 located October 30, 1984
 Rodeo #7 located October 31, 1984
 Rodeo #8 located November 1, 1984
 All corners and side centers were erected on or before November 1, 1984

Owner & locator

Western States Minerals Corp
 Lee I. Perry - Agent
 251 West Commercial
 Elko Nevada 89801

Legend

- = 4x4 Wooden Post
- = Location Monument
- /// = Existing claims



FILED AT THE REQUEST OF Western States Minerals Corp.
 on November 15, 1984 at 15 mins. past 10 A.M.
 EUREKA COUNTY, NEVADA M.N. REBALEATI, Recorder
 File No. 96865 Fee \$ 5.00

Amended Map
 note: SECTION CORNER TIE WAS CHANGED.

Map of Lode Claims, Rodeo #1-8
 Rodeo #1-8 are in
 Section 19 T36N R50E M.D.B.M.
 Lynn Mining District, Eureka Co. Nevada
 Western States Mineral Corp.
 251 West Commercial, P.O. Box 29
 Elko, Nevada, 89801