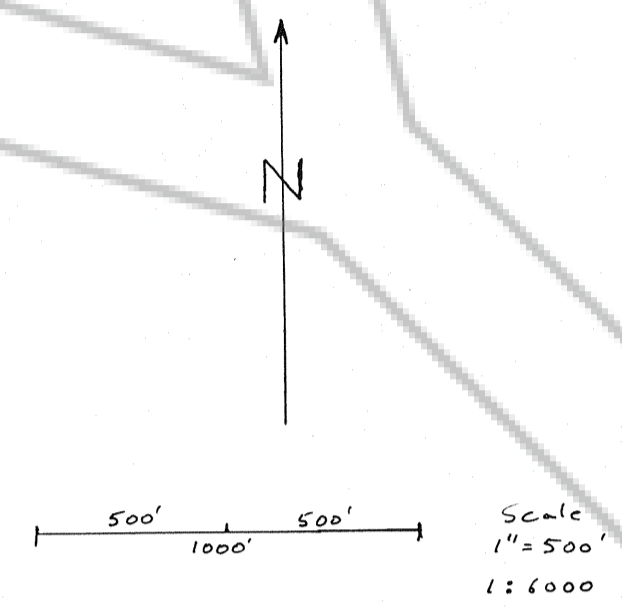
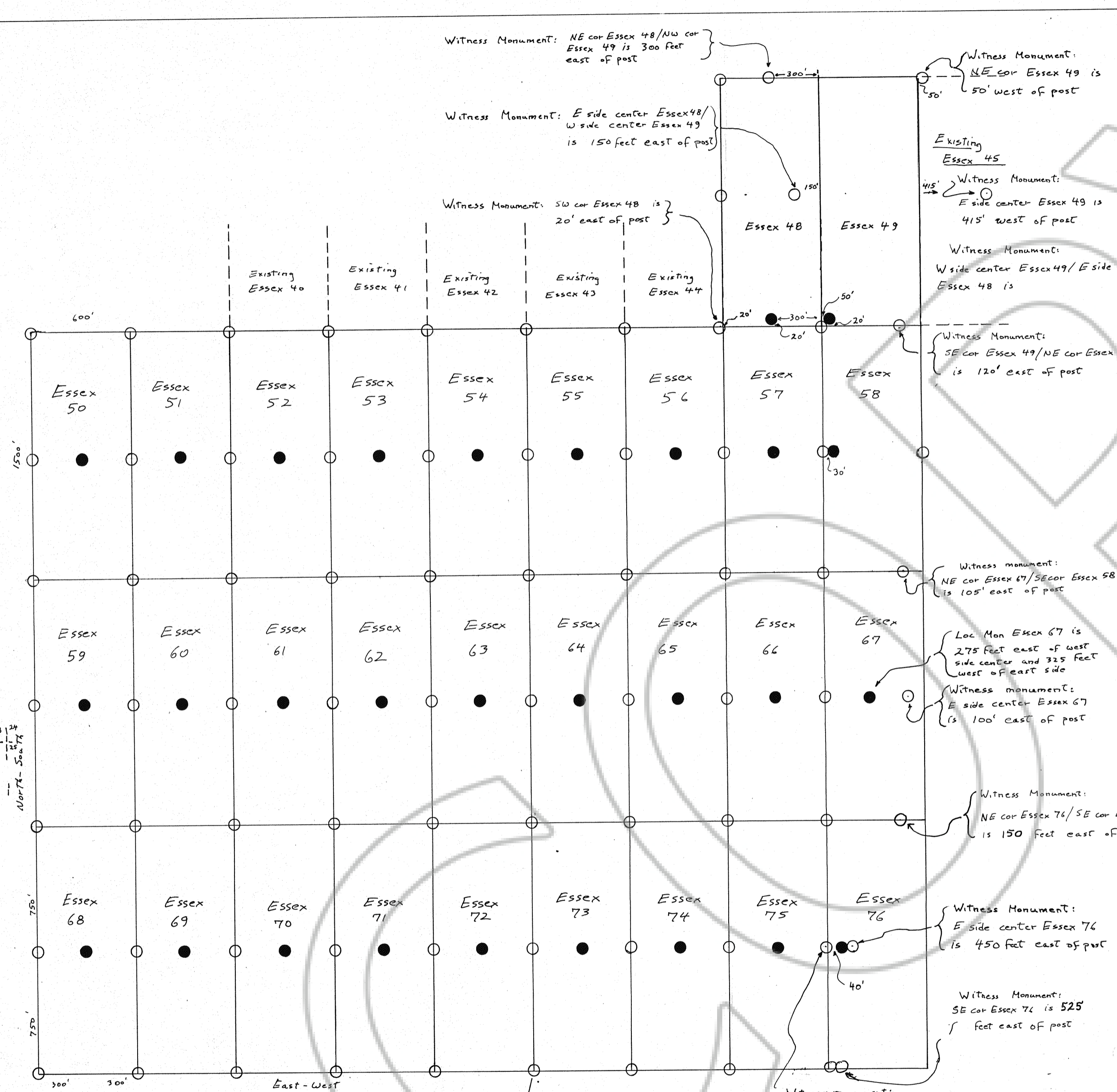


Approximate location of Section Corner (not found)



Eureka County Nevada  
Unknown Mining District  
Essex 48-76 claims  
Sections 24, 25, T. 22 N., R. 50 E.

All monuments are 4" x 4" wooden posts  
● Location Monument  
○ Corner, side center Monument

FILED AT THE REQUEST OF Consolidated Nevada Corp.  
on November 16, 1984 at 22 mins. past 9 A. M.  
RECORDS OF  
EUREKA COUNTY, NEVADA  
File No. 96901  
M.N. REGALEATI, Recorder  
Fee \$ 435.00

Tic: (surveyed with Brunton and Tape)  
SE cor Essex 72/SW cor Essex 73  
is 1401 feet N 13 1/2° E from  
USGS Benchmark GWM-10 (1946, elev. 6438)  
near the center of Section 25, T. 22 N., R. 50 E.