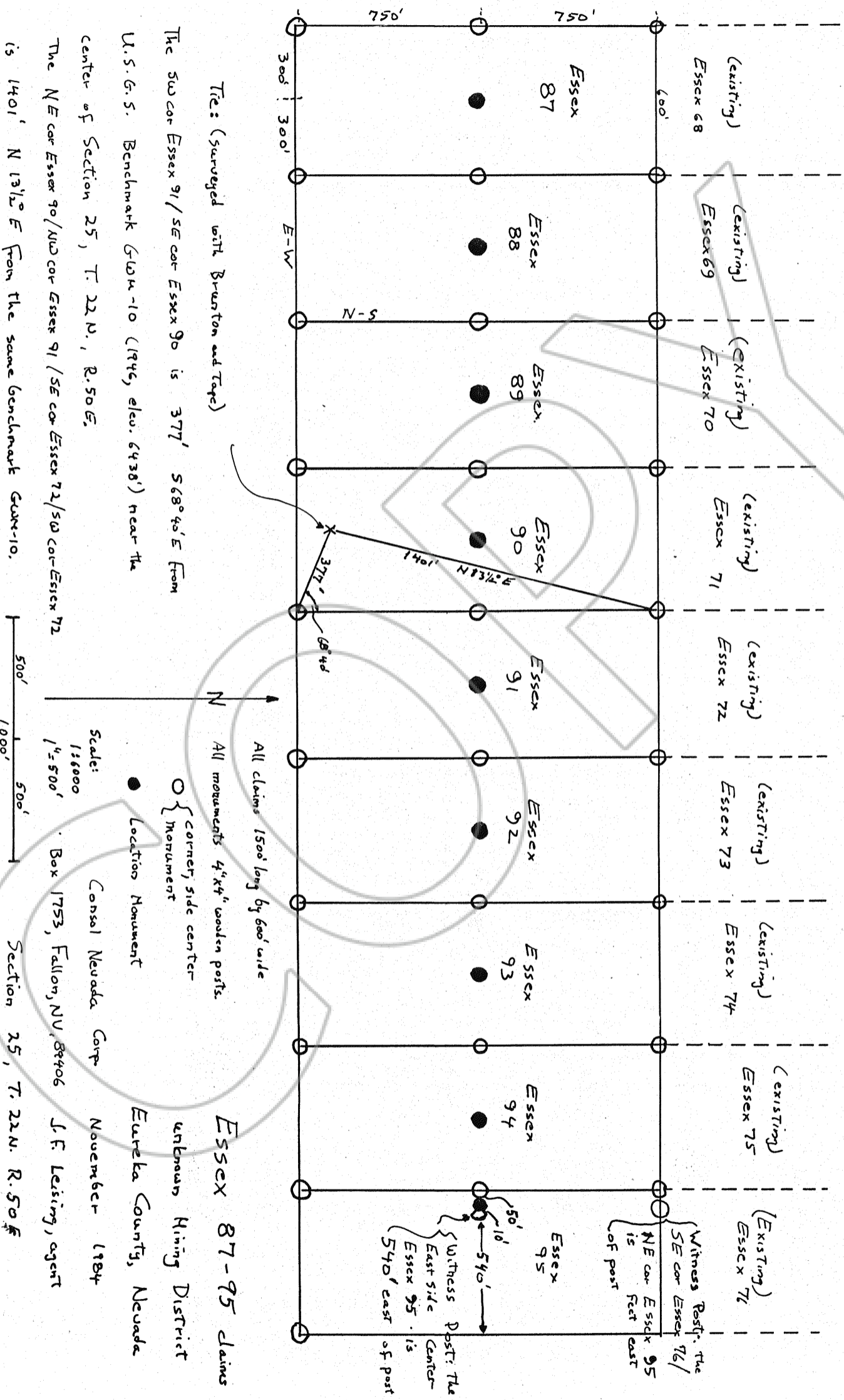


EUREKA COUNTY, NEVADA
 File No. 96928

RECORDS OF
 M.N. REBALEATI, Recorder
 Fee \$ 135.00



The: (Surveyed with Brunton and Tape)

The SW cor Essex 91/SE cor Essex 90 is 377' S 68° 44' E from

U.S.G.S. Benchmark GUM-10 (1946, elev. 6438') near the

center of Section 25, T. 22 N., R. 50 E.

The NE cor Essex 90/NE cor Essex 91/SE cor Essex 72/SW cor Essex 72

is 1401' N 13 1/2° E from the same benchmark GUM-10.

Essex 87-95 claims

unknown Mining District

Eureka County, Nevada

November 1984

J. F. Leising, agent

Witness Post: The
 SE cor Essex 76/
 NE cor Essex 95
 is 15 feet east
 of post

Witness Post: The
 East Side
 Center
 Essex 95 is
 540' east
 of post

Scale:
 1:6000
 1" = 500'

Consol Nevada Corp
 Box 1753, Fallon, NV, 89406

Section 25, T. 22 N. R. 50 E