

T
19
N

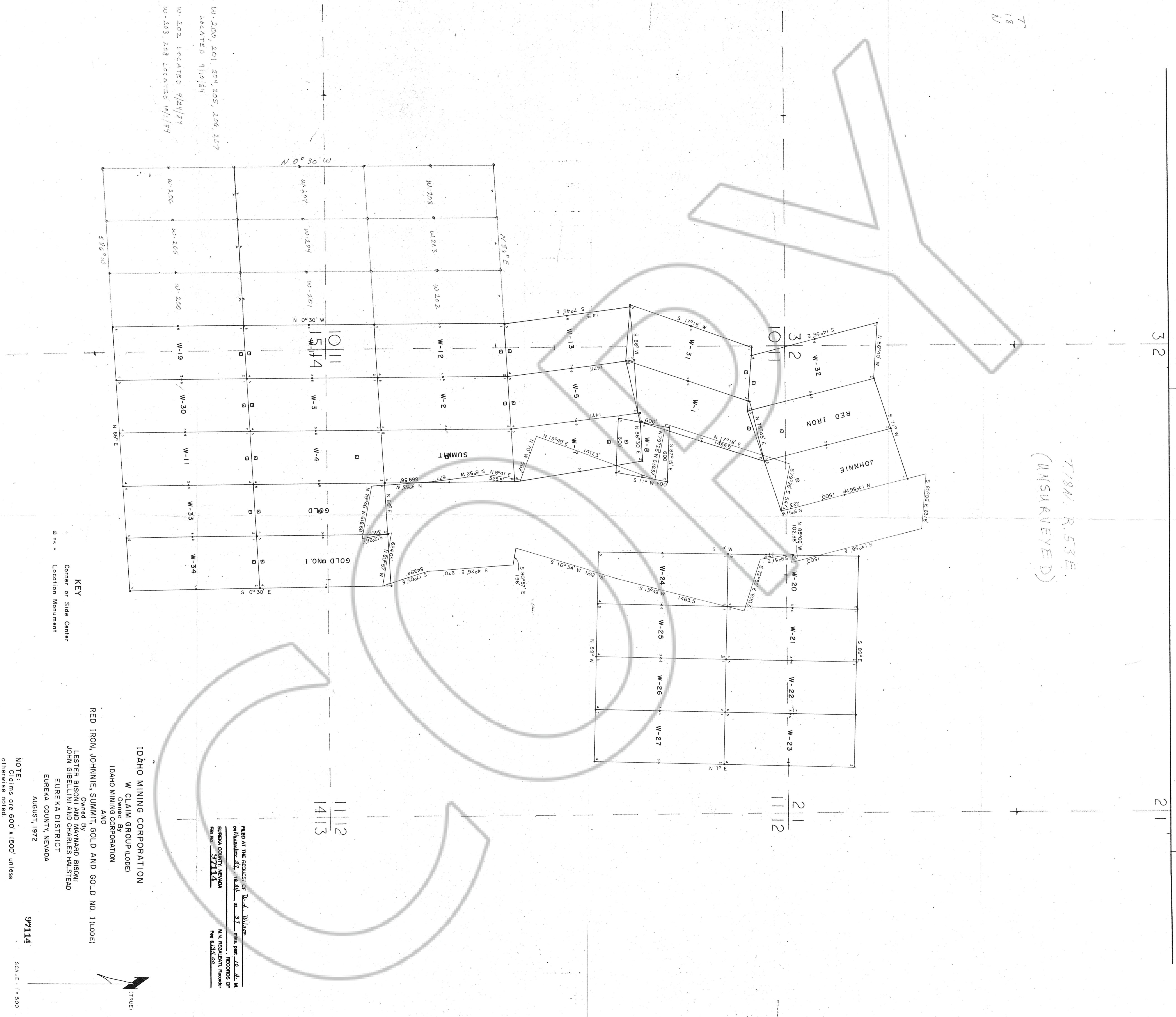
R. 53 E.

35

36

T
18
N

T18N, R. 53 E.
(UNSURVEYED)



W-200, 201, 204, 205, 206, 207
LOCATED 9/10/84

W-202 LOCATED 9/24/84

W-203, 208 LOCATED 10/1/84

CLAIM LOCATION MAP
W-200 TO W-208 IN SECTIONS
10 AND 15, T19N, R53E, MDB&M
(UNSURVEYED) EUREKA COUNTY,
NEVADA. LOCATOR: WINDFALL VENTURE,
P.O. BOX 2183, GRAND JUNCTION, CO
81502. DATED 11/21/84

KEY
 * Corner of Side Center
 □ Location Monument

NOTE:
 Elevations are 600' x 1500' unless
 otherwise noted.

97114

SCALE: 1" = 500'

IDAHO MINING CORPORATION
 W CLAIM GROUP (LODE)
 Owned By
 IDAHO MINING CORPORATION
 AND
 RED IRON, JOHNNIE, SUMMIT, GOLD AND GOLD NO. 1 (LODES)
 Owned By
 LESTER BISONI AND MARSH BISONI,
 JOHN GIBELINI AND CHARLES HULSTED
 EUREKA DISTRICT
 EUREKA COUNTY, NEVADA
 AUGUST, 1972

FILED AT THE REQUEST OF W.D. Wilson
 on November 27, 1984 at 3:17 pm, per LO. AL. M.
 EUREKA COUNTY, NEVADA RECORDS OF
 FILE NO. 97114 M.N. REBALMENT, Recorder
 Fee \$135.00

1112
1413