

R.49E | R.50E.

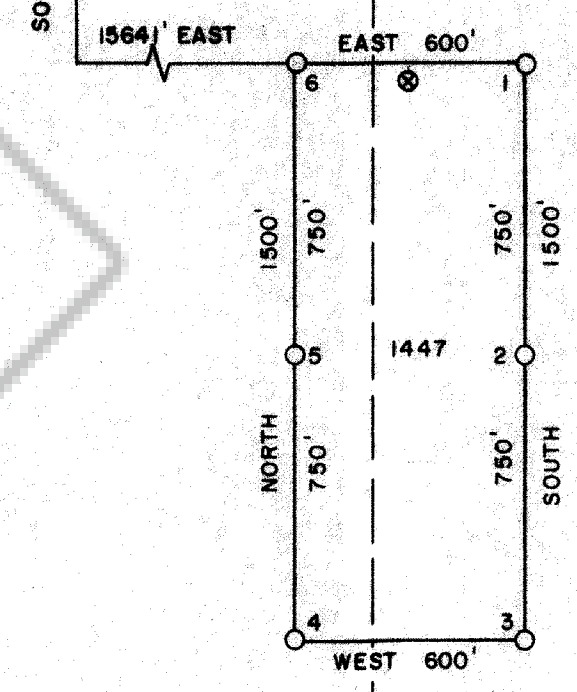
② | ①
⑪ | ⑫

① | ⑥
⑫ | ⑦

R. 50 E.

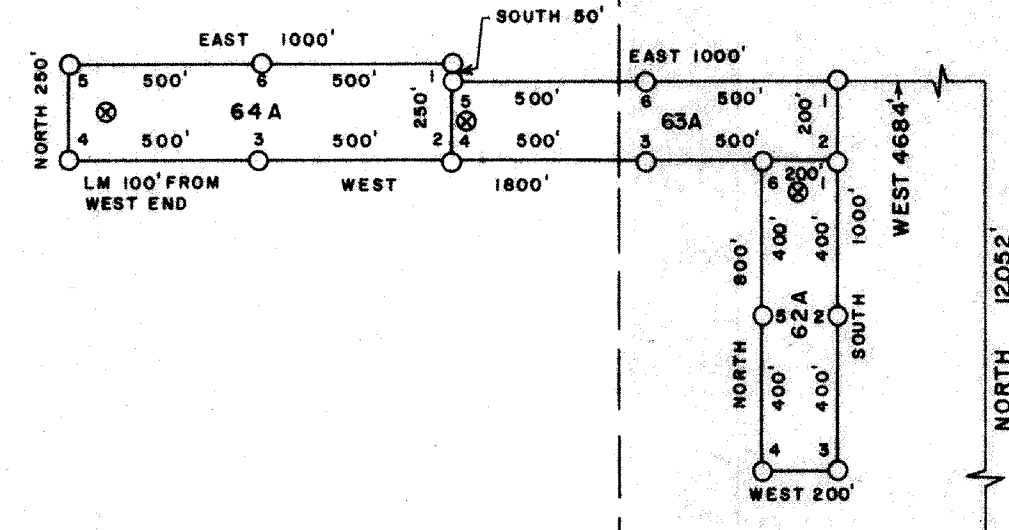
⑲ | ⑲
⑳ | ㉔

SOUTHEAST CORNER
SECTION 24
T.22N., R.49E. M.D.P.M.

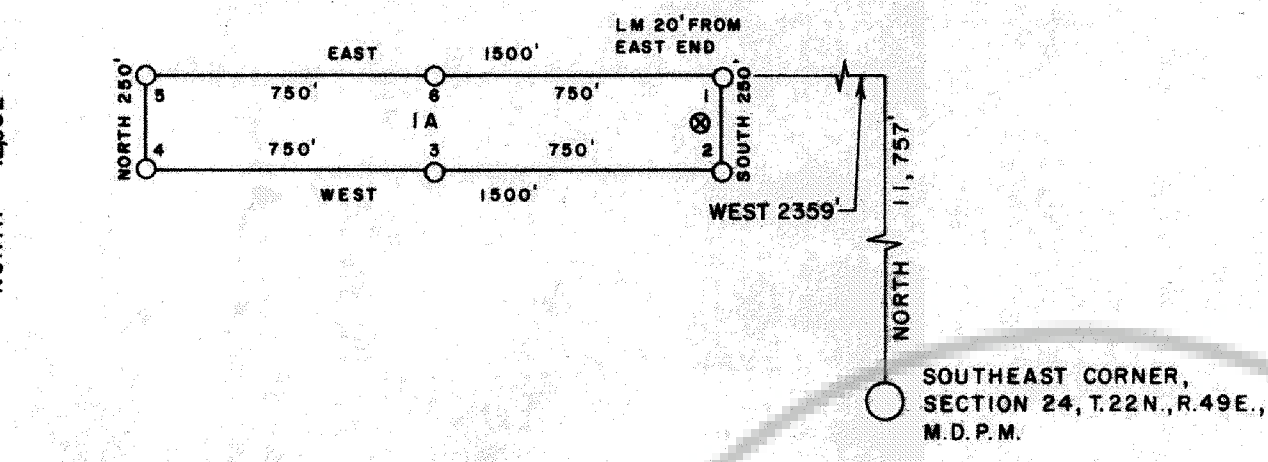


T.22 N.

SCALE - 1" = 500'

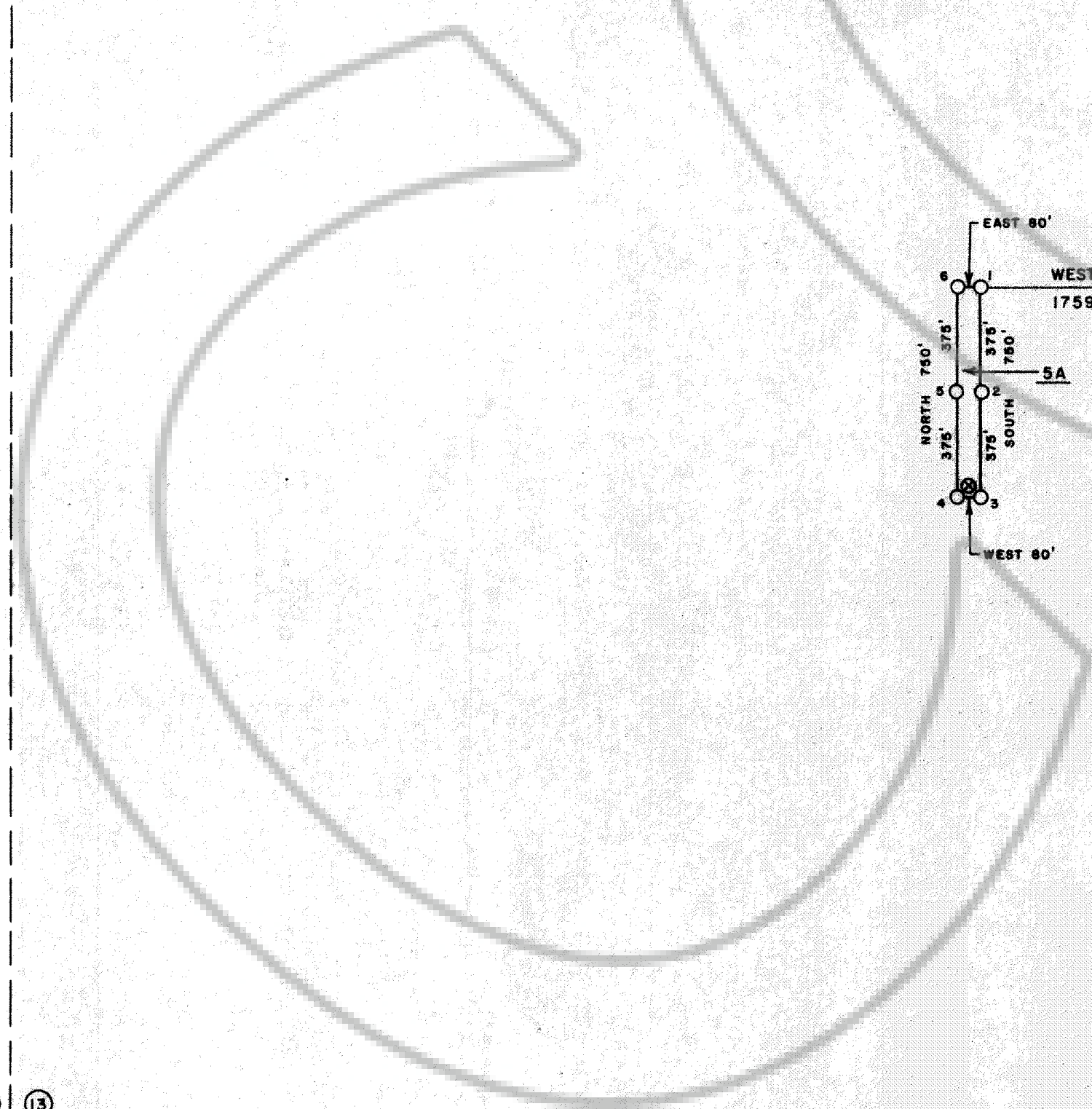
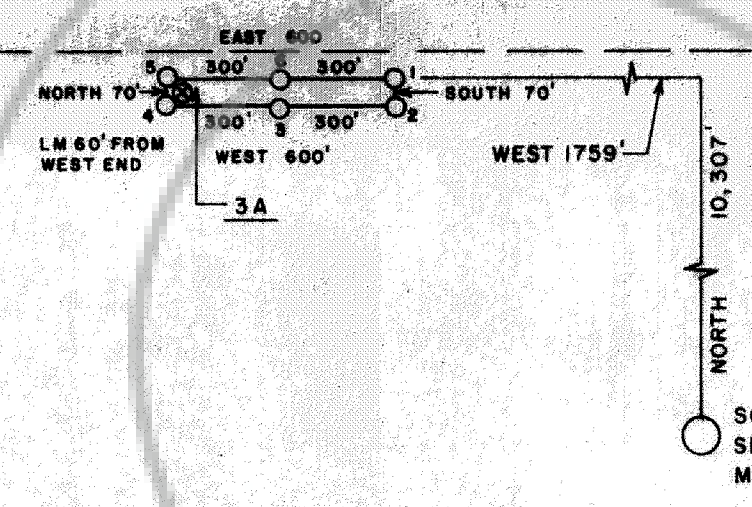


T.22 N.



⑪ | ⑫
⑭ | ⑬

⑫ | ⑦
⑬ | ⑬



LEGEND

- - INDICATES 4"x5" PLASTIC PIPE MONUMENT
- ⊙ - INDICATES 4"x5" PLASTIC PIPE LOCATION MONUMENT LOCATION MONUMENT LOCATED 10' FROM END LINE OF CLAIM UNLESS NOTED
- ⊗ - INDICATES SECTION CORNER - SECTION LINES ARE PROJECTED

LOCATION DATES

NOVEMBER 2, 1984 5A
 NOVEMBER 3, 1984 1A, 3A, 62A, 63A, 64A
 NOVEMBER 7, 1984 1447

FILED AT THE REQUEST OF **APEX SURVEYING**
 on December 17, 1984 at 59 mins past 9 A: M.
 RECORDS OF
 EUREKA COUNTY, NEVADA
 File No. 97450 M.N. REBALEATI, Recorder
 Fee \$ 70.00

MAP OF THE
JASPER LODGE MINING CLAIM
 EUREKA COUNTY, NEVADA

LOCATED BY RICHARD D. INBERG
 AGENT FOR ATLAS CORPORATION
 P.O. BOX 1207
 MOAB, UTAH 84532
 DECEMBER 3, 1984

APEX SURVEYING INC., RIVERTON, WYOMING 82531

R.49E R.50E.

② ①
① ②

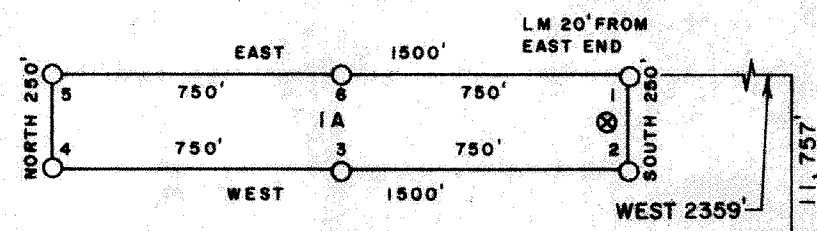
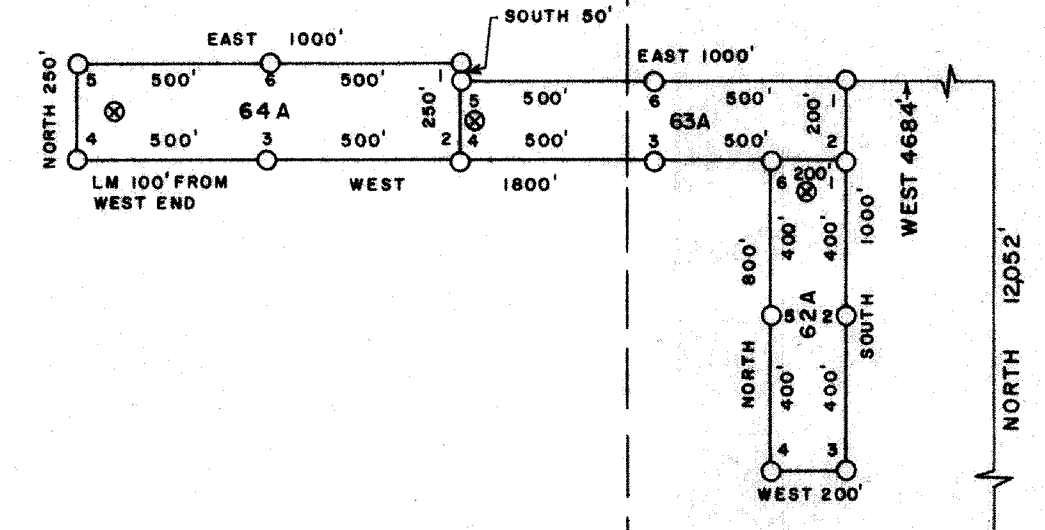
① ⑥
② ⑦

R. 50 E.

②⑥ ②⑦
③③ ③④

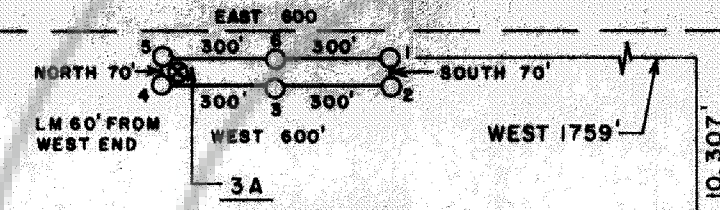
T.22 N.

T.22 N.

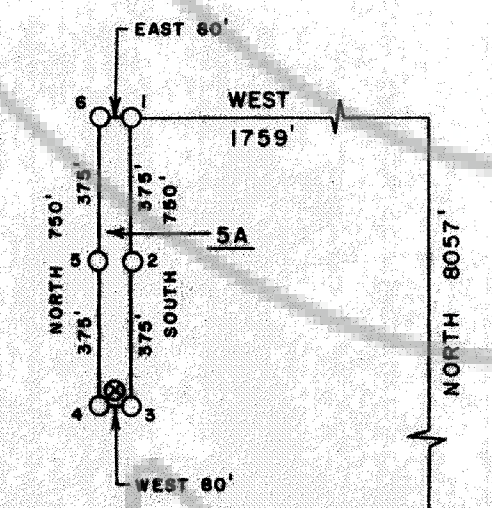


SOUTHEAST CORNER, SECTION 24, T.22N, R.49E., M.D.P.M.

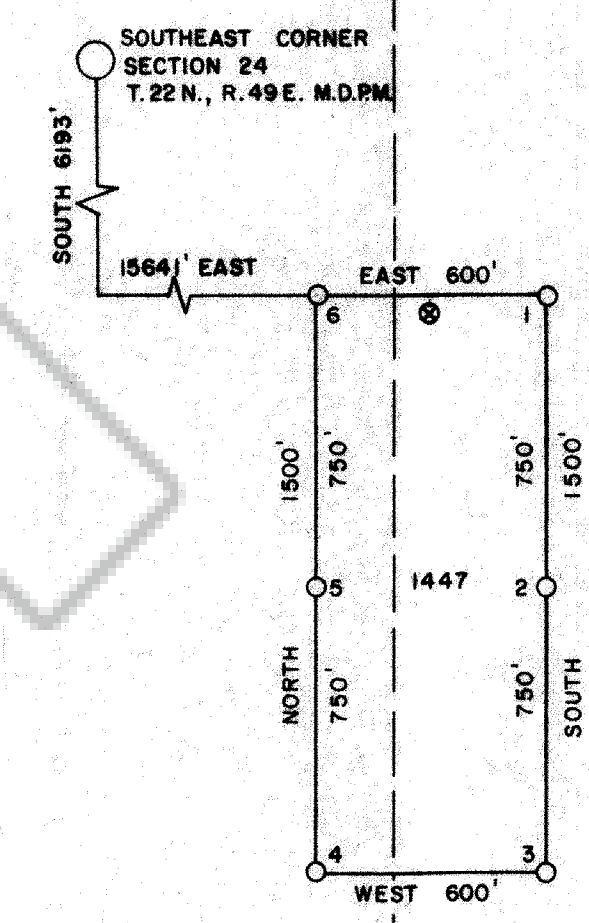
SOUTHEAST CORNER, SECTION 24, T.22N, R.49E., M.D.P.M.



SOUTHEAST CORNER, SECTION 24, T.22N, R.49E., M.D.P.M.



SOUTHEAST CORNER, SECTION 24, T.22N, R.49E., M.D.P.M.



SCALE 1" = 500'



LEGEND

- - INDICATES 4"x5" PLASTIC PIPE MONUMENT
- ⊗ - INDICATES 4"x5" PLASTIC PIPE LOCATION MONUMENT LOCATION MONUMENT LOCATED 10' FROM END LINE OF CLAIM UNLESS NOTED
- ⊗⊗ - INDICATES SECTION CORNER - SECTION LINES ARE PROJECTED

LOCATION DATES

NOVEMBER 2, 1984 5A
 NOVEMBER 3, 1984 1A, 3A, 62A, 63A, 64A
 NOVEMBER 7, 1984 1A, 4A

FILED AT THE REQUEST OF **APEX SURVEYING**
 on December 17, 1984 at 59 mins past 9 A. M.
 RECORDS OF
 EUREKA COUNTY, NEVADA M.N. REBALEATI, Recorder
 File No. 97450 Fee \$ 90.00

MAP OF THE
JASPER LODE MINING CLAIMS
 EUREKA COUNTY, NEVADA

LOCATED BY RICHARD D. INBERG
 AGENT FOR ATLAS CORPORATION
 P.O. BOX 1207
 MOAB, UTAH 84532
 DECEMBER 3, 1984

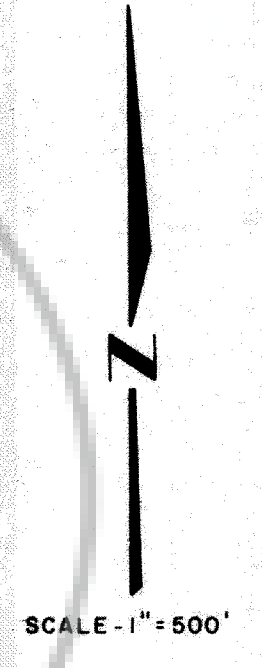
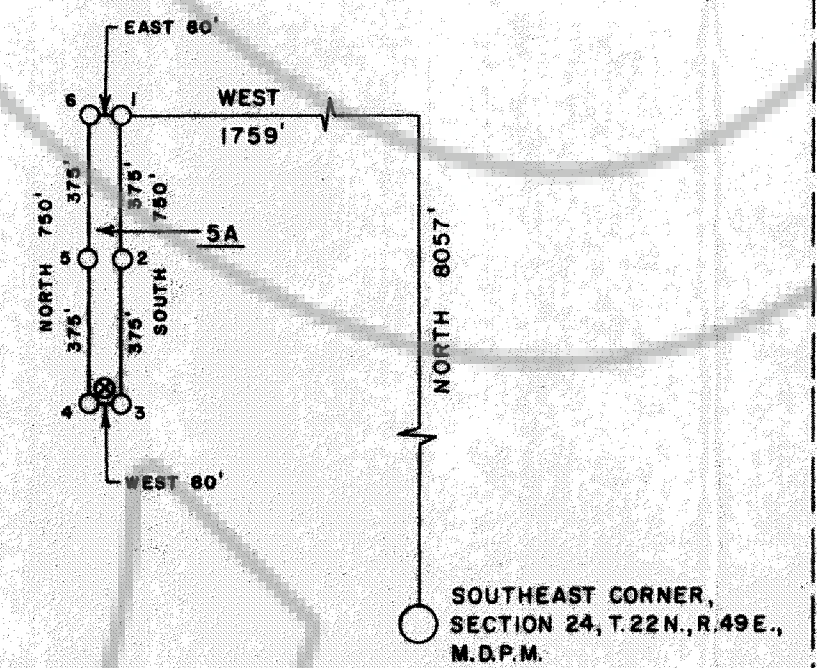
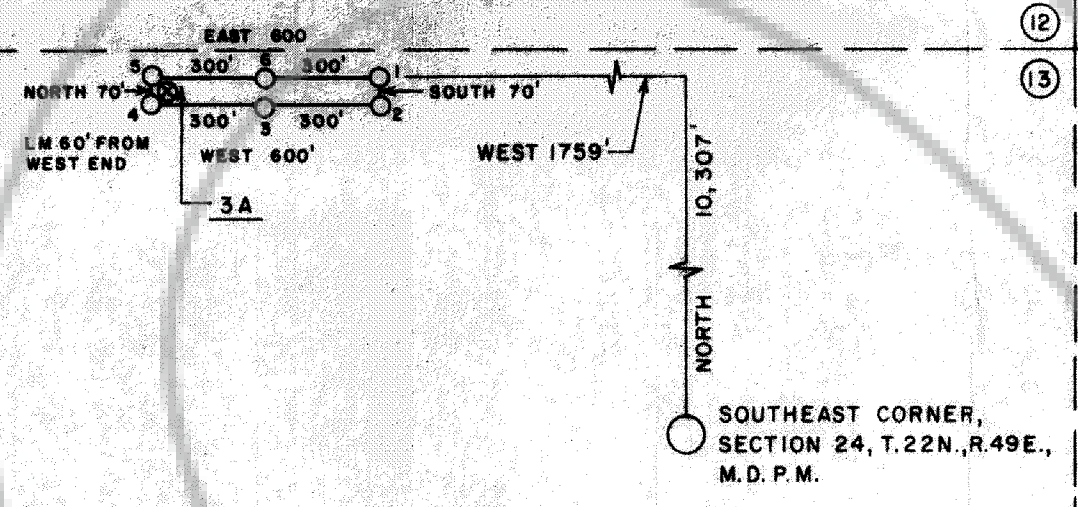
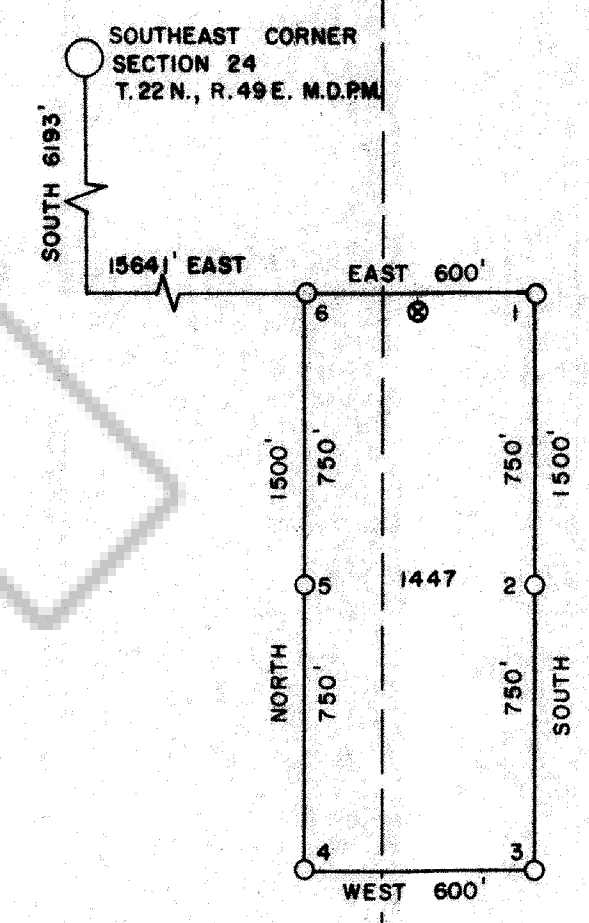
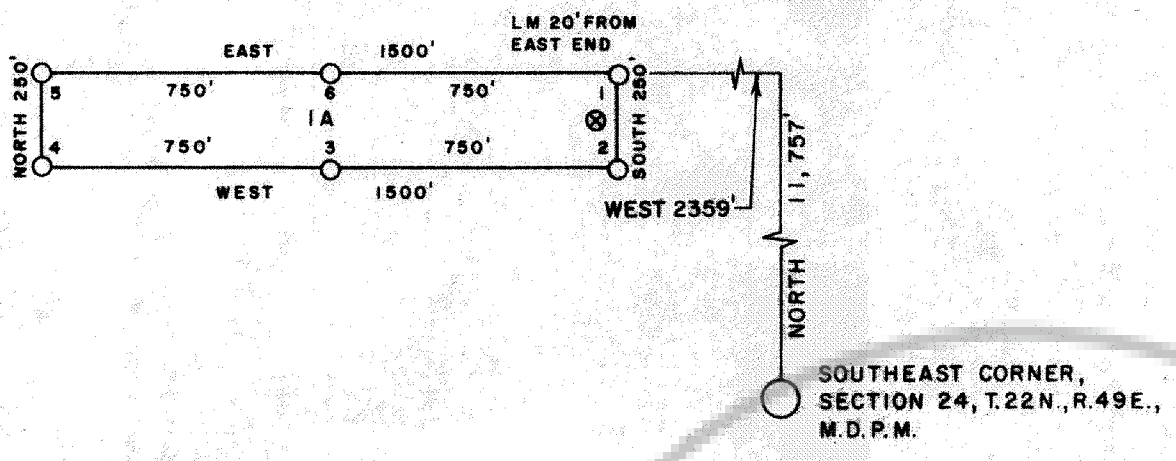
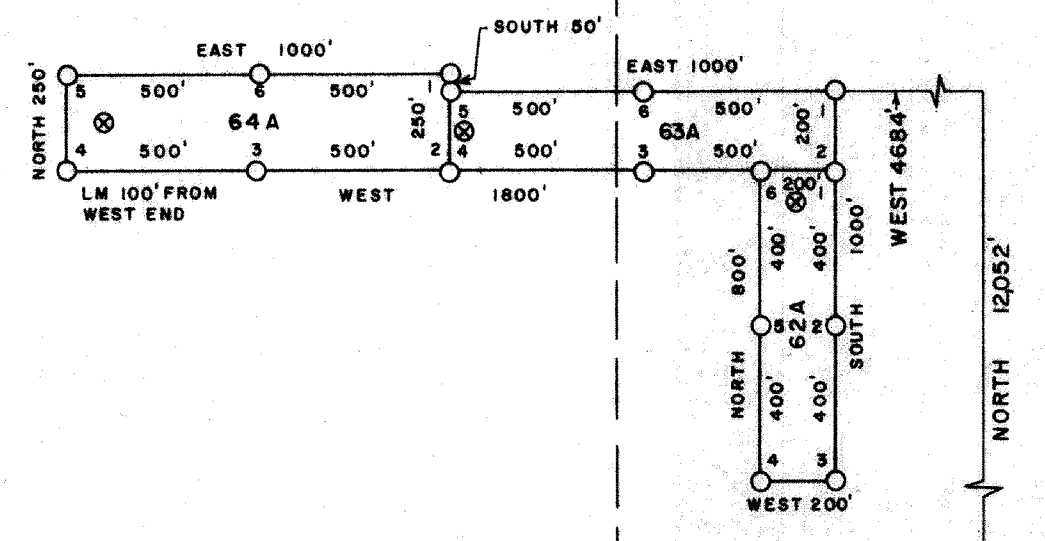
APEX SURVEYING INC., RIVERTON, WYOMING 82501

R.49E R.50E.

R. 50 E.

T.22 N.

T.22 N.



LEGEND

- - INDICATES 4"x5" PLASTIC PIPE MONUMENT
- ⊗ - INDICATES 4"x5" PLASTIC PIPE LOCATION MONUMENT LOCATION MONUMENT LOCATED 10' FROM END LINE OF CLAIM UNLESS NOTED
- ⊗ - INDICATES SECTION CORNER - SECTION LINES ARE PROJECTED

LOCATION DATES

NOVEMBER 2, 1984 5A
 NOVEMBER 5, 1984 1A, 3A, 62A, 63A, 64A
 NOVEMBER 7, 1984 1447

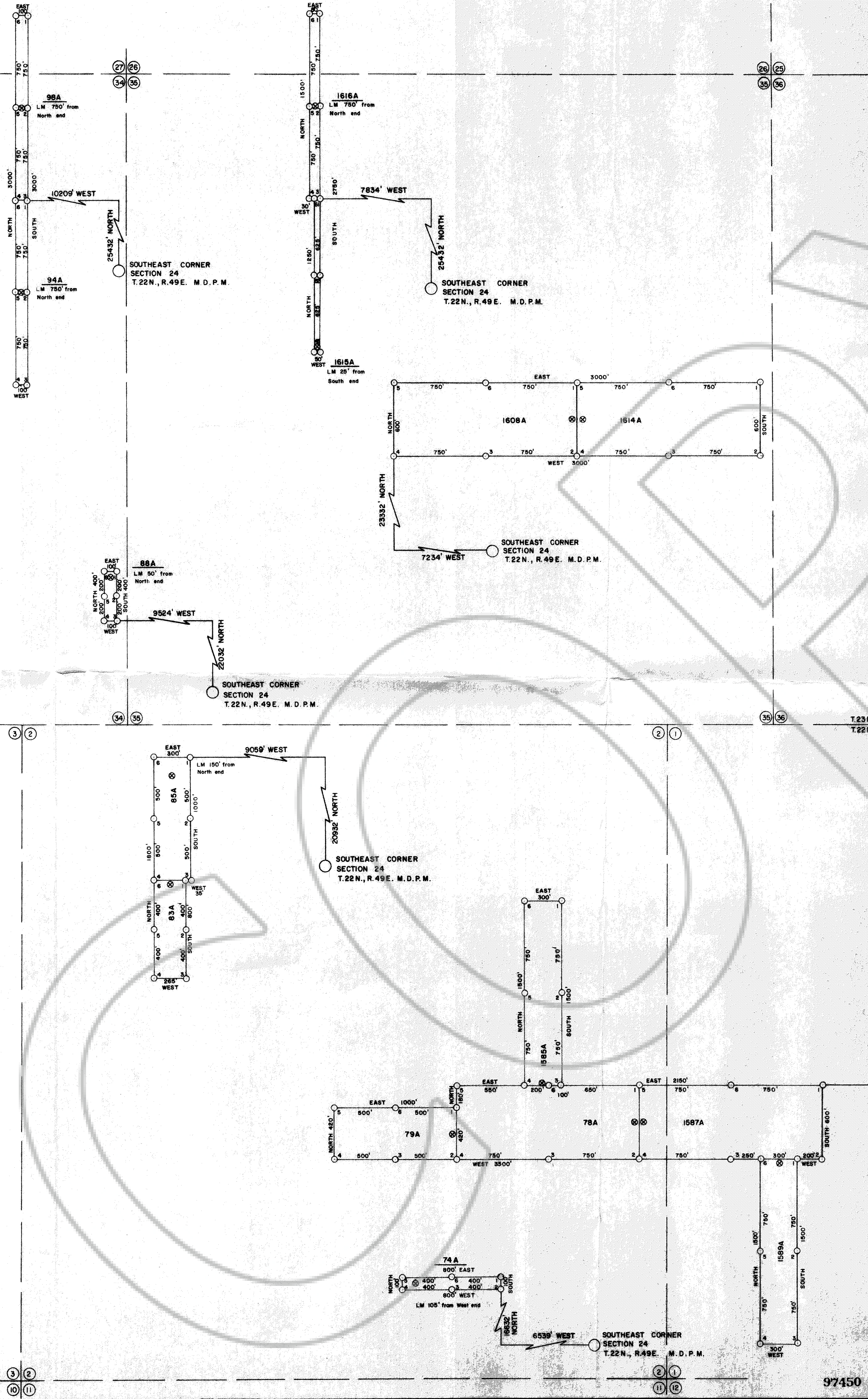
FILED AT THE REQUEST OF **APEX SURVEYING**
 on December 17, 1984 at 59 mins past 9:00 M.
 EUREKA COUNTY, NEVADA RECORDS OF
 M.N. REBALEATI, Recorder
 File No. 97450 Fee \$ 90.00

MAP OF THE
JASPER LODGE MINING CLAIMS
 EUREKA COUNTY, NEVADA

LOCATED BY RICHARD D. INBERG
 AGENT FOR ATLAS CORPORATION
 P.O. BOX 1207
 MOAB, UTAH 84532
 DECEMBER 3, 1984

APEX SURVEYING INC., RIVERTON, WYOMING 82501

R. 49 E.

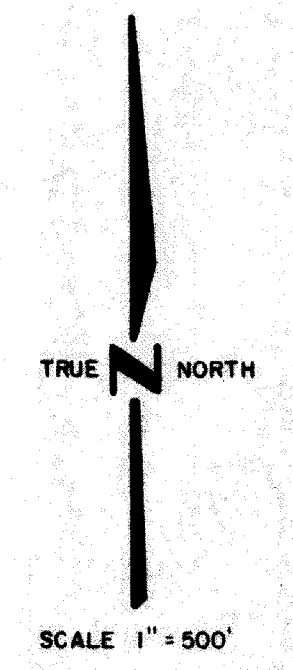


NOTE:

- INDICATES 4" X 5" PLASTIC PIPE MONUMENT
- ⊗ INDICATES 4" X 5" PLASTIC PIPE LOCATION MONUMENT
- INDICATES MONUMENTS LOCATED 10' FROM END LINE UNLESS NOTED
- ⊗ INDICATES SECTION CORNER — SECTION LINES ARE PROJECTED

LOCATION DATES:

NOVEMBER 4, 1984 74A, 1589A
 NOVEMBER 5, 1984 78A, 1587A, 1589A
 NOVEMBER 6, 1984 1608A, 1614A, 1615A, 1616A, 85A, 88A
 NOVEMBER 7, 1984 79A, 83A, 94A, 98A
 LOCATED WITHIN SECTIONS 26, 27, 34, 35 T.22N., R.49E. M.D.P.M., SECTIONS 1, 2 T.22N., R.49E. M.D.P.M.



**MAP OF THE
 JASPER LODGE MINING CLAIMS
 EUREKA COUNTY, NEVADA**

LOCATED BY RICHARD D. INBERG
 AGENT FOR ATLAS CORPORATION
 PO BOX 1207
 MOAB, UTAH 84532
 DECEMBER 3, 1984

FILED AT THE REQUEST OF **APEX SURVEYING**
 on December 17, 1984 at 59 mins past 9 A. M.
 EUREKA COUNTY, NEVADA M.N. REBALEATI Recorder
 File No. 97450 Fee \$ 240.00

97450