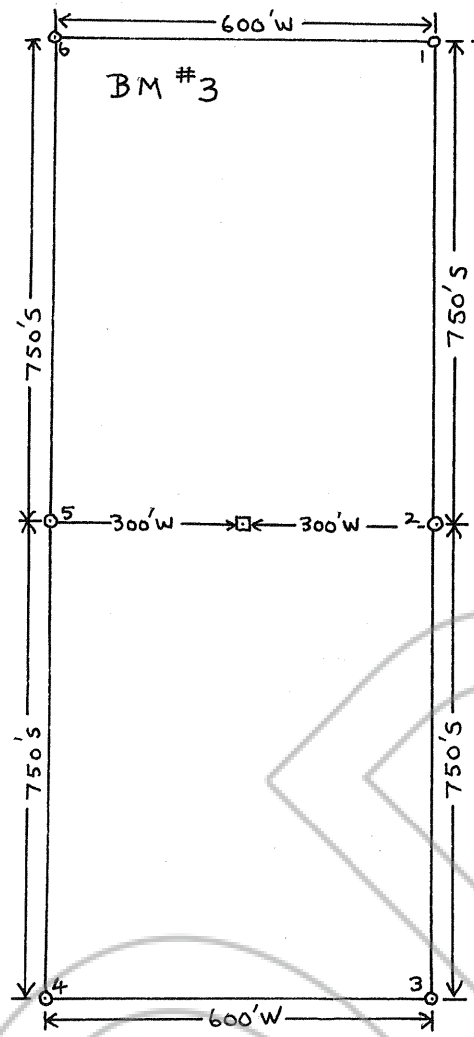
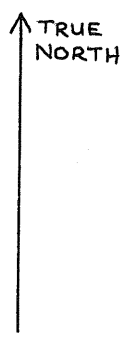


T35N.
R50E
Sec 12
N. E. CORNER
1050'S
N.T.S.



1640' W
N.T.S.

N. E. CORNER BM#3
LIES 1050'S AND
1640' W OF N. E. CORNER
Sec. 12, T35N, R50E.
WHICH WAS LOCATED IN
THE FIELD AND WAS THE
STARTING POINT OF THE
SURVEY.

- SCALE 1" = 300 FT.
- - CLAIM POST 4" x 4"
 - - SECTION CORNER
 - - LOCATION MONUMENT (4x4 WOODEN POST)

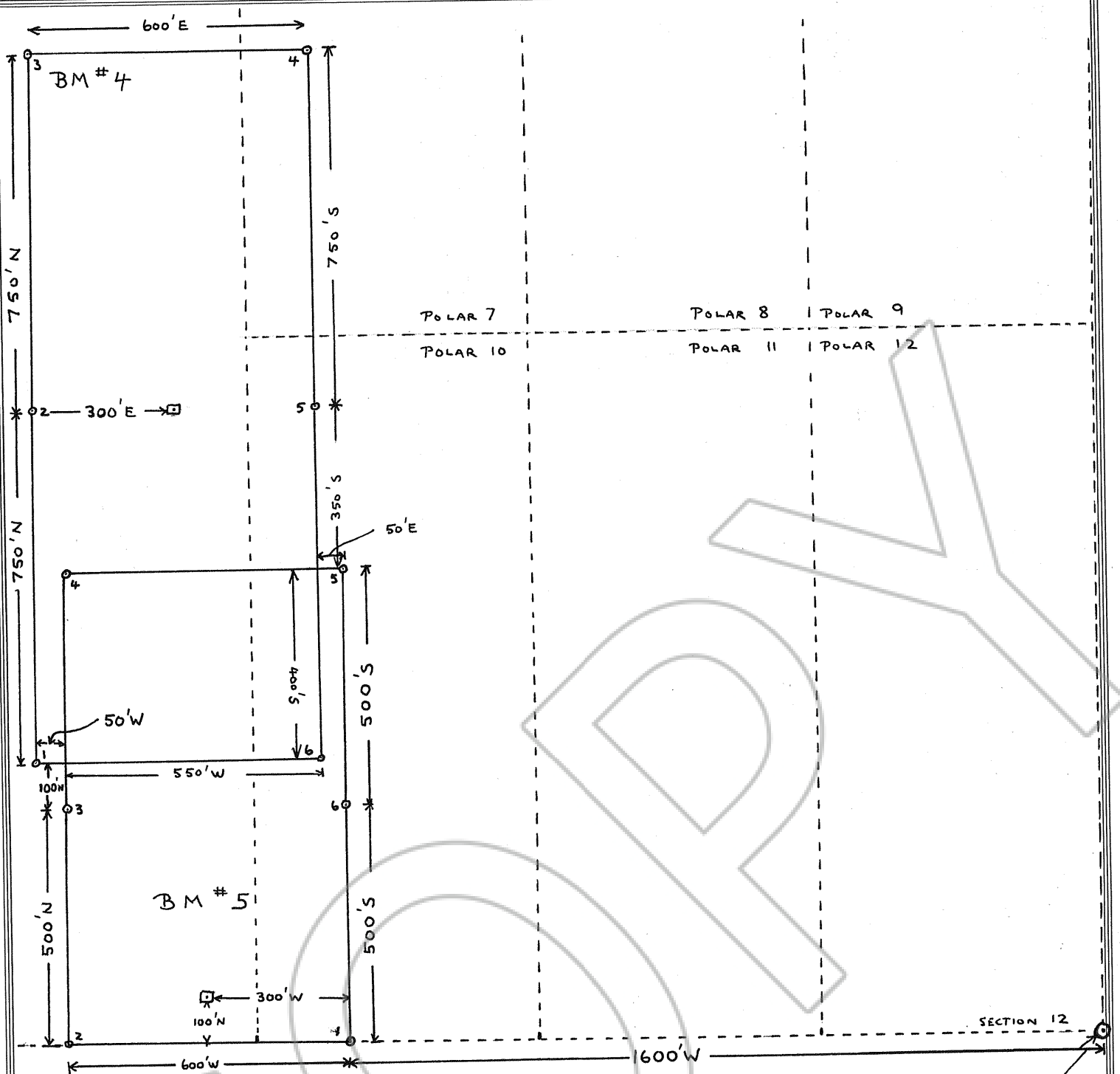
Describe here the position of the Claim Location Monument, if one is used.

Map of the BM # 3
in Section 12 Township, 35 N Range 50 E,
in the LYNN Mining District,
EUREKA County, Nevada.

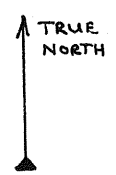
LODE Mining Claim Group,

Located on the 8TH day of NOVEMBER, 1984, by
JOHN M. HOGG AGENT FOR
Locator name and address (please print)
NICOR MINERAL VENTURES INC
1289 RIVER STREET
ELKO NV 89801

RECORDER'S STAMP
Filed
AT REQUEST OF
Nicor Mineral Ventures Inc.
84 DEC 19 A 9: 56
OFFICIAL RECORDS
EUREKA COUNTY, NEVADA
M.N. REBALEATI, RECORDER
FILE NO. 97459
FEE \$15.00



NB. POLAR # 4 THRU # 12 ARE INCORRECTLY PLOTTED ON THE M.T. PLAT. S.E. CORNER POLAR # 12 LIES AT S.E. COR. SEC. 12, T35N, R50E AS SHOWN ABOVE.



S.E. CORNER
Sec. 12.
T35N, R50E.

- SCALE 1" = 300 FT
- - CLAIM POST
 - - SECTION CORNER
 - - LOCATION MONUMENT (4x4 WOODEN POST)

Describe here the position of the Claim Location Monument, if one is used.

S. E. CORNER SEC. 12 WAS LOCATED IN THE FIELD AND WAS THE STARTING POINT OF THE SURVEY.

Map of the BM # 4 AND BM # 5 LODE Mining Claim Group,
in Section 12 Township, 35 N Range 50 E,
in the LYNN Mining District,
EUREKA County, Nevada.

Located on the 8TH day of NOVEMBER, 1984, by
JOHN M. HOGG AGENT FOR
Locator name and address (please print)

NICOR MINERAL VENTURES INC.
1289 RIVER STREET
ELKO NV 89801

RECORDER'S STAMP

Filed
AT REQUEST OF
Nicor Mineral Ventures Inc

84 DEC 19 A 9: 56

OFFICIAL RECORDS
EUREKA COUNTY, NEVADA
M.H. REBALEATI, RECORDER
FILE NO. 97459
FEE \$ 30.00