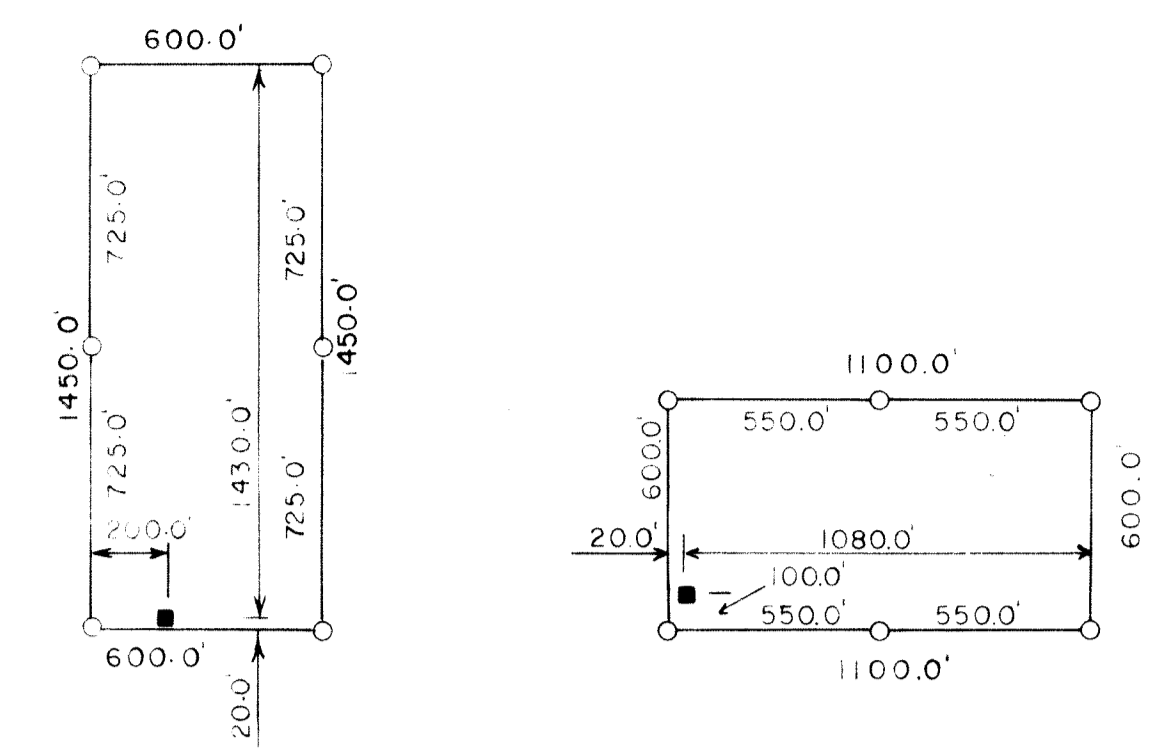
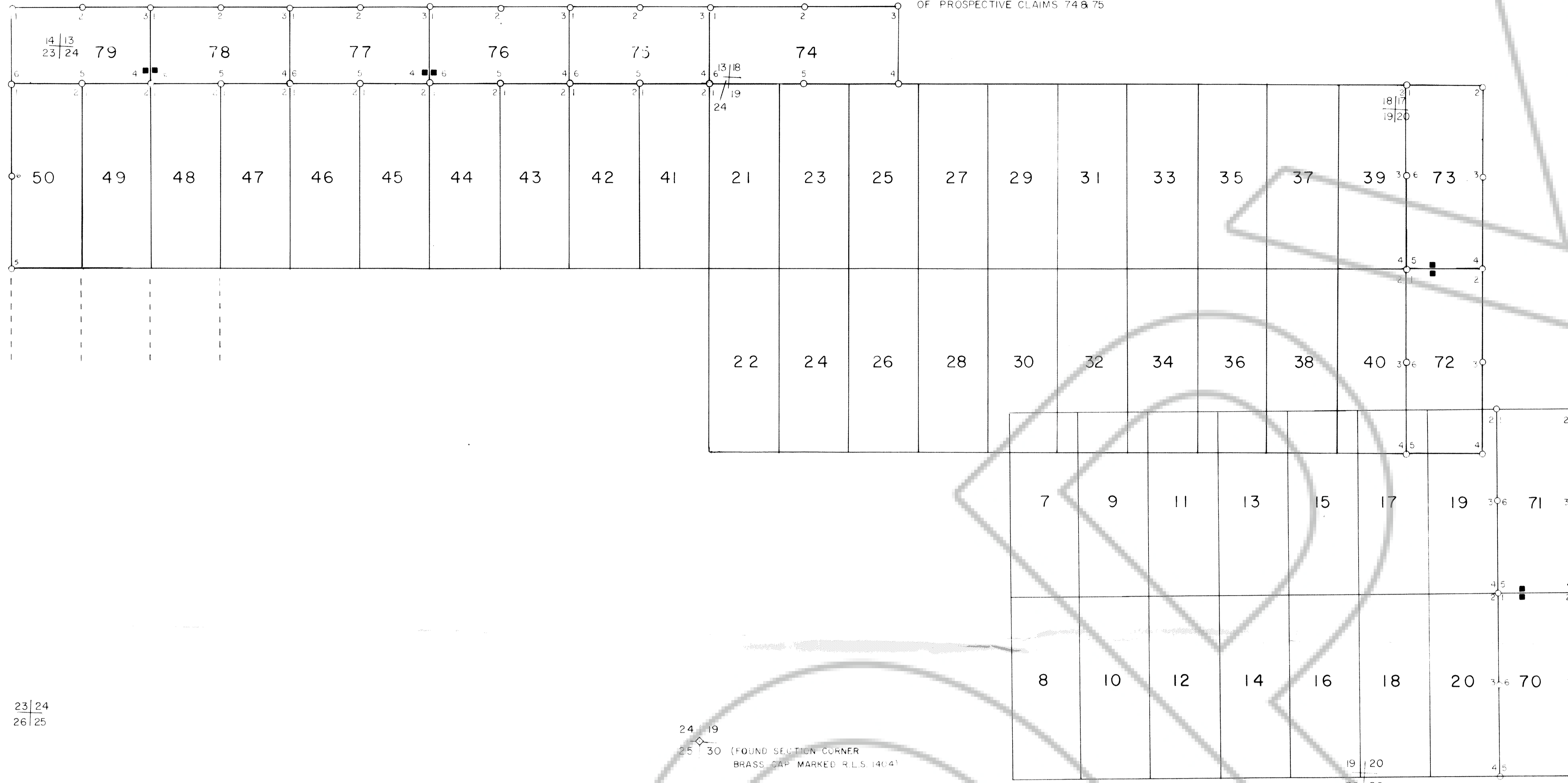


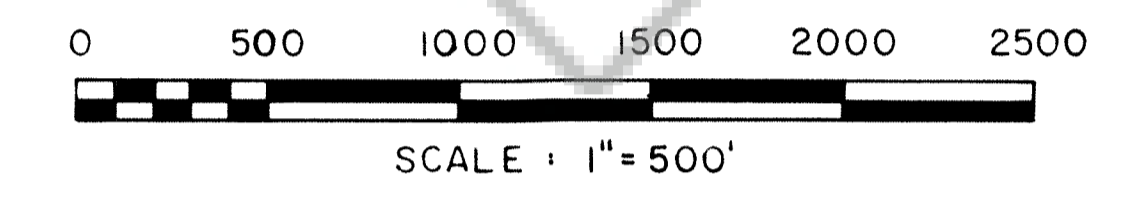
REFER TO DIAGRAM "A" FOR DIMENSIONING INFORMATION OF PROSPECTIVE CLAIMS 74 & 75



TYPICAL DIMENSIONING FOR PROSPECTIVE 70-73 LOSE CLAIMS  
TYPICAL DIMENSIONING FOR PROSPECTIVE 76-79 LOSE CLAIMS

LOCATION DATES: DECEMBER 7, 10, 1984  
MONUMENTATION COMPLETED BY: DECEMBER 10, 1984

- LEGEND
- ◇ FOUND SECTION CORNER, AS NOTED.
  - CLAIM POST - 4" DIA. x 5'-0" PVC. PIPE APPROPRIATELY MARKED FOR THE CORNER.
  - LOCATION MONUMENT - 4" DIA. x 5'-0" PVC. PIPE w/ LOCATION NOTICE.



23 | 24  
26 | 25

24 | 19  
25 | 30 (FOUND SECTION CORNER  
BRASS CAP MARKED R.L.S. 1404)

T. 36 N., R. 49 E., M.D.M.  
T. 36 N., R. 50 E., M.D.M.

T. 36 N., R. 49 & 50 E., M.D.M.  
LYNN MINING DISTRICT  
EUREKA COUNTY, NEVADA

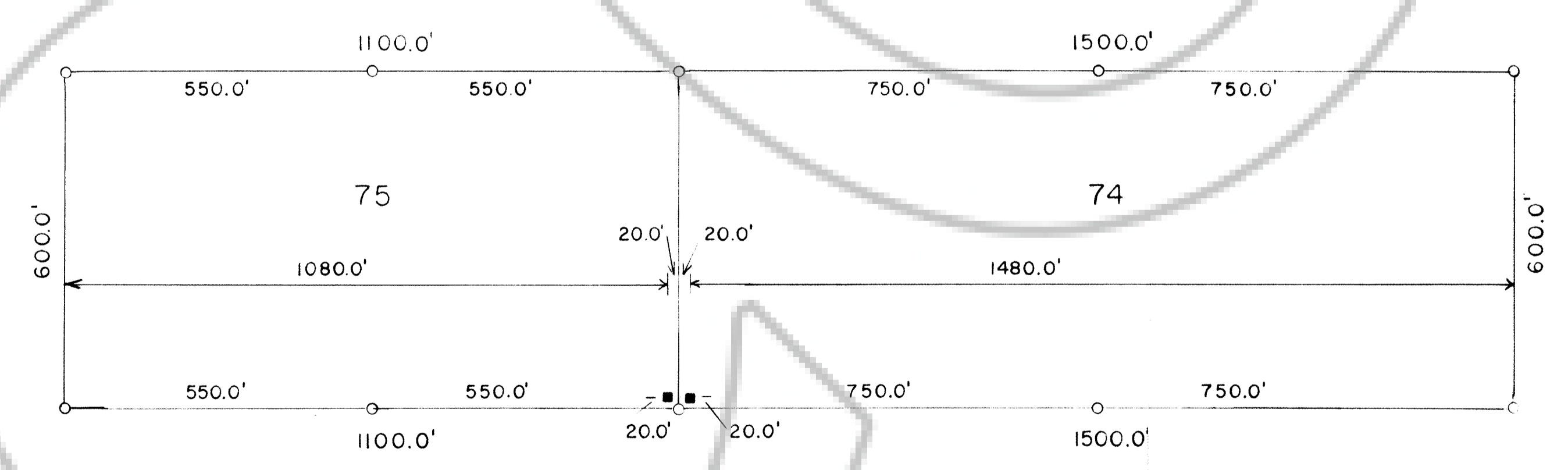
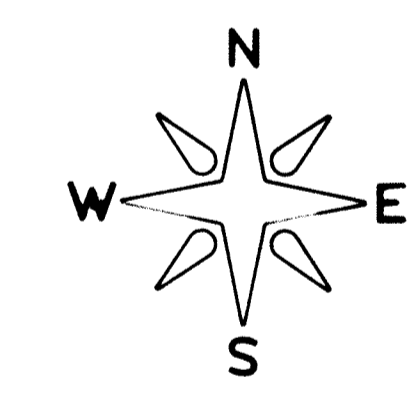
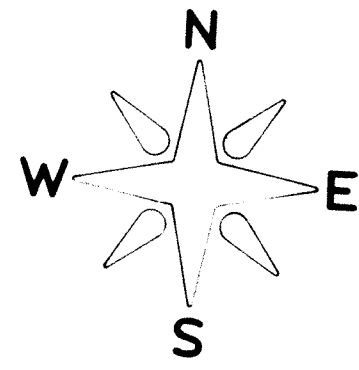


DIAGRAM "A"  
DIMENSIONING FOR PROSPECTIVE 74 & 75 LOSE CLAIMS  
SCALE: 1 INCH = 200 FEET

FILED AT THE REQUEST OF Newmont Exploration Limited  
on Dec 26 1984 at 20 mins past 11:21 AM  
EUREKA COUNTY, NEVADA RECORDS OF  
File No. 97187 M.N. RESALE/Recorder  
Fee \$ 150.00

MAP OF  
PROSPECTIVE 70-79 LOSE CLAIMS  
SITUATED IN SECTIONS 13, 14, 23, 24, T. 36 N., R. 49 E., M.D.M.  
AND SECTIONS 17, 18, 19, 20, T. 36 N., R. 50 E., M.D.M.  
FOR  
NEWMONT EXPLORATION LIMITED  
a DELAWARE CORPORATION  
P.O. BOX 368  
ELKO, NEVADA 89801

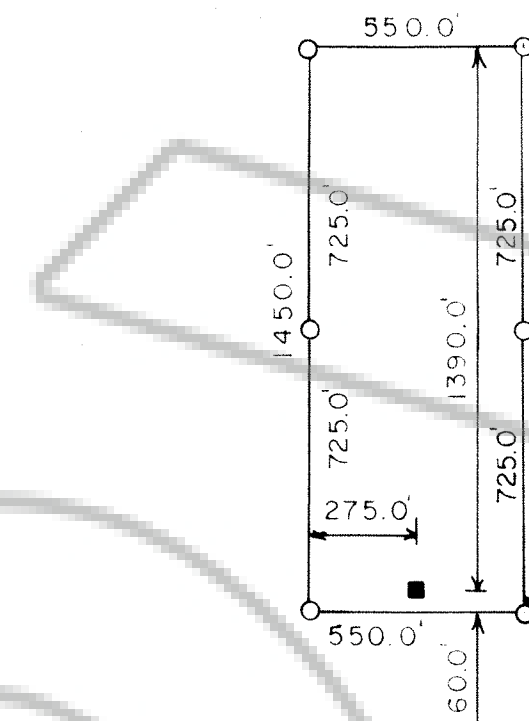
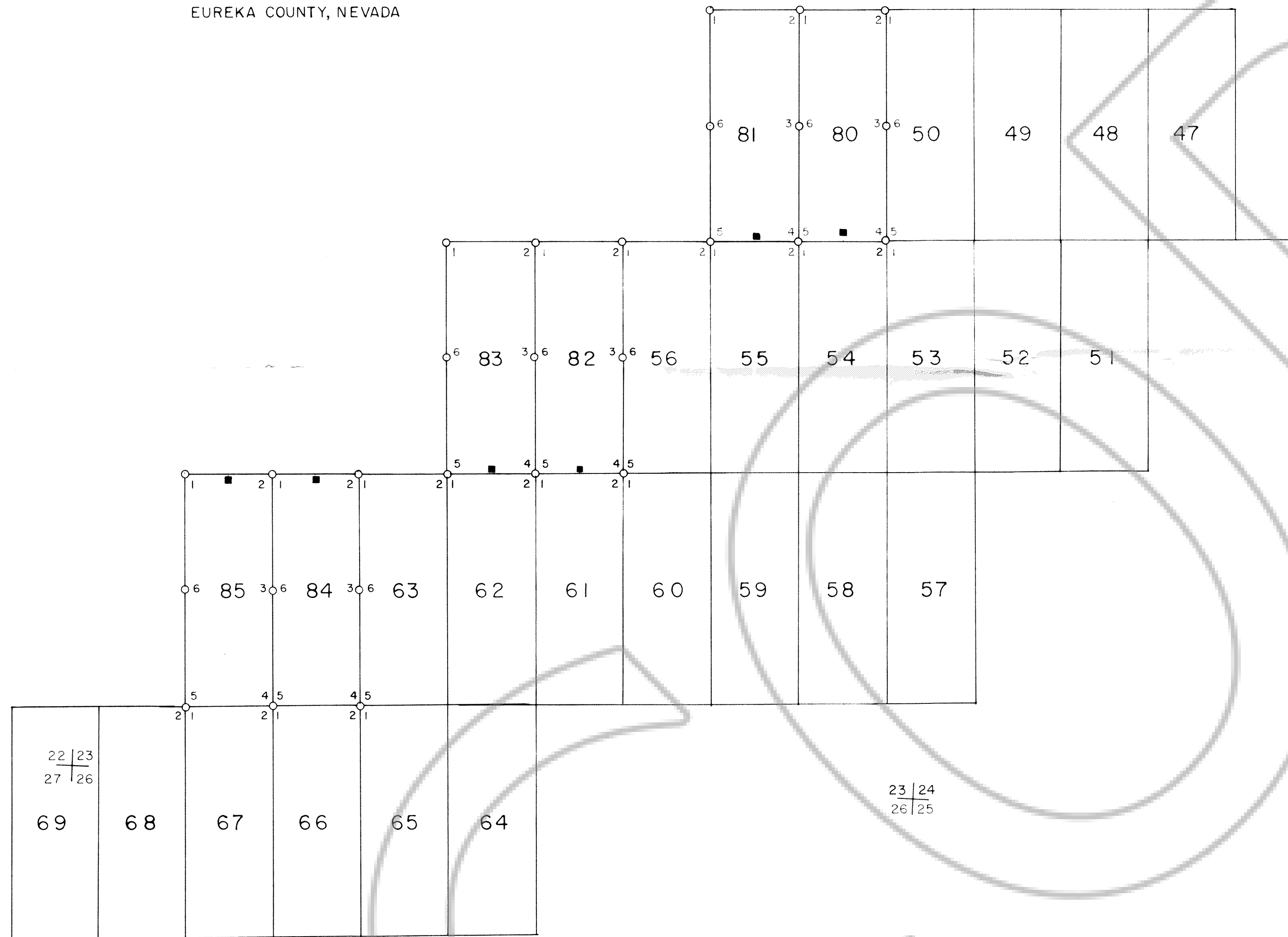
97187



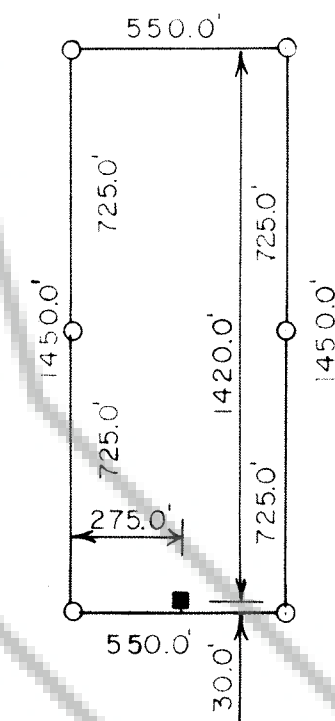
15 | 14  
22 | 23

T. 36 N., R. 49 E. M.D.M.  
LYNN MINING DISTRICT  
EUREKA COUNTY, NEVADA

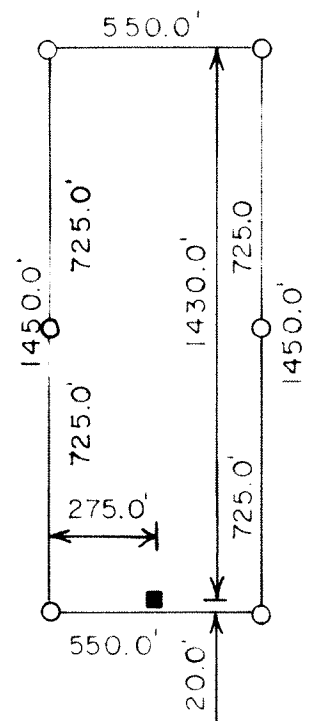
14 | 13  
23 | 24



DIMENSIONING FOR PROSPECTIVE 80 LODE CLAIM



DIMENSIONING FOR PROSPECTIVE 81 LODE CLAIM

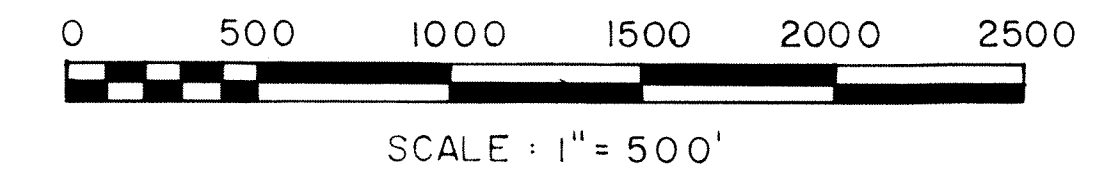


TYPICAL DIMENSIONING FOR PROSPECTIVE 82-85 LODE CLAIMS

LOCATION DATE: DECEMBER 10, 1984  
MONUMENTATION COMPLETED BY: DECEMBER 10, 1984

LEGEND

- ◊ FOUND SECTION CORNER, AS NOTED.
- CLAIM POST - 4" DIA. x 5'-0" P.V.C. PIPE APPROPRIATELY MARKED FOR THE CORNER.
- LOCATION MONUMENT - 4" DIA. x 5'-0" P.V.C. PIPE w/ LOCATION NOTICE.



FILED AT THE REQUEST OF *Newmont Exploration Limited*  
on *Dec 26* 19 *84* at *20* mins past *11 A.* M.  
EUREKA COUNTY, NEVADA RECORDS OF  
M.N. REDELEAT, Recorder  
File No. 97487 Fee \$ 90.00

24 | 19  
25 | 30 (FOUND SECTION CORNER  
BRASS CAP MARKED R.L.S. 1404)

T. 36 N., R. 49 E., M.D.M.  
T. 36 N., R. 50 E., M.D.M.

MAP OF  
PROSPECTIVE 80-85 LODE CLAIMS  
SITUATED IN SECTION 23, T.36N., R.49E., M.D.M.  
FOR  
NEWMONT EXPLORATION LIMITED  
o DELAWARE CORPORATION  
PO. BOX 368  
ELKO, NEVADA 89801