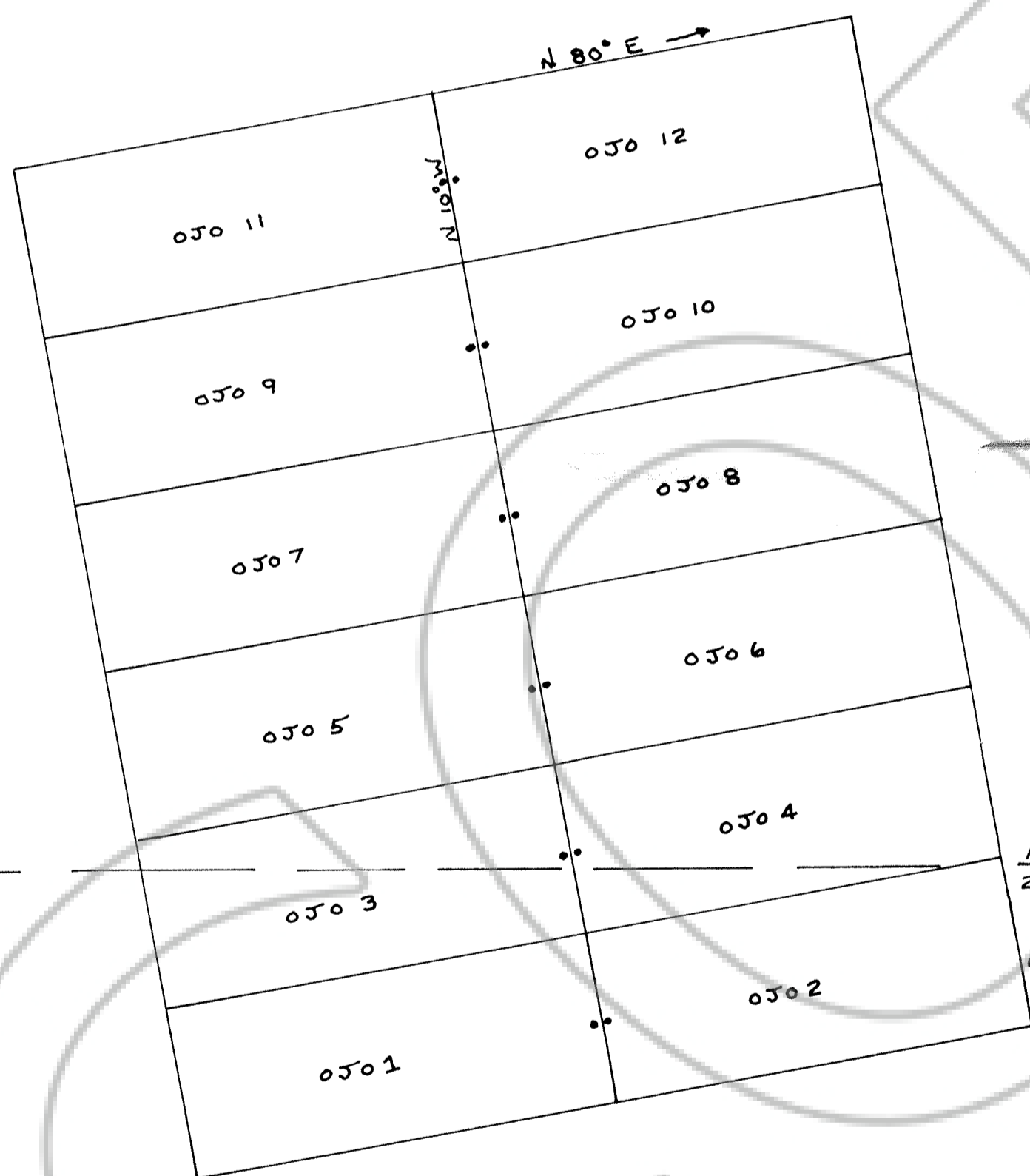


T20N R52E

SECTION 15

SECTION 14



OJO CLAIM GROUP
 SEC. 15, 22, T20N, R52E
 EUREKA COUNTY, NEV.
 SCALE: 1" = 500'
 LOCATED JAN. 24, 1985

LOCATOR
 RANGER INC.
 P.O. BOX 415
 EUREKA, NEV.
 89316

FILED AT THE REQUEST OF Ranger, Inc
 on January 31, 1985 at 30 mins past 4 P.M.
 EUREKA COUNTY, NEVADA M.N. REBALEATI, Recorder
 File No. 98427 Fee \$ 180.00

SECTION 22

SECTION 23

| | | |
|--------------------------------------|----------------------------|----------------|
| OJO CLAIMS EUREKA, NEV. | | |
| SCALE: 1" = 500' | APPROVED BY: D.G. REITH | DRAWN BY |
| DATE: JAN 28, 1985 | | REVISED |
| RANGER INC. BOX 415, EUREKA, NEV. | | |
| | | DRAWING NUMBER |

16 15
21 22

15 14
22 23