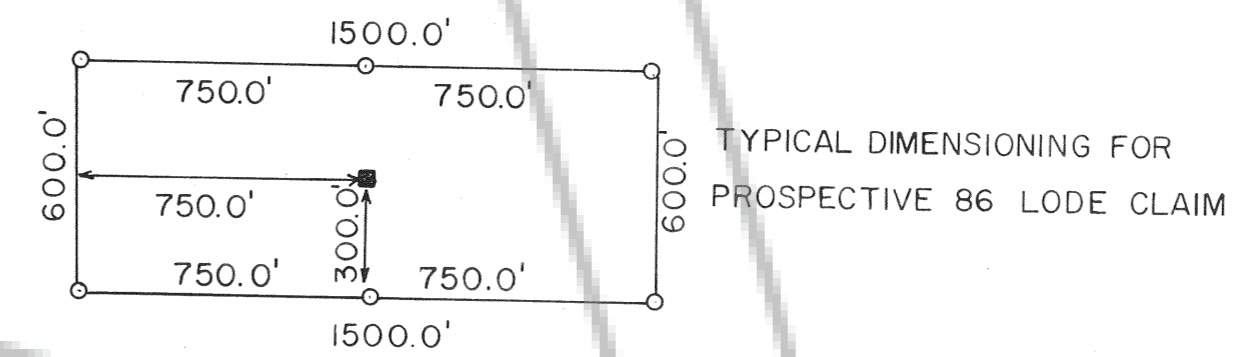


NOTE: CLAIMS NUMBERED 1-8 ARE PROSPECTIVE CLAIMS

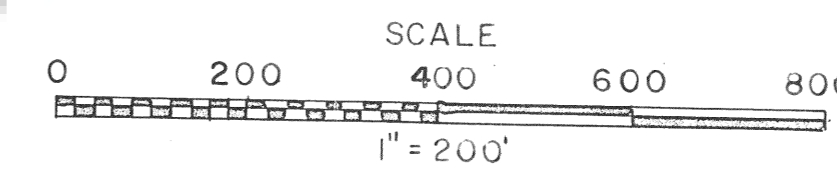


LOCATION DATE: JANUARY 25, 1985

MONUMENTATION COMPLETED: JANUARY 25, 1985

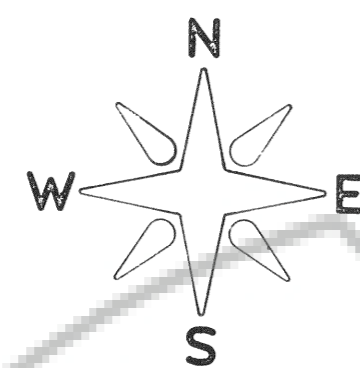
LEGEND

- ◇ FOUND SECTION CORNER, AS NOTED
- CLAIM POST - 4" DIA. x 5'-0" P.V.C. PIPE APPROPRIATELY MARKED FOR THE CORNER
- LOCATION MONUMENT - 4" DIA. x 5'-0" P.V.C. PIPE w/ LOCATION NOTICE



T.36N R49E MDM  
T.36N R50E MDM

SCALED BEARING & DISTANCE: N44°20'E, 1630 FEET



T36N R50E  
M.D.M.  
LYNN MINING DISTRICT  
EUREKA COUNTY, NEVADA

24 19 (FOUND SECTION CORNER  
25 30 BRASS CAP MARKED R.L.S. 1404)

19 | 20  
30 | 29

FILED AT THE REQUEST OF Newmont Exploration, Ltd  
on February 12, 1985, at 32 mins. past 10 A.M.  
EUREKA COUNTY, NEVADA, RECORDS OF  
M.N. REDALEATI, Recorder  
File No. 98529 Fee 2.15.00

MAP OF  
PROSPECTIVE 86 LODE CLAIM  
SITUATED IN SECTION 19, T36N R50E M.D.M.  
FOR  
NEWMONT EXPLORATION LIMITED  
A DELAWARE CORPORATION  
P.O. BOX 368  
ELKO, NEVADA, 89801