

ANTELOPE VALLEY CLAIMS (A.V.)
 EUREKA CO., NV
 4-30-85

R 51 E

30

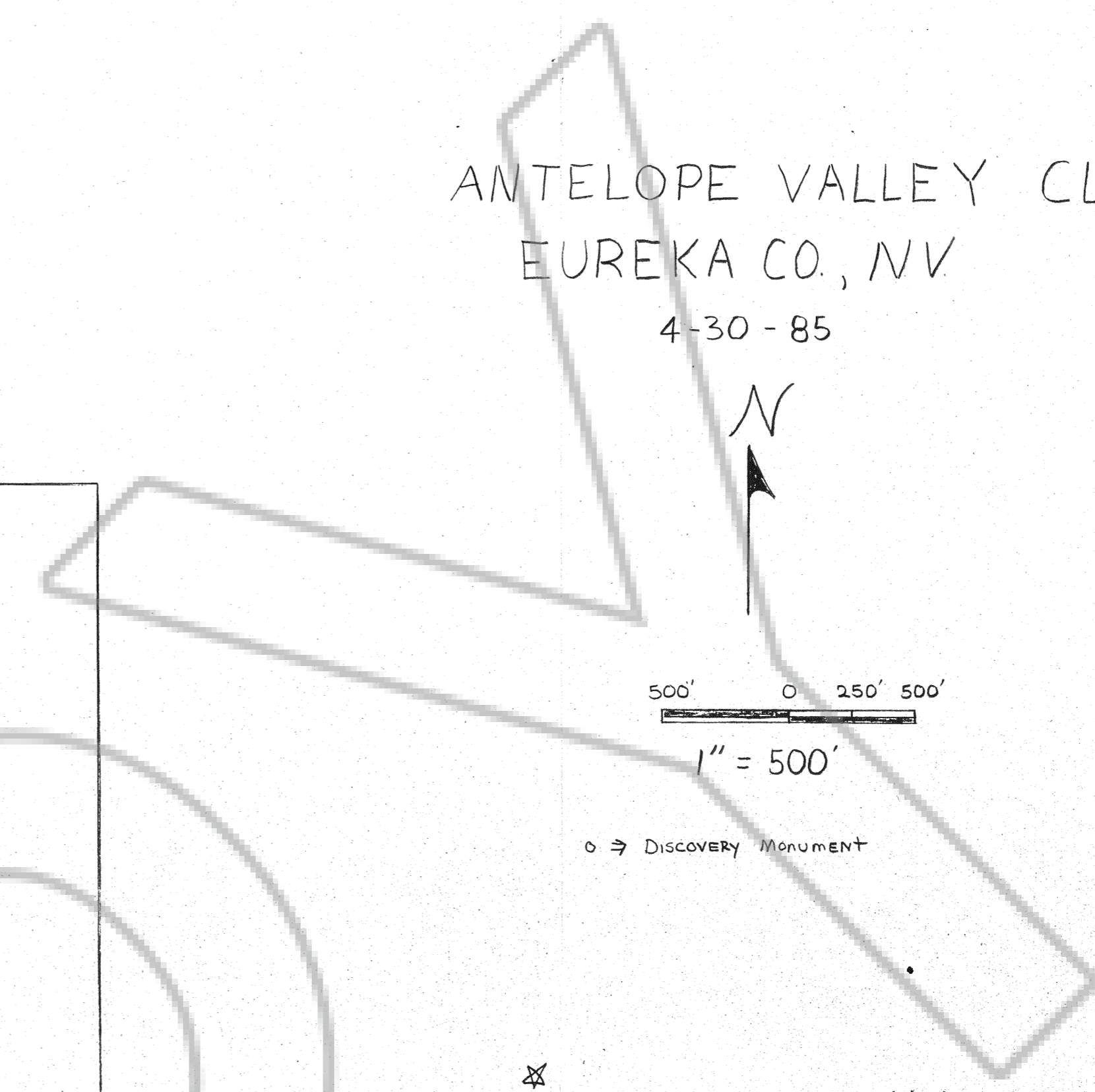
29

A.V.	A.V.	A.V.	A.V.	A.V.	A.V.
1	3	5	7	9	21
○ A.V.	○ A.V.	○ A.V.	○ A.V.	○ A.V.	○ A.V.
2	4	6	8	10	22
A.V.	A.V.	A.V.	A.V.	A.V.	A.V.
11	13	15	17	19	23
○ A.V.	○ A.V.	○ A.V.	○ A.V.	○ A.V.	○ A.V.
12	14	16	18	20	24
○ A.V.	○ A.V.	○ A.V.	○ A.V.	○ A.V.	○ A.V.
30	29	28	27	26	25

31

32

T19N



* A.V. claims (1-30) located
 in Eureka Co. Nevada UNSURVEYED
 SECTIONS 29, 30, 31, 32 T19N, 51E

FILED AT THE REQUEST OF Lacana Gold Inc.
 on May 2 1985 at 11:22 mins. past 4 P. M.
 RECORDS OF
 EUREKA COUNTY, NEVADA M.N. REBALEATI, Recorder
 File No. 98892 Fee \$ 450.00