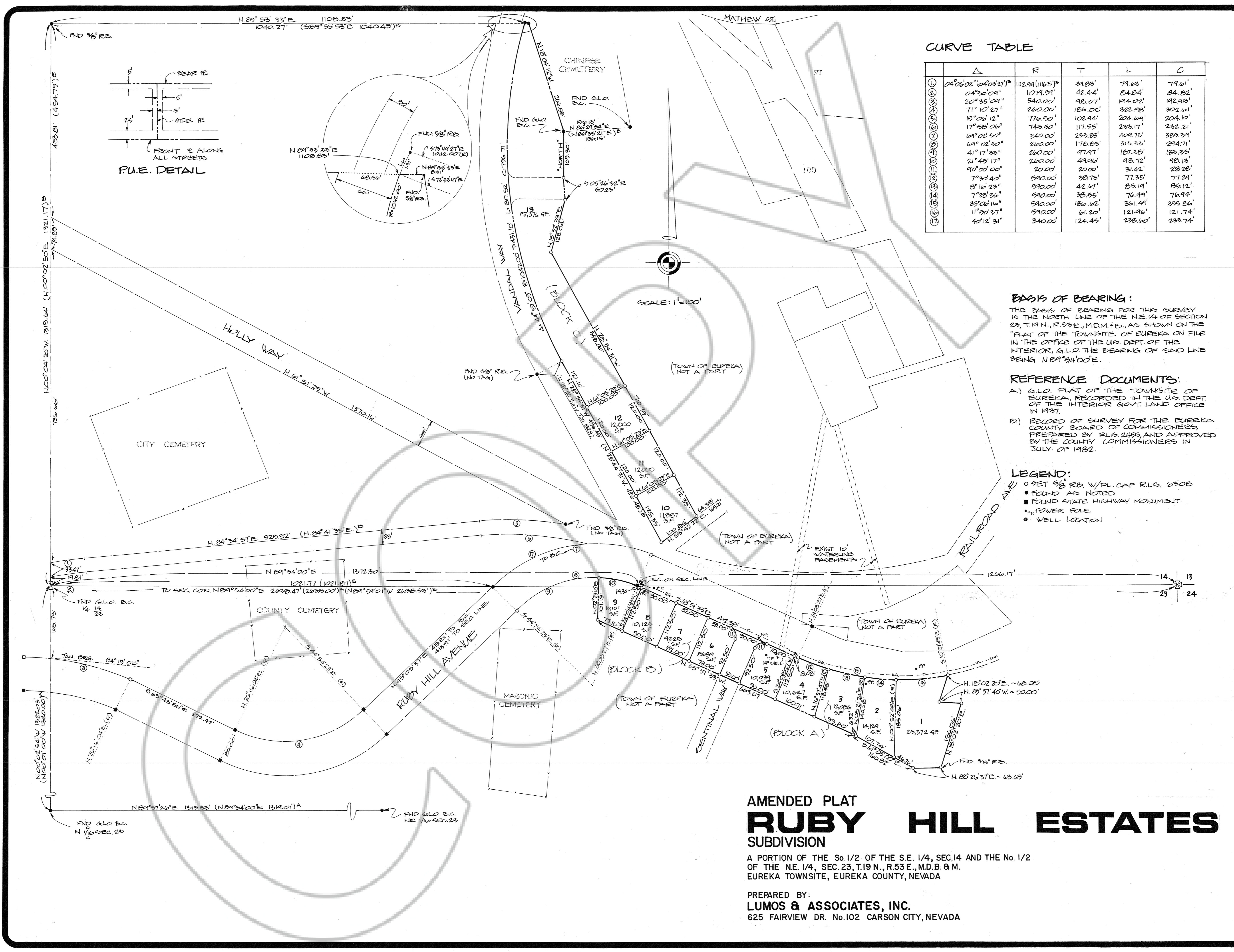


DRAWING NUMBER
SAFECO PRODUCTS • NEW HAVEN, CONNECTICUT
RECORDED BY PART NUMBER 6551

DRAWING NUMBER
SAFECO PRODUCTS • NEW HAVEN, CONNECTICUT
RECORDED BY PART NUMBER 6551

DRAWING NUMBER
98941
SAFECO PRODUCTS • NEW HAVEN, CONNECTICUT
RECORDED BY PART NUMBER 6551

DRAWING NUMBER
Submitted
Ruby Hill
SAFECO PRODUCTS • NEW HAVEN, CONNECTICUT
RECORDED BY PART NUMBER 6551



Δ	R	T	L	C
04°06'02" (04°05'21") ^B	112.54 (116.5) ^B	34.83'	79.63'	79.61'
04°20'09"	1079.59'	42.44'	84.84'	84.82'
20°35'09"	540.00'	98.07'	194.02'	192.98'
15°10'27"	260.00'	186.05'	382.98'	302.61'
15°06'12"	776.50'	102.94'	204.69'	204.10'
17°08'06"	743.50'	117.55'	233.17'	232.21'
69°02'50"	340.00'	233.88'	409.75'	383.39'
69°02'50"	260.00'	178.85'	315.33'	294.71'
41°17'33"	260.00'	97.97'	187.38'	183.13'
21°45'17"	260.00'	49.96'	98.72'	98.13'
90°00'00"	20.00'	20.00'	31.42'	28.26'
79°30'40"	590.00'	38.73'	77.35'	77.29'
8°16'23"	590.00'	42.41'	85.19'	85.12'
7°28'36"	590.00'	38.55'	76.99'	76.94'
35°00'16"	590.00'	186.62'	361.44'	355.86'
11°00'37"	590.00'	61.20'	121.96'	121.74'
40°12'31"	340.00'	124.45'	238.60'	233.74'

BASIS OF BEARING:
THE BASIS OF BEARING FOR THIS SURVEY IS THE NORTH LINE OF THE N.E. 1/4 OF SECTION 23, T.19 N., R. 53 E., M.D.M. 8 B., AS SHOWN ON THE "PLAT OF THE TOWNSITE OF EUREKA ON FILE IN THE OFFICE OF THE U.S. DEPT. OF THE INTERIOR, G.L.O. THE BEARING OF SAID LINE BEING N 89° 34' 00" E.

REFERENCE DOCUMENTS:
A.) G.L.O. PLAT OF THE TOWNSITE OF EUREKA, RECORDED IN THE U.S. DEPT. OF THE INTERIOR GOV'T. LAND OFFICE IN 1937.
B.) RECORD OF SURVEY FOR THE EUREKA COUNTY BOARD OF COMMISSIONERS, PREPARED BY RLS 2455, AND APPROVED BY THE COUNTY COMMISSIONERS IN JULY OF 1982.

LEGEND:
○ SET 3/8" R.D. V/PL. CAP RLS. 6308
● FOUND AS NOTED
■ FOUND STATE HIGHWAY MONUMENT
PP POWER POLE
● WELL LOCATION

AMENDED PLAT RUBY HILL ESTATES SUBDIVISION

A PORTION OF THE So. 1/2 OF THE S.E. 1/4, SEC. 14 AND THE No. 1/2 OF THE N.E. 1/4, SEC. 23, T.19 N., R. 53 E., M.D.B. 8 M. EUREKA TOWNSITE, EUREKA COUNTY, NEVADA

PREPARED BY:
LUMOS & ASSOCIATES, INC.
625 FAIRVIEW DR. No. 102 CARSON CITY, NEVADA

DRAWING NUMBER

SAFECO PRODUCTS • NEW HOPE, MINNESOTA
RECORDER BY PART NUMBER 0891

DRAWING NUMBER

SAFECO PRODUCTS • NEW HOPE, MINNESOTA
RECORDER BY PART NUMBER 0891

DRAWING NUMBER
98941

SAFECO PRODUCTS • NEW HOPE, MINNESOTA
RECORDER BY PART NUMBER 0891

DRAWING NUMBER
Subdivision
Amended vicinity
Ruby Hill

SAFECO PRODUCTS • NEW HOPE, MINNESOTA
RECORDER BY PART NUMBER 0891

OWNER'S CERTIFICATE:

KNOWN ALL MEN BY THESE PRESENTS, THAT EUREKA COUNTY, THE UNDERSIGNED, BEING OWNERS OF A PORTION OF THE S.E. 1/4 SECTION 14, AND THE N.E. 1/4 SECTION 23, T.19 N., R.53 E., M.D.B. & M. DO HEREBY CONSENT TO THE PREPARATION AND FILING OF THIS MAP, THAT THEY DO HEREBY OFFER WITHOUT RESERVATION FOR STREET AND PUBLIC UTILITIES PURPOSES ALL THE AREAS Delineated FOR SUCH PURPOSES ON THIS MAP IN WITNESS WHEREOF WE HAVE HERETO SET OUR HANDS THE _____ DAY OF _____, 1985.

David A. Castano

CHAIRMAN, EUREKA COUNTY COMMISSION

Joan Shangle

ATTYST: CLERK, EUREKA COUNTY

WATER RESOURCES APPROVAL:

THIS FINAL MAP IS APPROVED BY THE DIVISION OF WATER RESOURCES OF THE DEPARTMENT OF CONSERVATION AND NATURAL RESOURCES CONCERNING WATER QUANTITY, SUBJECT TO REVIEW OF APPROVAL ON FILE IN THIS OFFICE.

Fugh Ricci

DIVISION OF WATER RESOURCES

1 FEB 85

DATE

HEALTH DIVISION APPROVAL:

THIS FINAL MAP IS APPROVED BY THE HEALTH DIVISION OF THE DEPARTMENT OF HUMAN RESOURCES CONCERNING SEWAGE DISPOSAL, WATER POLLUTION, WATER QUALITY, AND WATER SUPPLY FACILITIES IN ACCORDANCE WITH NEVADA REVISED STATUTES THIS APPROVAL PREDICATES COMMUNITY WATER SUPPLY AND COMMUNITY SEWAGE DISPOSAL.

James C. Maston

HEALTH DIVISION

2/6/85

DATE

UTILITY APPROVALS:

THIS FINAL MAP AND THE EASEMENTS SHOWN ON THIS PLAT HAVE BEEN CHECKED AND APPROVED BY THE UNDERSIGNED.

D. J. Coube

NEVADA BELL

2/12/85

J. R. Roberts

MT WHEELER POWER, INC.

APPROVAL EUREKA COUNTY PLANNING COMMISSION:

AT A REGULAR MEETING OF THE EUREKA COUNTY PLANNING COMMISSION, STATE OF NEVADA, HELD ON THE _____ DAY OF _____, 1985, THIS MAP WAS APPROVED FOR SUBDIVISION PURPOSES PURSUANT TO N.R.S. CHAPTER 218.

Roberta Namale

CHAIRMAN, EUREKA COUNTY PLANNING COMMISSION

Joan Shangle

ATTYST: CLERK, EUREKA COUNTY

APPROVAL EUREKA COUNTY COMMISSIONER'S

AT A REGULAR MEETING OF THE BOARD OF COUNTY COMMISSIONERS OF EUREKA COUNTY, STATE OF NEVADA, HELD ON THE _____ DAY OF _____, 1985, THIS MAP WAS DULY AND REGULARLY APPROVED FOR SUBDIVISION PURPOSES PURSUANT TO N.R.S. CHAPTER 218.

David A. Castano

CHAIRMAN, EUREKA COUNTY COMMISSION

Joan Shangle

ATTYST: CLERK, EUREKA COUNTY

SURVEYOR'S CERTIFICATE:

I, LESTER A. PHILIPPI, A REGISTERED LAND SURVEYOR IN THE STATE OF NEVADA, CERTIFY THAT:

- 1) THIS IS A TRUE AND ACCURATE REPRESENTATION OF THE LANDS SURVEYED UNDER MY SUPERVISION AT THE INSTANCE OF _____
- 2) THE LANDS SURVEYED LIE WITHIN SECTIONS 14 & 23, T.19 N., R.53 E., M.D.B. & M. AND THE SURVEY WAS COMPLETED ON JANUARY 31, 1985.
- 3) THIS PLAT COMPLIES WITH APPLICABLE STATE STATUTES AND ANY LOCAL ORDINANCES.
- 4) THE MONUMENTS ARE OF THE CHARACTER SHOWN AND OCCUPY THE POSITIONS INDICATED.

Lester A. Philippi

LESTER A. PHILIPPI, 0308



ENGINEER'S CERTIFICATE:

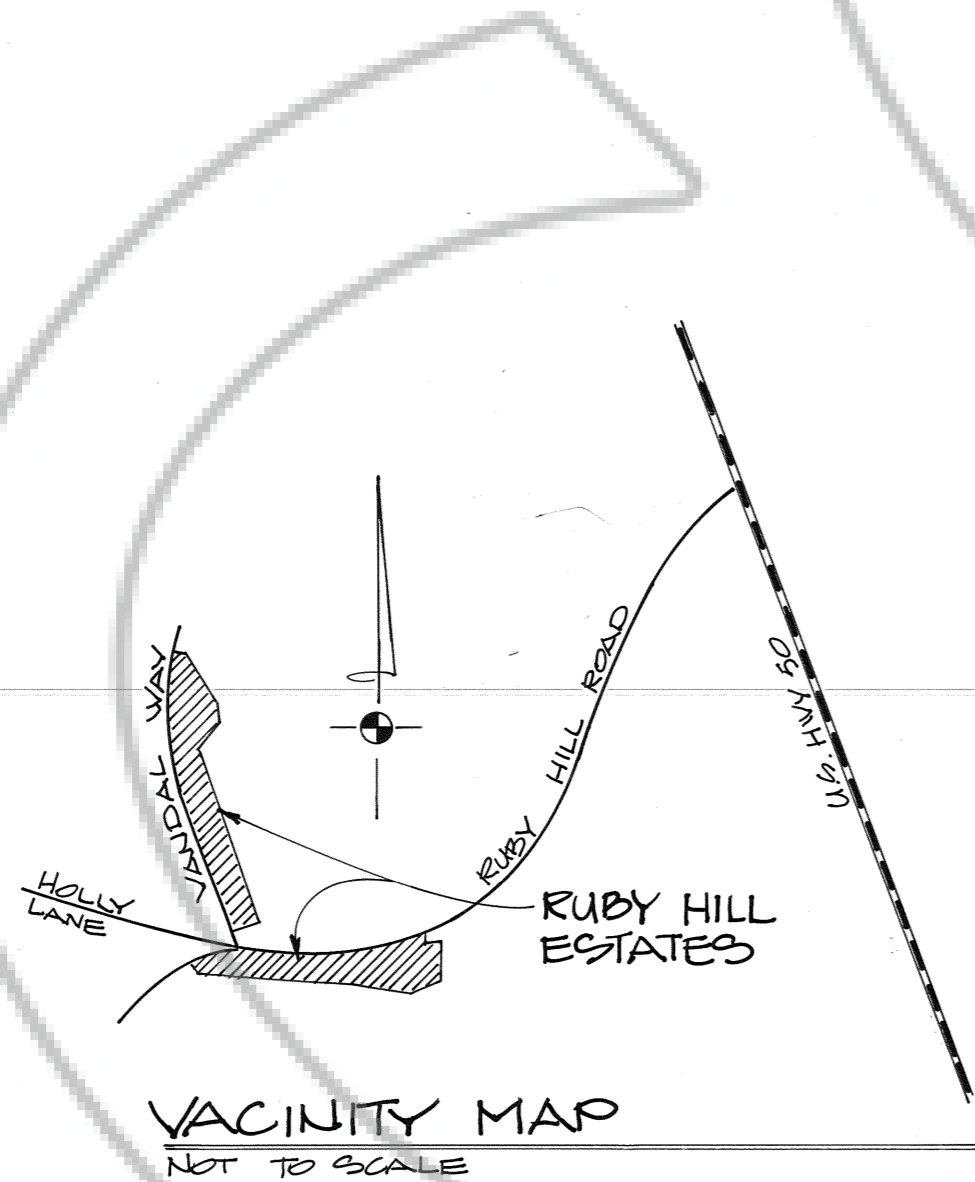
I, PAUL LUMOS, CERTIFY THAT I HAVE EXAMINED THIS MAP CONSISTING OF TWO (2) SHEETS, AND THAT ALL PROVISIONS AND ORDINANCES APPLICABLE HAVE BEEN COMPLIED WITH AND THAT I AM SATISFIED THAT THIS MAP IS TECHNICALLY CORRECT. A PROPER DEPOSIT OR PERFORMANCE BOND HAS BEEN POSTED GUARANTEEING THE SETTING OF THE MONUMENTS SHOWN ON OR BEFORE.

Paul Lumos

COUNTY ENGINEER

FEB 19 / 1985

DATE



**AMENDED PLAT
RUBY HILL ESTATES
SUBDIVISION**

A PORTION OF THE So. 1/2 OF THE S.E. 1/4, SEC. 14 AND THE No. 1/2 OF THE N.E. 1/4, SEC. 23, T. 19 N., R. 53 E., M.D.B. & M. EUREKA TOWNSITE, EUREKA COUNTY, NEVADA.

PREPARED BY:
LUMOS & ASSOCIATES, INC.
625 FAIRVIEW DR. No. 102 CARSON CITY, NEVADA

RECORDER'S CERTIFICATE:

FILED AT THE REQUEST OF James Ithurralde ON THE 15th DAY OF May, 1985, AT 5:5 MIN. P.M. 2 P.M. IN THE OFFICAL RECORDS OF EUREKA COUNTY, NEVADA.

File No. 98941

Jim Bell
EUREKA COUNTY RECORDER