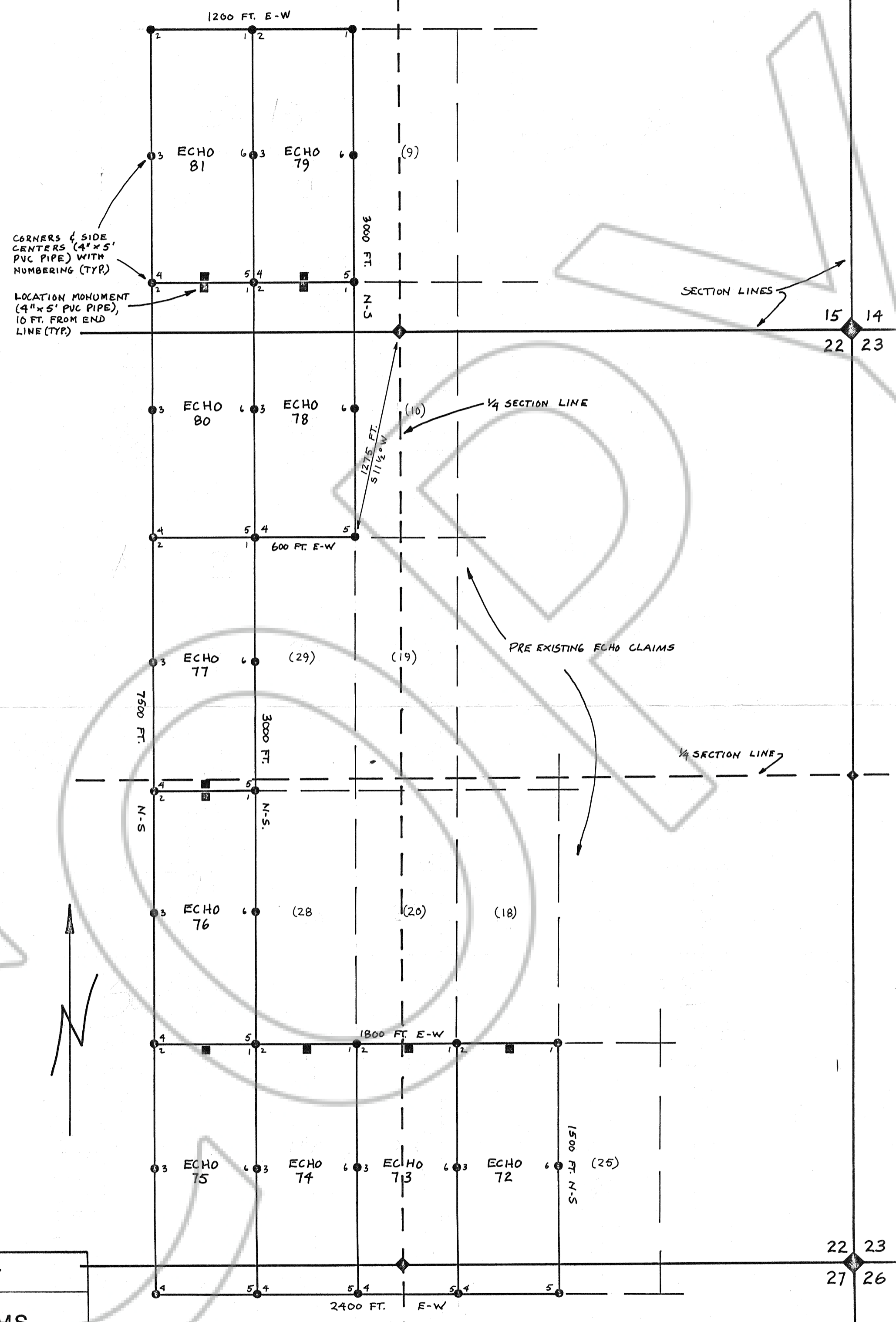


99770



CORNERS & SIDE CENTERS (4" x 5" PVC PIPE) WITH NUMBERING (TYP.)

LOCATION MONUMENT (4" x 5" PVC PIPE), 10 FT. FROM END LINE (TYP.)

SECTION LINES

1/4 SECTION LINE

PRE EXISTING ECHO CLAIMS

1/4 SECTION LINE

CLAIMS LOCATED 26 JUNE 1985
AND OWNED BY:
NEVADA RESOURCES INC.
P.O. Box 7095
RENO, NV 89510

NEVADA RESOURCES INC.
RENO, NEVADA

TITLE
ECHO 72-81 CLAIMS

PROJECT
T 16 N, R 48 E, MDB&M

STATE Nevada COUNTY Eureka

SCALE 1 in - 500 ft DATA BY

DATE 7/03/85 DRAWN BY PHH MAP NO. C750

FILED AT THE REQUEST OF *Nevada Resources Inc*
on *July 11, 1985* at *6* mins past *8 A.* M.

RECORDS OF
EUREKA COUNTY, NEVADA M.N. REBALEATI, Recorder
File No. **99770** Fee \$ *150.00*