

RANGE 49 EAST

Corner No. 1 of Rob # 410 is 8550' North and 100' West of the SE corner of Section 2 T23N, R49E, M.D.M.

NE 1/4 S2
SE 1/4 S2

Rob # 184
Rob # 183

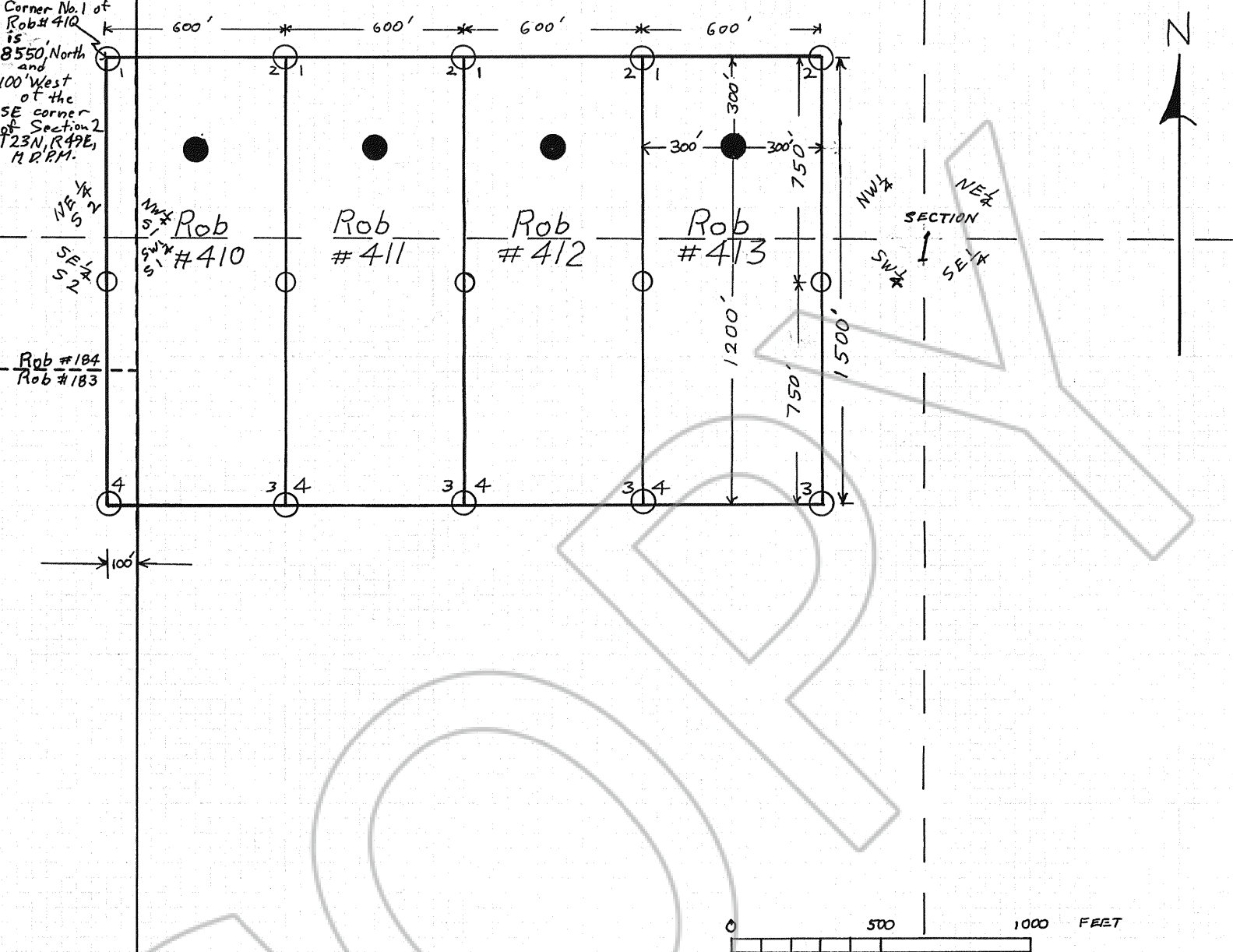
SECTION 2 SECTION 1
TOWNSHIP 23 1/2 NORTH
TOWNSHIP 23 NORTH
SECTION 2 SECTION 1

FILED AT THE REQUEST OF Thomas E. Gesick
on August 15, 1985, at 25 mins. past 3 P. M.
RECORDS OF
EUREKA COUNTY, NEVADA
File No. 100068
M.N. REBALEATI, Recorder
Fee \$ 60.00

5000'

Tie Point for the Rob claims to the Public Land Survey is: The SE corner of Section 2, Township 23 North, Range 49 East of the Mt. Diablo Principal Meridian

100068



Scale: 1 inch = 500 feet

TONKIN SPRINGS GOLD MINING COMPANY

Map showing the location and monuments of lode mining claims Rob # 410, Rob # 411, Rob # 412, Rob # 413 Located and monumented June 20, 1985

- Discovery Monument
 - Claim boundary (Rob 410 - 413)
 - Corner post and Corner number
 - Side Center post
 - Monuments are 4-inch diameter posts
 - Boundary of Rob claims located prior to 6-20-85
 - Section line
 - Quarter section line
- Drawn by T.E. Gesick 8-12-85