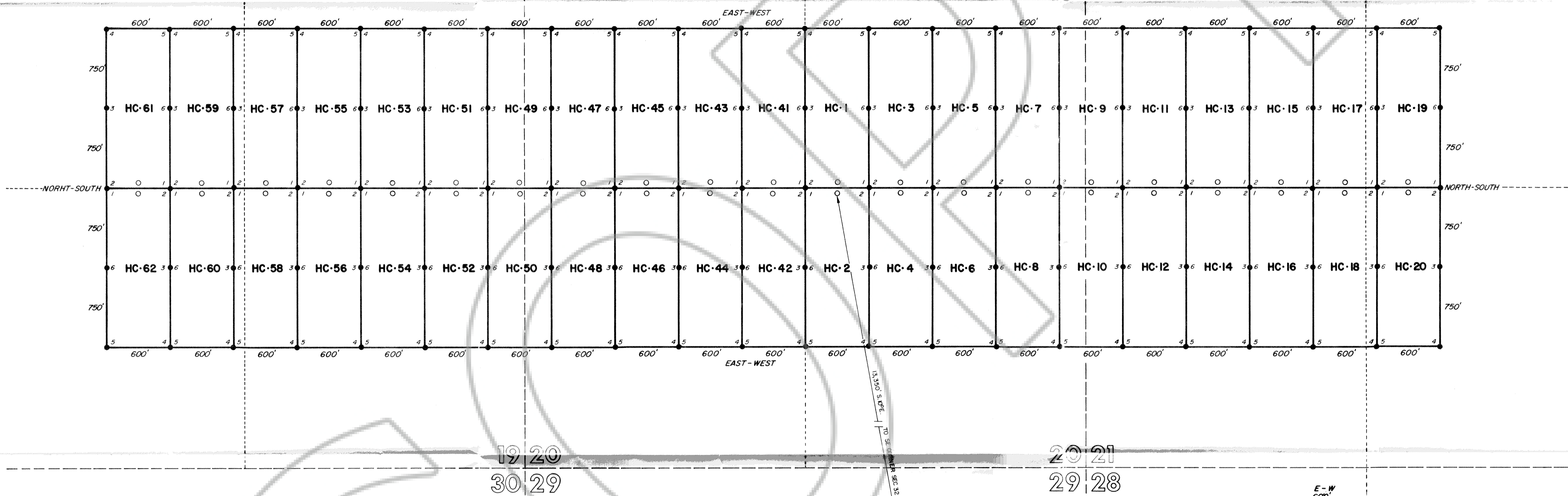


NORTH

0 500' 1000'

18 17
19 20

17 16
20 21

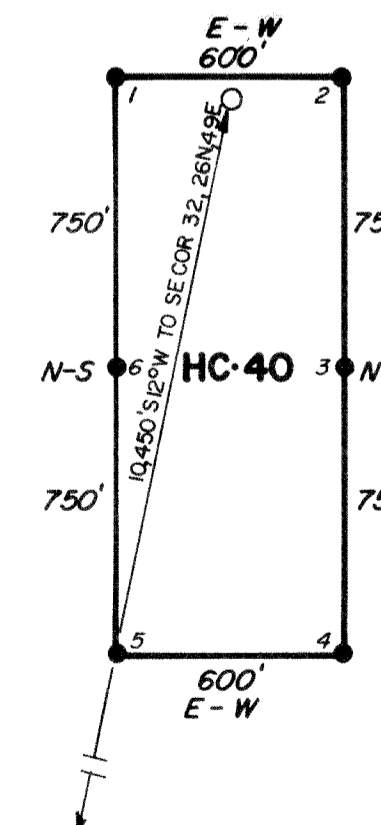


T.26N.,R.49E. MOUNT DIABLO BASE AND MERIDIAN, EUREKA COUNTY, NEVADA

LODE CLAIM	LOCATED	AMENDED	LOCATOR
HC-40-62	6/5/85		ASARCO Incorporated 510 East Plumb Lane Reno, Nevada 89502
HC-1-20	6/10/85		

ALL CLAIMS ARE 600' x 1500' WITH SIDE CENTERS SET 750' FROM THE END LINES. THERE ARE 7 POSTS AT LEAST 4" IN DIAMETER BY 4.5' LONG SET IN THE GROUND, ONE FOR THE DISCOVERY MONUMENT, ONE FOR EACH OF THE 4 CORNERS AND ONE AT THE CENTER OF EACH SIDELINE AS PRESCRIBED BY NSR 517.030.

- LOCATION MONUMENT
- CORNER, SIDE CENTER



FILED AT THE REQUEST OF ASARCO Inc.
 on September 4, 1985 at 51 mine post 1 B
 RECORDS OF
 EUREKA COUNTY, NEVADA M.N. REDELEAT, Recorder
 File No. 100241 Fee \$645.00

ASARCO INCORPORATED
 510 EAST PLUMB LANE
 RENO, NEVADA 89502