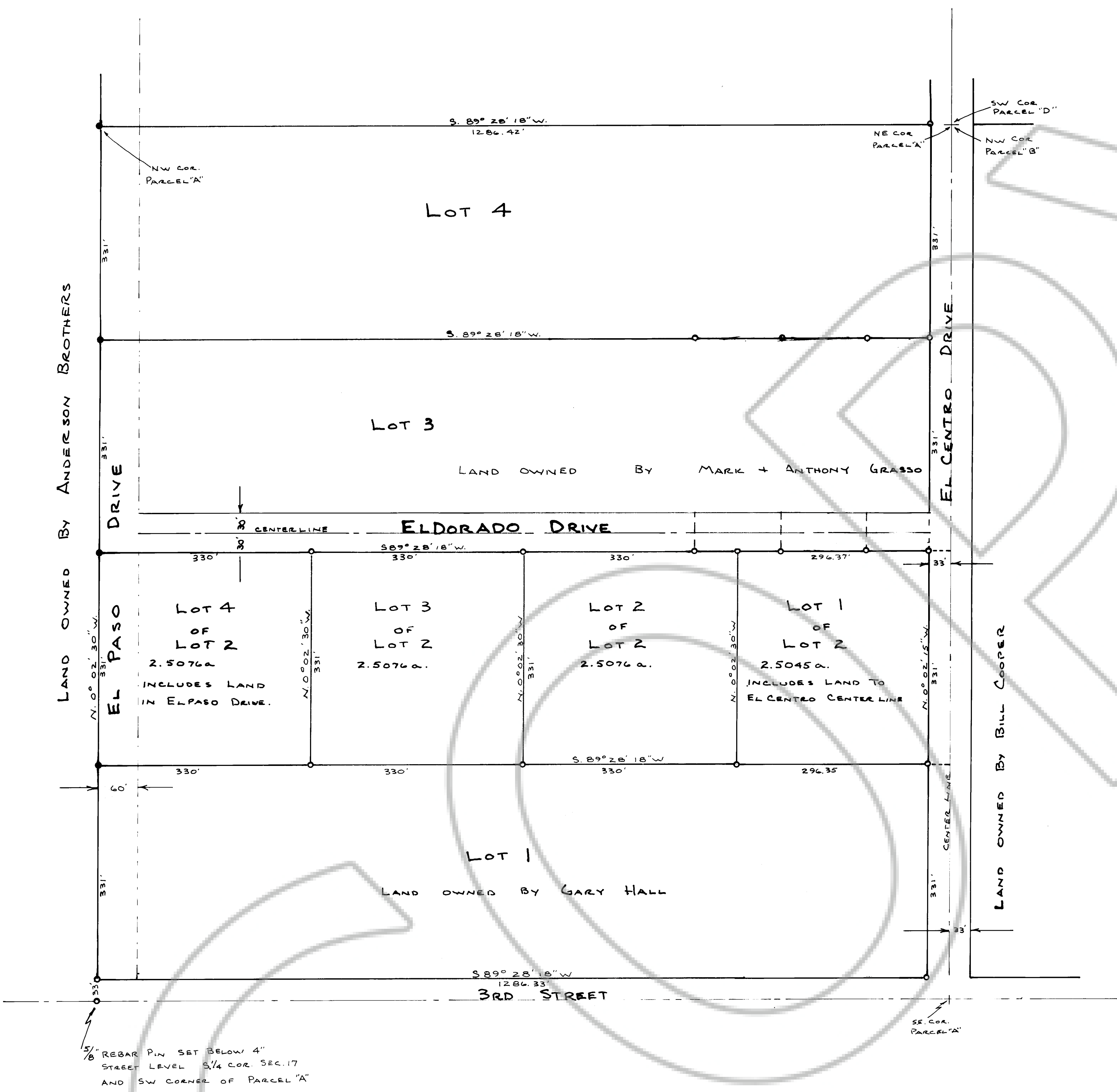


PARCEL "A" OF THE LARGE DIVISION MAP
OF THE E 1/2 SECTION 17, T.20N., R.53E. M.D. MER.

TRUE NORTH



5/8" REBAR PIN SET BELOW 4" STREET LEVEL 3/4 COR. SEC. 17 AND SW CORNER OF PARCEL "A"

CERTIFICATION
I, ARNOLD C. WOOD, CERTIFY THAT THIS PLAT IS A TRUE AND ACCURATE MAP OF A SURVEY MADE BY ME JULY 30, 1985.

Arnold C. Wood
ARNOLD C. WOOD
REGISTERED LAND SURVEYOR - STATE OF NEVADA
No. 3144

OWNERS CERTIFICATION
WE, RONALD W. AND EVELYN NAILLON CERTIFY THAT WE ARE THE OWNERS OF RECORD OF LOT 2 PARCEL "A" OF THE E 1/2 SEC. 17, T.20N., R.53E.; THAT THIS PLAT IS AN ACCURATE REPRESENTATION OF OUR PROPOSED PARCELLING OF SAID LOT 2.

Ronald W. Nailon
RONALD W. NAILLON
Evelyn Nailon
EVELYN NAILLON

APPROVALS
AT A REGULAR MEETING OF THE EUREKA CO. COMMISSIONERS HELD ON 1985, THIS MAP, CONSISTING OF ONE SHEET, WAS PRESENTED AS A PROPOSED PARCEL MAP OF LOT No. 2 PARCEL "A" OF THE E 1/2 SEC. 17, T.20N., R.53E.; LOCATED IN EUREKA CO. NEV. BY RONALD + EVELYN NAILLON.

Dain O'Connell
CHAIRMAN EUREKA CO. COMMISSIONERS
Jan Shangle
CLERK, EUREKA COUNTY

AT A REGULAR MEETING OF THE EUREKA CO. PLANNING COMMISSION HELD ON 1985, THIS MAP WAS APPROVED FOR SUBDIVISION PURPOSES PURSUANT TO N.R.S. 278.461-278.469 INCLUSIVE.

Roberta M. Daniels
CHAIRMAN EUREKA CO. PLANNING COMMISSION
Refer to Planning Commission minutes of 10-17-85 for conditions of this approval.

BASIS FOR BEARINGS: TOWNSHIP PLAT CALL BETWEEN THE N 1/4 COR. + NE COR. SECTION 17 T.20N., R.53E. M.D. WHICH IS N. 89° 50' W.

LEGEND

- 5/8" REBAR PIN WITH YELLOW PLASTIC CAP WITH "R.L.S. 3144" STAMPED ON TOP.
- 3/8" REBAR PIN WITH ALUM TAG WITH "R.L.S. 3144" STAMPED ON IT.

Eureka County Commissioners
October 21, 1985
100554

PARCEL MAP
OF: LOT 2 PARCEL "A" OF THE LARGE DIVISION MAP OF THE E 1/2 SEC. 17 T.20N., R.53E. M.D. MER. LOCATED IN EUREKA CO. NEVADA FOR: RONALD + EVELYN NAILLON SCALE: 1" = 100' SURVEY + MAP BY: A.C. WOOD R.L.S. 3144 JULY 1985

100554

100554