

R. 52 E.

T. 22 N.

SOUTHWEST CORNER,
SECTION 30, T. 23 N., R. 52 E.,
M.D.P.M.

EAST 17,660'

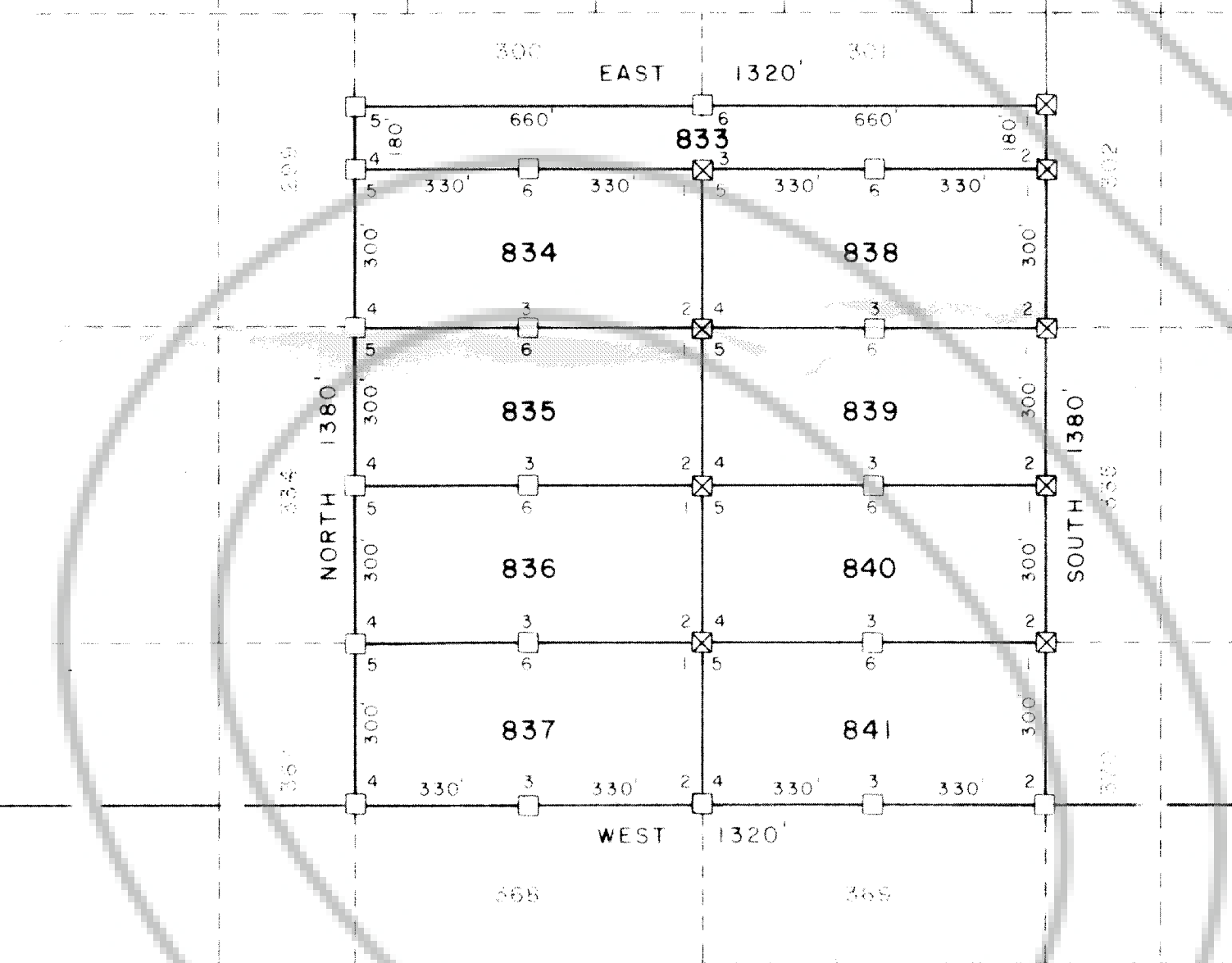
SOUTH 15,380'

TRUE NORTH

SCALE - 1" = 300'

17 16
20 21

16 15
21 22



LEGEND

- ⊗ 4" x 4" x 1/2' WOOD POST LOCATION MONUMENT
- 4" x 4" x 1/2' WOOD POST MONUMENT
- ○ INDICATES SECTION CORNER
- ○ SECTION LINES ARE PROJECTED

LOCATION DATES

JANUARY 6, 1986 - 833 THROUGH 841

FILED AT THE REQUEST OF **APEX SURVEYING**
 on January 13, 1986 at 49 mins past 8 A. M.
 EUREKA COUNTY, NEVADA RECORDS OF
 File No. 101881 M.N. REBALEATI, Recorder
 Fee \$ 135.00

MAP OF THE
MT MILLSITE CLAIMS
 EUREKA COUNTY, NEVADA

LOCATED BY
 EXXON CORPORATION
 C/O EXXON MINERALS COMPANY
 260-B CONEY ISLAND DRIVE
 SPARKS, NEVADA 89431-6314
 JANUARY 6, 1986

APEX SURVEYING INC. RIVERTON, WYOMING 82501