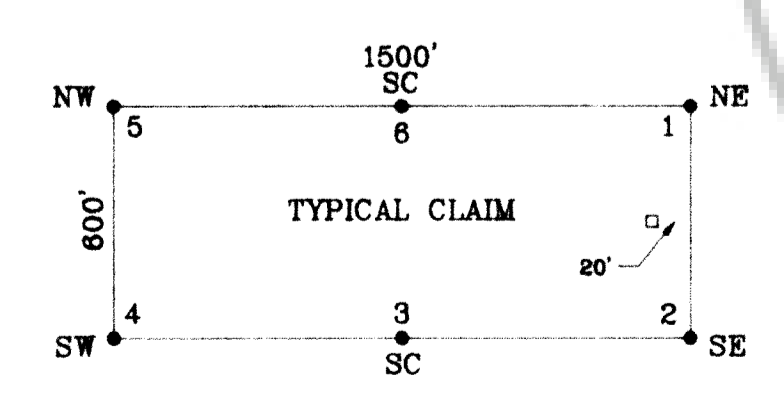
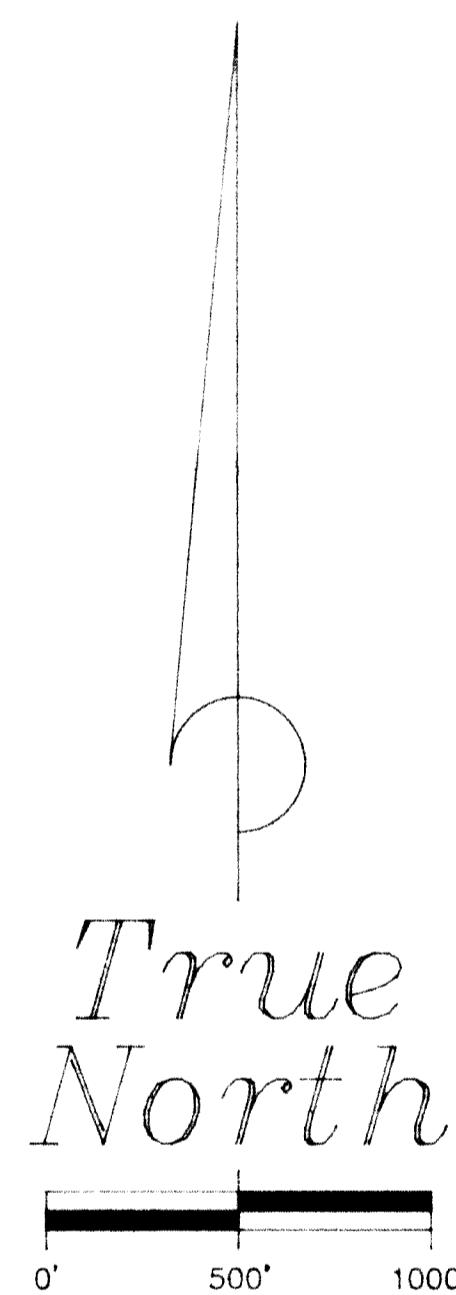
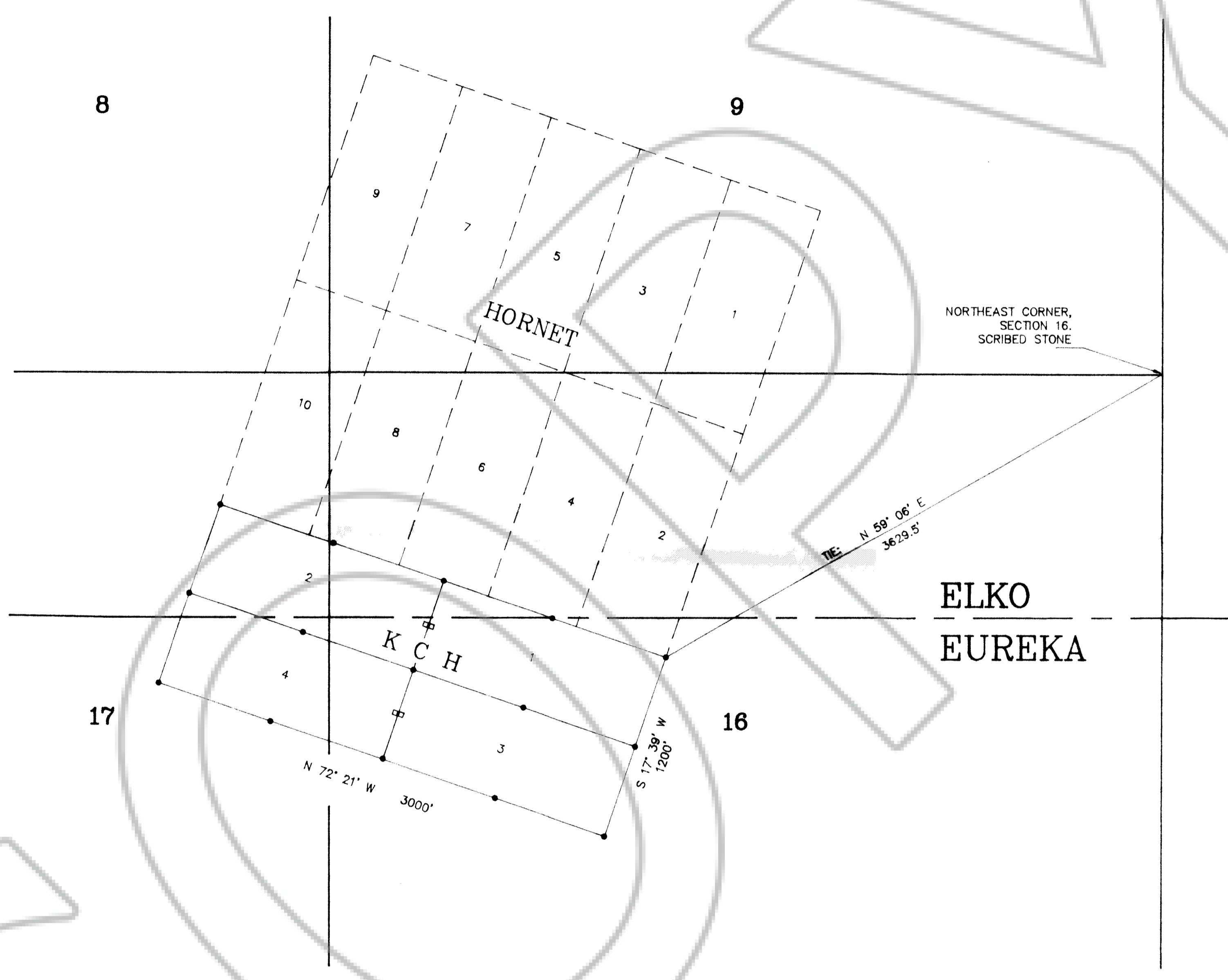


A MAP OF THE
KCH LODE CLAIMS
 T 36 N, R 49 E, M D M
 ELKO & EUREKA COUNTIES, NEVADA



NOTES:
 ALL CORNER AND SIDE CENTER POSTS ARE 4" BY 5" PVC PIPE.
 BEARINGS ARE BASED ON THE ASSUMPTION THAT THE EAST LINE OF THE NE 1/4 OF SECTION 16 BEARS NORTH.
 THE DATE OF DISCOVERY OF THE CLAIM BLOCK IS MARCH 23, 1986.
 ALL DISCOVERY POSTS ARE 20 FT. FROM THE END LINE OF THE CLAIMS.
ALL SECTION LINES ARE PROJECTED.

FILED AT THE REQUEST OF Gold Fields Mining Corp.
 on May 12, 1986 at 17 mins past 9 A. M.
 RECORDS OF
 EUREKA COUNTY, NEVADA
 M.N. REDALEATI, Recorder
 Fee \$60.00
 The No. 102610

		GOLD FIELDS MINING CORP.	
		200 UNION BOULEVARD SUITE 500 LAKEWOOD, CO. 80228	
SURVEYED BY N. E.	DATE	CKD. BY E. SCHAAF & ASSOCIATES	
DRAWN BY J. M.	SCALE 1"=500'	ACCT. NO. J8648D	SHEET 1 OF 1