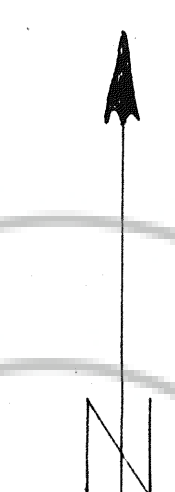


T20N R52E
SECTIONS 15, 22

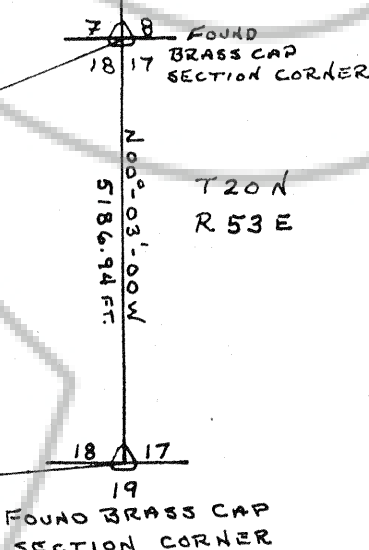


RECORD OF SURVEY
(TRAVERSE)

- T20N (NW COR SEC. 17
R52E) SW COR SEC. 17 - 500°-03'-00" E 5186.74' BRASS CAP
- STA 1 - S 58°-45'-17" W 6706.26' 1" X 2" STAKE
 STA 2 - N 71°-07'-36" W 3853.89' 1/2" REBAR
 R 1 - N 49°-54'-46" W 2891.07' 1/2" REBAR
 SE OJO 1, SW OJO 2 → R 2 - S 80°-39'-06" W 3968.37' 1/2" REBAR
 R 3 - N 79°-08'-51" E 838.73' 1/2" REBAR
- R3 - R2 - S 79°-08'-51" W 838.73' 1/2" REBAR
 R4 - N 12°-37'-12" W 1398.28' 1/2" REBAR
 R5 - N 21°-08'-12" W 1211.18' 1/2" REBAR
 R6 - N 11°-03'-12" W 694.47' 1/2" REBAR



NOT TO SCALE



AMENDED CLAIM MAP
OJO CLAIM GROUP
EUREKA CO. NEV.

SHOWING SURVEY TIE FROM
FOUND SECTION CORNERS.

CLAIM IN
SECTIONS 15 AND 22
T20N R52E

NABOB SILVER-LEAD CO.
LUCKEY THREE MINING CO.
24 AGATE ST.
KELLOGG, IDAHO

SCALE: 1" = 500'
JUNE 3, 1986

FILED AT THE REQUEST OF D.G. Reith
on June 6, 1986 at 15 mins. past 3 P. M.
EUREKA COUNTY, NEVADA RECORDS OF
File No. 102933 M.N. REBALEATI, Recorder Fee \$ 5.00

102933

OJO CLAIMS EUREKA CO., NEV.		
SCALE: 1" = 500'	APPROVED BY:	DRAWN BY
DATE: JUNE 3, 1986	D.G. REITH	REVISED
SURVEY BY: RANGER INC. P.O. BOX 415 EUREKA, NEV.		
		DRAWING NUMBER