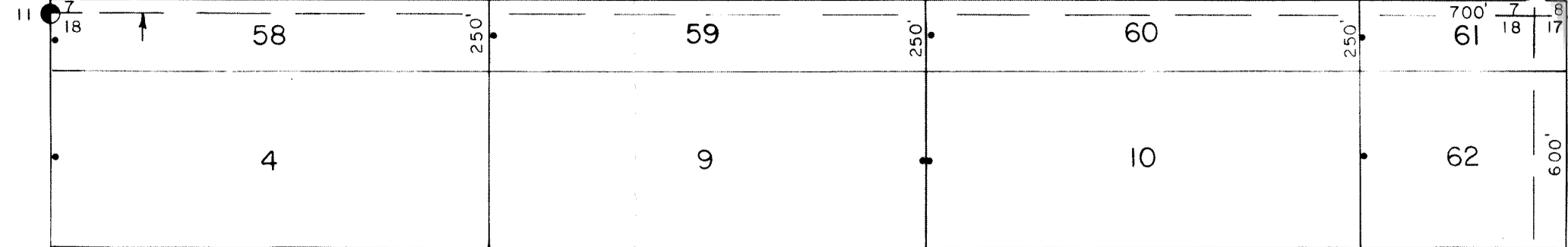


R 50 E R 51 E

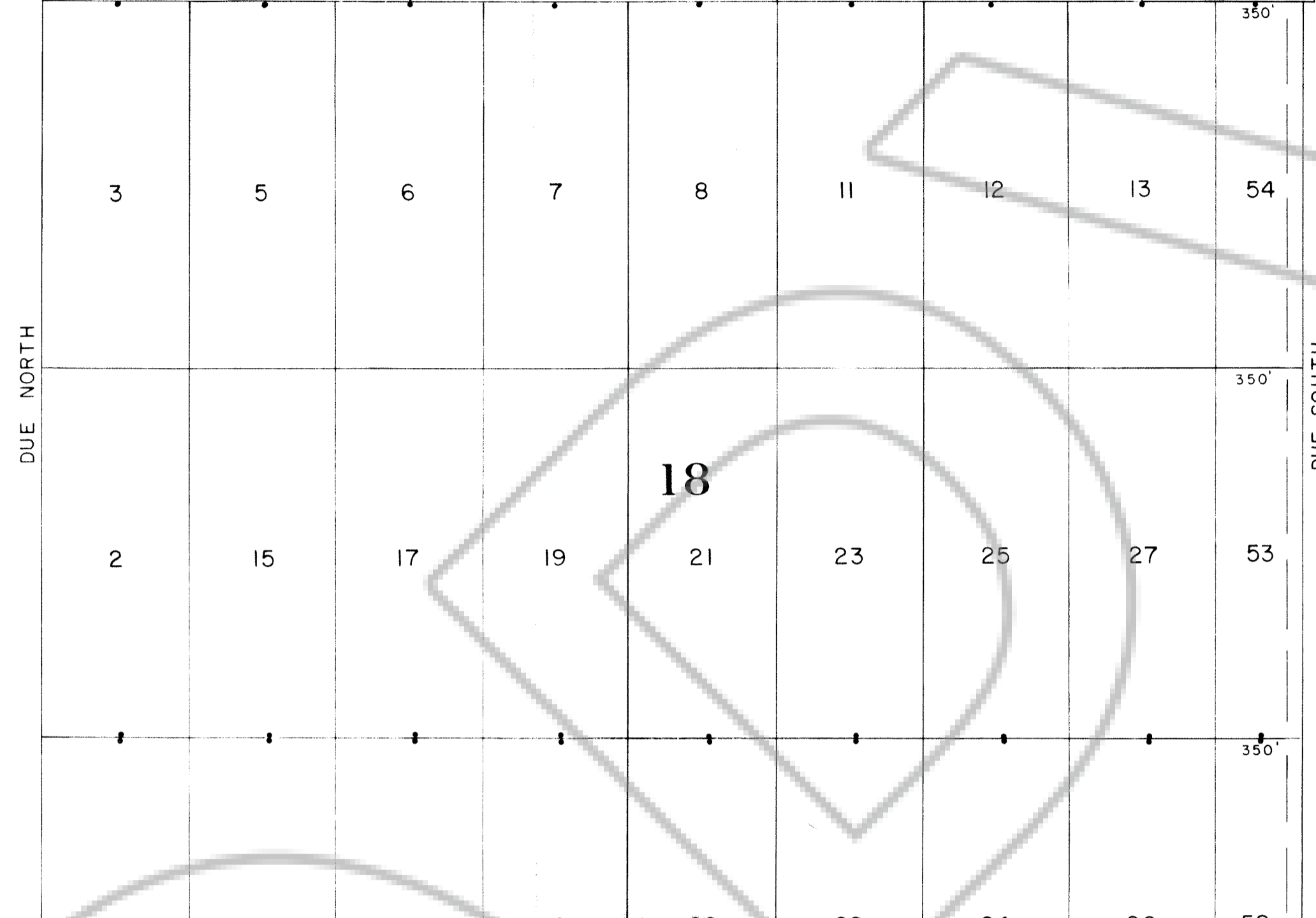
7

DUE EAST



T 34 N

11

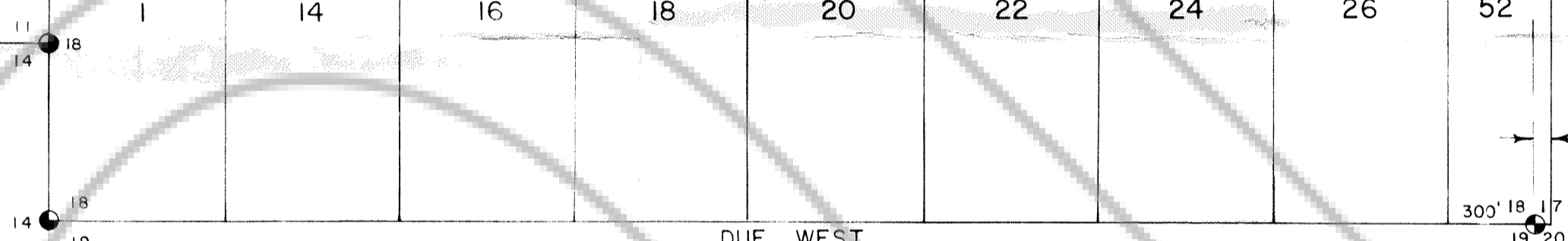


18

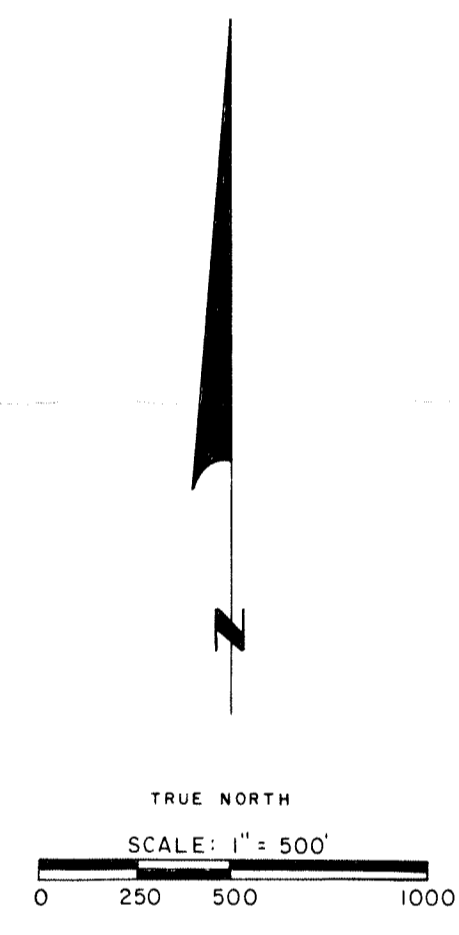
17

DUE NORTH

DUE SOUTH

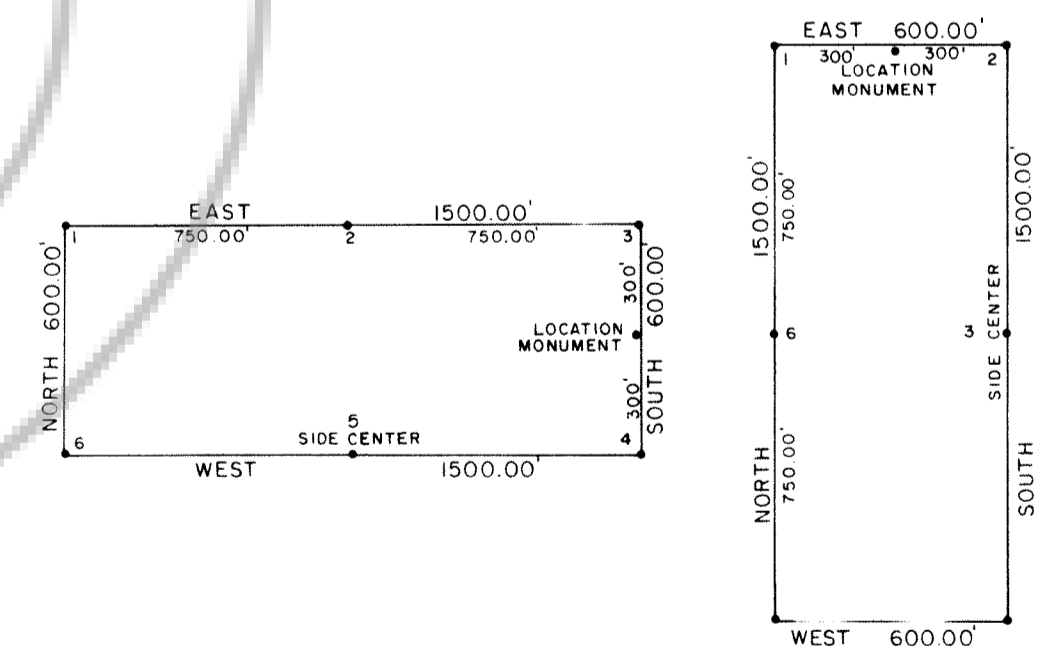


DUE WEST



TYPICAL CLAIMS & CORNER NUMBERS

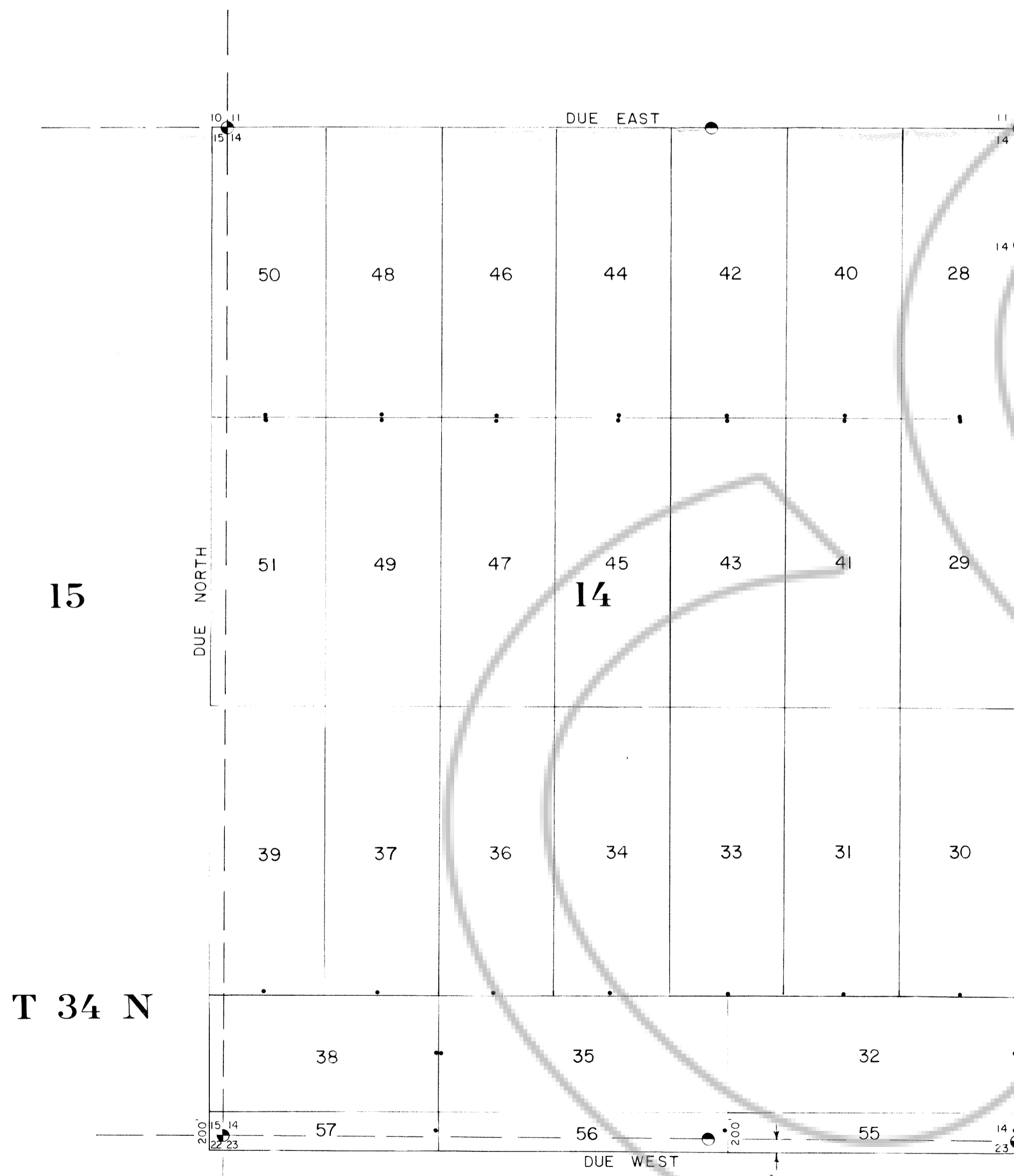
19



LOCATION DATES:

MARCH 18, 1986 ..... 1-27, 58-62  
MARCH 25, 1986 ..... 28-57

- NOTES:
- ALL LODE CLAIMS ARE 600' x 1500' EXCEPT WHERE NOTED.
  - ALL LOCATION MONUMENTS ARE 10' FROM THE END CENTERS
  - ALL CLAIM CORNERS, SIDE CENTERS & LOCATION MONUMENTS ARE 4" x 4" x 4-1/2" WOODEN POSTS OR 5" x 5" PVC PIPE
  - DENOTES FOUND SECTION CORNER OR QUARTER CORNER



15

14

T 34 N

R 50 E R 51 E

103230

FILED AT THE REQUEST OF **INT'L METALS & ENERGY**  
on June 10, 1986 at 35 mins past 4 P. M.  
RECORDS OF  
EUREKA COUNTY, NEVADA  
File No 103230 M.N. REBALEATI, Recorder  
Fee \$ 930.00

**WP LODE MINING CLAIMS  
NO'S 1-62  
EUREKA COUNTY, NEVADA**

**OWNERS:  
INTERNATIONAL METALS & ENERGY  
SUITE 1020, WICHITA TOWERS  
WICHITA FALLS, TEXAS  
76301**

R 51 E

WP LODE  
MINING CLAIMS

29

28

IK LODE  
MINING CLAIMS

33

TYPICAL CLAIMS  
&  
CORNER NUMBERS

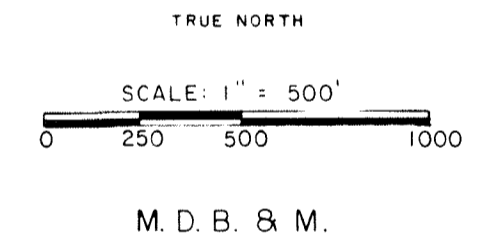
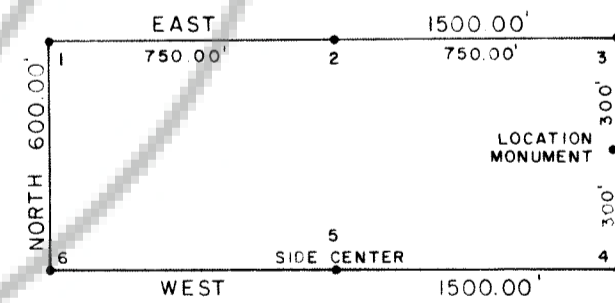
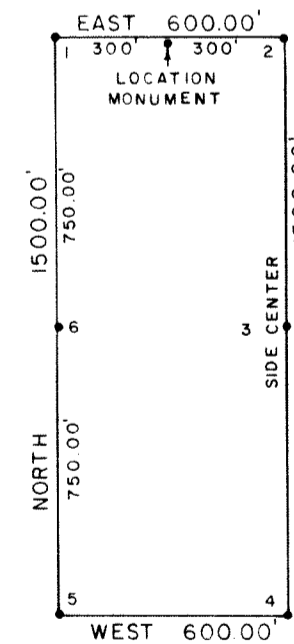
LOCATION DATES:

MARCH 14, 1986 ..... IK 1-35  
MARCH 19, 1986 ..... WP 63-98

NOTES:

- ALL LODE CLAIMS ARE 600' x 1500' EXCEPT WHERE NOTED
- ALL LOCATION MONUMENTS ARE 10' FROM THE END CENTERS
- ALL CLAIM CORNERS, SIDE CENTERS & LOCATION MONUMENTS ARE 4" x 4" x 4-1/2" WOODEN POSTS OR 5" x 5" PVC PIPE
- ⊙ NOTES FOUND SECTION CORNER (BRASS CAPS)

FILED AT THE REQUEST OF **INT'L METALS & ENERGY**  
on June 10, 1986 at 25 mins past 4 P.M.  
EUREKA COUNTY, NEVADA  
File No **103230**



**WP LODE CLAIMS NO'S 63-98  
IK LODE CLAIMS NO'S 1-35  
EUREKA COUNTY, NEVADA**

**OWNERS:  
INTERNATIONAL METALS & ENERGY  
SUITE 1020, WICHITA TOWERS  
WICHITA FALLS, TEXAS  
76301**

103230

T 35 N  
T 34 N

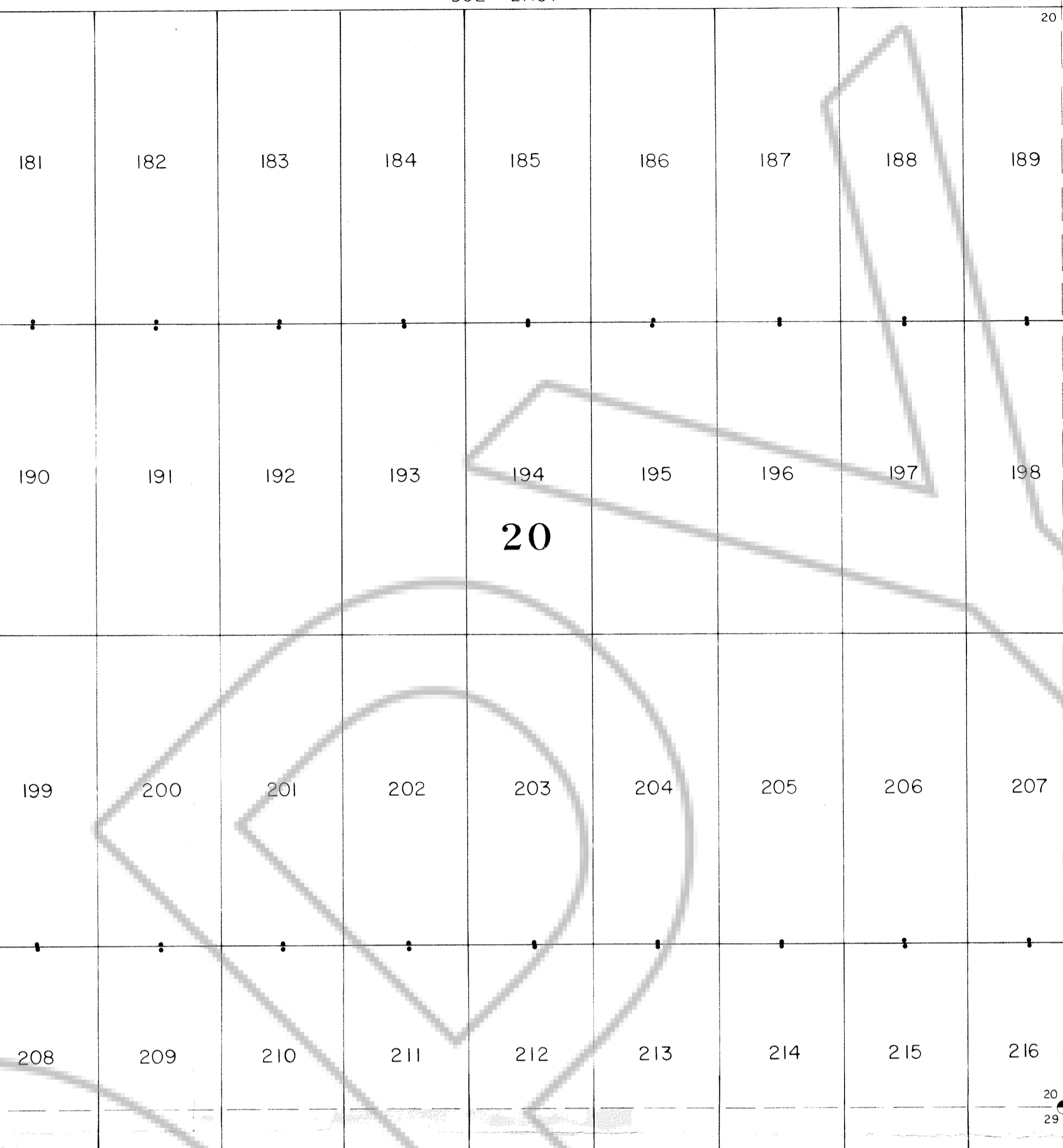
T 34 N

19

DUE EAST

DUE NORTH

DUE SOUTH

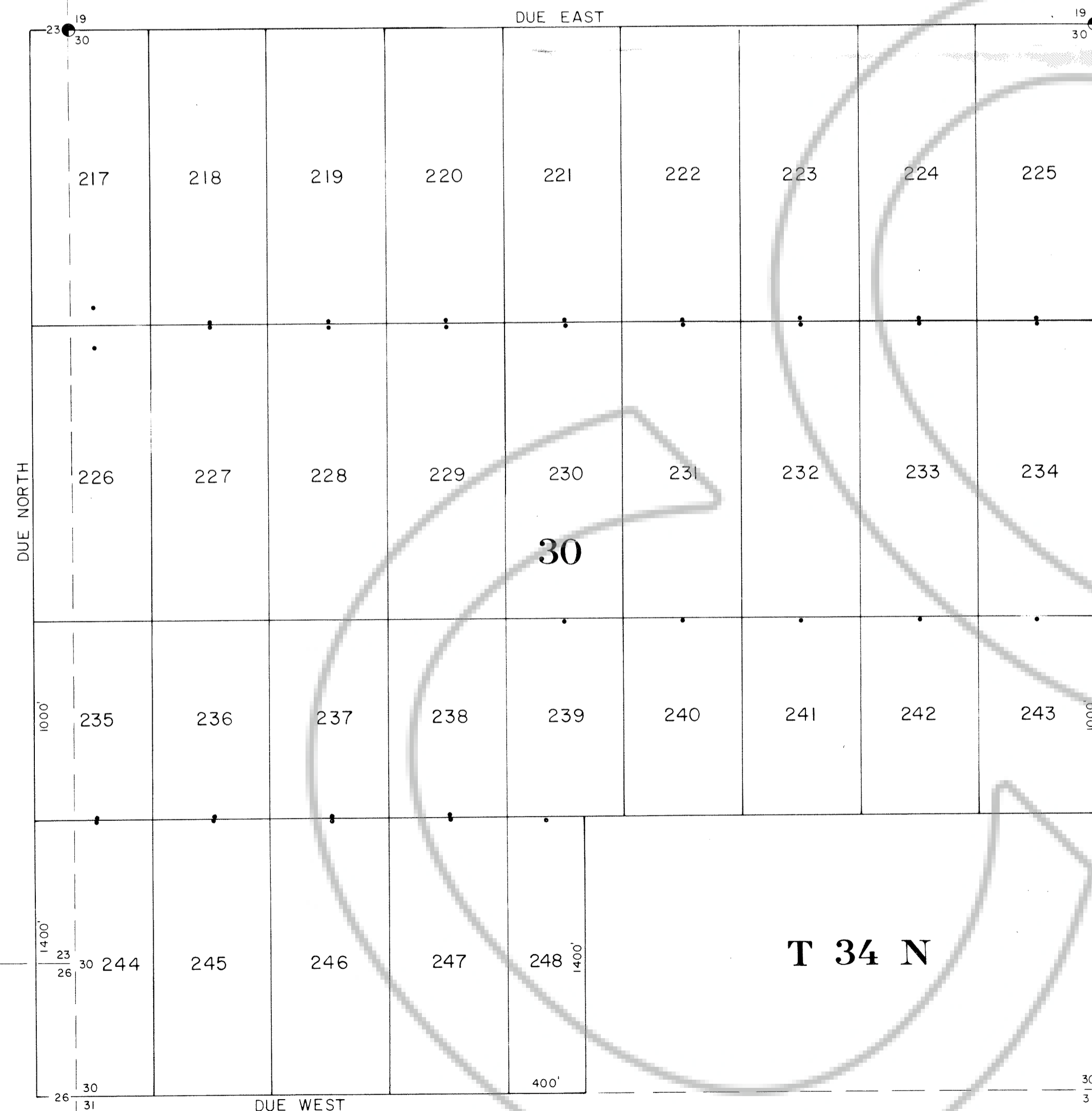


R 50 E R 51 E

23

DUE EAST

DUE WEST



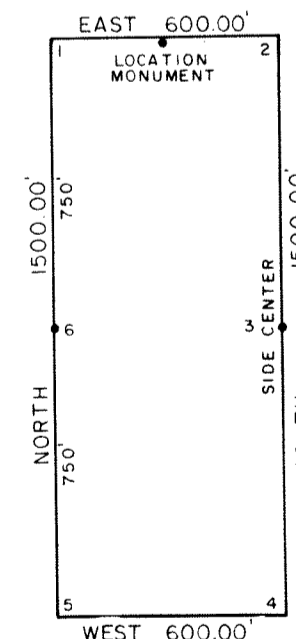
T 34 N

26

DUE WEST

DUE SOUTH

TYPICAL CLAIM & CORNER NUMBERS



NOTES:

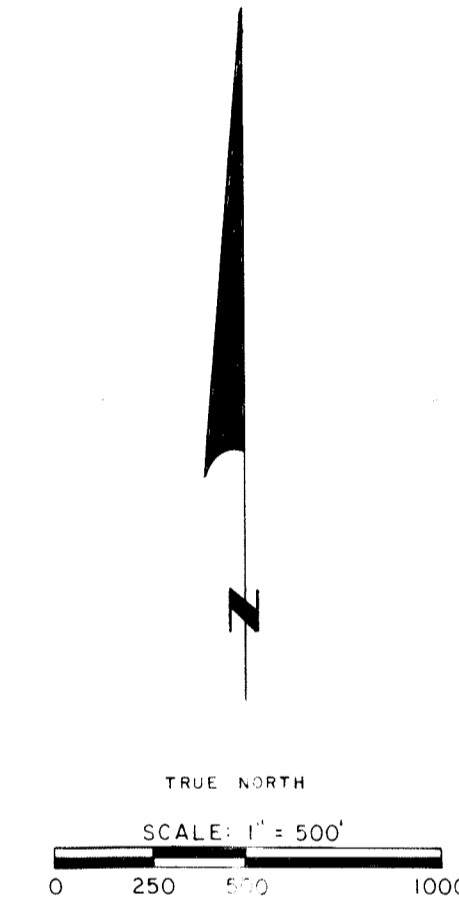
ALL LODE CLAIMS ARE 600' x 1500' EXCEPT WHERE NOTED.

ALL LOCATION MONUMENTS ARE 10' FROM THE END CENTERS EXCEPT NO'S 217 & 226 WHICH ARE 100' FROM THE END CENTERS.

ALL CLAIM CORNERS, SIDE CENTERS & LOCATION MONUMENTS ARE 4" x 4" x 4-1/2" WOODEN POSTS

① DENOTES FOUND SECTION CORNER OR ② QUARTER CORNER (BRASS CAPS)

FILED AT THE REQUEST OF **INT'L METALS & ENERGY**  
 on June 10 1986 at 25 mins past 4 P. M.  
 EUREKA COUNTY, NEVADA REC'D REC'D OF  
 MIN. REGALTY FEE \$1,020.00  
 FILE NO. 103230 FEE \$1,020.00



LOCATION DATES:

MARCH 16, 1986 181-248

**WP LODE MINING CLAIMS  
 NO'S 181 - 248  
 EUREKA COUNTY, NEVADA**

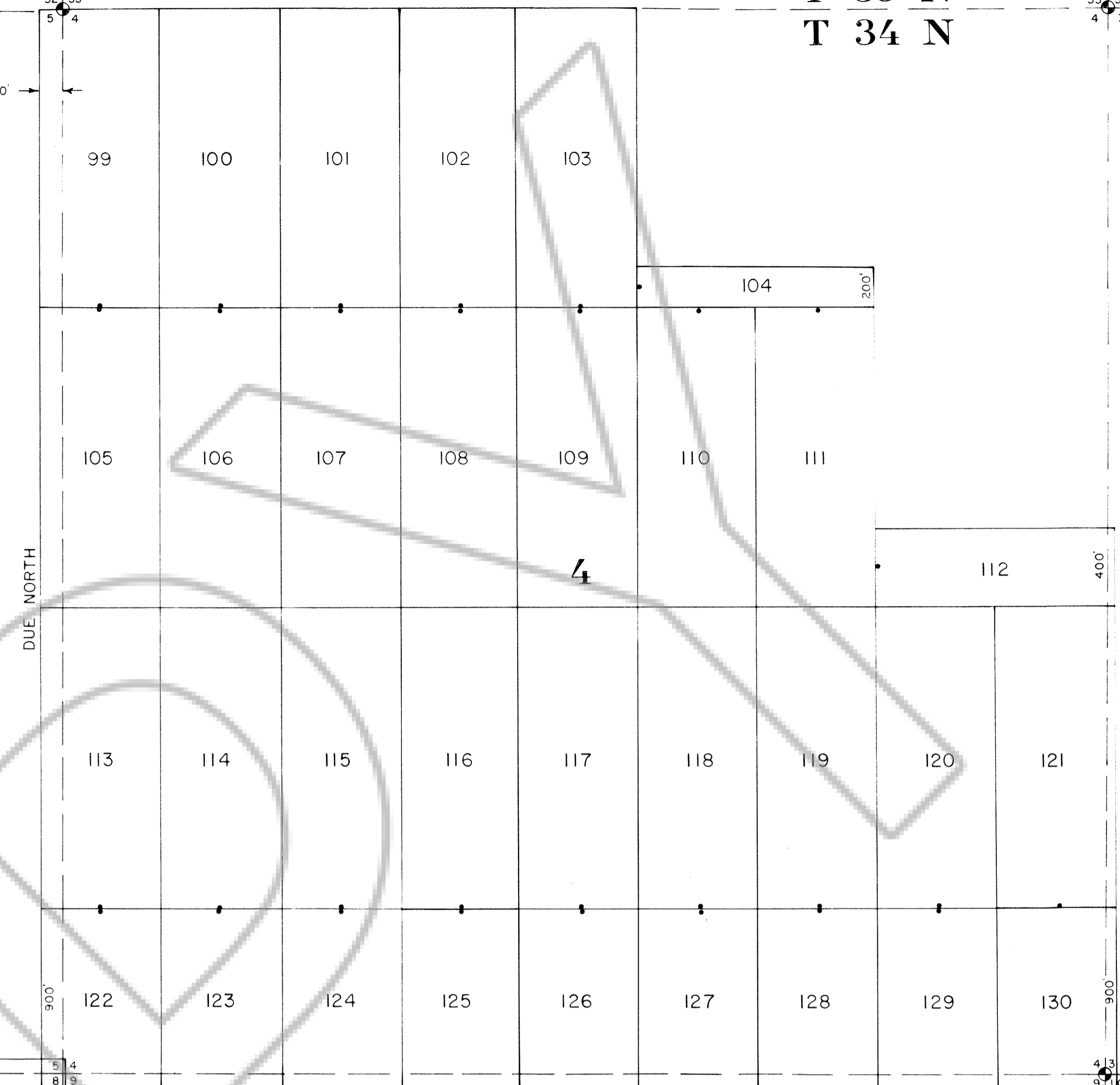
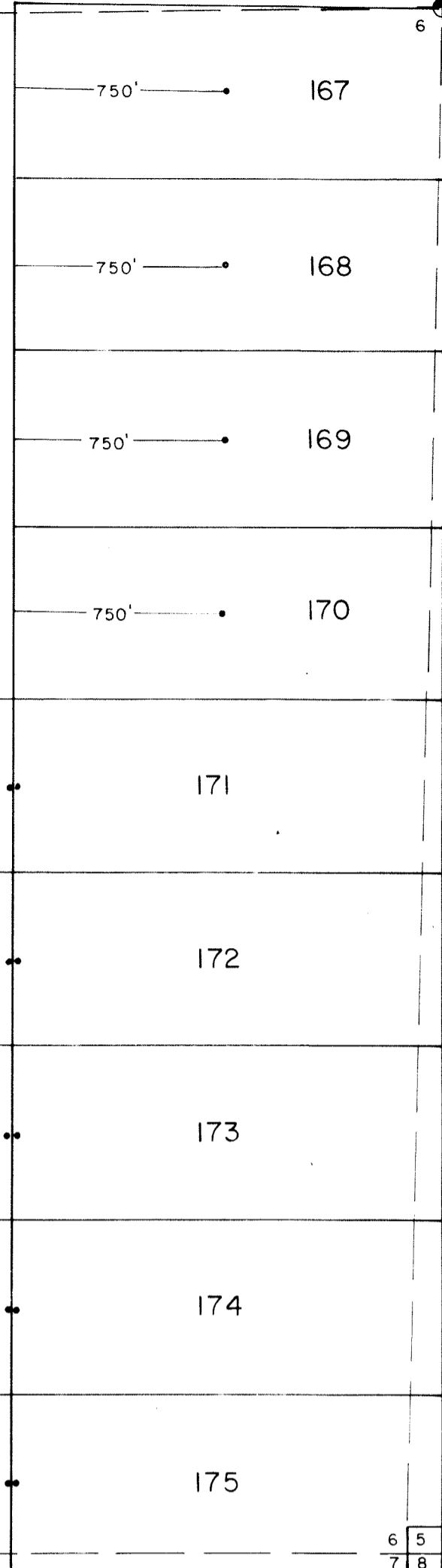
**OWNERS:  
 INTERNATIONAL METALS & ENERGY  
 SUITE 1020, WICHITA TOWERS  
 WICHITA FALLS, TEXAS  
 76301**

T 35 N  
T 34 N

T 35 N  
T 34 N

DUE EAST

DUE EAST



6  
DUE NORTH

DUE SOUTH

DUE NORTH

DUE SOUTH

DUE WEST

DUE WEST

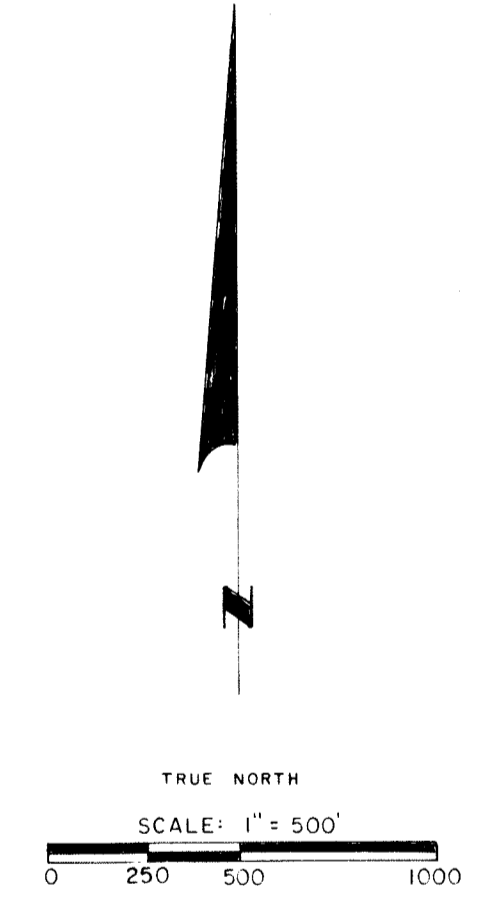
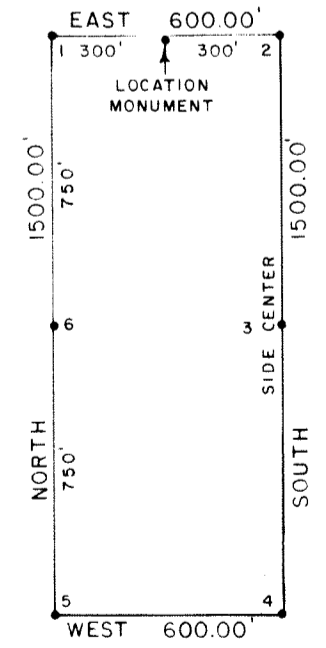
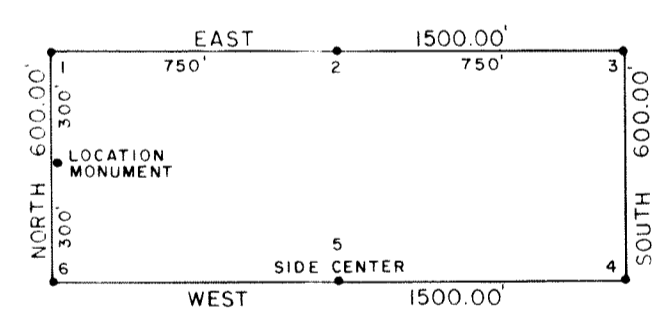
R 51 E

R 51 E

9

10

TYPICAL CLAIMS & CORNER NUMBERS



LOCATION DATES:

MARCH 15, 1986 ..... 167-180  
MARCH 17, 1986 ..... 99-166

NOTES:

ALL LOBE CLAIMS ARE 600' x 1500' EXCEPT WHERE NOTED  
ALL LOCATION MONUMENTS ARE 10' FROM THE END CENTERS  
ALL CLAIM CORNERS, SIDE CENTERS & LOCATION MONUMENTS ARE 4" x 4" x 4-1/2" WOODEN POSTS.  
● DENOTES FOUND SECTION CORNERS (BRASS CAPS).

FILED AT THE REQUEST OF **INT'L METALS & ENERGY**  
on June 10, 1986 at 25 mins past 4 P.M.  
EUREKA COUNTY, NEVADA M.N. REDALEATI, Recorder  
103230 Fee \$ 230.00

**WP LOBE MINING CLAIMS  
NO'S 99 - 180  
EUREKA COUNTY, NEVADA**

**OWNERS:  
INTERNATIONAL METALS & ENERGY  
SUITE 1020 WICHITA TOWERS  
WICHITA FALLS, TEXAS  
76301**