

TYPICAL TS2 CLAIMS
(LOCATION MONUMENT IN CENTER OF CLAIM)

LOCATION DATES

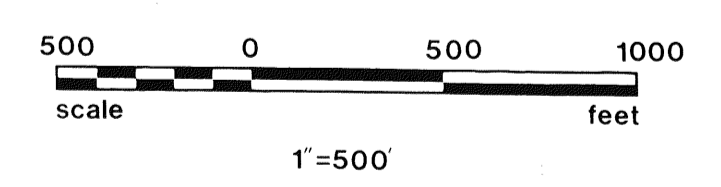
"TS2" CLAIMS NO. 1-5 WERE LOCATED ON THE 29th OF APRIL, 1986.

OWNER AND LOCATOR

NEWMONT EXPLORATION LTD.
P.O. BOX 368
ELKO, NEVADA 89801

LEGEND

- ◊ = FOUND SECTION CORNER
 - = 4" DIA. P.V.C. PIPE CLAIM CORNER
 - = 4" DIA. P.V.C. LOCATION MONUMENT
- BASIS FOR BEARING: G.L.O. PLAT



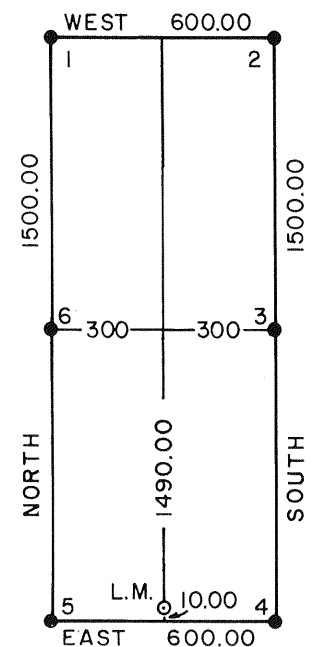
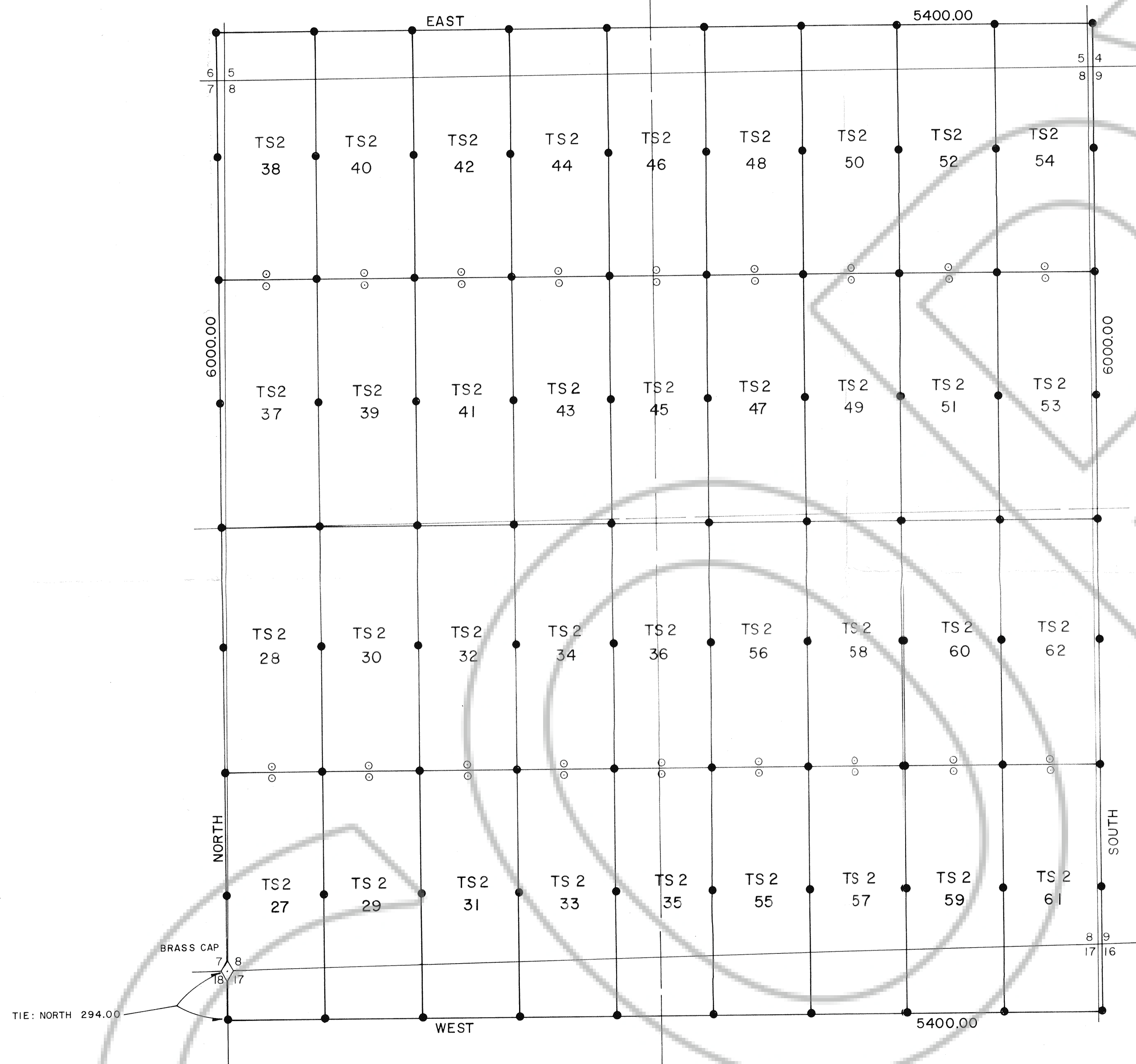
NEWMONT EXPLORATION LIMITED

MAP OF LODE CLAIMS
TS2 No. 1-5

IN
SECTION 18; T. 33N., R. 50E.; M.D.B. & M.
EUREKA COUNTY, NEVADA

GNH/kck JUNE 1986

FILED AT THE REQUEST OF Newmont Exploration Ltd.
on June 26, 1986 at 55 mins. past 10 A.M.
EUREKA COUNTY, NEVADA M.N. REGALEATI, Recorder
File No. 103459 Fee \$ 75.00



TYPICAL TS2 CLAIMS
(LOCATION MONUMENT MAY BE AT EITHER END OF CLAIM)

LOCATION DATES

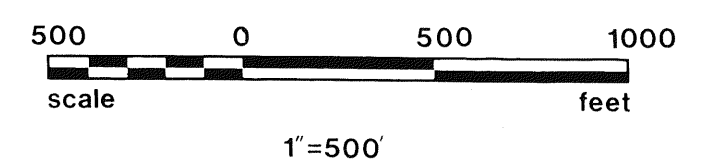
"TS2" CLAIMS NO. 27-62 WERE LOCATED ON THE 29th OF APRIL, 1986.

OWNER AND LOCATOR

NEWMONT EXPLORATION LTD.
P.O. BOX 368
ELKO, NEVADA 89801

LEGEND

- ◊ = FOUND SECTION CORNER
 - = 4" DIA. P.V.C. PIPE CLAIM CORNER
 - = 4" DIA. P.V.C. LOCATION MONUMENT
- BASIS FOR BEARING: G.L.O. PLAT



NEWMONT EXPLORATION LIMITED

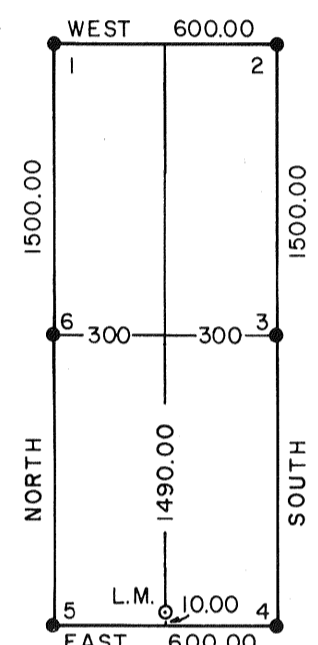
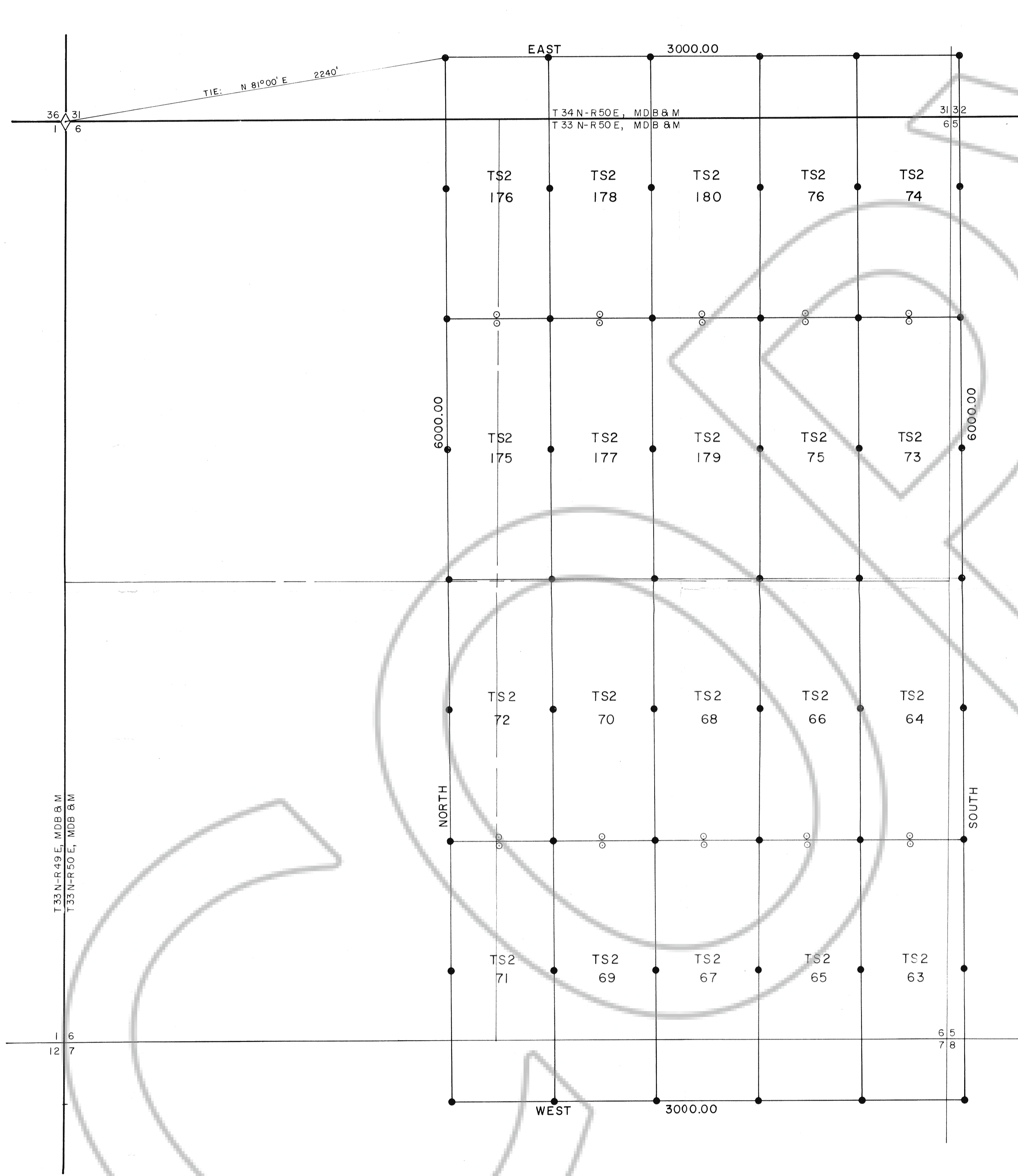
**MAP OF LODE CLAIMS
TS2 No. 27-62**

IN
SECTION 8 ; T. 33N., R. 50E.; MDB. 8 M.
EUREKA COUNTY, NEVADA

FILED AT THE REQUEST OF *Newmont Exploration Ltd.*
on *June 26, 1986* at *55* mins. past *100* M.
RECORDED OF
EUREKA COUNTY, NEVADA M.N. REBALEATI, Recorder:
File No. *103459* Fee \$ *540.00*

GNH/kck

JUNE 1986

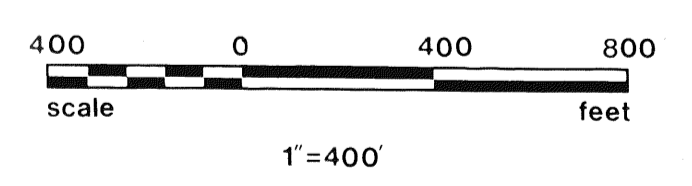


TYPICAL TS2 CLAIMS
(LOCATION MONUMENT MAY BE AT EITHER END OF CLAIM)

LOCATION DATES
 "TS2" CLAIMS NO. 63-76 WERE LOCATED ON THE 29th OF APRIL, 1986.
 "TS2" CLAIMS NO. 175-180 WERE LOCATED ON THE 29th OF APRIL, 1986.

OWNER AND LOCATOR
 NEWMONT EXPLORATION LTD.
 P.O. BOX 368
 ELKO, NEVADA 89801

LEGEND
 ◊ = FOUND SECTION CORNER
 ● = 4" DIA. P.V.C. PIPE CLAIM CORNER
 ○ = 4" DIA. P.V.C. LOCATION MONUMENT
 BASIS FOR BEARING: G.L.O. PLAT

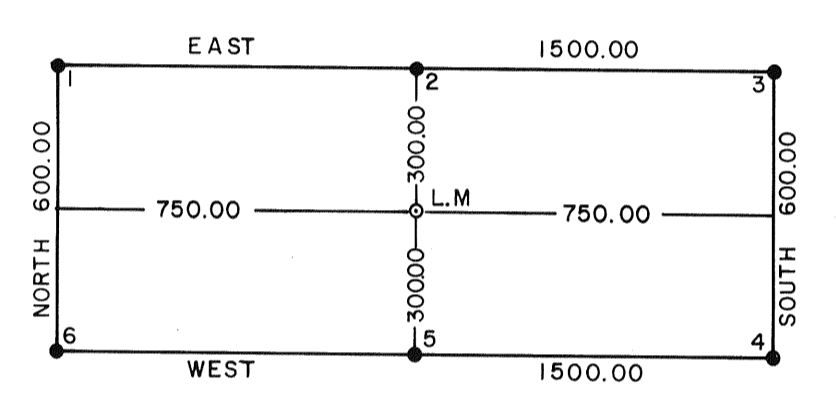
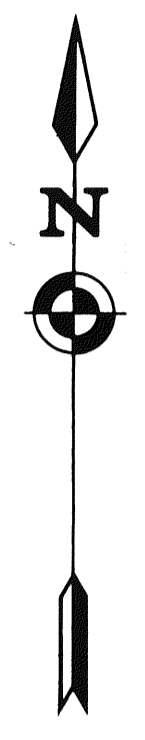
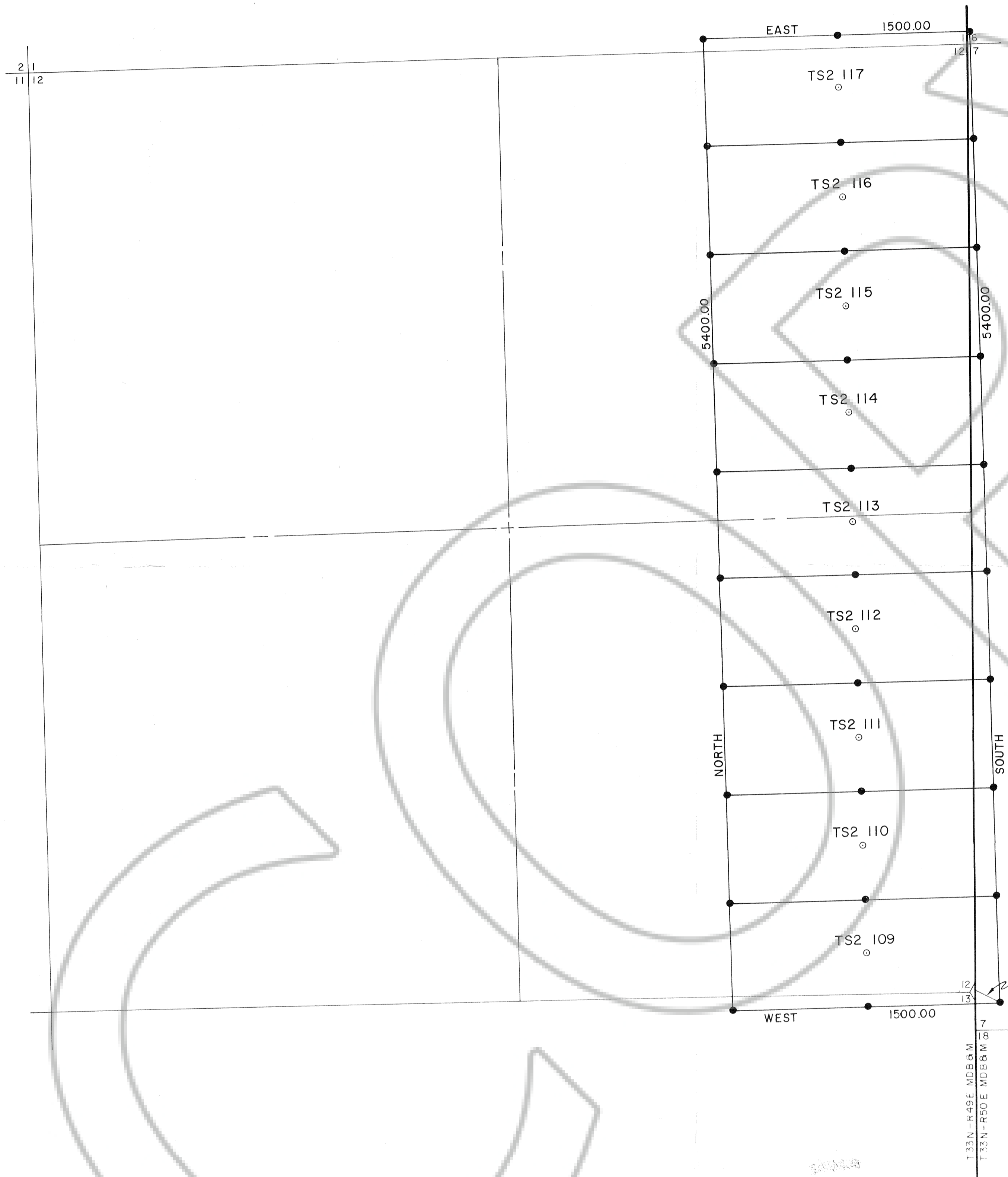


NEWMONT EXPLORATION LIMITED

MAP OF LODE CLAIMS
TS2 No. 63-76, 175-180
 IN
 SECTION 6 ; T. 33N., R. 50E.; M.D.B. & M.
 EUREKA COUNTY, NEVADA

GNH/kck JUNE 1986

FILED AT THE REQUEST OF *Newmont Exploration Ltd.*
 on June 26, 1986, at 55 mins past 10 A.M.
 EUREKA COUNTY, NEVADA RECORDS OF
 File No. 103459 M.N. REBALEATI, Recorder
 Fee \$ 300.00

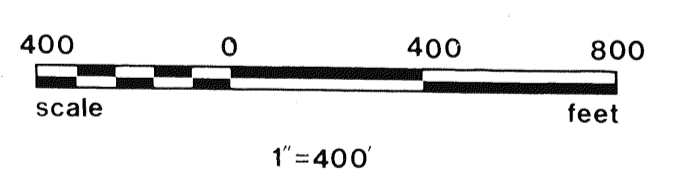


TYPICAL TS2 CLAIMS
(LOCATION MONUMENT IN CENTER OF CLAIM)

LOCATION DATES
"TS2" CLAIMS NO. 109-117 WERE LOCATED ON THE 29th OF APRIL, 1986.

OWNER AND LOCATOR
NEWMONT EXPLORATION LTD.
P.O. BOX 368
ELKO, NEVADA 89801

LEGEND
 ◊ = FOUND SECTION CORNER
 ● = 4" DIA. P.V.C. PIPE CLAIM CORNER
 ○ = 4" DIA. P.V.C. LOCATION MONUMENT
 BASIS FOR BEARING: G.L.O. PLAT



TIE: S 63° 26' 06" E, 145.34'
FOUND BRASS CAP
SE CORNER SECTION 12
T.33N-R.49E, MDB & M

FILED AT THE REQUEST OF Newmont Exploration Ltd.
on June 26, 1986 at 55 mins. past 10A.M.
RECORDS OF
EUREKA COUNTY, NEVADA
File No. 103459
M.N. REBALEATI, Recorder
Fee \$ 135.00

103459

NEWMONT EXPLORATION LIMITED

MAP OF LODE CLAIMS
TS2 No. 109-117
IN
SECTION 12; T. 33N, R. 49E.; M.D.B. & M.
EUREKA COUNTY, NEVADA

GNH/kck JUNE 1986