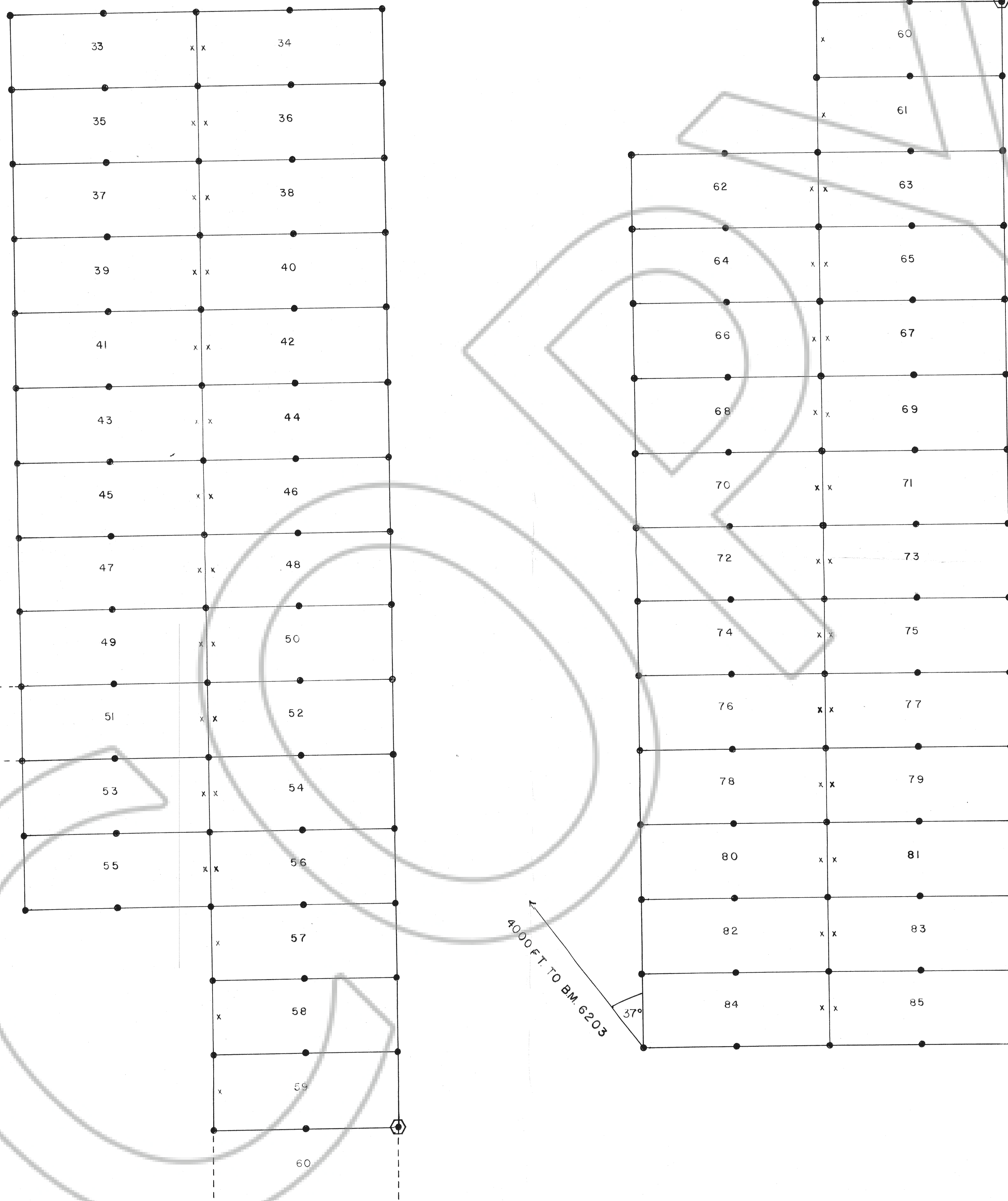


NOTE: WEST BOUNDARY OF BUC GROUP IS STAKED ALONG THE EAST BOUNDARY OF PREEXISTING BUCKAROO GROUP.



**EXPLANATION**  
 ● CLAIM CORNERS  
 x LOCATION MONUMENT  
 ○ COMMON CORNERS

Corners and Monuments marked with 4' by 4" PVC posts

1500'  
600'

**MAP OF BUC 33-85**  
**LOAD CLAIMS**  
 LOCATED IN UNSURVEYED SECTIONS:  
 21, 22, 27, 28, 33, 34, T.27N, R.49E.  
 AND SURVEYED SECTIONS: 3, 4,  
 T.26N, R.49E.

Located May 20 & 21, 1986

Locator: Buckhorn Mines Company  
 875 Cherry Terrace  
 Susanville, CA 96130

FILED AT THE REQUEST OF Cominco American Incorporated  
 on July 20, 1986 at 05 mins. past 11 A.M.  
 RECORDS OF  
 EUREKA COUNTY, NEVADA M.N. REBALEATI, Recorder  
 File No. 104002 Fee 5.00

COMINCO AMERICAN INCORPORATED			
BUCKHORN OPERATION			
COMPILED BY	KLK	DRAFTED BY	KLK
REVISIONS	DATE	REVISIONS	DATE
BUC CLAIM GROUP			
SCALE: 1" = 500 feet		DATE: 7/86	PLATE: