

MAP OF THE JOY 249 thru 276 LODE MINING CLAIMS

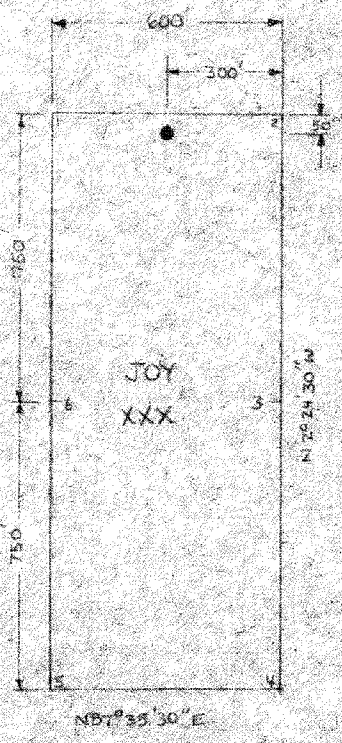
T. 23, 23½, 24 N., R. 50E, M.D.M. 1B
EUREKA COUNTY, NEVADA

All claims are 600' x 1500' (except JOY-257) with side centers set 750' from the end lines. There are 7 posts, at least 4" in diameter by 4.5' long, set 1' in the ground, one for the discovery monument (•), one for each of the 4 corners, and one at the center of each sideline, as prescribed by N.R.S. 517.030.

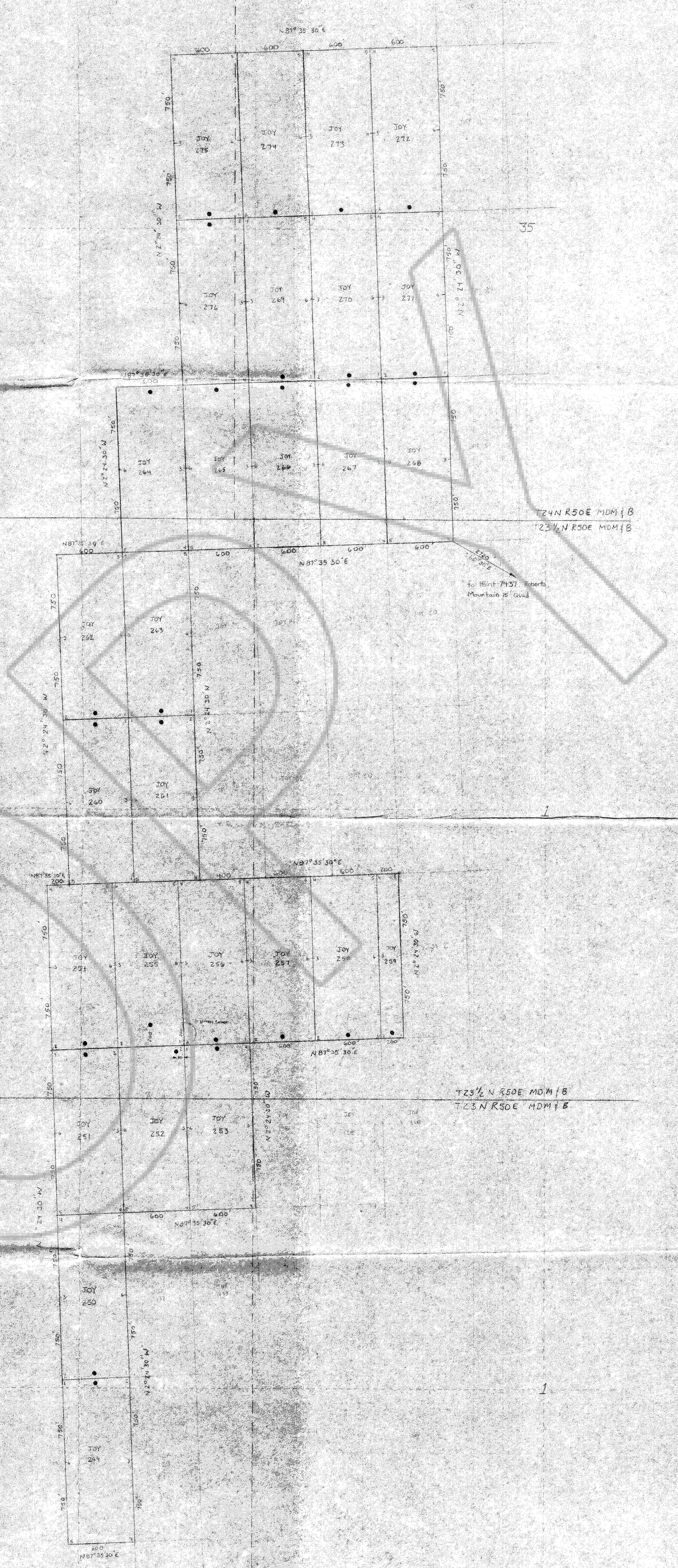
N.R.S. 517.035: When it is practically impossible, on account of bedrock or precipitous ground, to sink the pipes or posts, they may be placed in a mound of earth or stones, or where the proper placing of the monuments is impracticable or dangerous to life or limb, the monument may be placed at the nearest point properly marked to designate its right place.

The location of the section lines and quarter section lines on this map are approximate. They were projected using B.L.M. protraction diagrams and section corners found on the U.S.G.S. Roberts Creek Mountain 15' quadrangle map.

TYPICAL JOY LODE CLAIM



LODE CLAIM	DATE	LOCATOR
JOY- 264 thru 272	5/29/86	ASARCO Incorporated 510 East Plumb Lane Reno, Nevada 89502
JOY- 251 thru 259	5/30/86	
JOY- 260 thru 263	5/31/86	
JOY- 249, 250, 273 thru 276	7/23/86	



FILED AT THE REQUEST OF **ASARCO INC**
on July 30 1986 at 15 mins past 3:00 P.M.
RECORDS OF
EUREKA COUNTY, NEVADA M.N. REDELEATI, Recorder
No. 104031 Fee \$ 442.00

ASARCO INCORPORATED
510 EAST PLUMB LANE
RENO, NEVADA 89502

104031